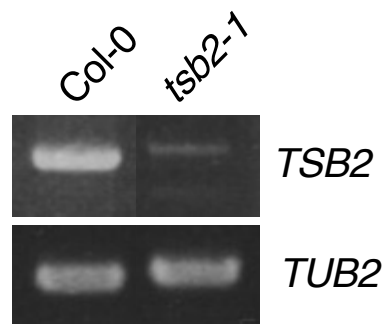


Supplementary Figure 2



SUPPLEMENTARY FIGURE 2 *TSB2* expression analyzed by RT-PCR in Col-0 and *tsb2-1*. Total RNA was extracted from rosette leaves of 5-week-old plants grown on MS plate for 4 weeks and transferred to soil for 1 week. *TUB2* was amplified as a control. PCRs were performed with 30 cycles for *TSB2* and with 25 cycles for *TUB2*, respectively.