

## Appendices

### Appendix 1 Quantitative measurements of journals with built environment and travel behavior research

Source	Number of publications	Total citations	Average citations	Ave.Norm.Citation
Journal of Transport Geography	12	229	19	1.16
Transportation	7	144	21	1.36
Transportation Research Record	6	121	20	0.60
Journal of Rural Studies	4	100	25	1.24
Journal of Transport & Health	4	58	15	1.11
Gender Place and Culture	2	45	22.5	1.96
Journal of Transport and Land Use	4	31	8	0.57
Sustainability	3	8	3	0.44
Research in Transportation Economics	1	16	16	1.10
Geographical Review	1	1	1	0.18
Ageing & Society	1	3	3	0.96
Transportation Research part D-transport and Environment	1	3	4	0.71

## Appendix 2 Summaries of main keywords in travel behavior research

Keywords	Occurrence	Average Year Published	Average Citations	Ave.Norm. Citations
Mobility	20	2017	13.20	0.91
Impacts	18	2018	17.17	1.17
Built environment	16	2016	19.75	1.00
Neighborhood	13	2015	27.00	1.33
Transportation	12	2017	13.58	1.26
Travel	12	2018	11.08	0.90
Accessibility	11	2016	22.27	1.15
Travel behavior	11	2014	35.82	1.43
Walking	10	2018	12.00	1.22
Behavior	9	2016	11.44	0.95
Transport	9	2016	19.67	1.06
Urban form	9	2017	9.11	0.73
Rural	8	2014	23.25	0.84
Urban	8	2017	19.75	1.13
China	7	2018	7.00	1.32
Physical-active	7	2016	11.43	0.83
Car ownership	6	2019	5.83	1.08
Health	6	2016	10.50	0.63
Land-use	6	2017	12.33	0.88
Mode choice	6	2016	20.00	1.25
Demand	5	2016	12.20	0.92
Gender	5	2018	15.80	1.65
Rural built environment	5	2019	5.20	0.99
Social exclusion	5	2014	27.60	0.96
Access	4	2018	5.00	0.90
Car	4	2014	31.25	1.13
Migration	4	2018	6.00	1.50
Poverty	4	2021	1.00	0.74
Travel mode choice	4	2017	35.75	1.63
Trends	4	2018	8.50	1.33
Children	3	2016	23.00	2.21
Choice	3	2014	10.67	0.72
Infrastructure	3	2020	0.67	0.73
Life	3	2017	5.33	0.46
Ownership	3	2020	2.33	0.43
Policy	3	2014	28.67	1.37
Public-health	3	2015	13.67	0.84
Self-selection	3	2015	49.67	1.60
Time	3	2016	10.33	0.99
Vehicle ownership	3	2019	9.33	1.63



### Appendix 3 Quantitative measurements of scholars in travel behavior research

Scholar	Documents	Citations	Norm. citations	Avg. pub. year	Avg. citations	Avg. norm. citations
Ao, Yibin	5	26	4.96	2019	5.20	0.99
Chen, Chuan	3	22	3.82	2018	7.33	1.27
Chen, Yunfeng	2	4	1.14	2019	2.00	0.57
Derudder, Ben	2	147	3.72	2012	73.50	1.86
Hine, Julian	2	32	1.08	2012	16.00	0.54
Van Acker, Veronique	2	147	3.72	2012	73.50	1.86
Wang, Yan	5	26	4.96	2019	5.20	0.99
Witlox, Frank	2	147	3.72	2012	73.50	1.86
Yang, Dujuan	3	22	3.82	2018	7.33	1.27
Zhang, Yuting	2	4	1.14	2019	2.00	0.57
Zhao, Pengjun	2	11	3.77	2020	5.50	1.89

Appendix 4. Table of countries actively engaged in travel behavior

Country	Number of publications	Total link strength	Average publication year	Number of citations	Average citation	Ave.Norm.Citation
USA	20	6	2015	325	16	0.83
China	10	7	2019	64	6	1.34
Netherlands	8	6	2018	33	4	0.72
England	6	3	2015	207	35	1.38
Canada	5	1	2015	67	13	1.01
Australia	3	3	2013	81	27	1.38
India	2	1	2012	26	13	0.61
North Ireland	2	2	2013	32	16	0.54
Singapore	2	1	2016	17	9	0.48
Scotland	2	3	2019	1	1	0.09
Ecuador	1	1	2018	6	6	0.98
Ethiopia	1	1	2020	1	1	0.32
Iran	1	1	2014	2	2	0.13
Kenya	1	2	2020	0	0	0.00

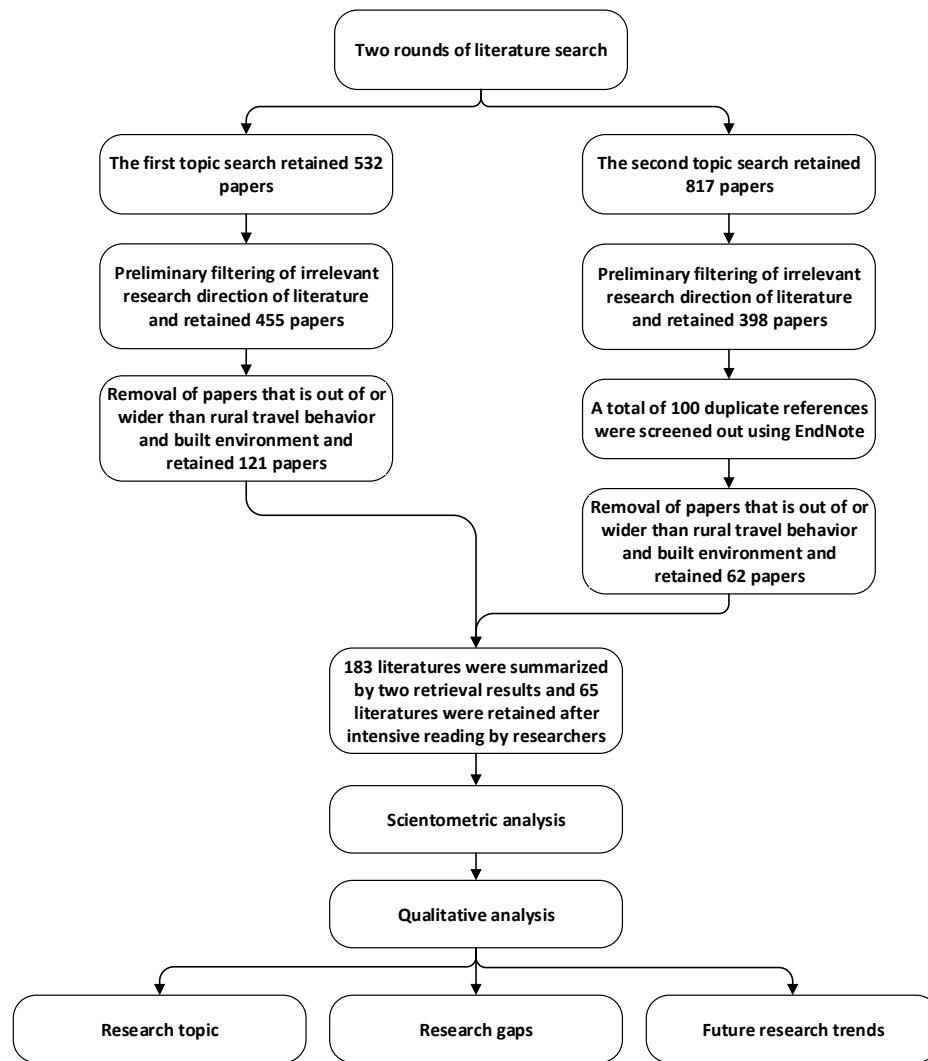


Fig. 1. Flow chart of scientific analysis of literature on this research topic

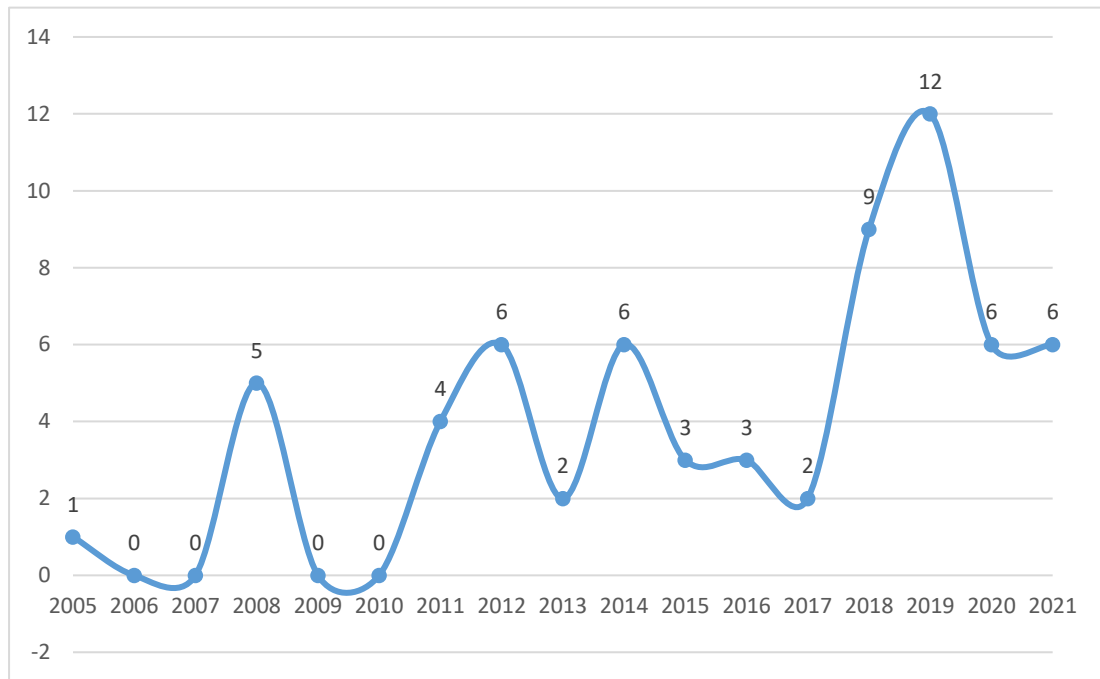


Fig. 2. Annual publications from 2005 to 2021 in the research field

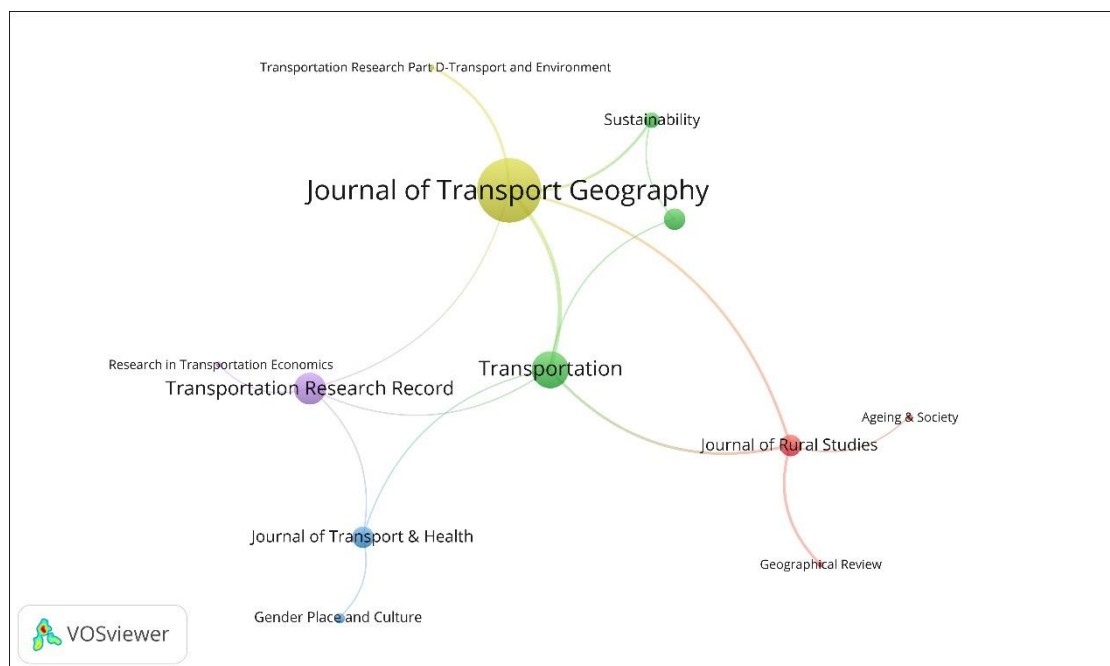


Fig. 3. Map of mainstream journals in the field of rural travel behavior

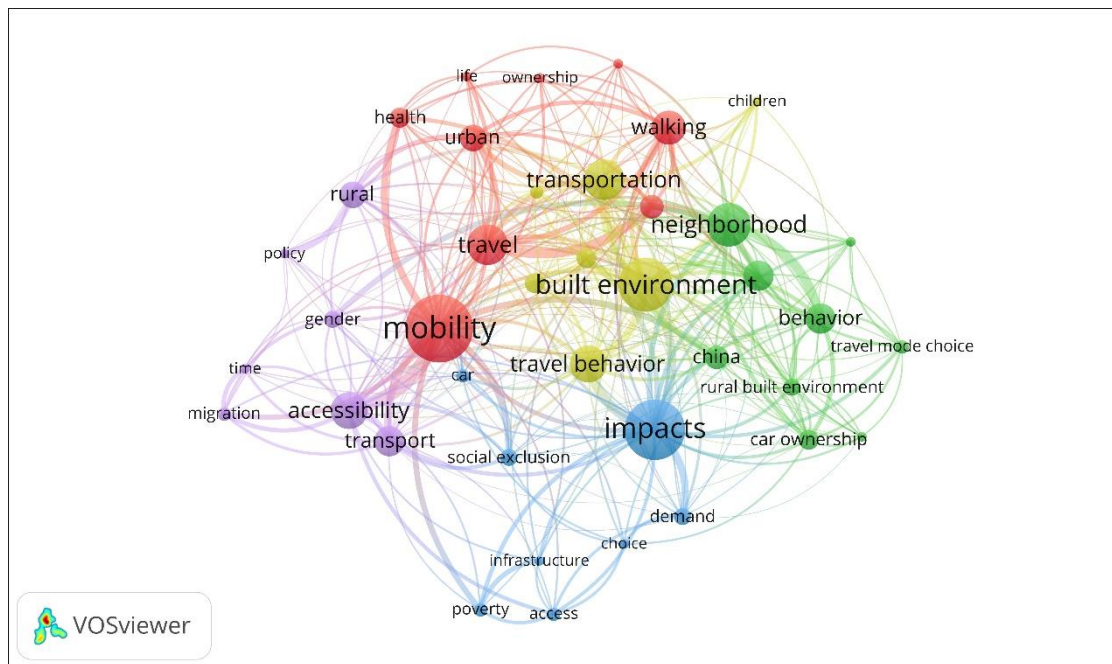


Fig. 4. Map of co-occurrence of keywords

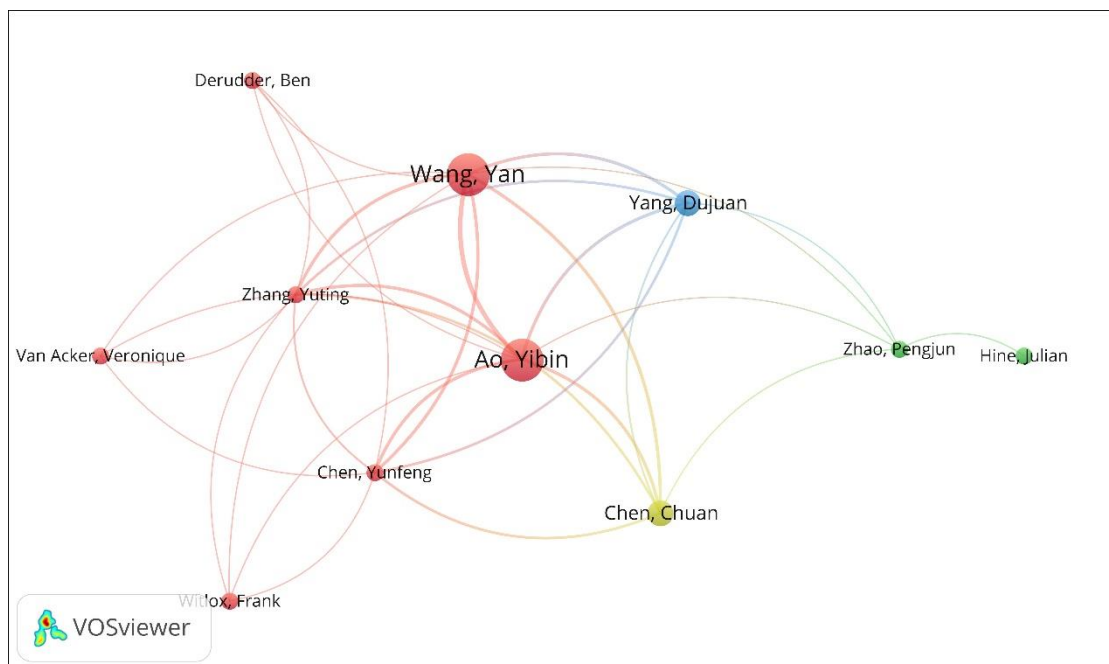


Fig. 5. Map of co-authorship in the field of rural travel behavior



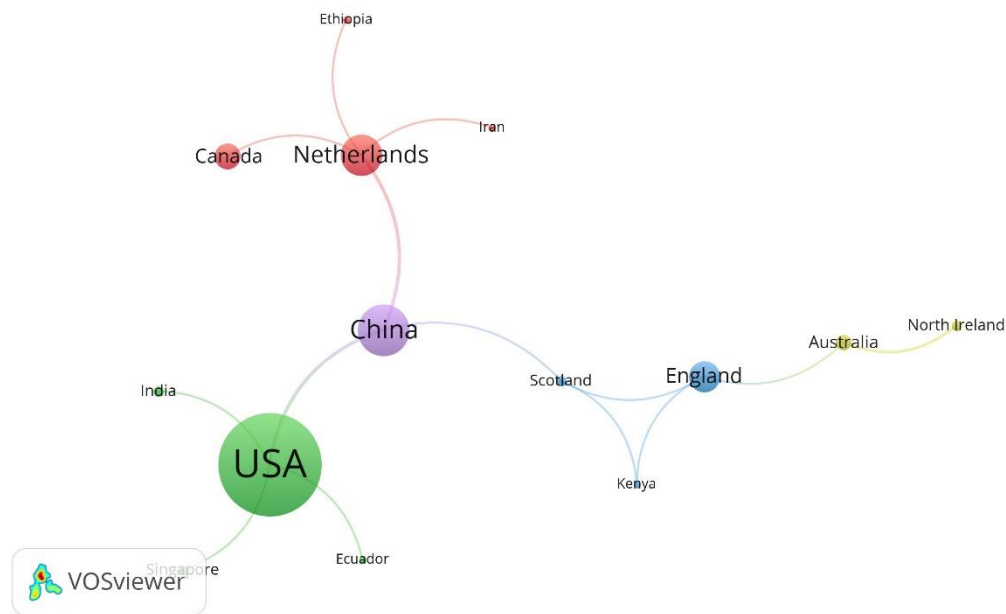


Fig. 6. Map of countries actively engaged in this research topic

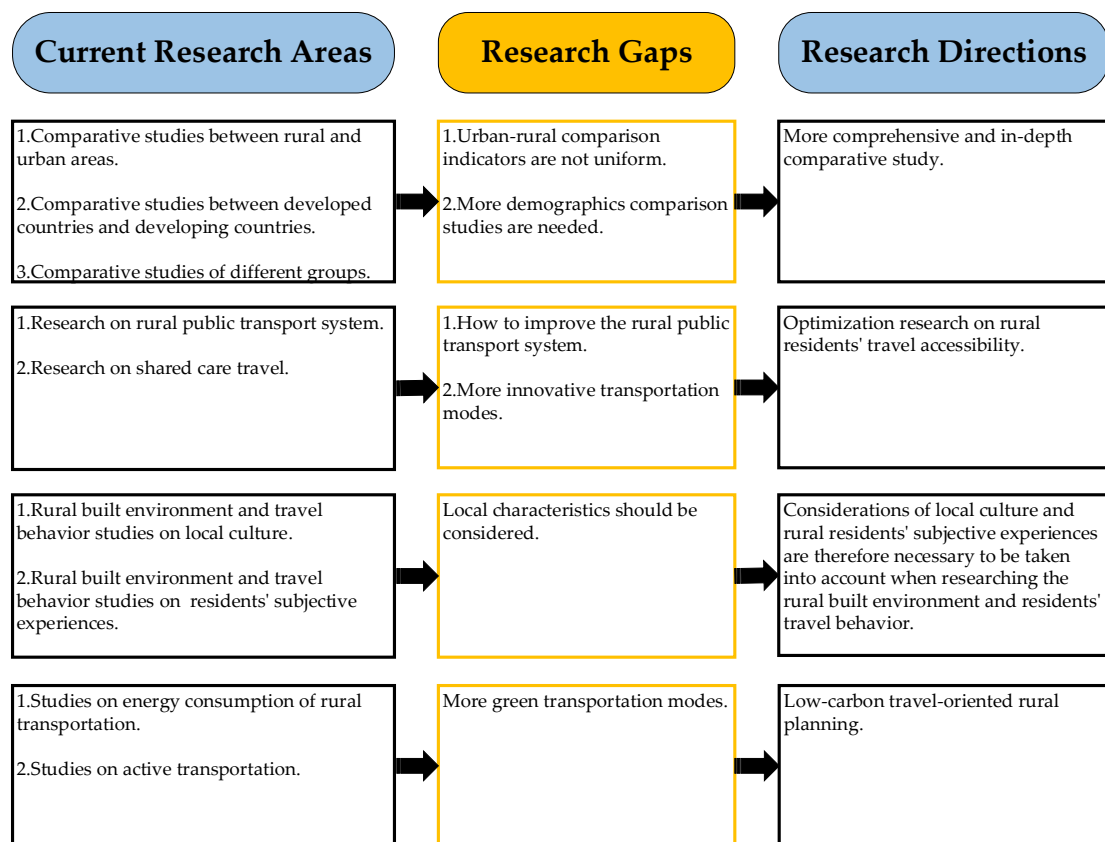


Fig. 7. Framework linking current research topics to future research directions

**Figure list:**

- Fig. 1. Flow chart of scientific analysis of literature on this research topic
- Fig. 2. Annual publications from 2005 to 2021 in the research field
- Fig. 3. Map of mainstream journals in the field of rural travel behavior
- Fig. 4. Map of co-occurrence of keywords
- Fig. 5. Map of co-authorship in the field of rural travel behavior
- Fig. 6. Map of countries actively engaged in this research topic
- Fig. 7. Framework linking current research topics to future research directions