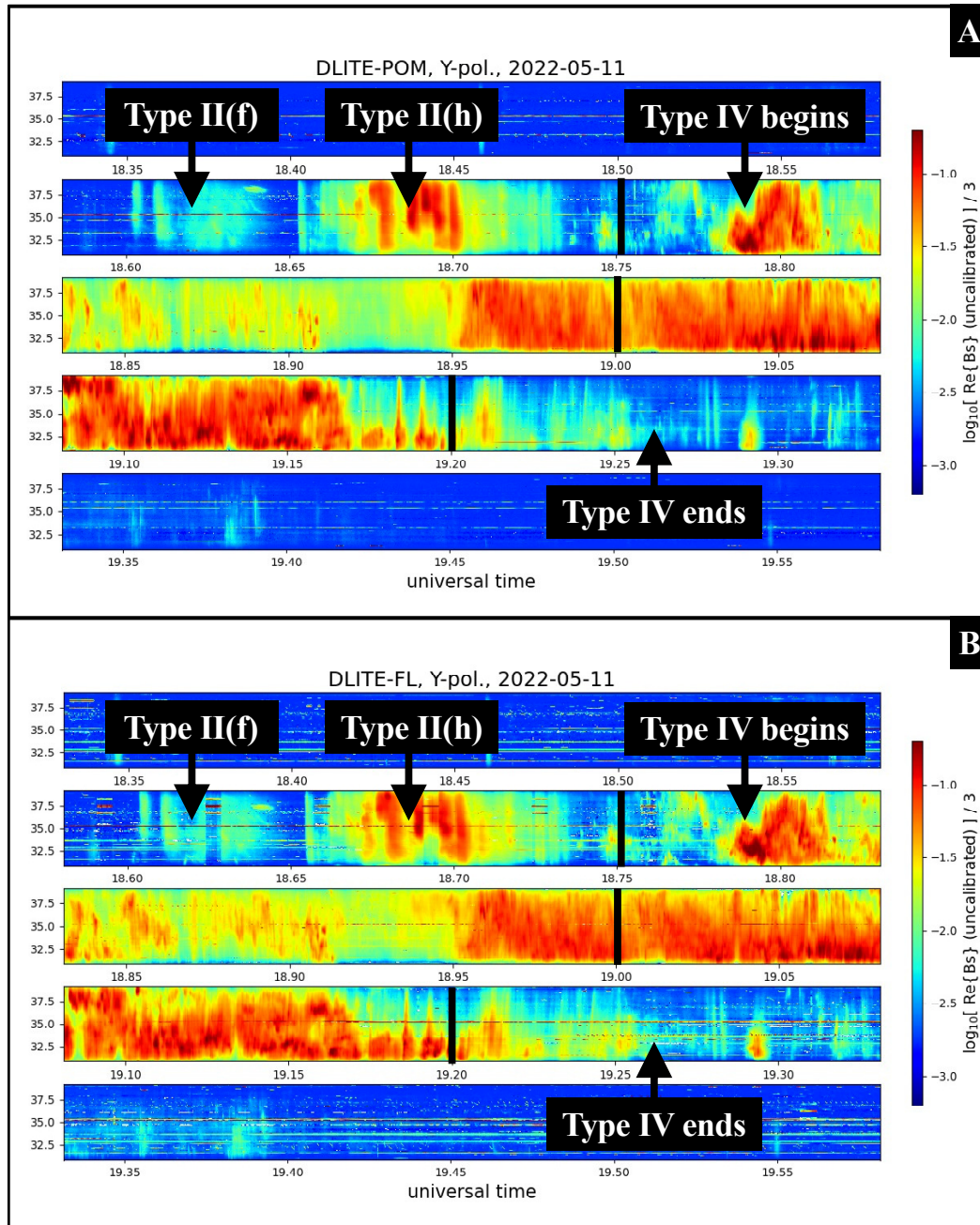


# Supplementary Material



**Figure S1.** A series of high-resolution solar radio bursts (SRBs) associated with a coronal mass ejection seen by DLITE arrays on 2022 May 11. Panels (A) and (B) show SRB detections by the DLITE-POM and DLITE-FL stations, respectively. The black vertical bars correspond to the times associated with panels (A) - (C) in Figure 2. Arrows indicate the Type II fundamental and harmonic (Type II(f) and Type II(h), respectively) SRBs as well as the beginning and end of the Type IV-moving SRB.