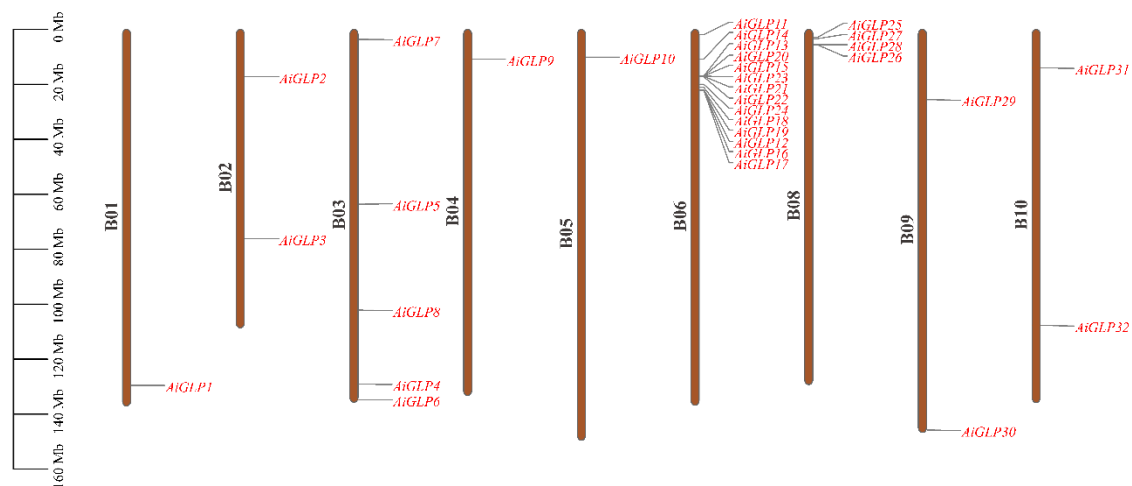


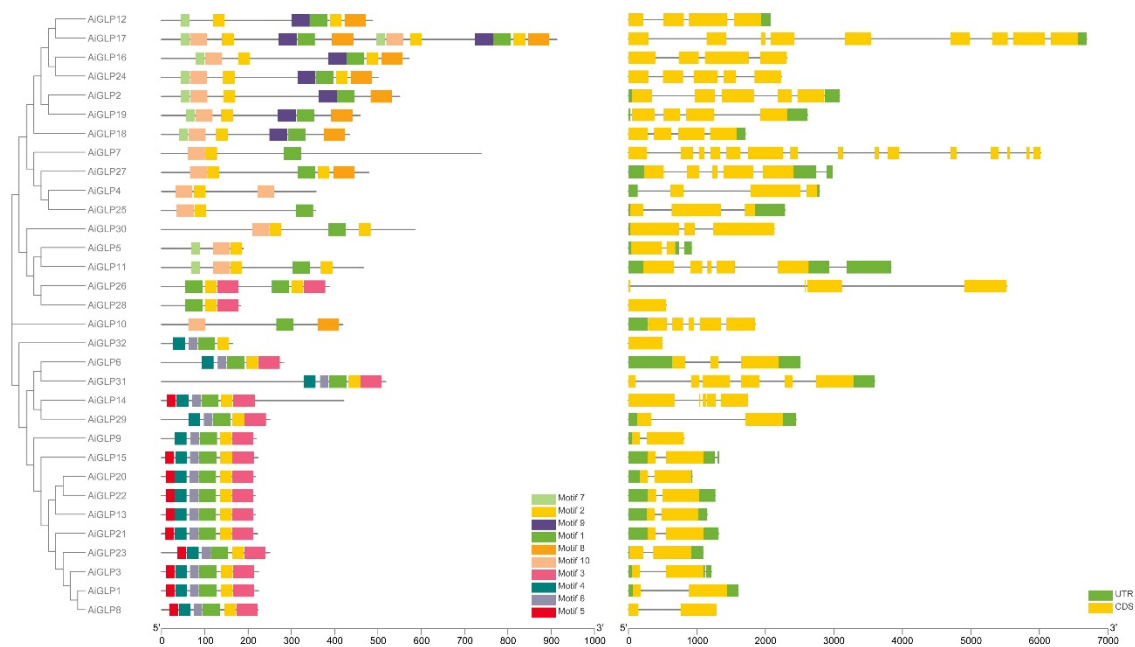
Supplementary Figure 1. Chromosomal distribution of *Arachis duranensis* Germin-like protein (*AdGLPs*) genes. Germin-like proteins are unevenly distributed in the genome of *A. duranensis*. ChrA06 possessed the highest number of GLPs (16 GLPs).

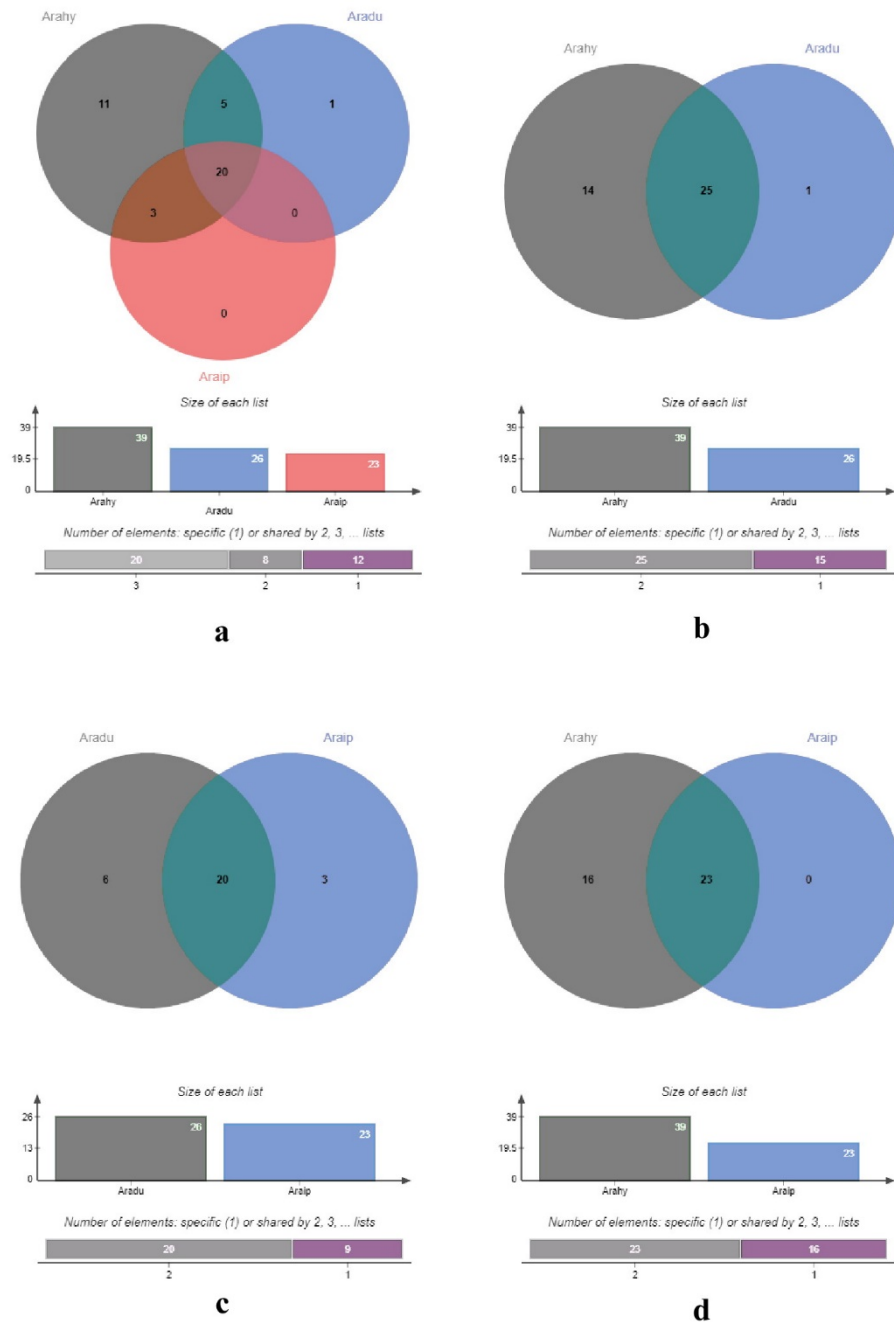


Supplementary Figure 2. Chromosomal distribution of *Arachis ipaensis* Germin-like protein (*AiGLPs*) genes. Germin-like proteins are unevenly distributed in the genome of *A. ipaensis*. ChrA03 possessed the highest number of GLPs (14 GLPs).



Supplementary Figure 3. Conserved motifs and gene structure (exons-introns distribution) analysis of *Arachis duranensis* Germin-like protein (*AdGLPs*) genes.





Supplementary Figure 5. Orthologous genes' clusters among diploid and tetraploid species of peanut. (a) orthologous gene clusters among *A. hypogaea*, *A. duranensis*, and *A. ipaensis* (b) orthologous gene clusters among *A. hypogaea* and *A. duranensis* (c) orthologous gene clusters among *A. duranensis* and *A. ipaensis* (d) orthologous gene clusters among *A. hypogaea* and *A. ipaensis*.