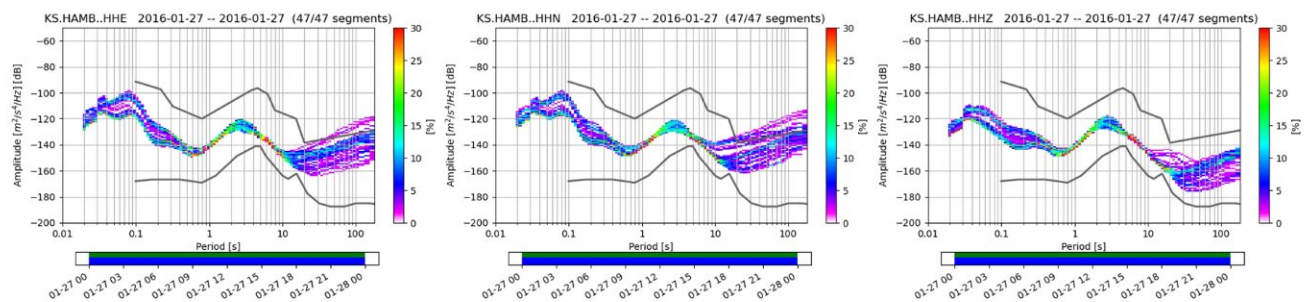


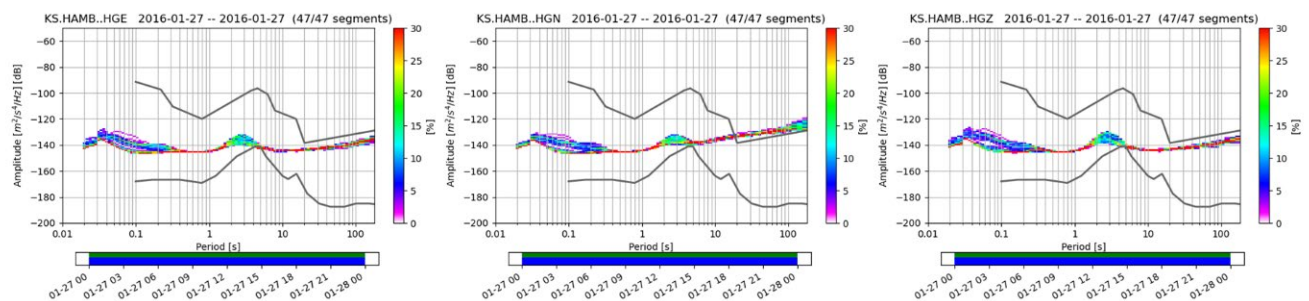
Supplementary Material

Supplementary Figure 1. Ambient noise was calculated power spectral density (PSD)

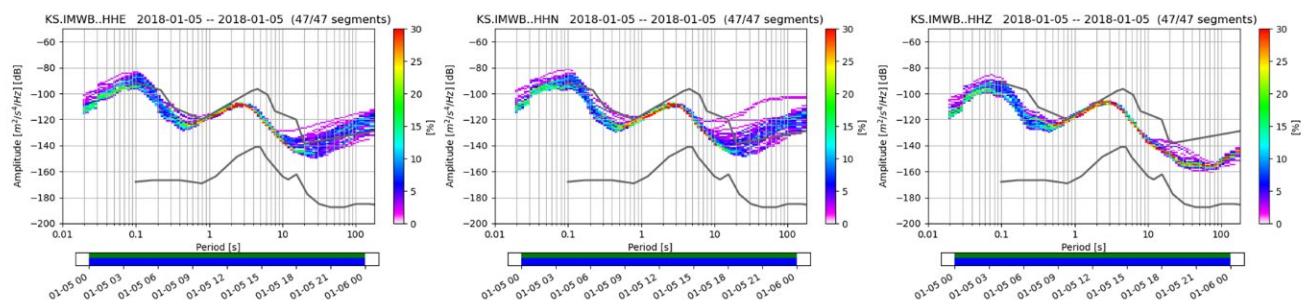
(a) HAMB station : ground surface sensor (0 m) : EW - NS - UD



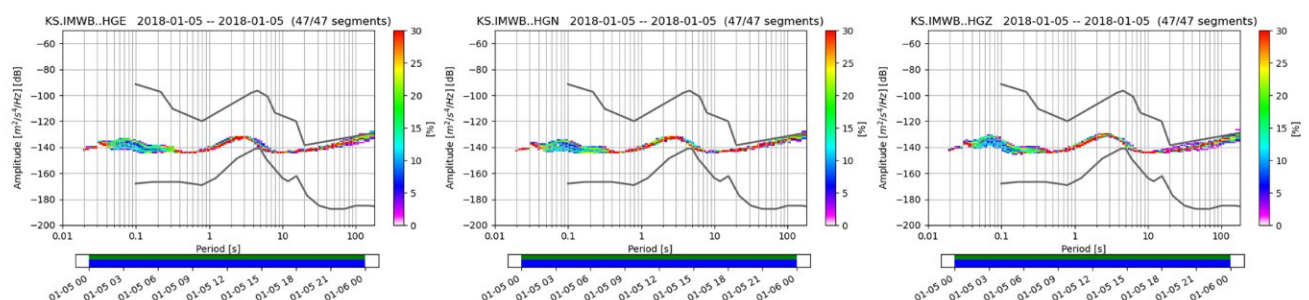
(b) HAMB station : borehole sensor (20 m) : EW - NS - UD



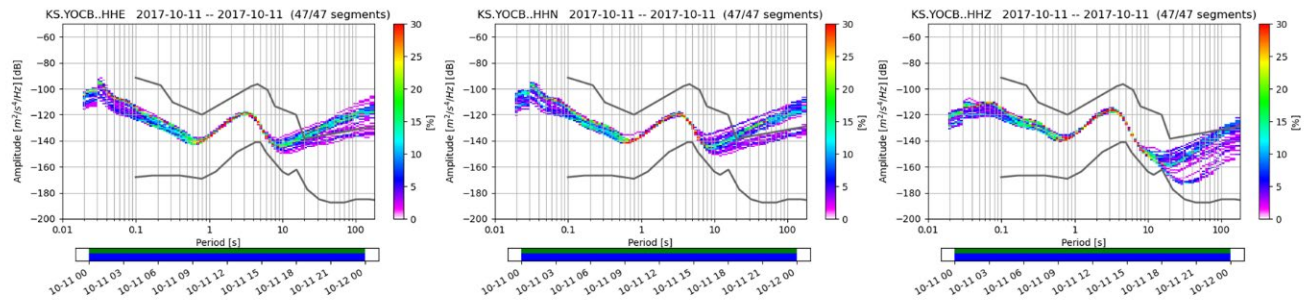
(c) IMWB station : ground surface sensor (0 m) : EW - NS - UD



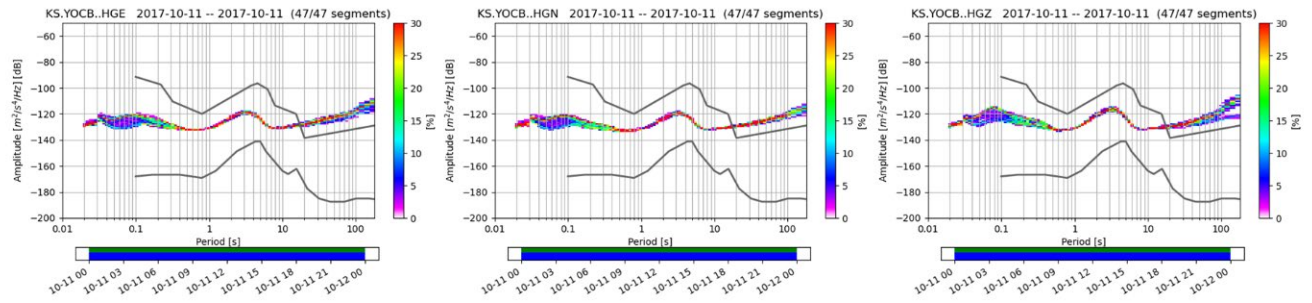
(d) IMWB station : borehole sensor (20 m) : EW - NS - UD



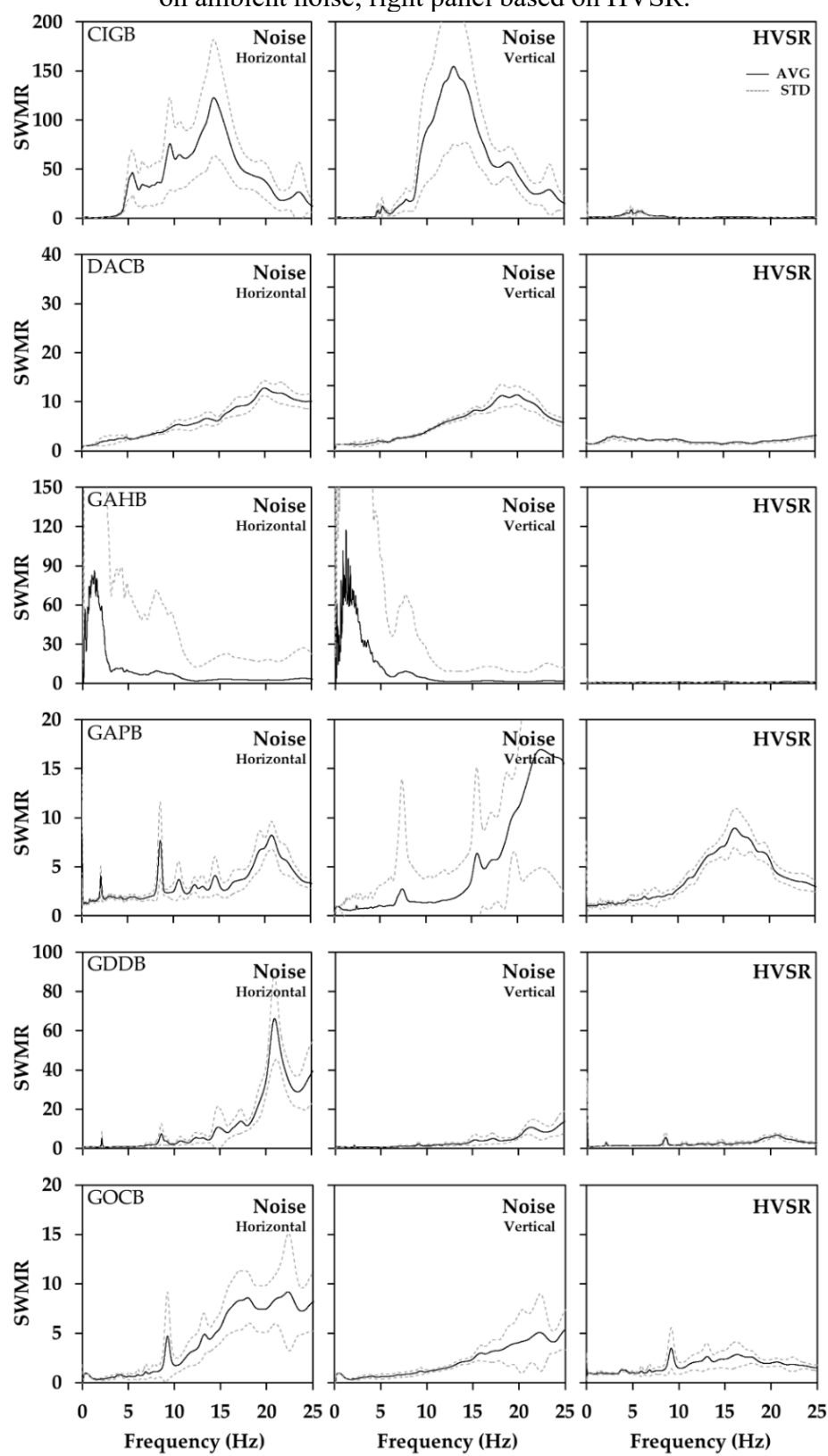
(e) YOCB station : ground surface sensor (0 m) / EW - NS - UD

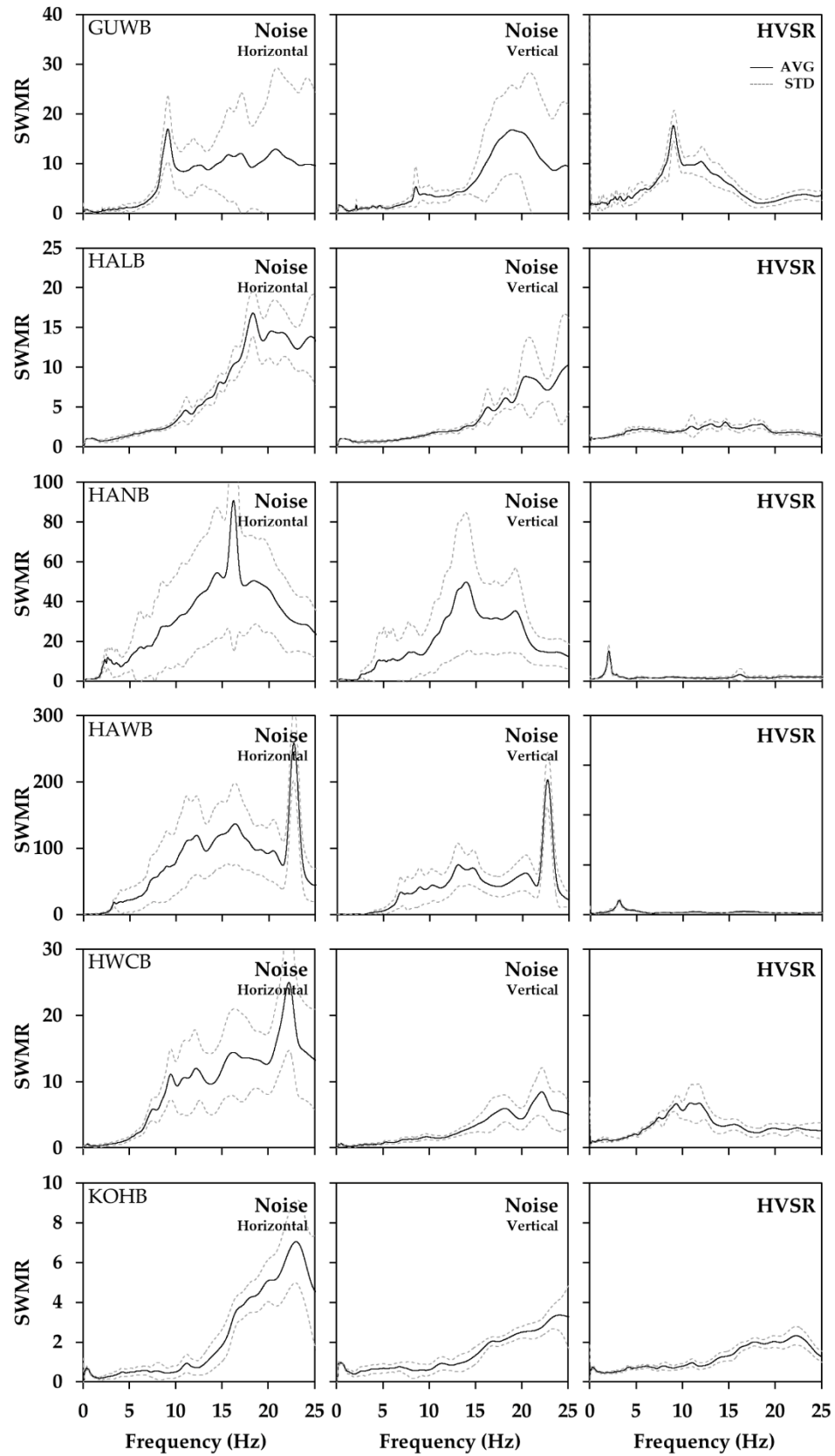


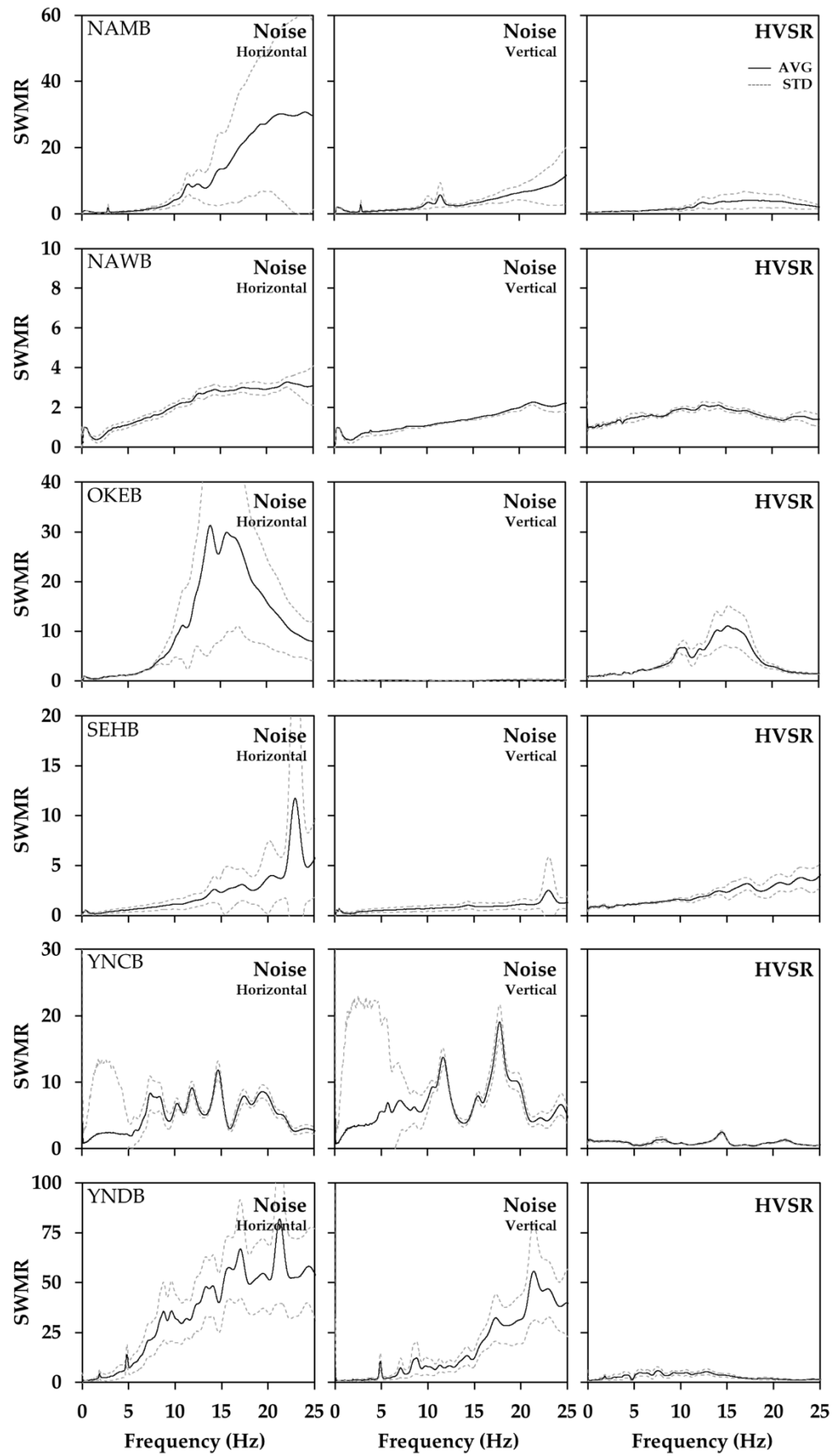
(f) YOCB station : borehole sensor (20 m) / EW - NS - UD

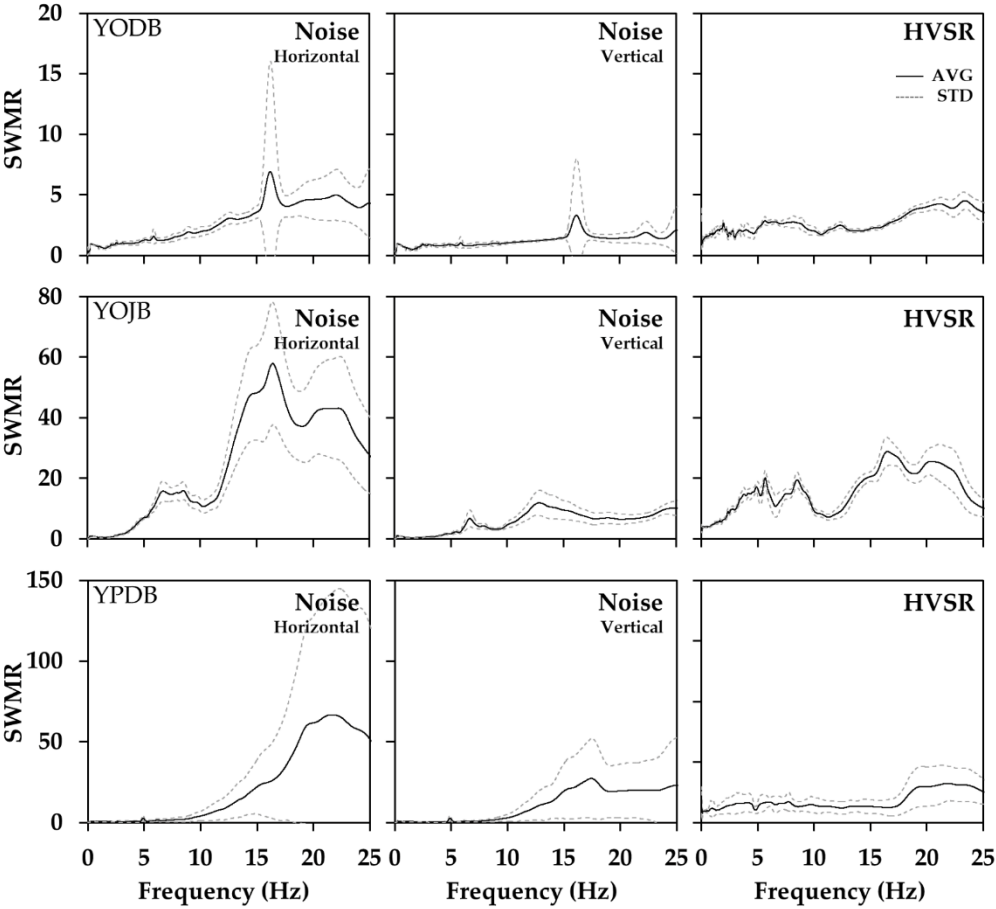


Supplementary Figure 2. Surface-to-within motion ratio (SWMR); left and center panel based on ambient noise; right panel based on HVSR.









Supplementary Figure 3. Transfer functions

