

Supplementary Figures and legends

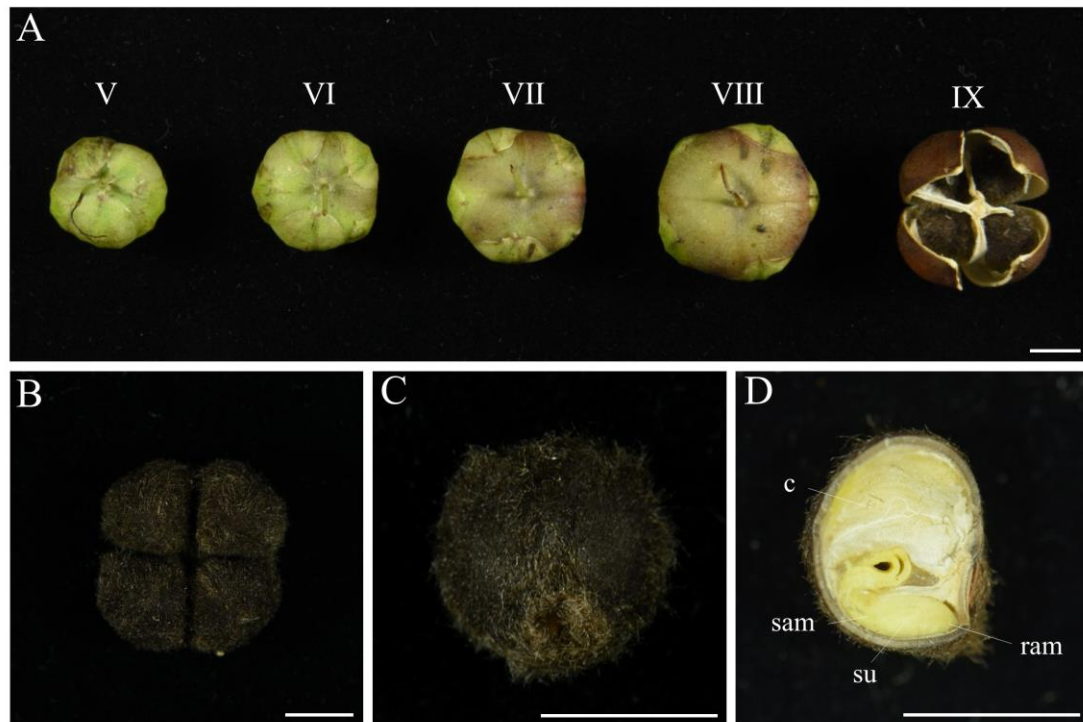


Figure S1. Fruit and seed morphologies of IPC. (A) Figures show the top view of fruits at IV-VIII stages. Bar = 0.5 cm. (B,C) Figures show the IPC mature seeds. Bar = 0.5 cm. (D) Images show the a dissected seed. Bar = 0.5 cm.

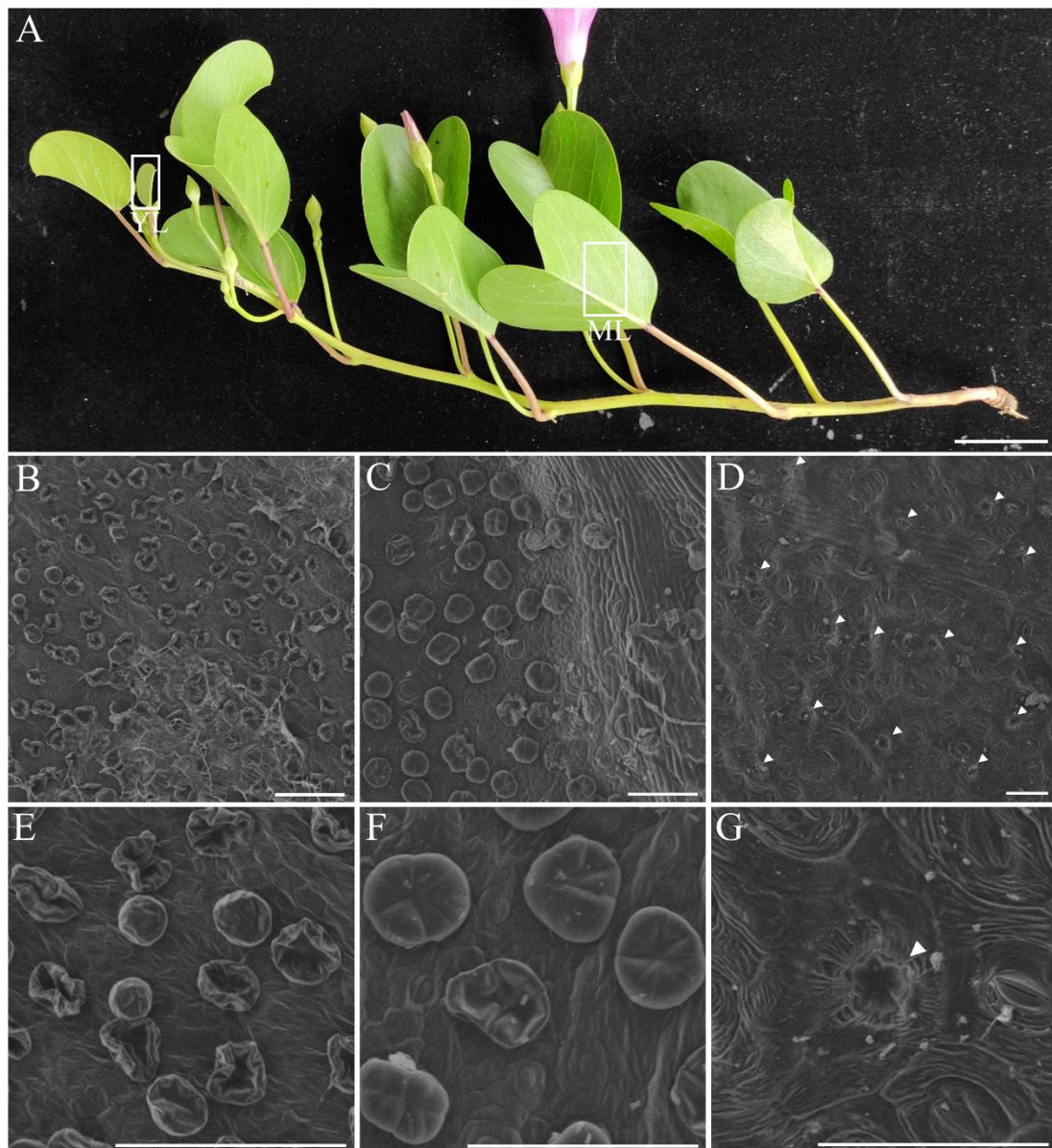


Figure S2. The glandular trichomes on the surfaces of young and mature leaves. (A) A flowering branch of IPC showed the leaves and floral inflorescence. (B, E) The GTs on the adaxial epidermis of IPC young leaf. (C, F) The GTs on the abaxial epidermis of IPC young leaf. (D, G) The degraded GTs on the abaxial epidermis of the IPC mature leaf. (YL, young leaf; ML, mature leaf; Bar for A = 2 cm; Bars for B-G = 100 μm .)

Table S1. Estimation of IPC genome size by flow cytometry analysis.

	Replicate s	Intensity Reference	Intensity IPC	Ratio	Genome Size_Ref	Genome Size_IPC
External Reference: Tomato	1	43.63	47.69	1.09	900.00	983.75
	2	43.60	47.67	1.09	900.00	984.01
	3	43.56	47.60	1.09	900.00	983.47
Internal Reference: Rice	1	18.90	48.71	2.58	420.00	1082.44
	2	18.38	47.31	2.57	420.00	1081.08
	3	18.33	47.29	2.58	420.00	1083.57

Table S2. The germination and dormancy of IPC seeds.

Seed type	Treatment	Swollen rate_Mean	Swollen rate_SD	Germinaiton rate_Mean	Germination rate_SD
FH seeds	Seed coats intact	0.67%	0.54%	0.00%	0.00%
	Seed coats broke down	99.78%	0.31%	11.11%	4.94%
AR seeds	Seed coats intact	0.22%	0.31%	0.00%	0.00%
	Seed coats broke down	100.00%	0.00%	88.44%	2.27%