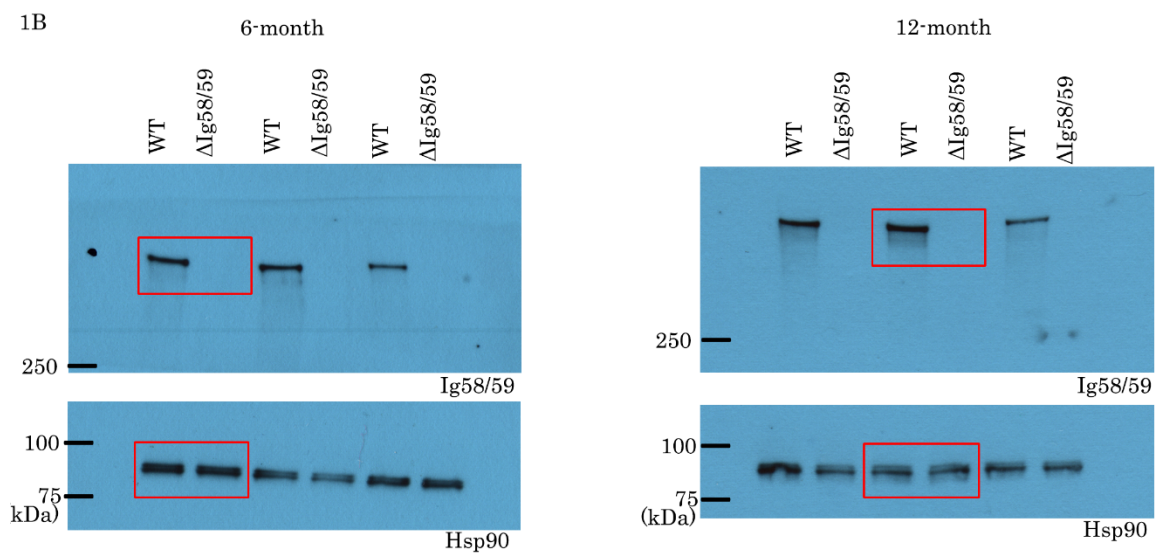
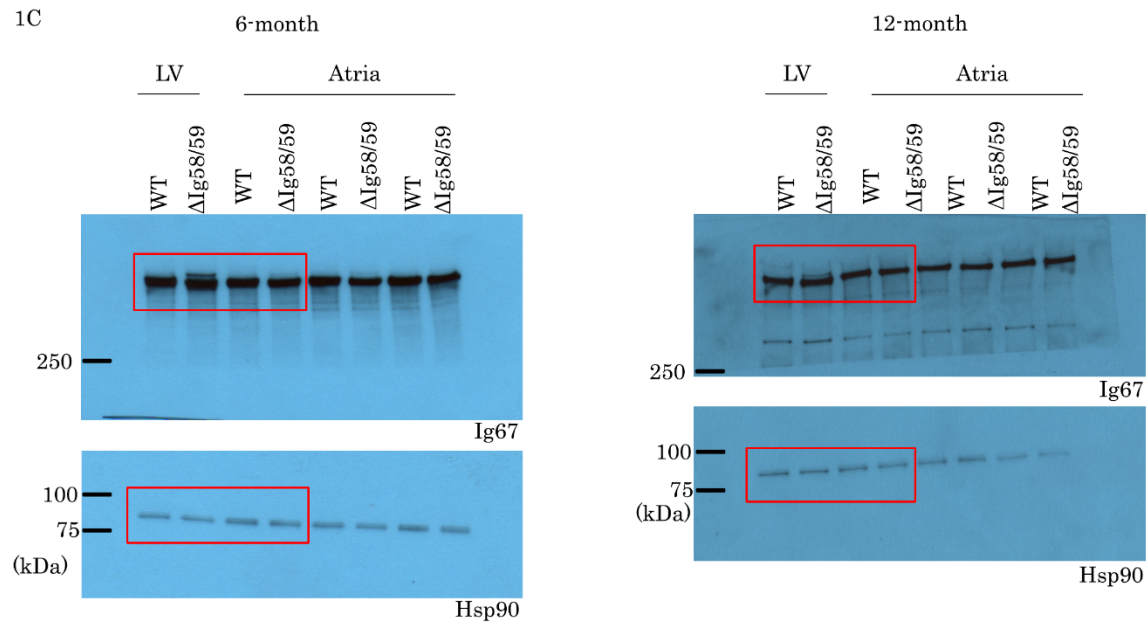


Original blots in Fig. 1A

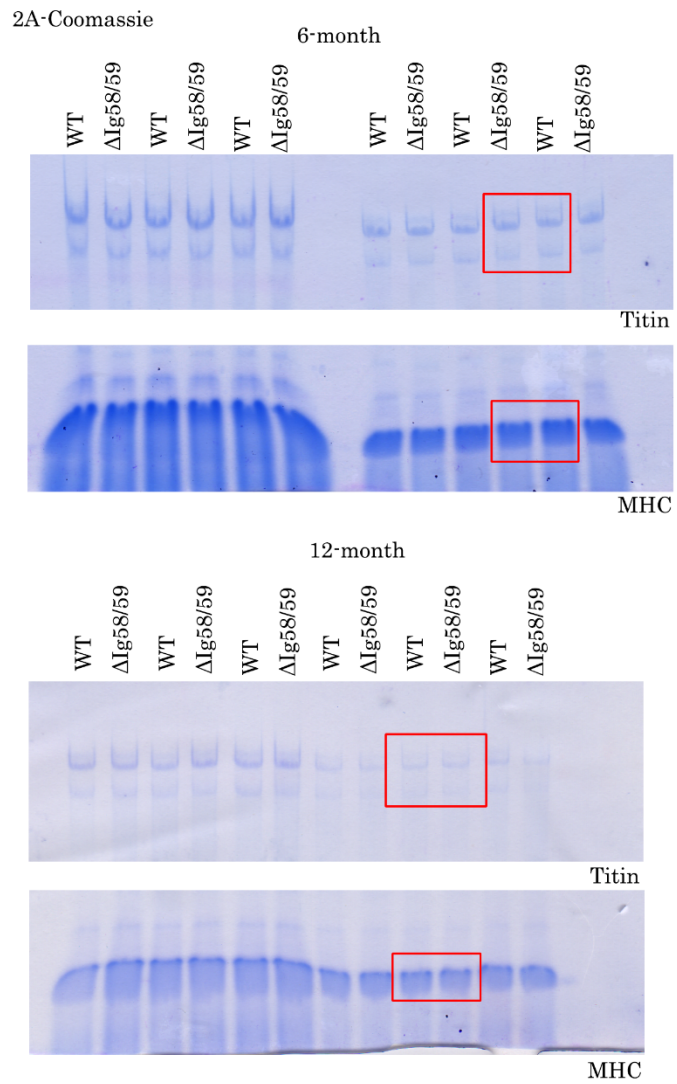


Original blots in Fig. 1B

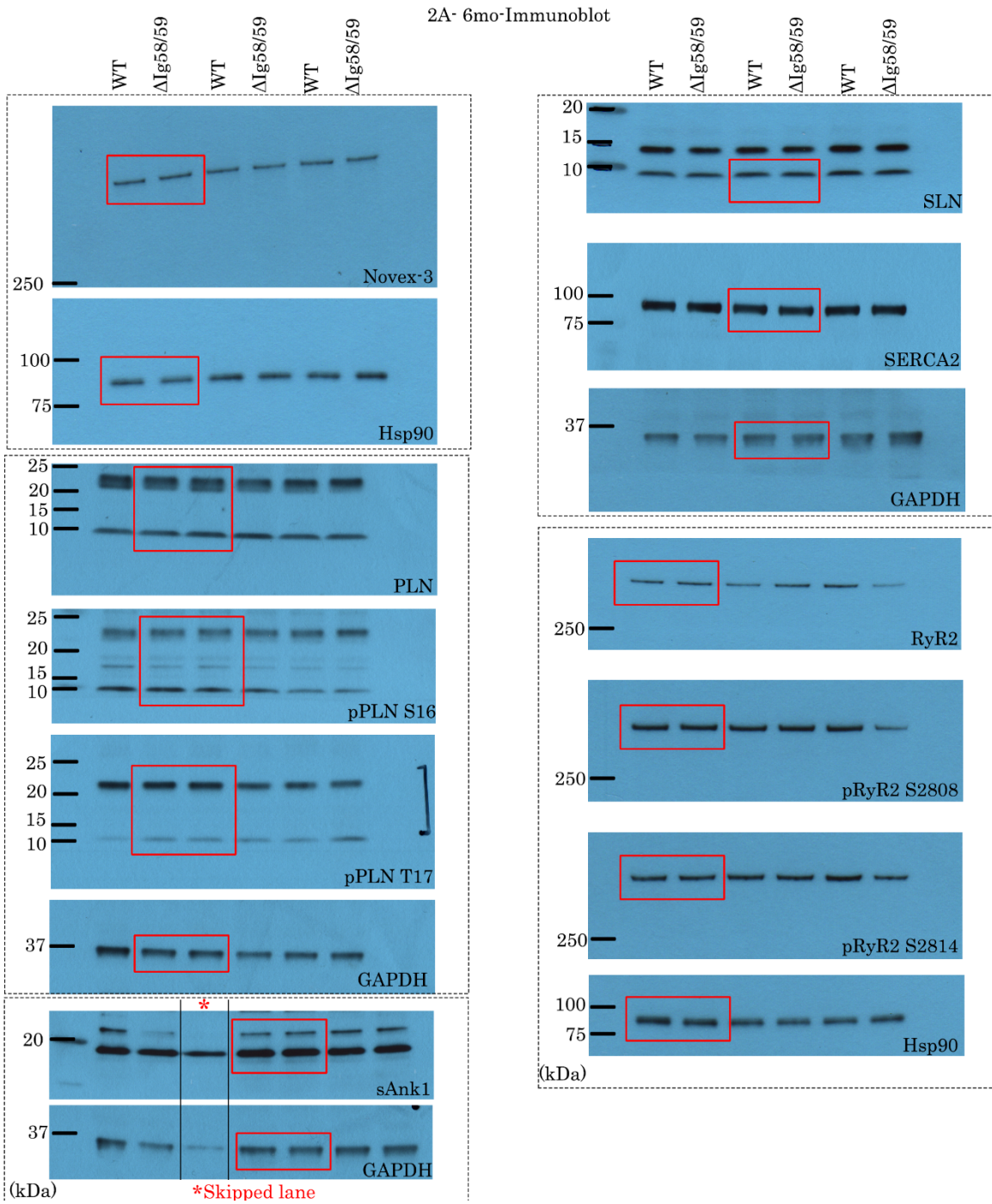
1C



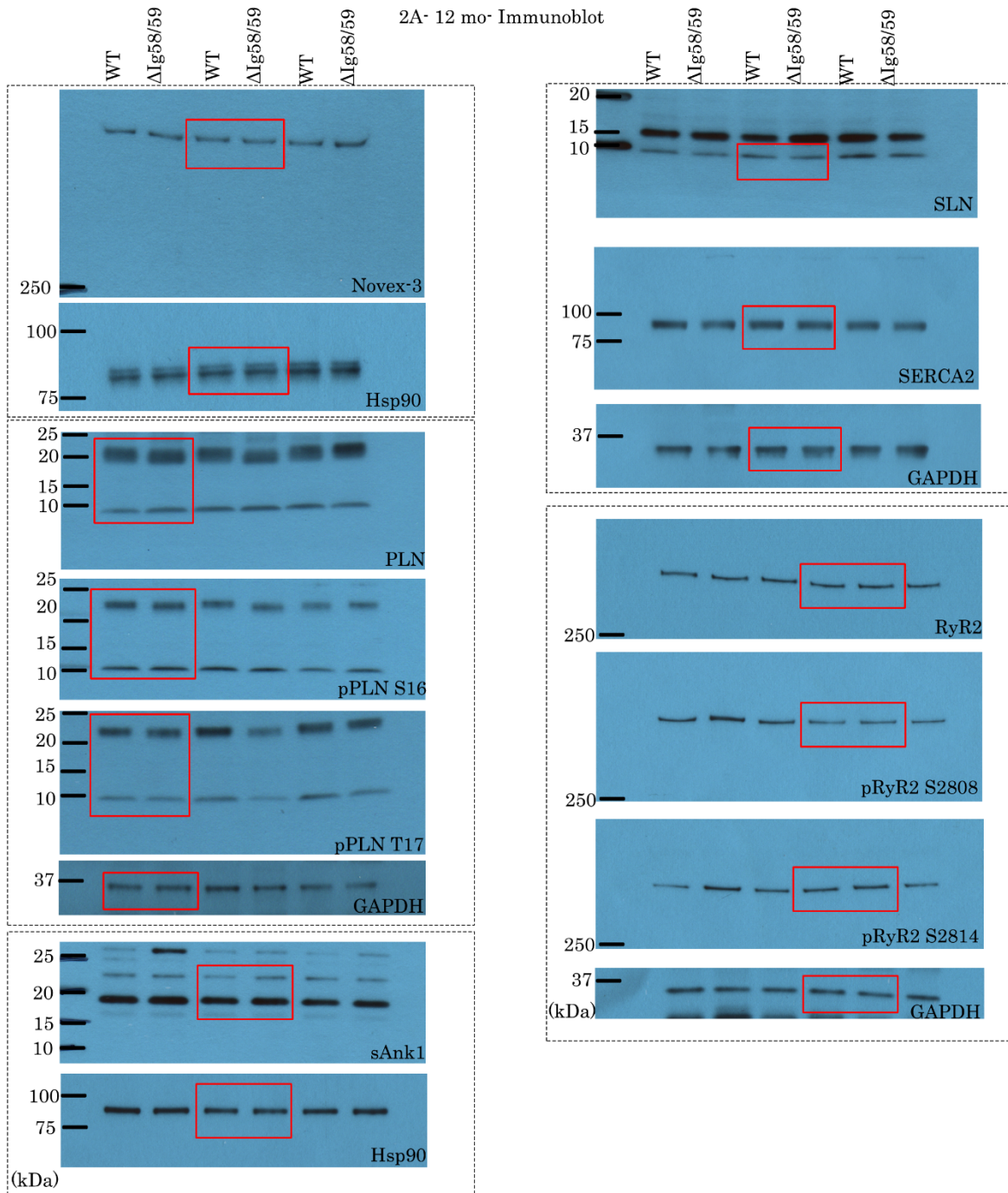
Original blots in Fig. 1C



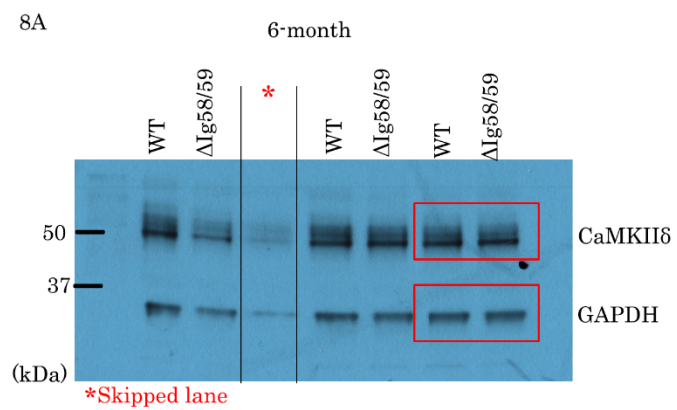
Original Coomassie Gels in Fig. 2A



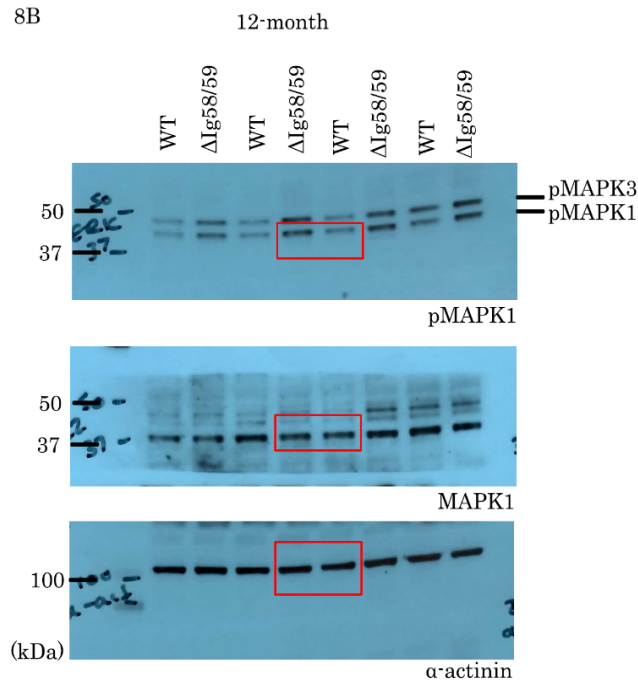
Original blots in Fig. 2A (6-month)



Original blots in Fig. 2A (12 month)



Original blots in Fig. 8A



Original blots in Fig. 8B: The phospho-p44/p42 antibody (#4370; Cell Signaling) recognizes both phospho-MAPK1 (p42; also known as ERK2) and phospho-MAPK3 (p44; also known as ERK1). Phospho-MAPK3 appears to follow the same trend as phospho-MAPK1 in Δ Ig58/59 atria, however since our proteomics study did not identify it as a differentially regulated kinase, we did not probe for total levels of MAPK3. Please note that Figure 8 only shows the phosphorylation levels of MAPK1 (that was identified in our proteomics screen), as illustrated by the red boxed area.