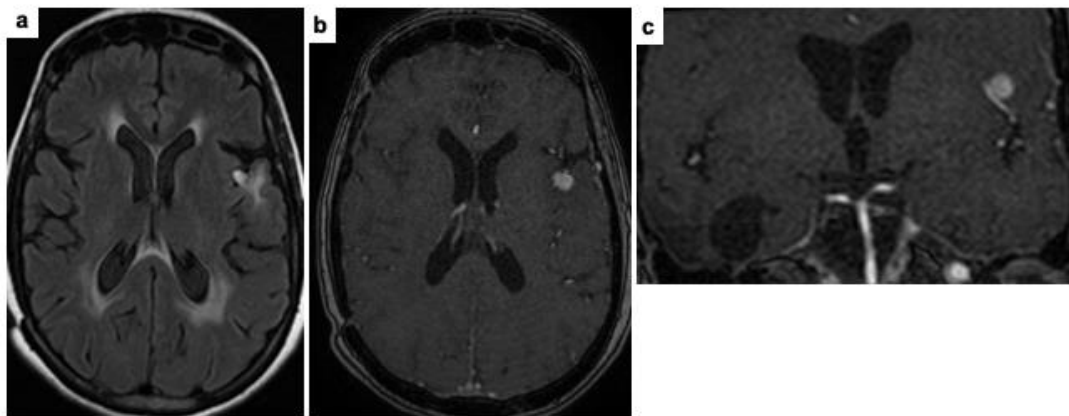


Supplementary Material

Case Report: *Regression of Glioblastoma after flavivirus infection*

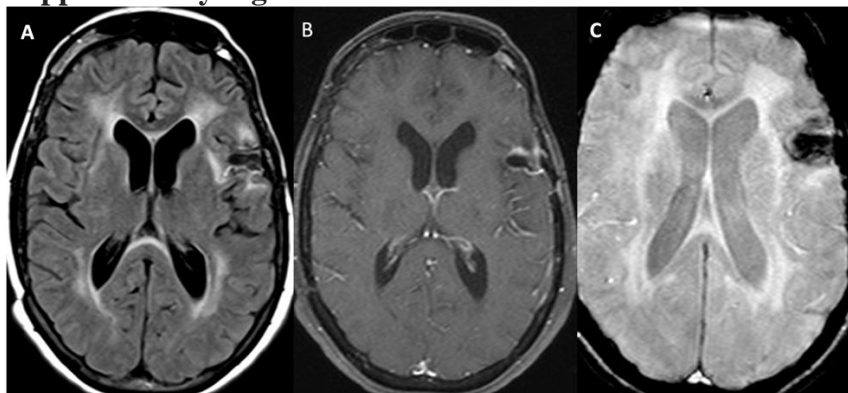
Patricia P. Garcez^{1*}, André Guasti^{2,3}, Nina Ventura^{2,4}, Luiza M. Higa⁵, Felipe Andreiuolo², Gabriella Pinheiro A. Freitas¹, Adriana de Souza Azevedo Soares⁶, Elena Cristina Caride⁶, Leila Chimelli², Luiz Gustavo Dubois^{2,7}, Orlando da Costa Ferreira Júnior⁵, Amilcar Tanuri⁵, Vivaldo Moura-Neto^{1,2}, Paulo Niemeyer²

Supplementary Figure 1:



Brain MRI before surgical clipping in May 2019. Axial FLAIR (a), axial (b) and coronal (c) post-contrast Time of Flight sequence demonstrate a small, rounded lesion, with contrast enhancement, located in the left Sylvian fissure, in contact with M3 middle cerebral artery. FLAIR image (a) also demonstrates confluent periventricular white matter hyperintense areas, which could be related to radiotherapy.

Supplementary Figure 2:



Brain MRI after surgical clipping in May 2019. Axial FLAIR (A), post-contrast axial T1-weighted (B) and susceptibility weighted (C) images demonstrate manipulation at the right inferior frontal gyrus/superior insula, with hemosiderin/ferritin deposits.