

Supplementary material

to accompany
“Morphological adaptations of Hooded Crows (*Corvus cornix*) to urbanization”
by Benmazouz et al.

Contents

Figure S1 – Interaction plots of body size variables in Analysis 2

Figure S2 – Mean annual temperature in the four study areas

Figure S3 – Aerial view of the ZOO, SPC and OST areas and trapping locations in Debrecen

Figure S1

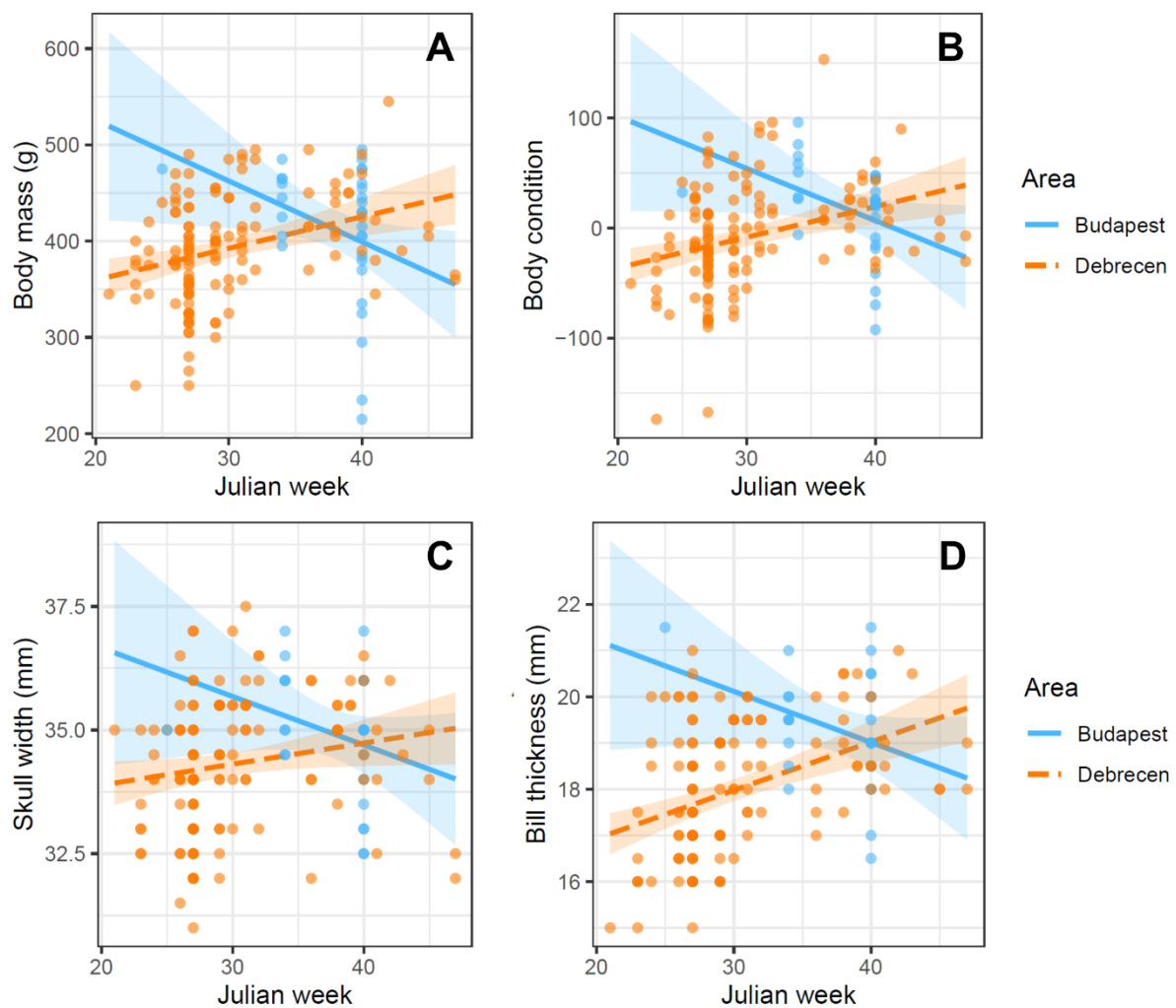


Figure S1. Interaction plots for seasonal differences in body mass (A), body condition (B), skull width (C) and bill thickness (D) of juvenile Hooded Crows from two cities (Budapest, Debrecen).

Figure S2

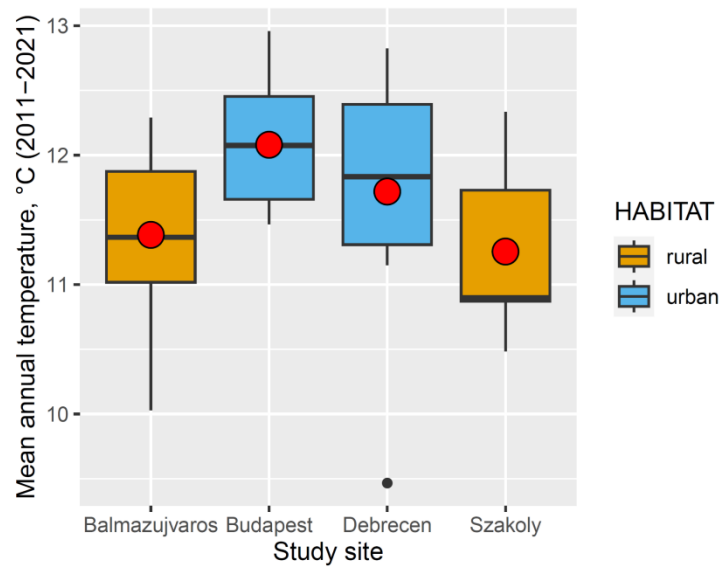


Figure S2. Mean annual temperature between 2011 and 2021 in the four study areas. The plot depicts the median (thick horizontal line), 25% and 75% quartiles (box), min and max values (whiskers) and mean values (red dots).

Figure S3



Figure S3. Aerial view of the OST, ZOO and SPC areas (yellow polygons) and trapping locations (orange diamonds) in Debrecen city. Source: Google Earth