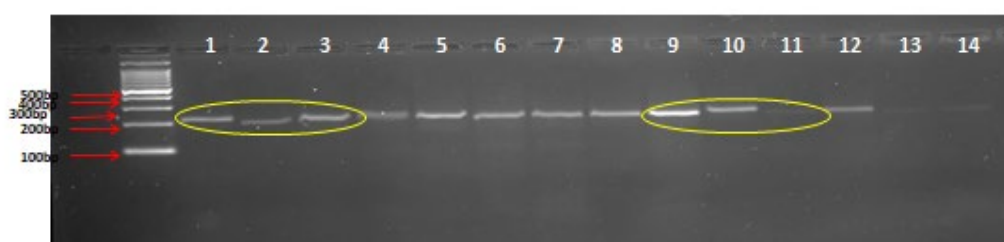
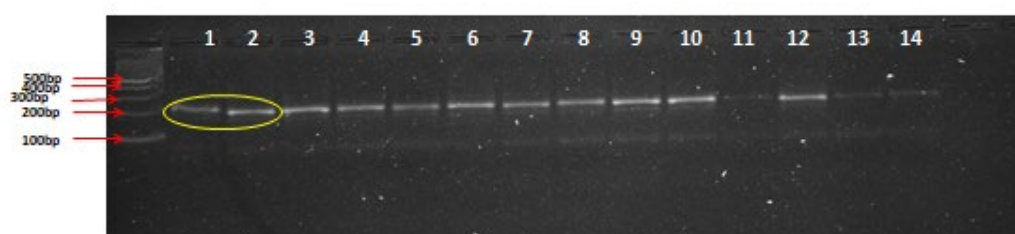


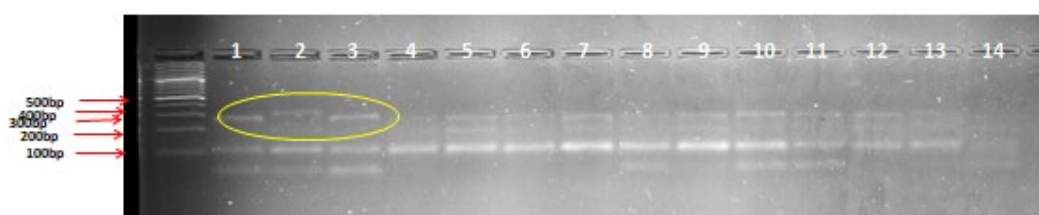
Supplementary fig.1: Dendrogram constructed from the SSR data, using Jaccard's coefficient of similarity and UPGMA clustering



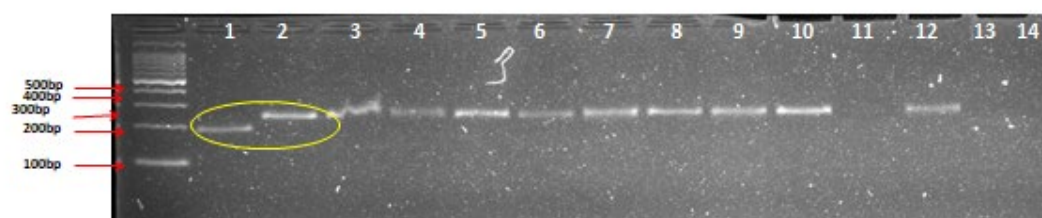
Supplementary fig. 2: Banding pattern of SSR locus EM-131 for 14 parental lines of brinjal



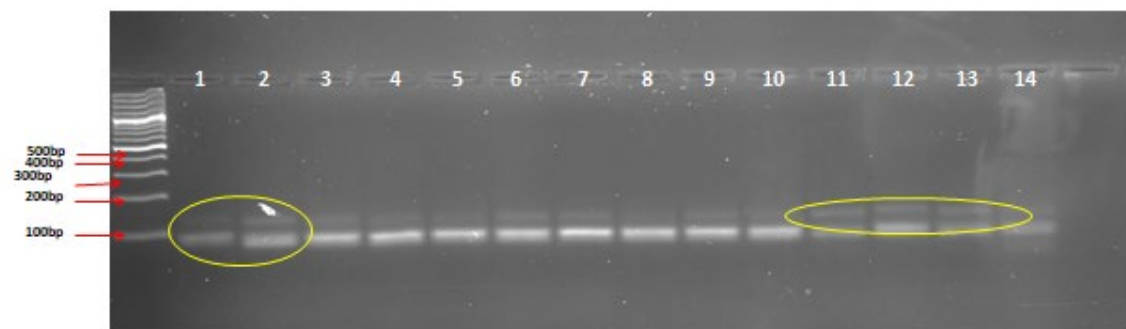
Supplementary fig. 3: Banding pattern of SSR locus EM-140 for 14 parental lines of brinjal



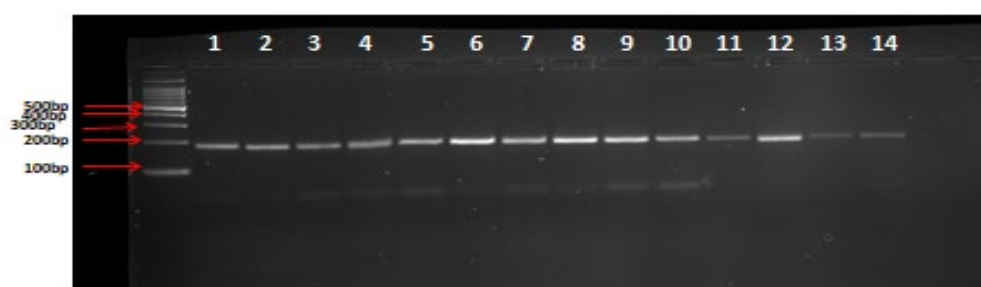
Supplementary fig. 4: Banding pattern of SSR locus EM-155 for 14 parental lines of brinjal



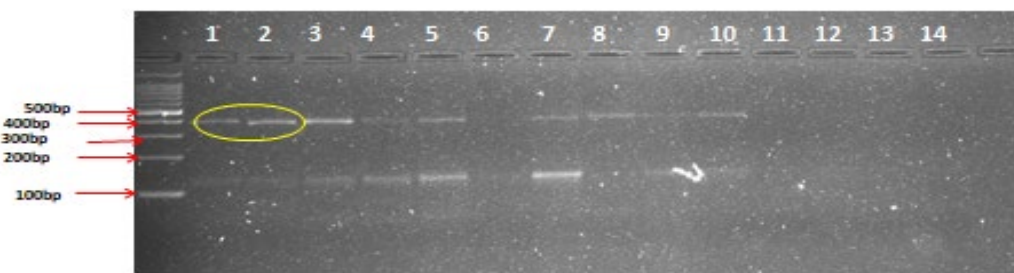
Supplementary fig. 5: Banding pattern of SSR locus EM-141 for 14 parental lines of brinjal



Supplementary fig. 6: Banding pattern of SSR locus EM-117 for 14 parental lines of brinjal



Supplementary fig. 7: Banding pattern of SSR locus EM-133 for 14 parental lines of brinjal



Supplementary fig. 8: Banding pattern of SSR locus EM-145 for 14 parental lines of brinjal

Left most lane corresponds to DNA ladder and amplified DNA samples were loaded in the lanes following the order of genotypes as

- | | |
|-----------|----------------|
| 1- RKML1 | 8- RKML 11 |
| 2- RKML 2 | 9- RKML 26 |
| 3- RKML 3 | 10- RKML 34 |
| 4- RKML 4 | 11- PPC |
| 5- RKML 5 | 12- PPL |
| 6- RKML 6 | 13- S.Pratibha |
| 7- RKML 7 | 14- S.Shyamli |

