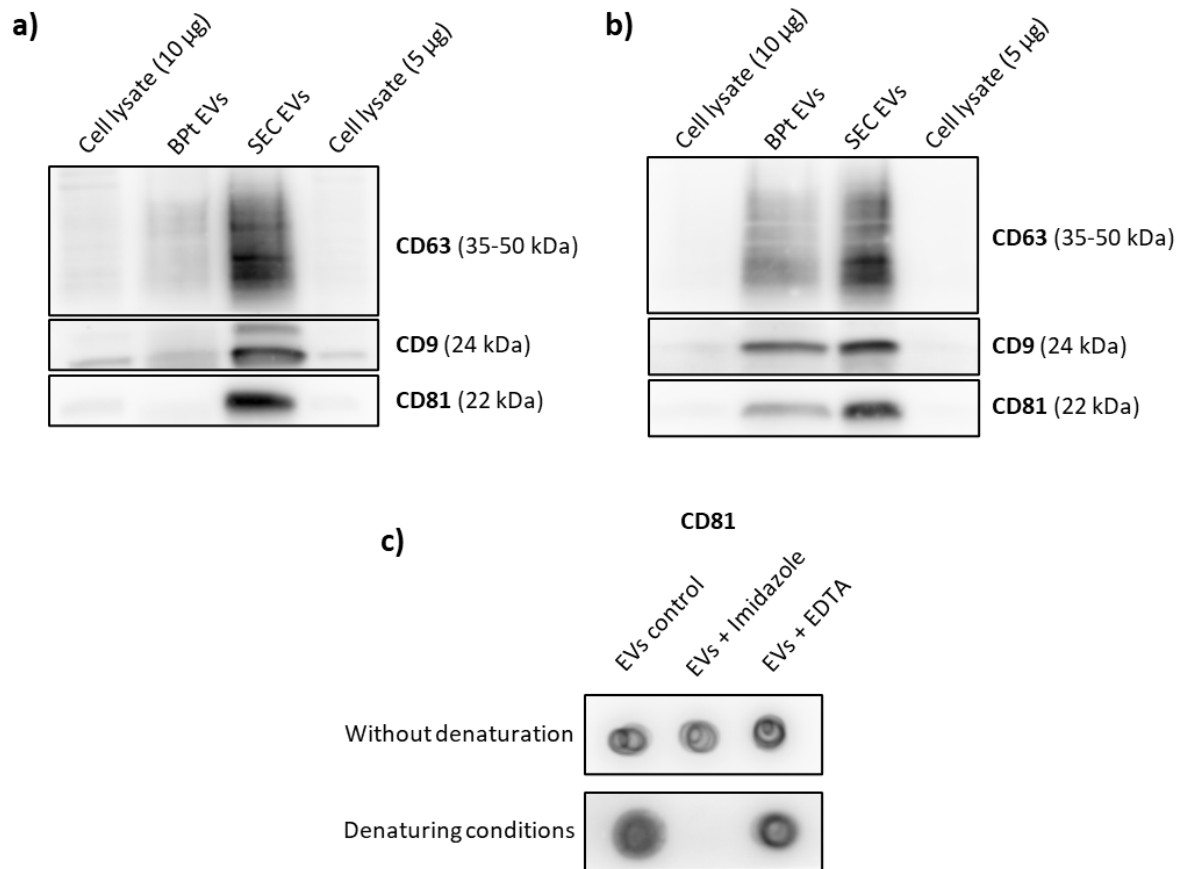


## Supplementary Figure 1



**Supplementary Figure 1. Detection of tetraspanin EV markers by western blot and dot blot analyses using different elution reagents.** For EV isolation using BPt-based affinity chromatography, 40 µl of LA-Co agarose, 1 mg of BPt and 200 µl of concentrated conditioned media were used. After washing, bounded EVs were eluted from agarose by incubation with 100 µl of filtrated PBS containing **a)** 0.5M imidazole or **b)** 0.1M EDTA. For EVs isolation by SEC, 400µl of concentrated conditioned media were employed.  $2 \times 10^9$  EVs were loaded in each lane after lysis with non-reducing Laemmli buffer. **c)** EVs previously isolated by SEC were diluted 1:1 with PBS (Control), PBS/imidazole 1M or PBS/EDTA 0.2M. 1 µl of each sample was directly (without denaturation) spotted in a nitrocellulose membrane, or after lysis with non-reducing Laemmli buffer and boiling at 96°C (denaturing conditions), for CD81 recognition by dot blot.