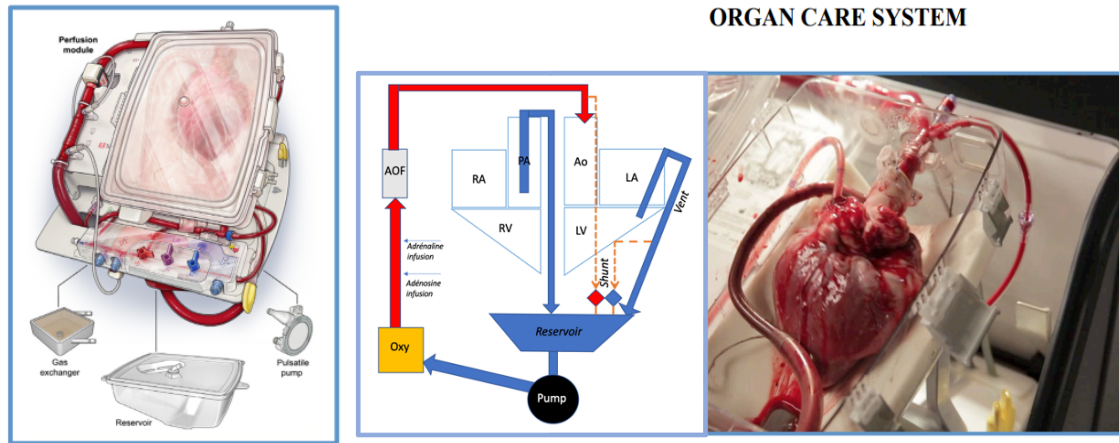


SUPPLEMENTARY APPENDIX



Supplementary Figure 1: Organ Care System (OCS), Transmedics

Ao: aortic root; LV: left ventricle; LA: left atrium; RA: right atrium; RV: right ventricle; AOF: aortic flow.



Supplementary Figure 2 : XVIVO Heart Perfusion System.

The heart is submerged in cold blood and cardioplegia solution. Continuous, hypothermic perfusion is established via the aortic root during transport.