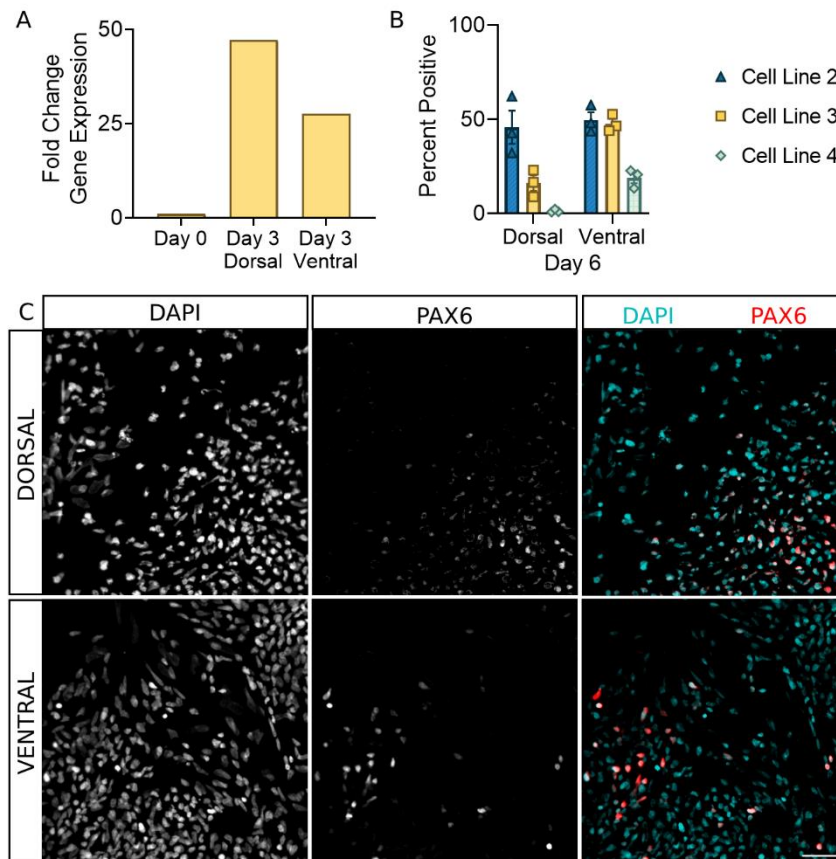


## Supplementary Material

### 1 Supplementary Figures



**Supplementary Figure 1. Spinal progenitor marker PAX6 is expressed in both dorsal and ventral sNPCs.** (A) Fold change in gene expression as determined by RT-qPCR indicates detectable increases in *PAX6* mRNA by day 3 in both dorsal and ventral cells (n=1, Cell Line 3). (B) PAX6 positive cells across multiple cell lines (n=3/line) as a percentage of DAPI<sup>+</sup> area. Error Bars = SEM. (C) Representative images (Cell Line 2) of PAX6 expression at Day 6 in dorsal and ventral populations. Scale bar = 50 um.