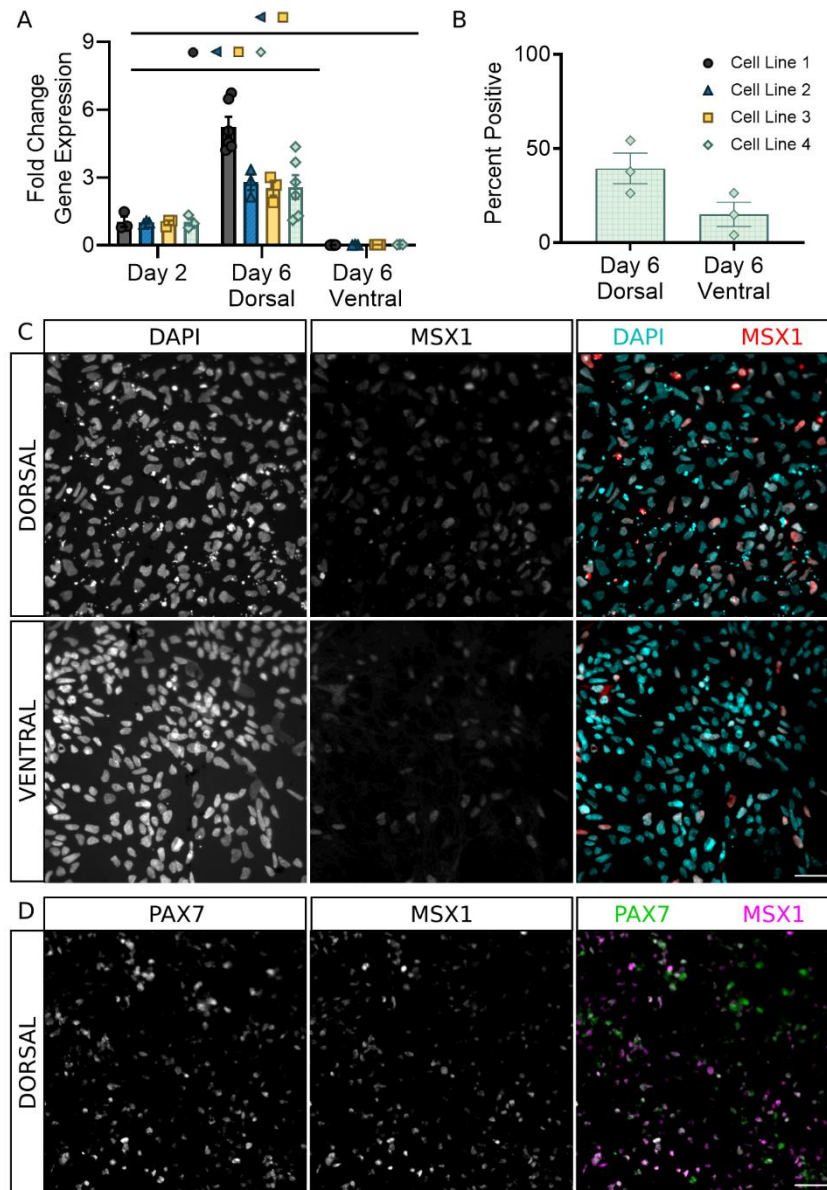


Supplementary Material

1 Supplementary Figures and Tables



Supplementary Figure 2. Dorsal progenitor marker MSX1 is expressed in dorsal sNPCs. (A) Fold change in gene expression as determined by RT-qPCR indicates detectable increases in MSX1 mRNA by day 6 in both dorsal and ventral cells (n=3-5 per line). While dsNPCs show a significant increase in MSX1 expression, vsNPCs show a significant decrease compared to day two ($p < 0.05$, One way ANOVA) (B) MSX1 positive cells as a percent of DAPI⁺ area (Cell Line 4). (C) Representative images (Cell Line 4) of MSX1 expression at Day 6 in dorsal and ventral populations. (D) Representative images (Cell Line 2) showing co-expression of PAX7 and MSX1 in dsNPCs at Day 6. Scale bar = 50 μ m. Error Bars = SEM.