

Figure S1 – Microelements content for subspecies. a) zinc, b) magnesium, c) iron, d) copper, e) cadmium, f) selenium. Boxplots with different letters are significantly different (ANOVA with Tukey's HSD, $\alpha = 0.05$).

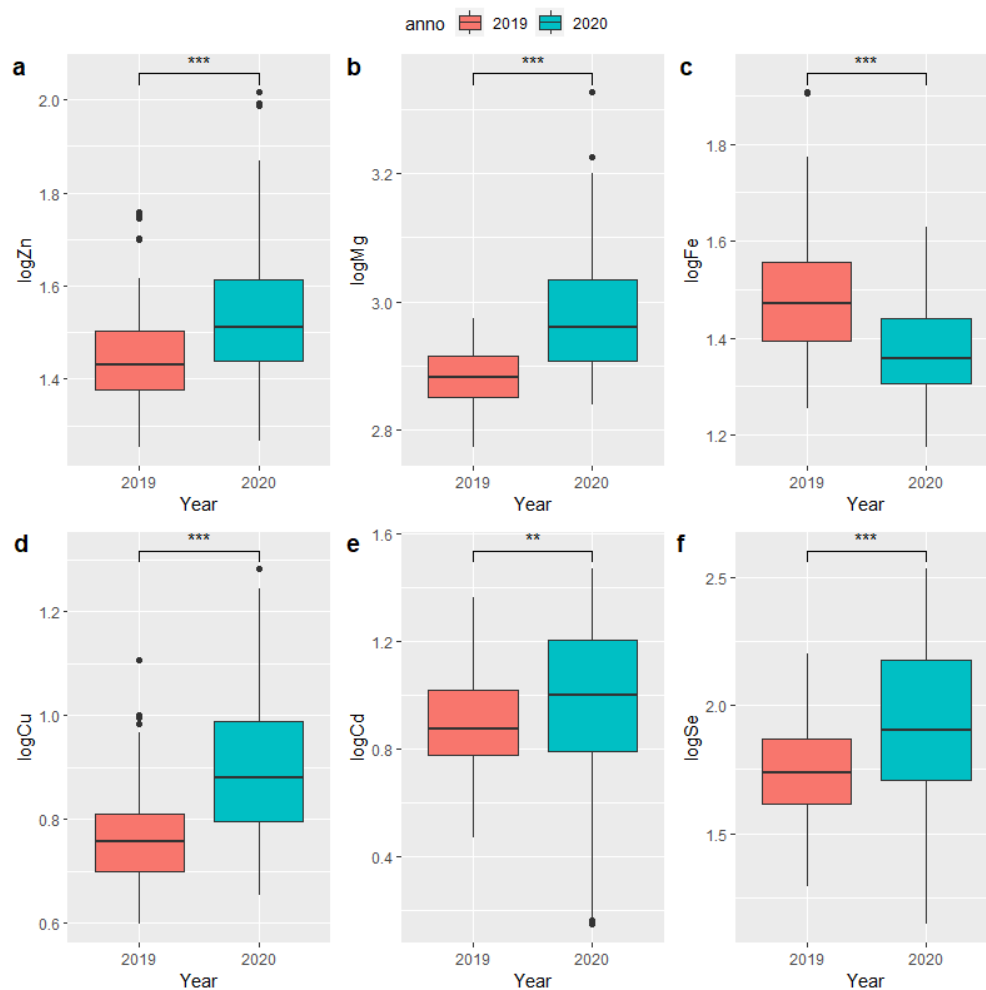


Figure S2 – Microelements content for year. a) zinc, b) magnesium, c) iron, d) copper, e) cadmium, f) selenium. Asterisk indicates significant differences between the years (Student t-test, $\alpha = 0.05$). ** = p-value < 0.01; *** = p-value < 0.001.

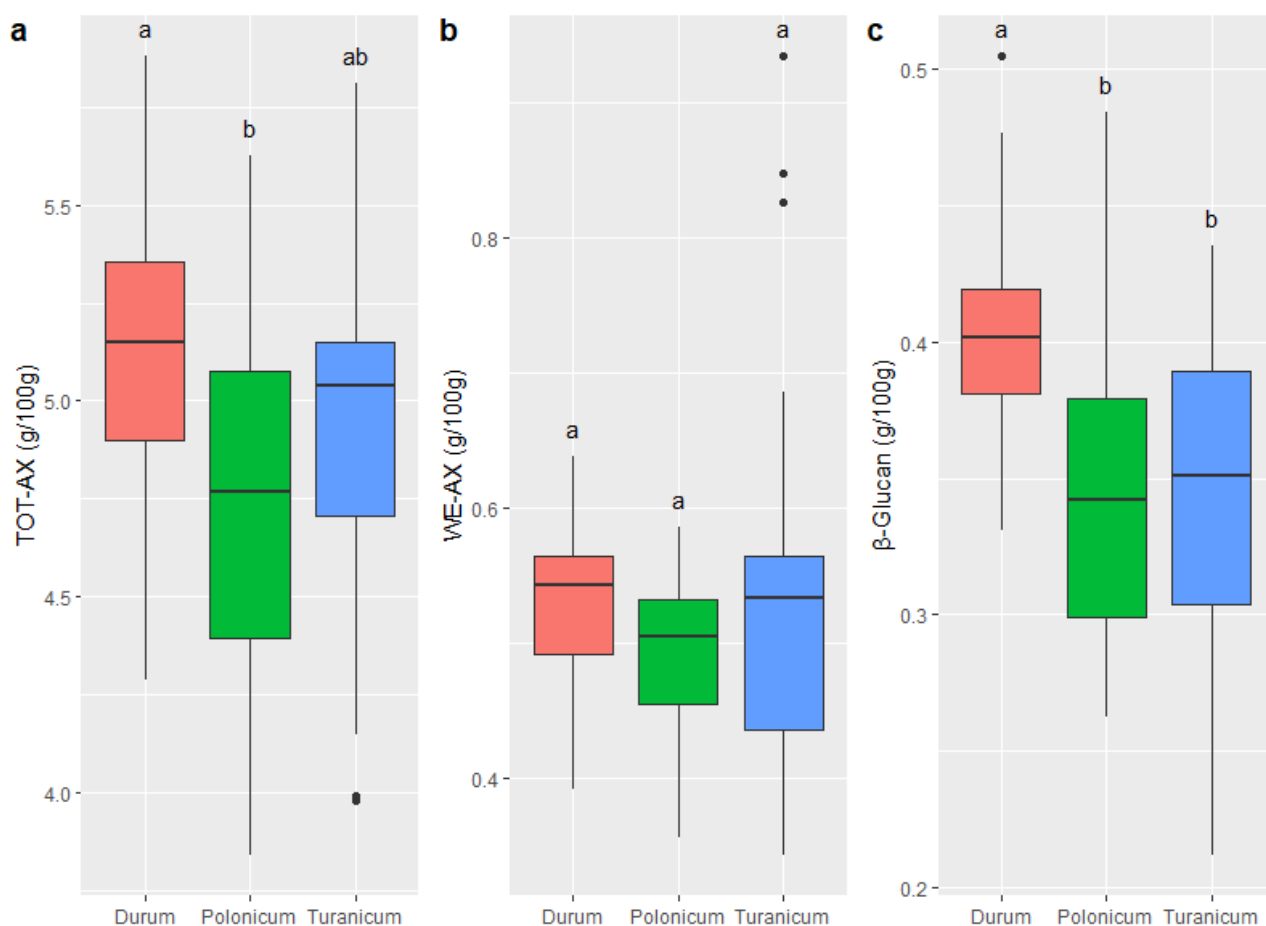


Figure S3 –Fiber content for subspecies a) total arabinoxylan, b) water-extractable arabinoxylan, c) β -glucan. Boxplots with different letters are significantly different (ANOVA with Tukey's HSD, $\alpha = 0.05$).

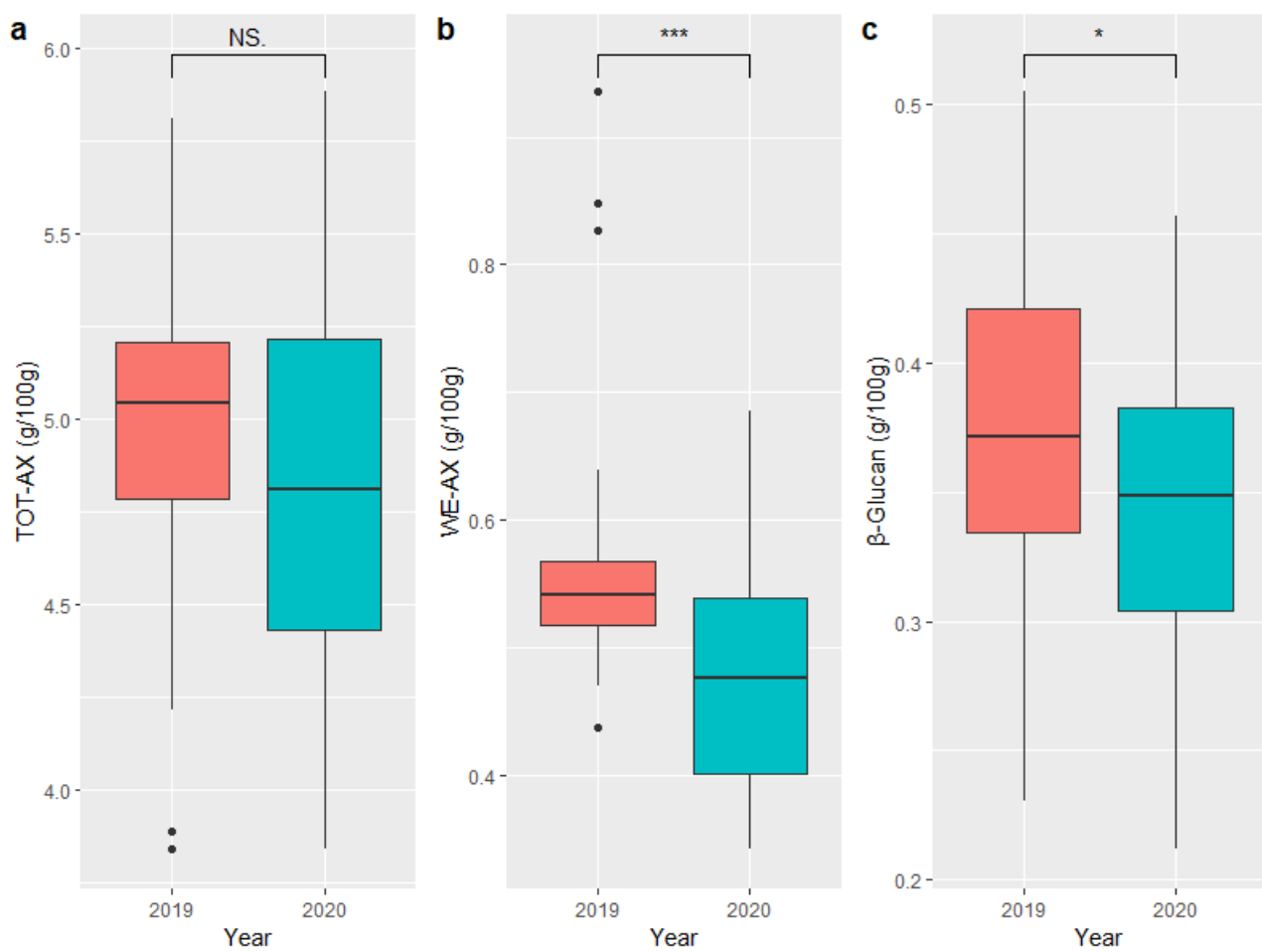


Figure S4 – Fiber content for year. a) total arabinoxylan, b) water-extractable arabinoxylan, c) β -glucan. Asterisk indicates significant differences between the years (Student t-test, $\alpha = 0.05$). * = p-value < 0.05; *** = p-value < 0.001; NS. = p-value > 0.05.