

Supplementary Material

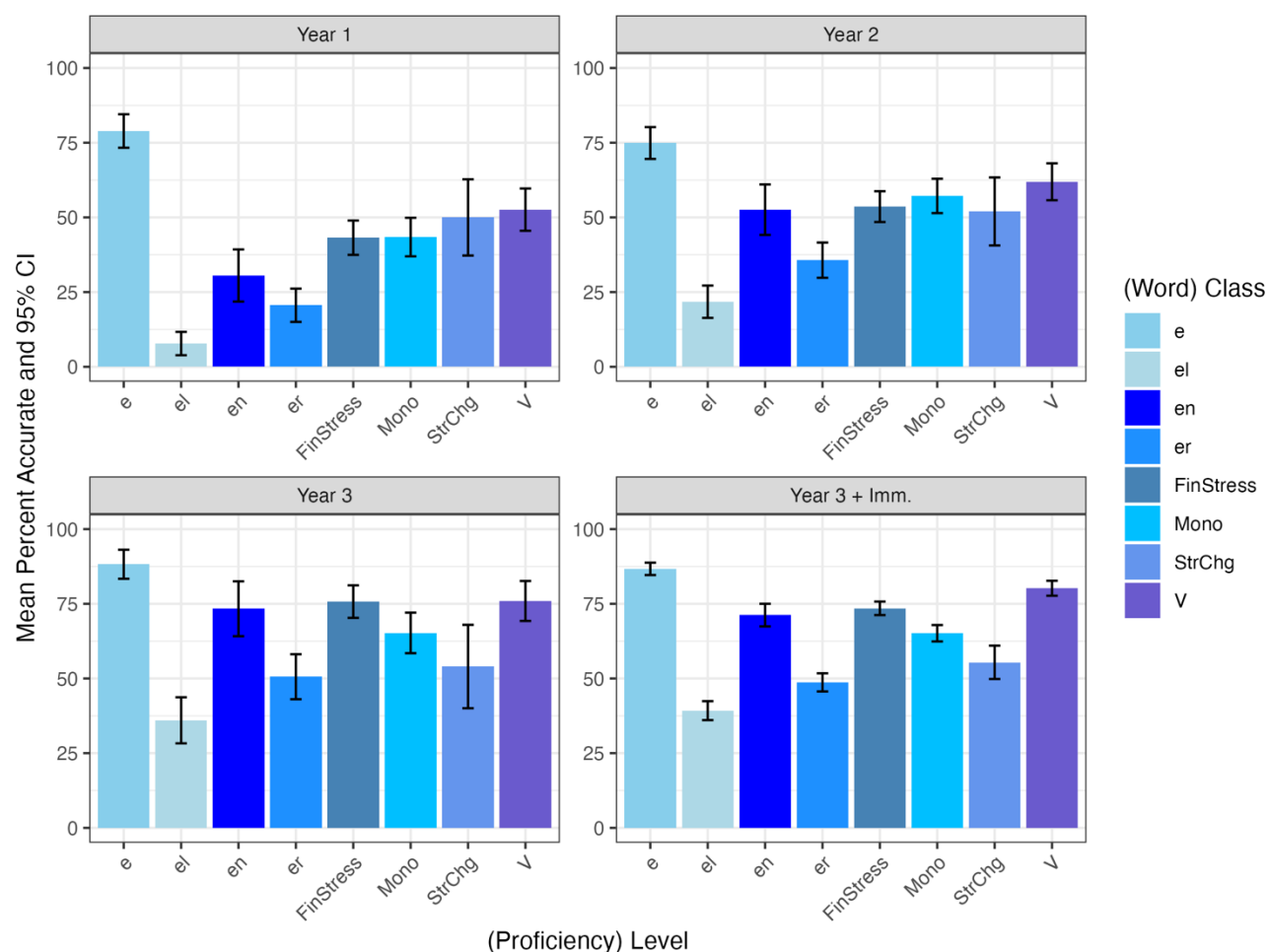
From Formalism to Intuition: Probing the Role of the Trochee in German Nominal Plural Forms in L1 and L2 German Speakers

Katharina S. Schuhmann*, Laura Catharine Smith

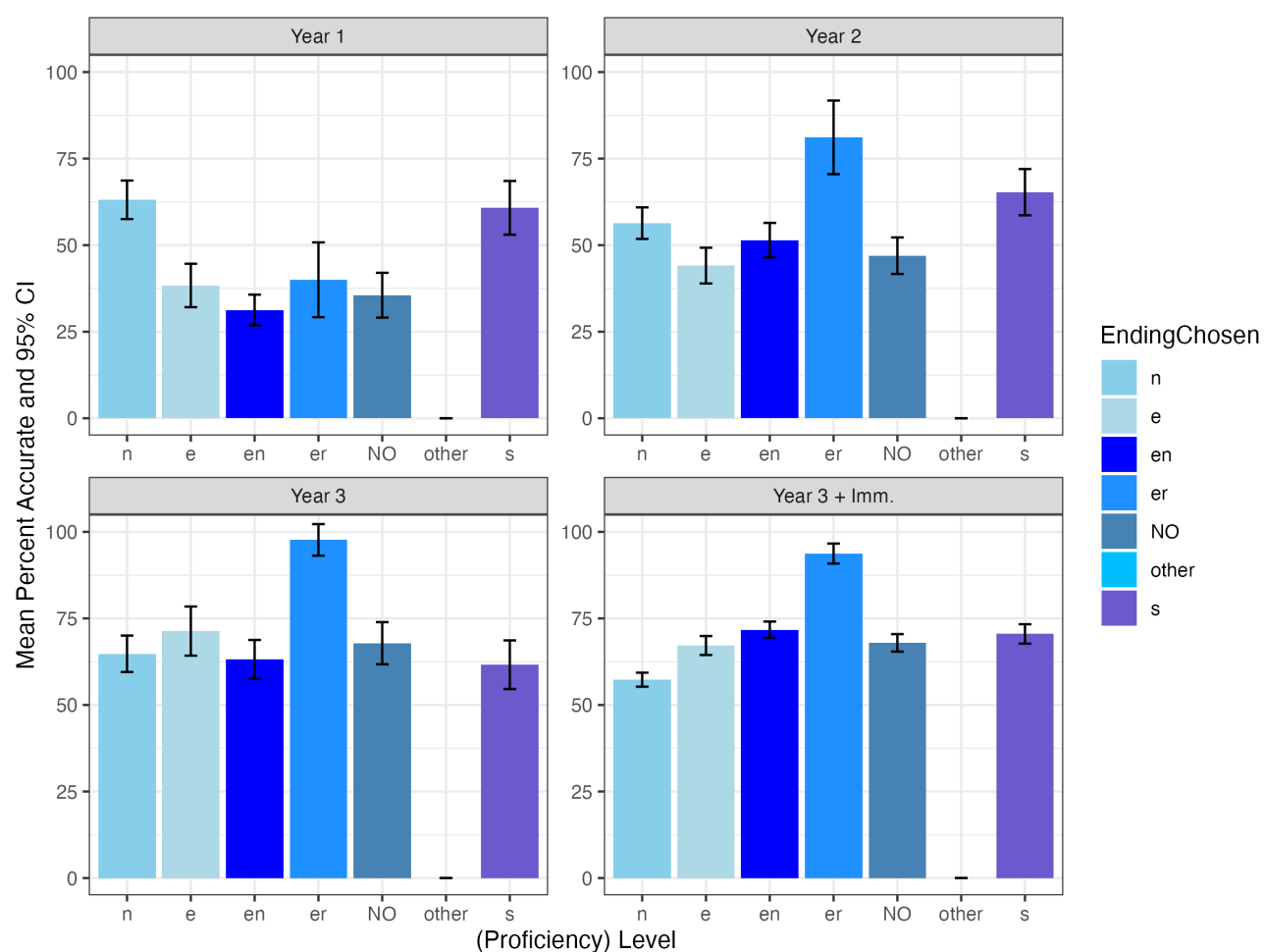
* Correspondence: Corresponding Author: Katharina.Schuhmann@uni-oldenburg.de

1 Supplementary Figures

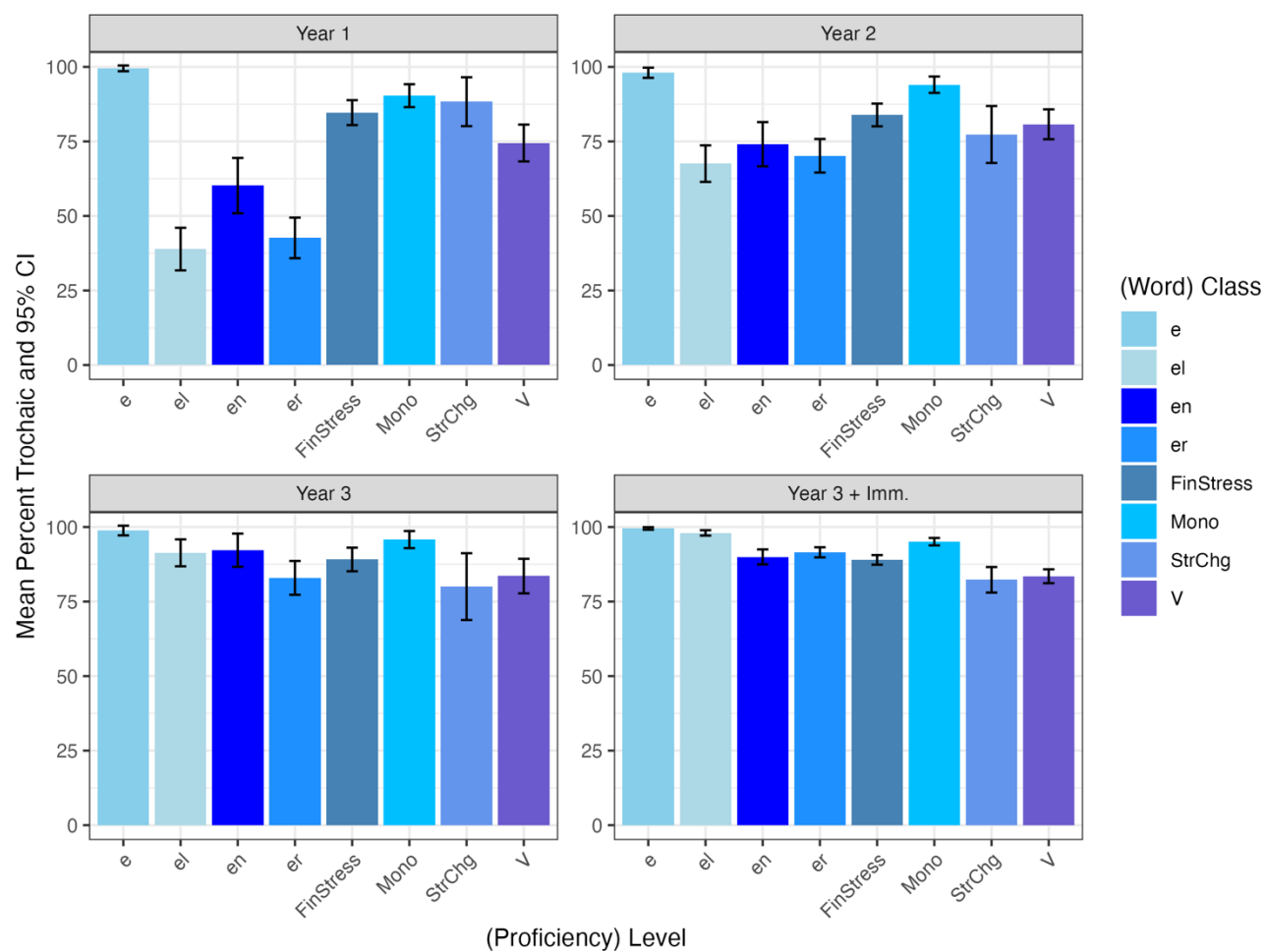
1.1 Supplementary Figures to 4.2 Results Task 2: real word plural elicitation task



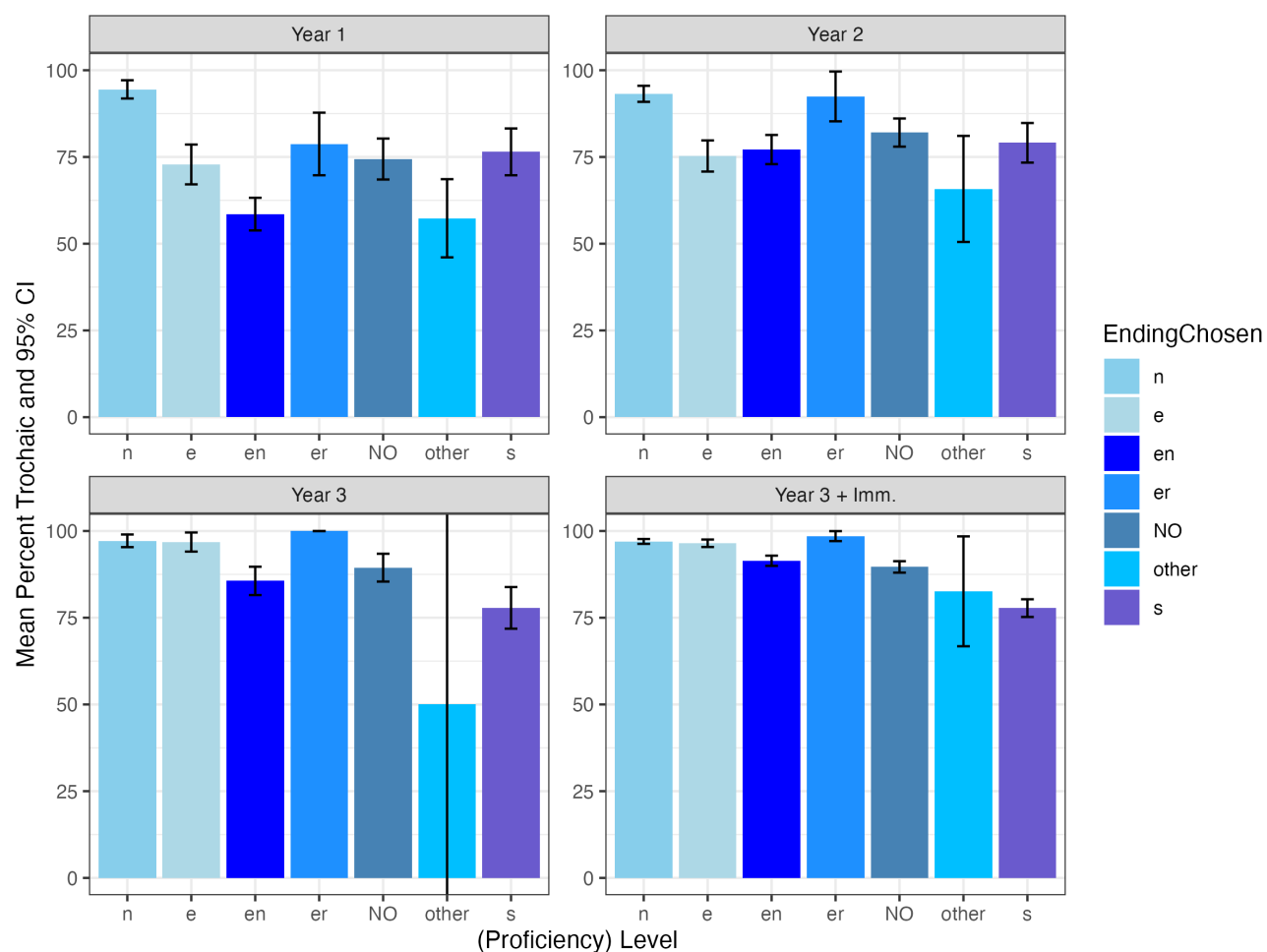
Supplementary Figure 1. Percent Accurate plural forms in the plural elicitation task with real words (Task 2) in L2 speakers, split by (proficiency) Level and (word) Class.



Supplementary Figure 2. Percent Accurate plural forms in the plural elicitation task with real words (Task 2) in L2 speakers, split by (proficiency) Level and EndingChosen (i.e., suffixes produced).

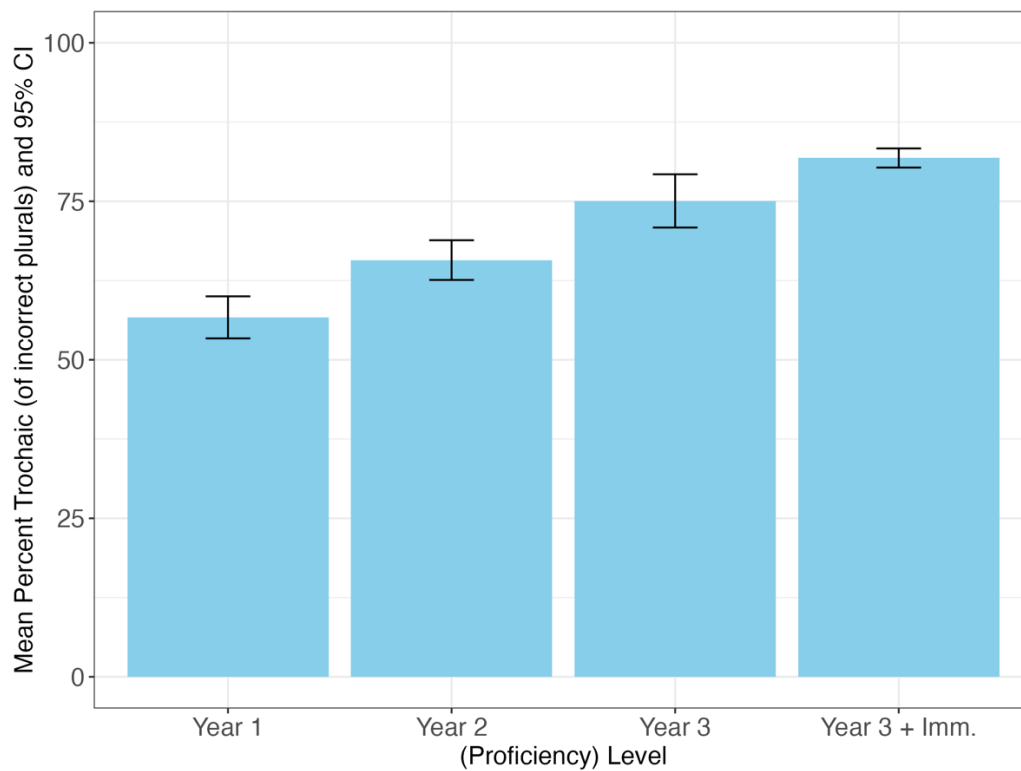


Supplementary Figure 3. Percent Trochaic plural forms in the plural elicitation task with real words (Task 2) in L2 speakers, split by (proficiency) Level and (word) Class.



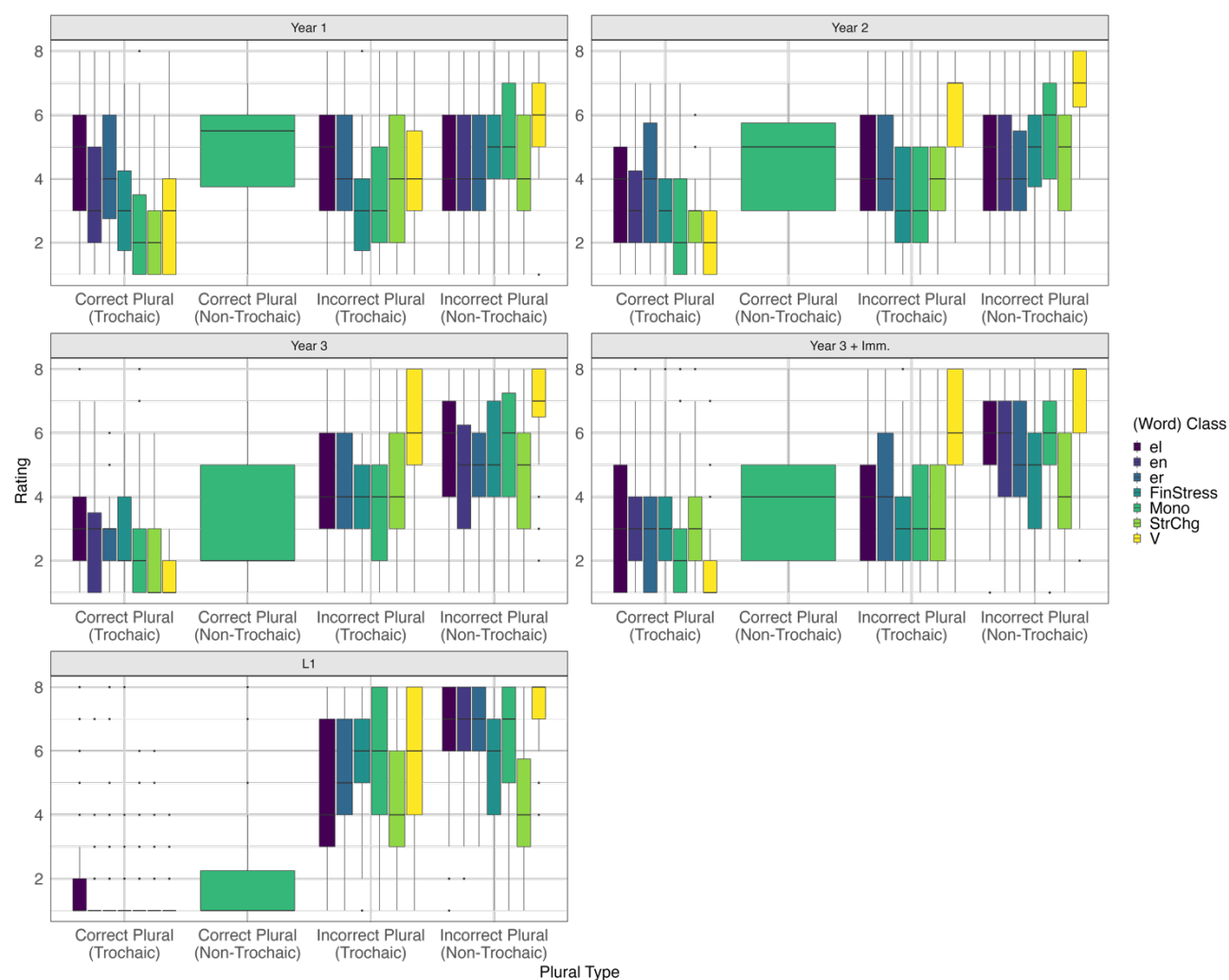
Supplementary Figure 4. Percent Trochaic plural forms in the plural elicitation task with real words (Task 2) in L2 speakers, split by (proficiency) Level and EndingChosen (i.e., suffixes produced).

1.2 Supplementary Figure to 4.2.4 Percent Trochaic of incorrect plurals



Supplementary Figure 5. Percent Trochaic plural forms of only the incorrect items in the plural elicitation task with real words (Task 2) in L2 speakers, split by (proficiency) Level.

1.3 Supplementary Figure to 4.3.2 Ratings by (word) Class and Ending



Supplementary Figure 6. L2 and L1 users' well-formedness ratings on the grammatical acceptability judgment task (GAJT, Task 3), split by (proficiency) Level, Plural Type, and (word) Class.

2 Supplementary Tables

2.1 Supplementary Table to 4.2.4 Percent Trochaic of incorrect plurals

2.1.1 Supplementary Table 1: Model summary for Percent Trochaic plural forms in the plural elicitation task with real words (incorrect plurals only) in L2 speakers (Task 2).

	Estimate	Std. error	z-value	p-value
(Intercept)	6.950	0.779	8.927	<.001
Level1: Y1 vs. Y2	0.284	0.290	0.979	.328
Level2: Y1+2 vs. Y3	1.128	0.322	3.506	<.001
Level3: Y1-3 vs. Y3+	1.178	0.216	5.454	<.001
Class: <i>-el</i> vs. <i>-e</i>	-4.821	0.855	-5.641	<.001
Class: <i>-en</i> vs. <i>-e</i>	-3.744	0.909	-4.118	<.001
Class: <i>-er</i> vs. <i>-e</i>	-4.829	0.846	-5.707	<.001
Class: FinStress vs. <i>-e</i>	-1.881	0.826	-2.278	.023
Class: Mono vs. <i>-e</i>	-1.021	0.859	-1.188	.235
Class: StrChg vs. <i>-e</i>	-2.267	1.043	-2.174	.030
Class: <i>-V</i> vs. <i>-e</i>	-2.960	0.864	-3.424	<.001
Ending: <i>-e</i> vs. <i>-n</i>	-2.469	0.226	-10.931	<.001
Ending: <i>-en</i> vs. <i>-n</i>	-3.315	0.209	-15.884	<.001
Ending: <i>-er</i> vs. <i>-n</i>	-2.759	0.400	-6.906	<.001
Ending: NO vs. <i>-n</i>	-2.864	0.220	-12.996	<.001
Ending: other vs. <i>-n</i>	-2.199	0.316	-6.960	<.001
Ending: <i>-s</i> vs. <i>-n</i>	-2.548	0.233	-10.912	<.001