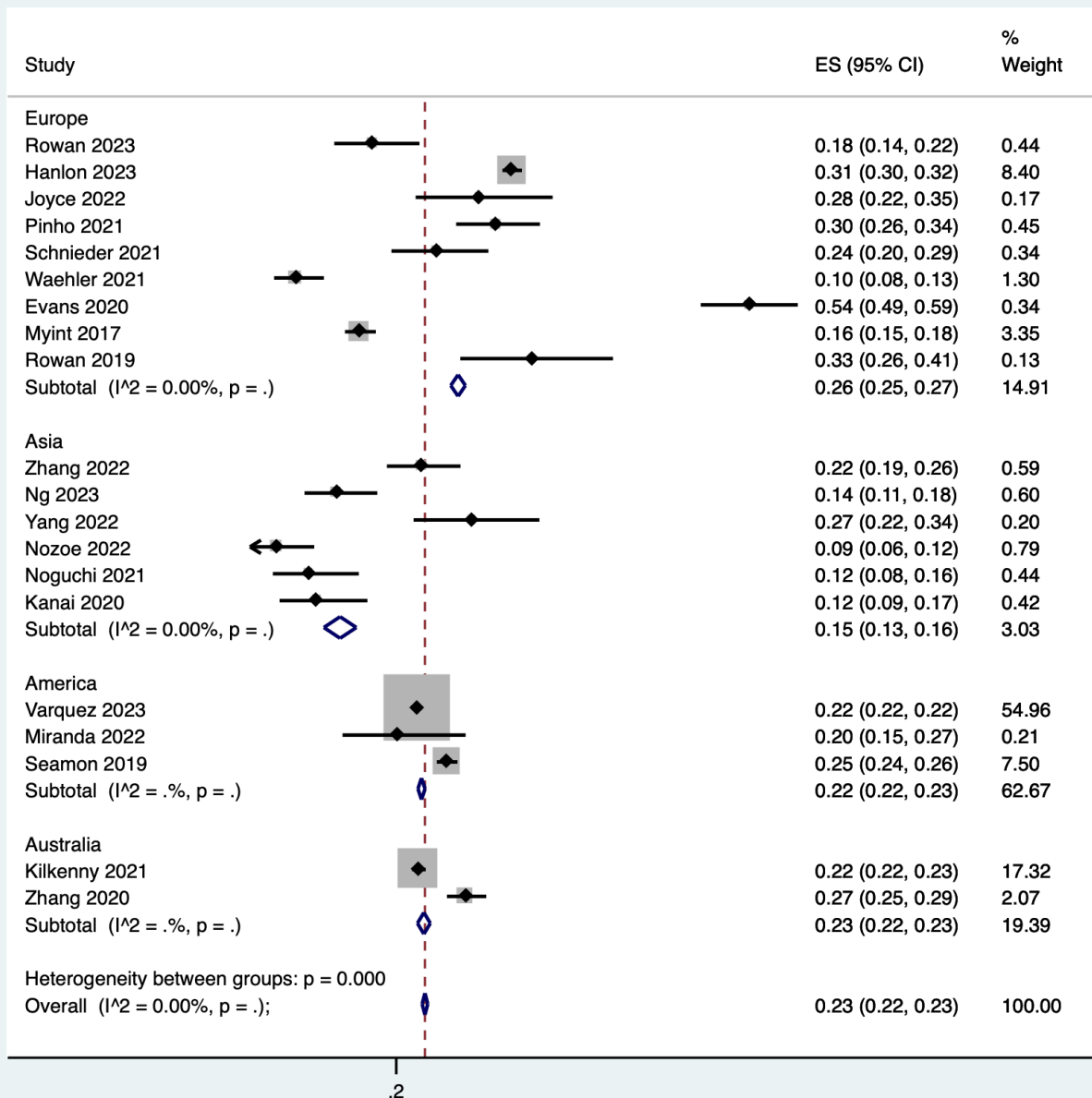


Supplementary file 1: Search strategy

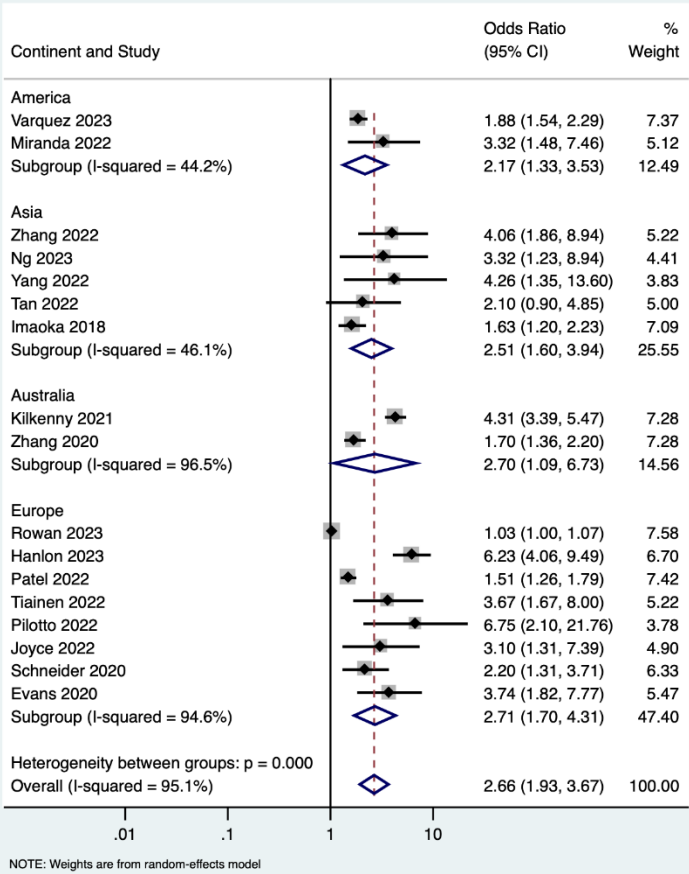
SEARCH STRATEGY: PUBMED	
S.NO	SEARCH TERMS
#1	<p>Search: ((frailty) AND (stroke)) AND (mortality)</p> <p>("frailty"[MeSH Terms] OR "frailty"[All Fields] OR "frailties"[All Fields]) AND ("stroke"[MeSH Terms] OR "stroke"[All Fields] OR "strokes"[All Fields] OR "stroke s"[All Fields]) AND ("mortality"[MeSH Terms] OR "mortality"[All Fields] OR "mortalities"[All Fields] OR "mortality"[MeSH Subheading])</p> <p>Translations</p> <p>frailty: "frailty"[MeSH Terms] OR "frailty"[All Fields] OR "frailties"[All Fields]</p> <p>stroke: "stroke"[MeSH Terms] OR "stroke"[All Fields] OR "strokes"[All Fields] OR "stroke's"[All Fields]</p> <p>mortality: "mortality"[MeSH Terms] OR "mortality"[All Fields] OR "mortalities"[All Fields] OR "mortality"[Subheading]</p>
#2	<p>Search: ((frailty) AND (stroke)) AND (poor functional outcome)</p> <p>("frailty"[MeSH Terms] OR "frailty"[All Fields] OR "frailties"[All Fields]) AND ("stroke"[MeSH Terms] OR "stroke"[All Fields] OR "strokes"[All Fields] OR "stroke s"[All Fields]) AND ((("poverty"[MeSH Terms] OR "poverty"[All Fields] OR "poor"[All Fields]) AND ("functional"[All Fields] OR "functional s"[All Fields] OR "functionalities"[All Fields] OR "functionality"[All Fields] OR "functionalization"[All Fields] OR "functionalizations"[All Fields] OR "functionalize"[All Fields] OR "functionalized"[All Fields] OR "functionalizes"[All Fields] OR "functionalizing"[All Fields] OR "functionally"[All Fields] OR "functionals"[All Fields] OR "functioned"[All Fields] OR "functioning"[All Fields] OR "functionings"[All Fields] OR "functions"[All Fields] OR "physiology"[MeSH Subheading] OR "physiology"[All Fields] OR "function"[All Fields] OR "physiology"[MeSH Terms]) AND ("outcome"[All Fields] OR "outcomes"[All Fields]))</p> <p>Translations</p> <p>frailty: "frailty"[MeSH Terms] OR "frailty"[All Fields] OR "frailties"[All Fields]</p> <p>stroke: "stroke"[MeSH Terms] OR "stroke"[All Fields] OR "strokes"[All Fields] OR "stroke's"[All Fields]</p> <p>poor: "poverty"[MeSH Terms] OR "poverty"[All Fields] OR "poor"[All Fields]</p> <p>functional: "functional"[All Fields] OR "functional's"[All Fields] OR "functionalities"[All Fields] OR "functionality"[All Fields] OR "functionalization"[All Fields] OR "functionalizations"[All Fields] OR "functionalize"[All Fields] OR "functionalized"[All Fields] OR "functionalizes"[All Fields] OR "functionalizing"[All Fields] OR "functionally"[All Fields] OR "functionals"[All Fields] OR "functioned"[All Fields] OR "functioning"[All Fields] OR "functionings"[All Fields] OR "functions"[All Fields] OR "physiology"[Subheading] OR "physiology"[All Fields] OR "function"[All Fields] OR "physiology"[MeSH Terms]</p> <p>outcome: "outcome"[All Fields] OR "outcomes"[All Fields]</p>
#1 OR #2	<p>Search: ((frailty) AND (stroke)) AND ((poor functional outcome) OR (Mortality))</p> <p>("frailty"[MeSH Terms] OR "frailty"[All Fields] OR "frailties"[All Fields]) AND ("stroke"[MeSH Terms] OR "stroke"[All Fields] OR "strokes"[All Fields] OR "stroke s"[All Fields]) AND (((("poverty"[MeSH Terms] OR "poverty"[All Fields] OR "poor"[All Fields]) AND ("functional"[All Fields] OR "functional s"[All Fields] OR "functionalities"[All Fields] OR "functionality"[All Fields] OR "functionalization"[All Fields] OR "functionalizations"[All Fields] OR "functionalize"[All Fields] OR "functionalized"[All Fields] OR "functionalizes"[All Fields] OR "functionalizing"[All Fields] OR "functionally"[All Fields] OR "functionals"[All Fields] OR "functioned"[All Fields] OR "functioning"[All Fields] OR "functionings"[All Fields] OR "functions"[All Fields] OR "physiology"[MeSH Subheading] OR "physiology"[All Fields] OR "function"[All Fields] OR "physiology"[MeSH Terms]) AND ("outcome"[All Fields] OR</p>

	"outcomes"[All Fields])) OR ("mortality"[MeSH Terms] OR "mortality"[All Fields] OR "mortalities"[All Fields] OR "mortality"[MeSH Subheading])) Translations frailty: "frailty"[MeSH Terms] OR "frailty"[All Fields] OR "frailties"[All Fields] stroke: "stroke"[MeSH Terms] OR "stroke"[All Fields] OR "strokes"[All Fields] OR "stroke's"[All Fields] poor: "poverty"[MeSH Terms] OR "poverty"[All Fields] OR "poor"[All Fields] functional: "functional"[All Fields] OR "functional's"[All Fields] OR "functionalities"[All Fields] OR "functionality"[All Fields] OR "functionalization"[All Fields] OR "functionalizations"[All Fields] OR "functionalize"[All Fields] OR "functionalized"[All Fields] OR "functionalizes"[All Fields] OR "functionalizing"[All Fields] OR "functionally"[All Fields] OR "functionals"[All Fields] OR "functioned"[All Fields] OR "functioning"[All Fields] OR "functionings"[All Fields] OR "functions"[All Fields] OR "physiology"[Subheading] OR "physiology"[All Fields] OR "function"[All Fields] OR "physiology"[MeSH Terms] outcome: "outcome"[All Fields] OR "outcomes"[All Fields] Mortality: "mortality"[MeSH Terms] OR "mortality"[All Fields] OR "mortalities"[All Fields] OR "mortality"[Subheading]
SEARCH STRATEGY: SCIENCE DIRECT	
#1	((frailty) AND (stroke)) AND ((poor functional outcome) AND (Mortality))
SEARCH STRATEGY: GOOGLE SCHOLAR	
#1	Frailty; Stroke; Transient ischemic attack; Poor functional outcome; Mortality; Cohort studies; Case-control studies; Cross-sectional studies; Observational studies

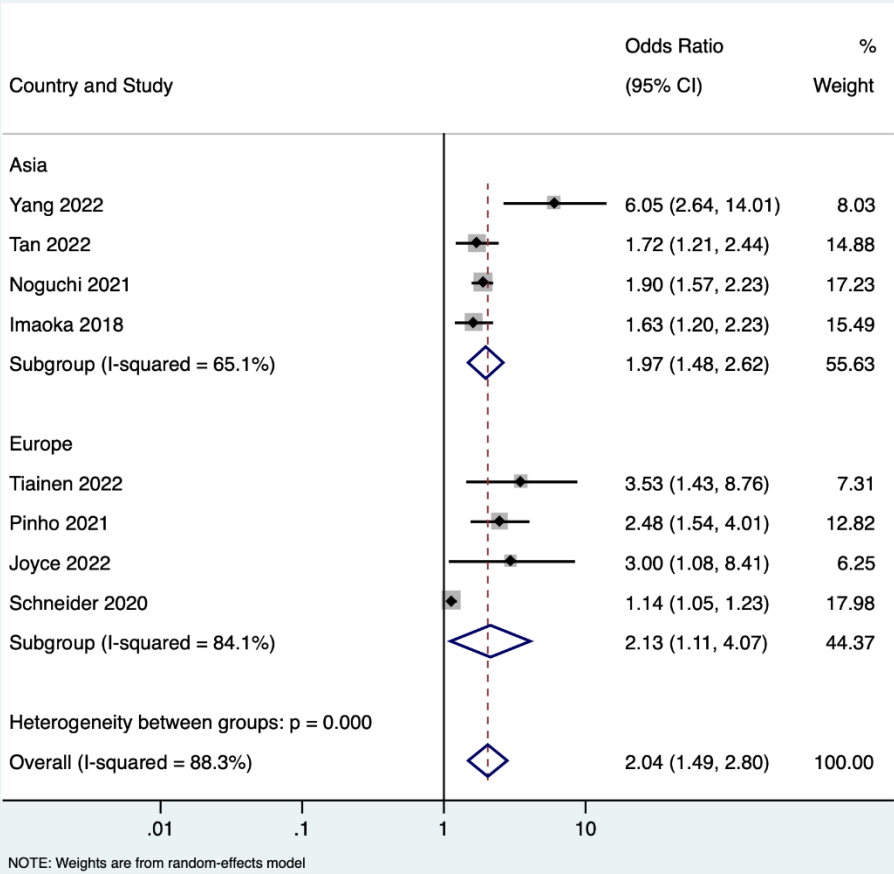
Supplementary file 2: Forest plot showing the prevalence of frailty among stroke patients grouped by continent



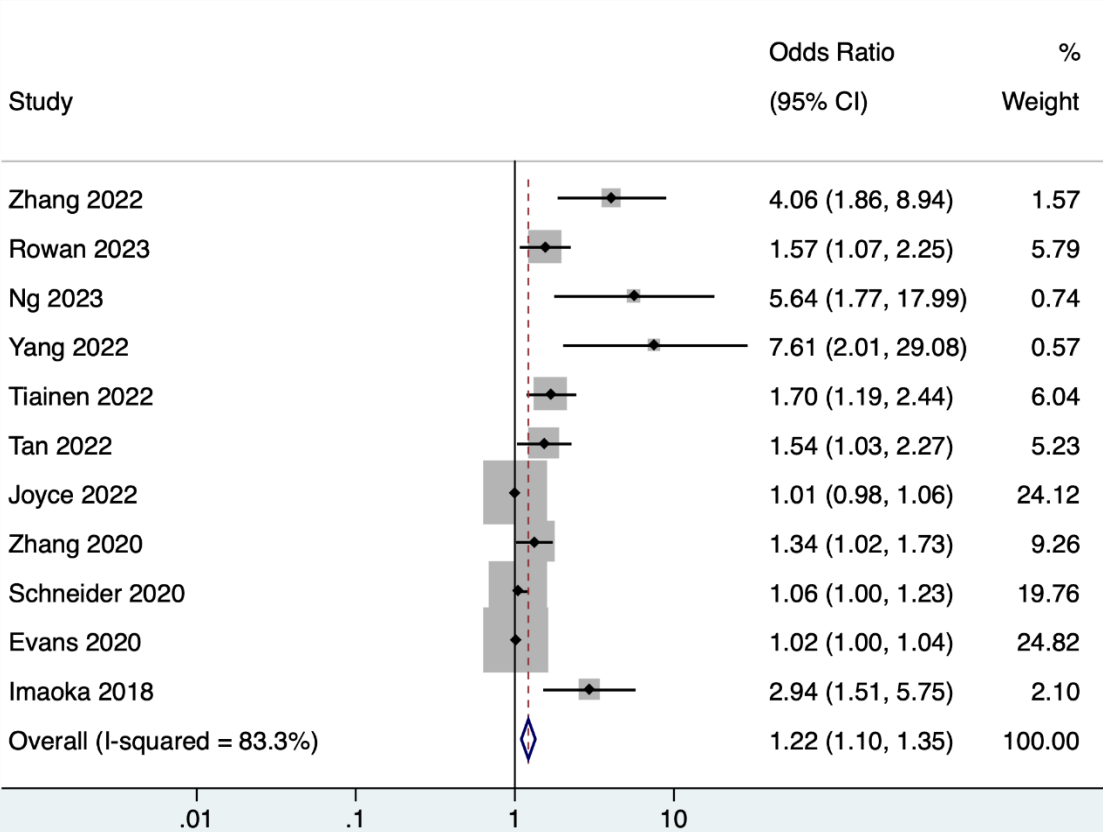
Supplementary file 3: Forest plot showing the association between frailty and mortality among stroke patients grouped by continent (unadjusted)



Supplementary file 4: Forest plot showing the association between frailty and poor functional outcome among stroke patients grouped by continent (unadjusted)

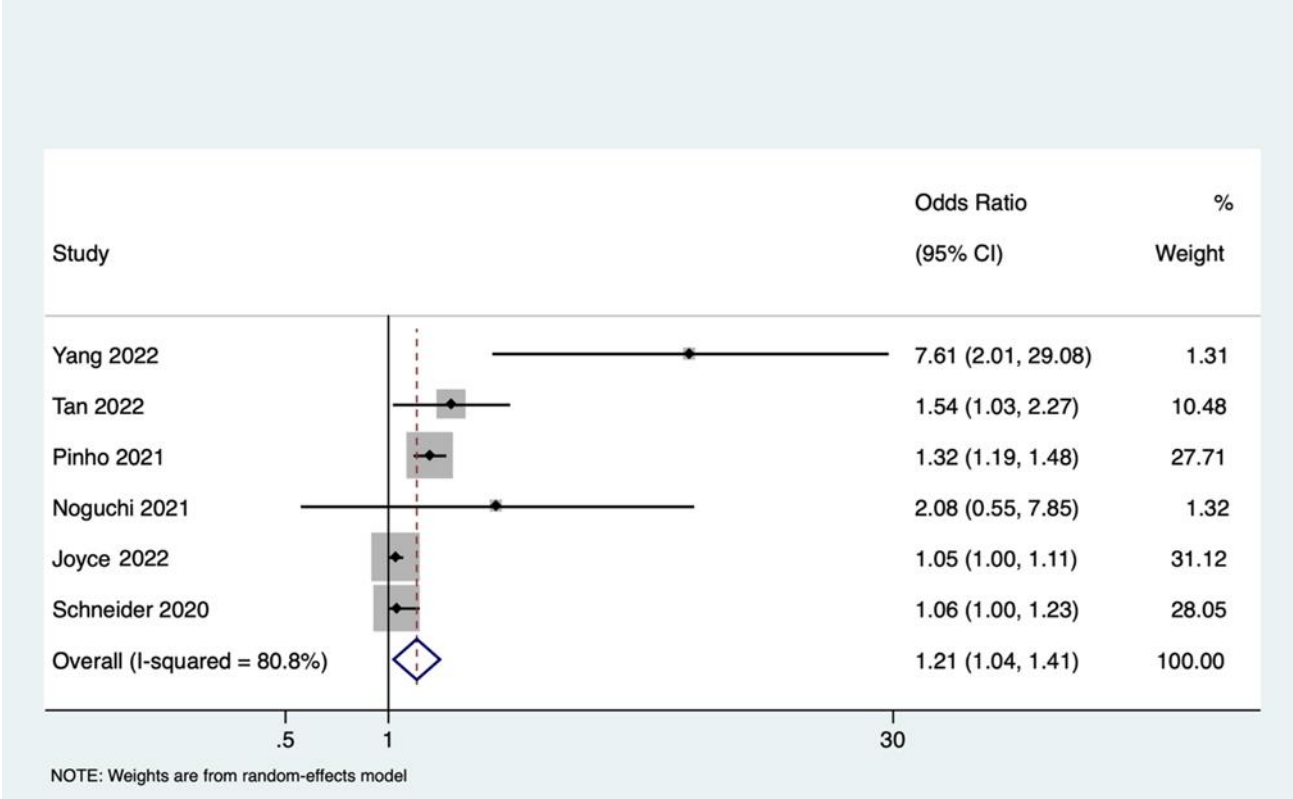


Supplementary file 5: Forest plot showing the association between frailty and mortality among stroke patients grouped by continent (adjusted)

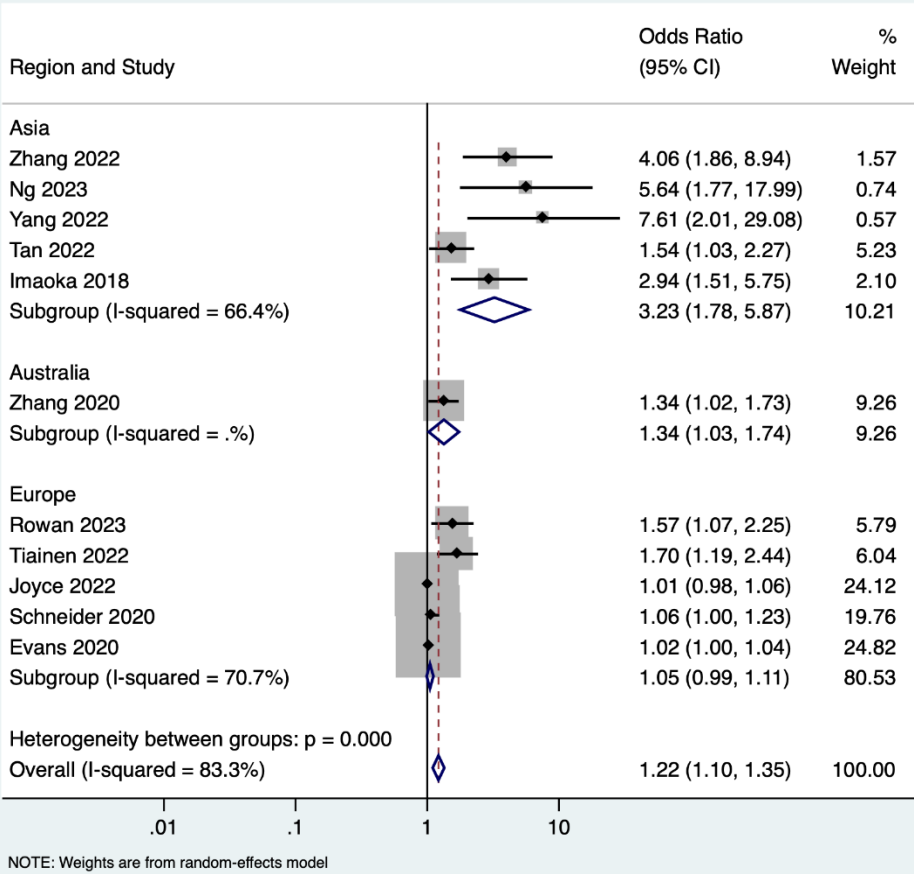


NOTE: Weights are from random-effects model

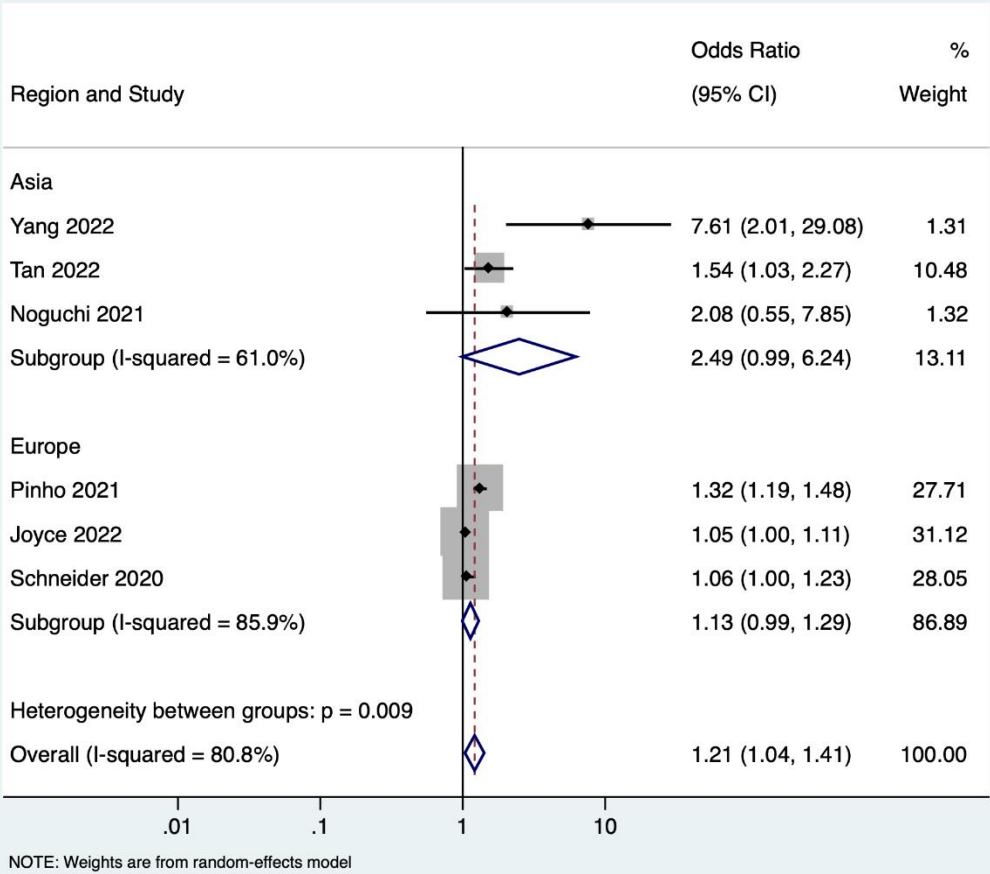
Supplementary file 6: Forest plot showing the association between frailty and poor functional outcome among stroke patients grouped by continent (adjusted)



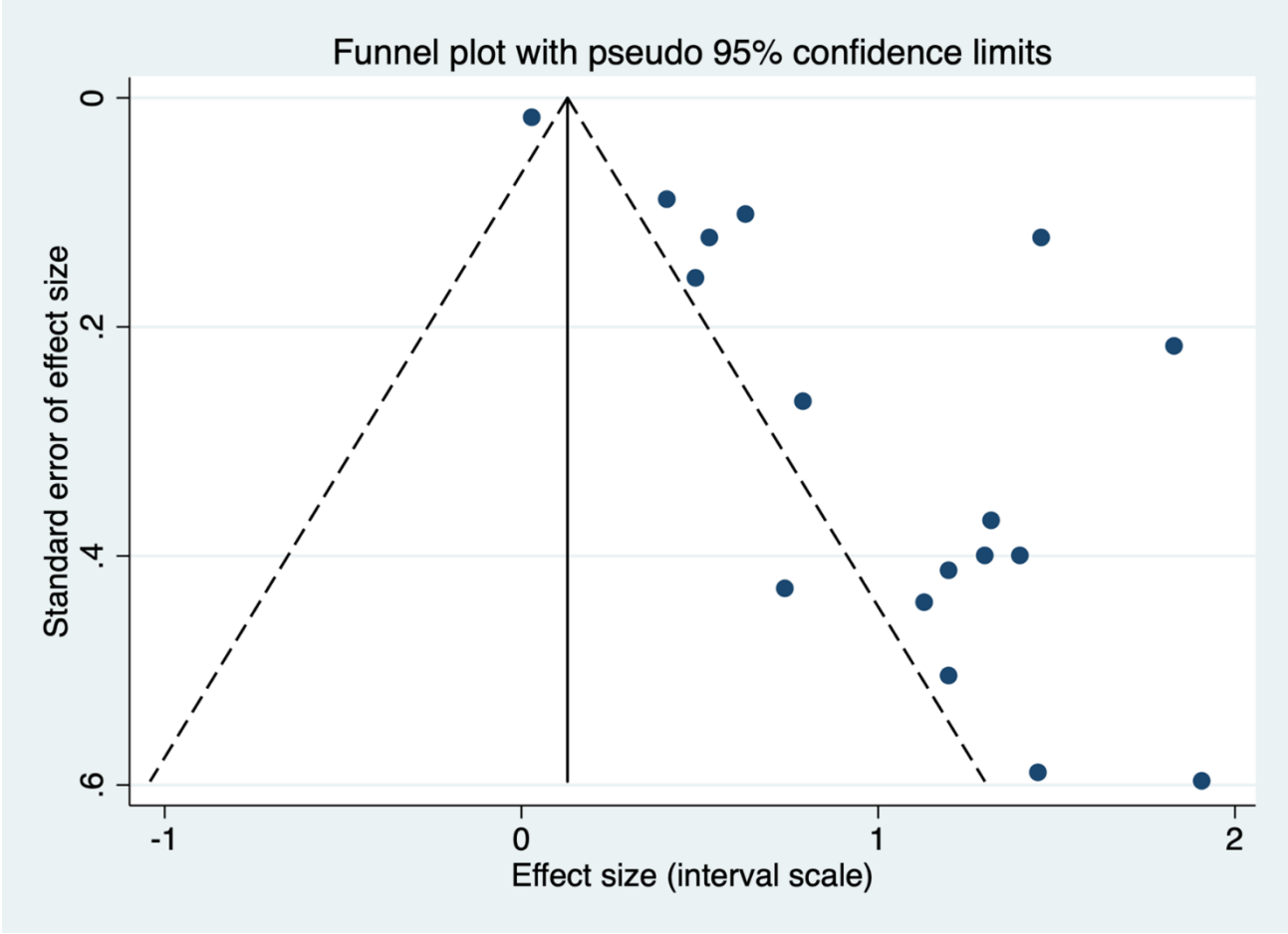
Supplementary file 7: Forest plot showing the association between frailty and mortality among stroke patients grouped by continent (adjusted)



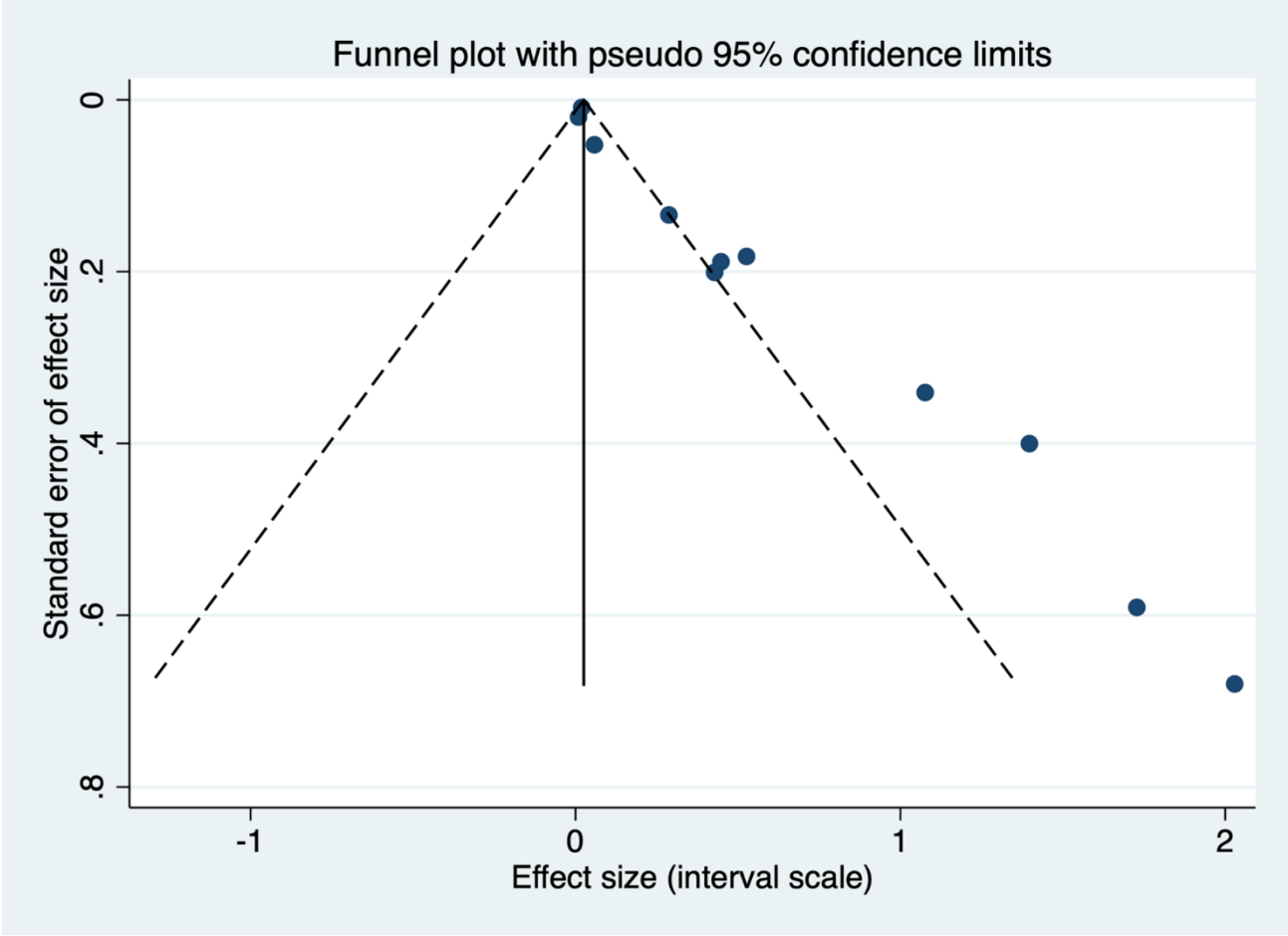
Supplementary file 8: Forest plot showing the association between frailty and poor functional outcome among stroke patients grouped by continent (adjusted)



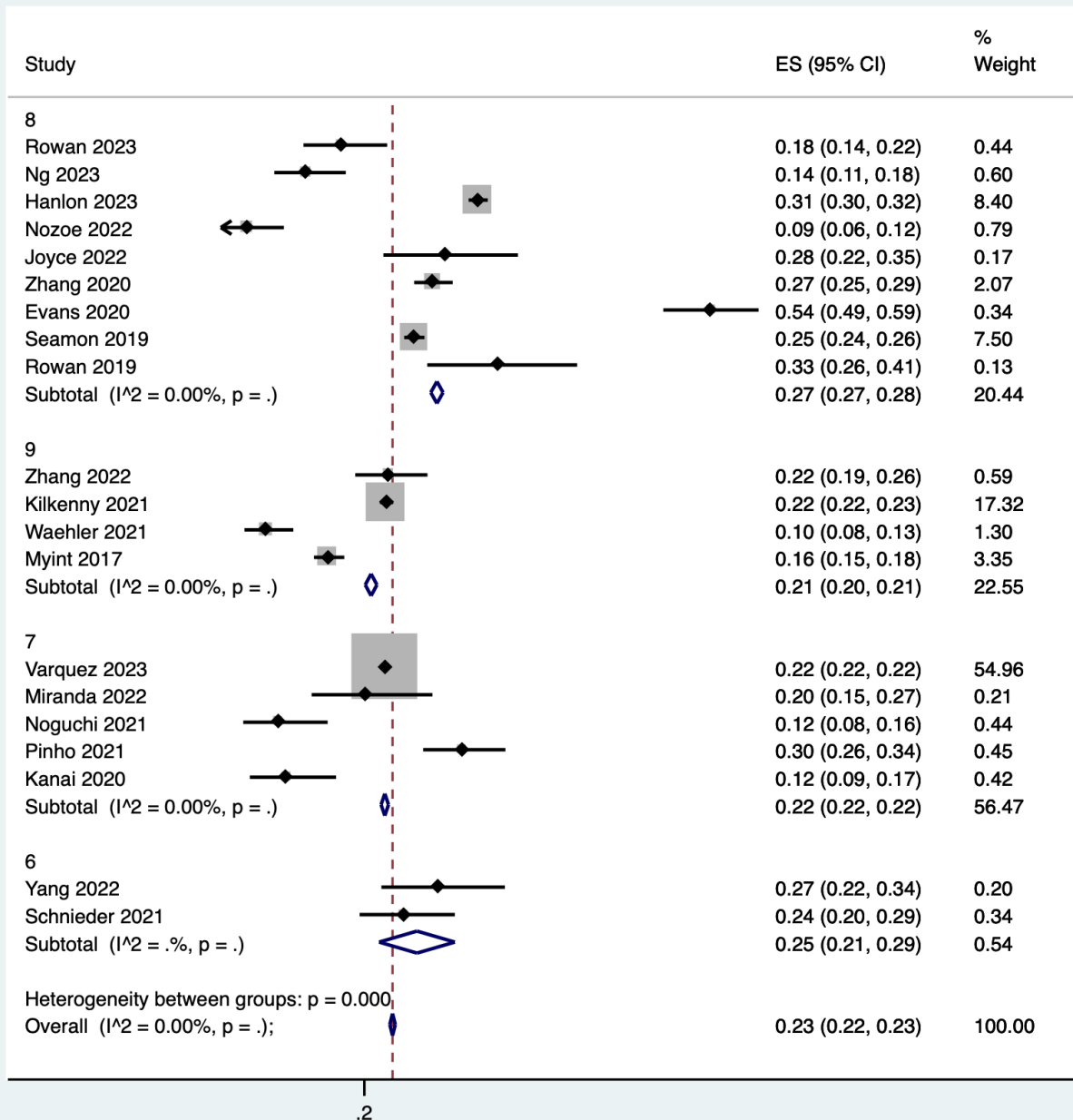
Supplementary file 9: Funnel plot showing the publication bias for studies reporting mortality (unadjusted)



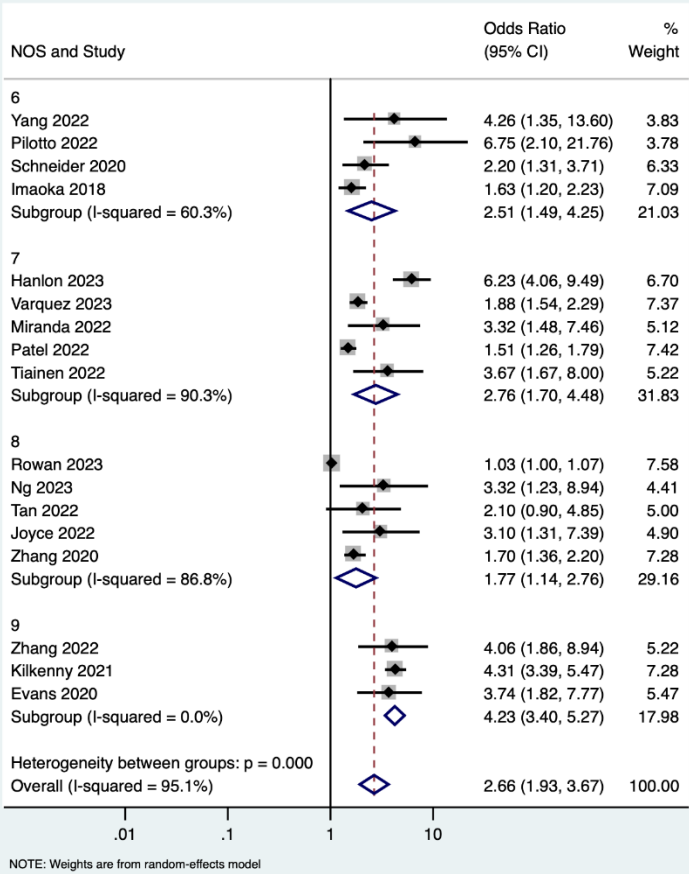
Supplementary file 10: Funnel plot showing the publication bias for studies reporting mortality (adjusted)



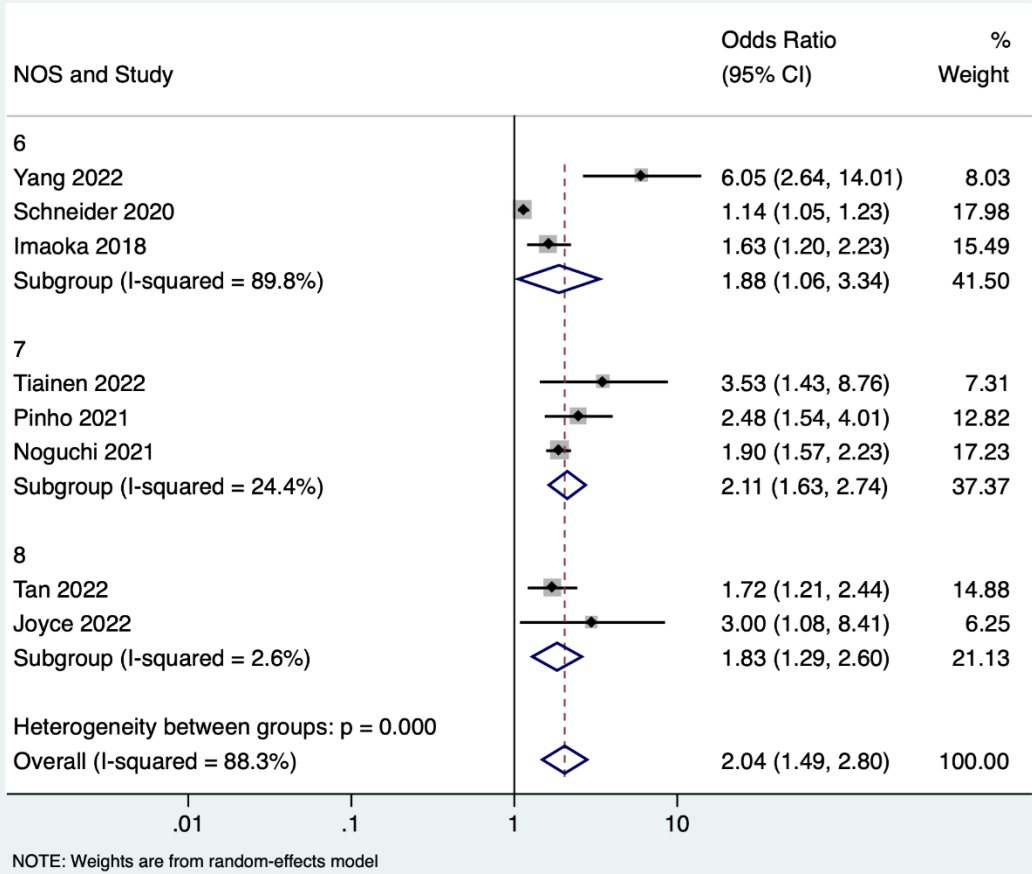
Supplementary file 11: Forest plot showing the prevalence of frailty among stroke patients sorted by quality of studies



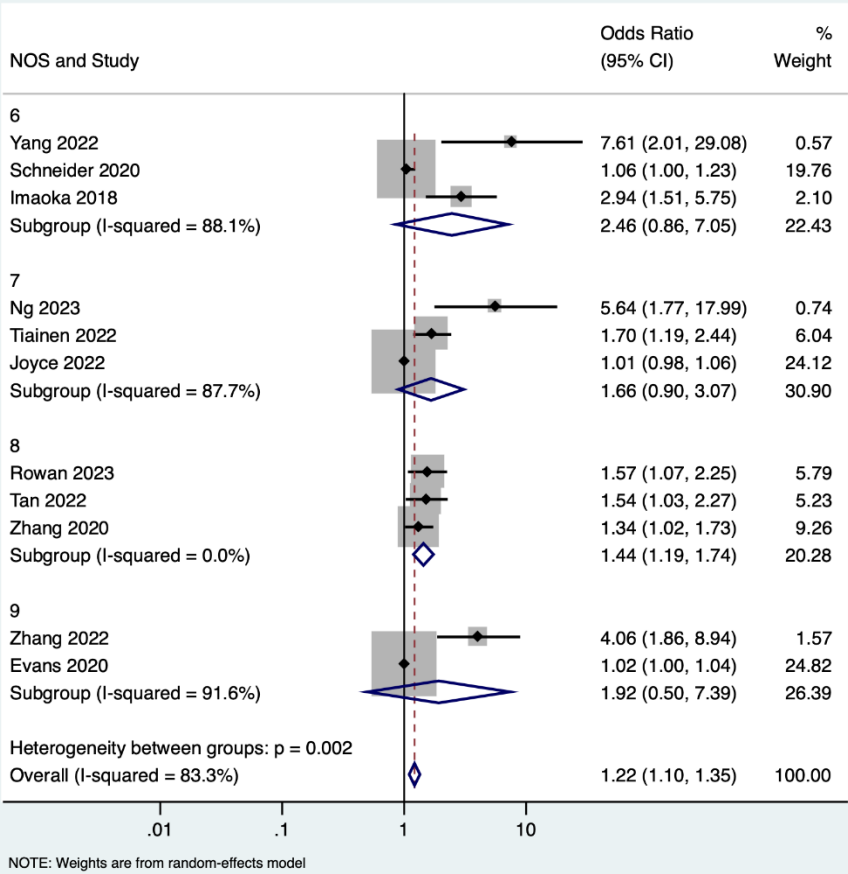
Supplementary file 12: Forest plot showing the association between frailty and mortality among stroke patients sorted by quality of studies [unadjusted]



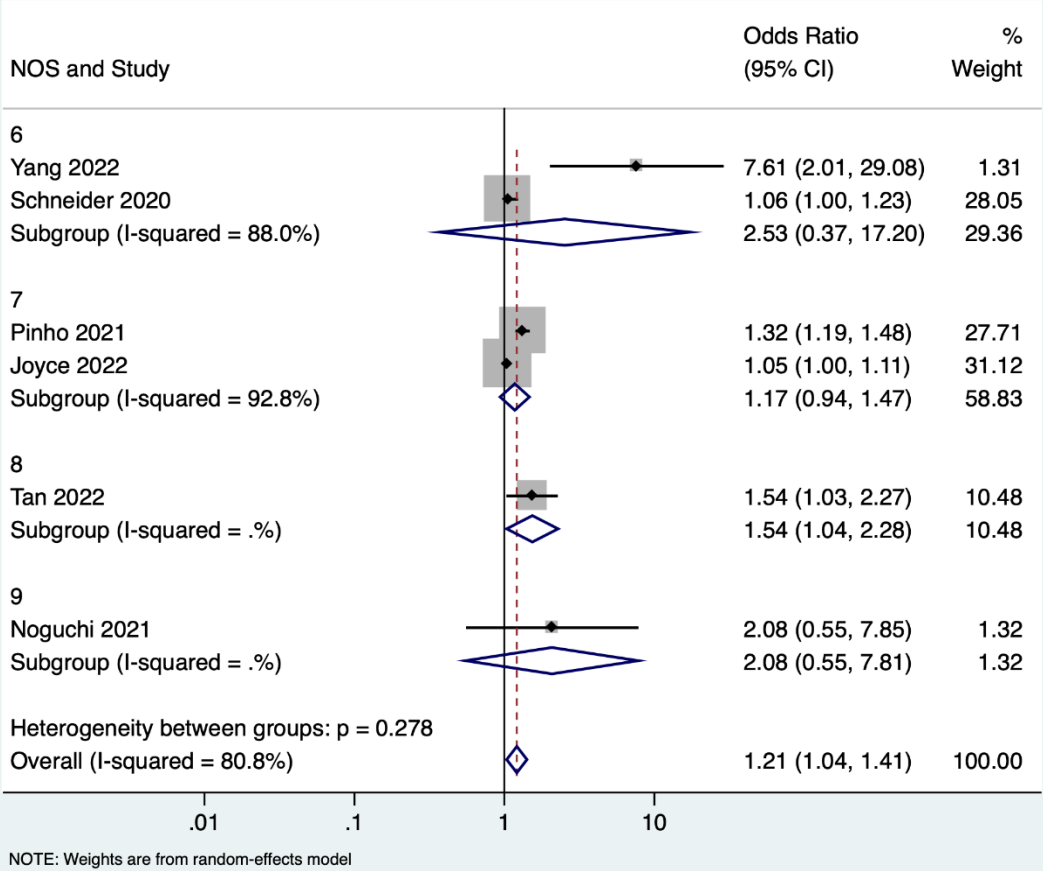
Supplementary file 13: Forest plot showing the association between frailty and poor functional outcome among stroke patients sorted by quality of studies [unadjusted]



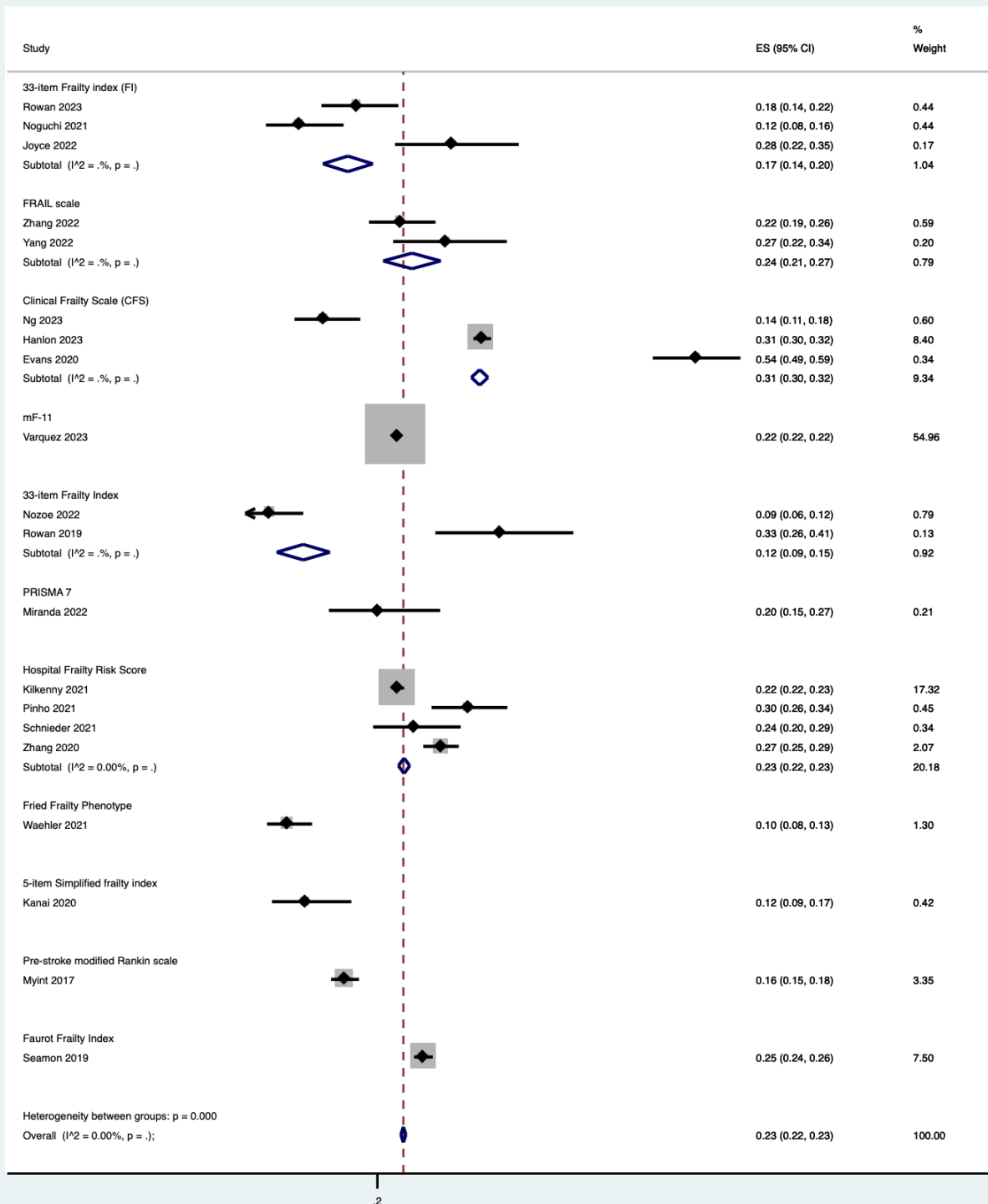
Supplementary file 14: Forest plot showing the association between frailty and mortality among stroke patients sorted by quality of studies [adjusted]



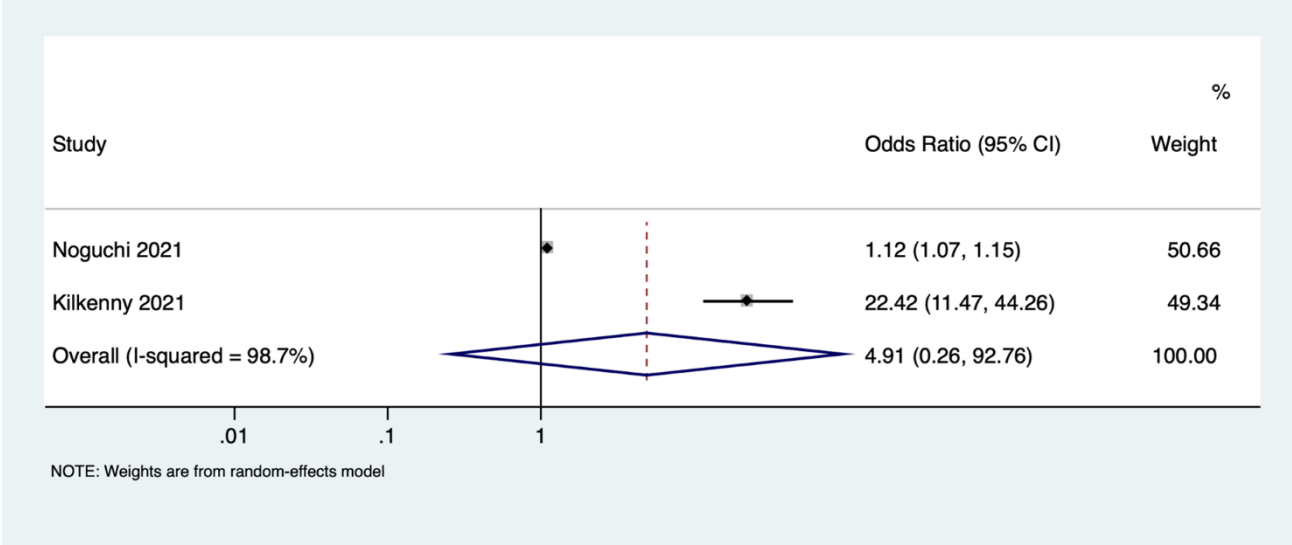
Supplementary file 15: Forest plot showing the association between frailty and poor functional outcome among stroke patients sorted by quality of studies [adjusted]



Supplementary file 16: Forest plot showing the prevalence of frailty among stroke patients grouped by tool used



Supplementary file 17: Forest plot showing the comparison of hospital stay across frail and non-frail stroke cases



Supplementary file 18: Subgroup analysis based on the study design of the included studies for unadjusted mortality estimates

