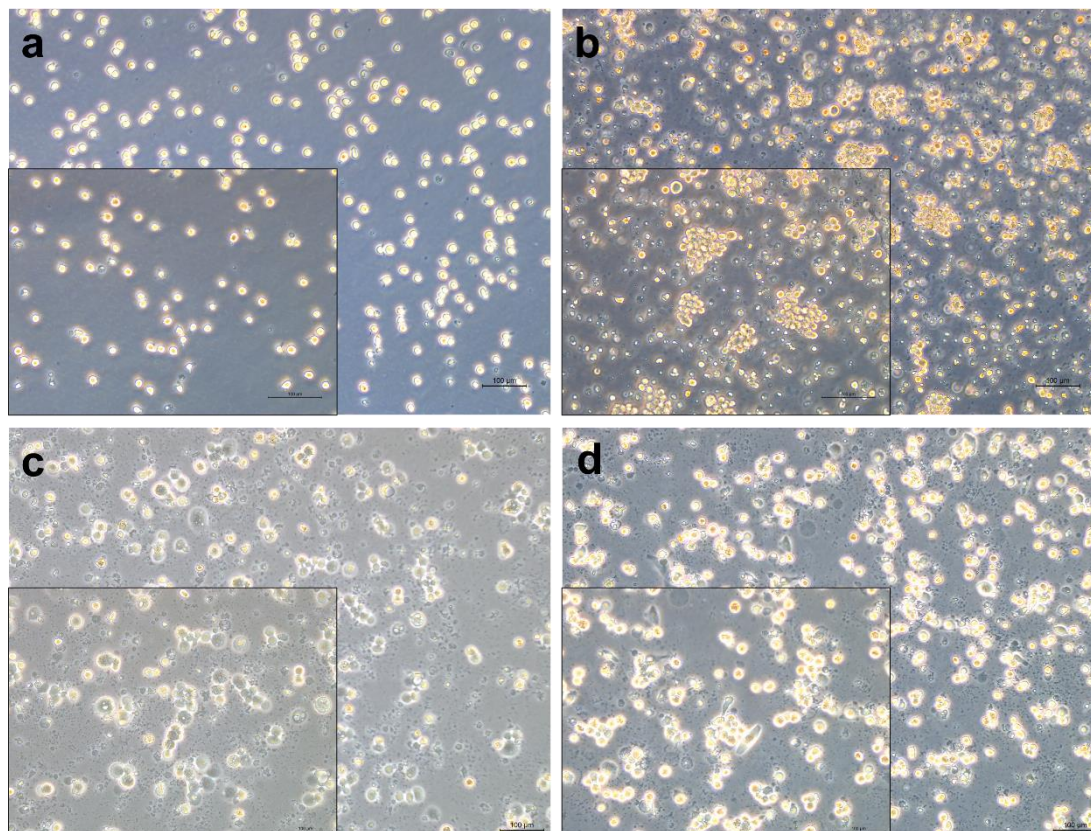
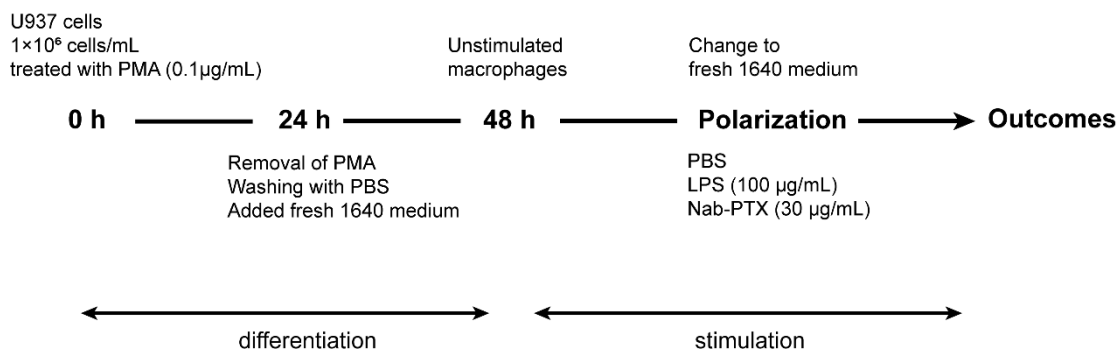


Supplementary Material

1 Supplementary Figures



Supplementary Figure 1. (a) U937 cells. (b) U937 cells were treated with PMA for 24 h and differentiated into macrophages. (c) U937 cells differentiated macrophages were treated with LPS. (d) U937 cells differentiated macrophages were treated with nab-PTX.



Supplementary Figure 2. Timeline of the experimental protocol used for PMA-induced macrophage differentiation and subsequent polarization in M1 conditions.