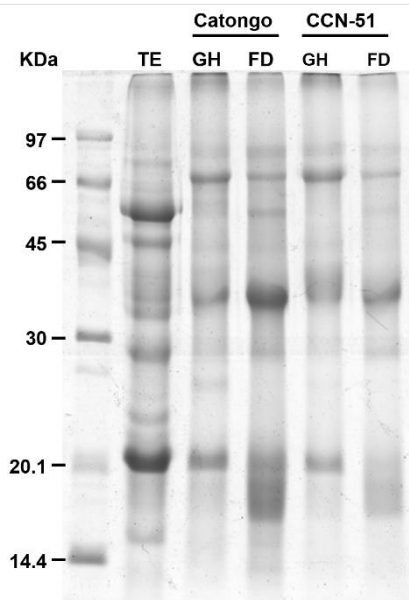
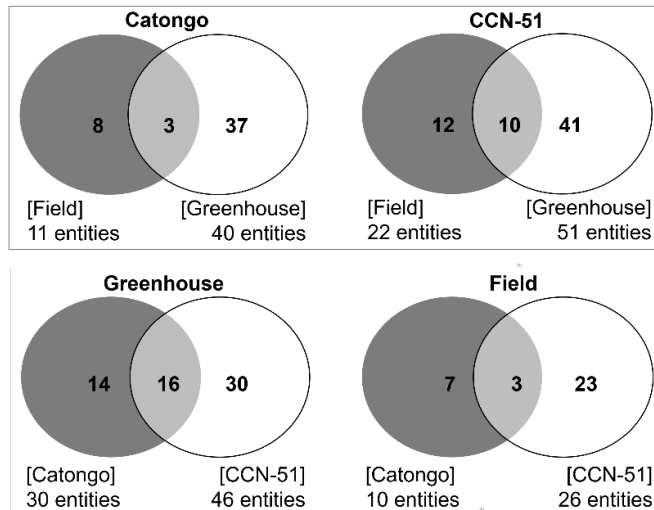


## Supplementary Material

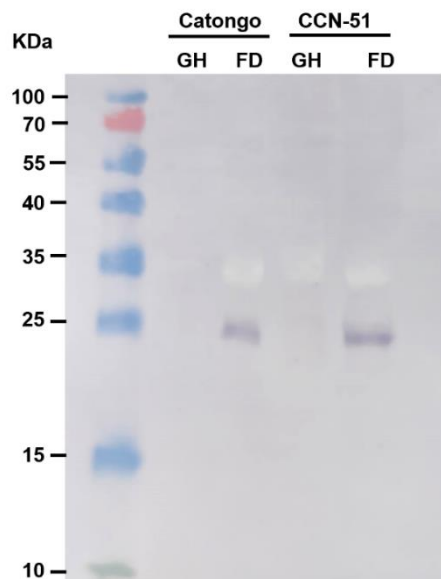
### Supplementary Figure 1



**Supplementary Figure 1** Protein profile of apoplastic washing fluid of *T. cacao* genotypes Catongo (susceptible) and CCN-51 (resistant) according to SDS-PAGE.; TE: CCN-51 genotype total extract; GH: proteins from apoplastic washing fluid from plants kept in a greenhouse; FD: apoplastic washing fluid proteins from green witches' broom leaves collected under field conditions. kDa: Molecular Weight Marker.

**Supplementary Figure 2**

**Supplementary Figure 2** Venn diagram representing the unique and common total proteins ( $p \leq 0.05$  and Fold change  $\geq 1.5$ ) identified in the apoplastic washing fluid of *T. cacao* genotypes Catongo (susceptible) and CCN-51 (resistant) from asymptomatic plants grown in a greenhouse and of green witches' broom stage plants grown under field conditions.

**Supplementary Figure 3**

**Supplementary Figure 3** PR-3 protein accumulation in samples of apoplastic washing fluid from *T. cacao* genotypes Catongo (susceptible) and CCN-51 (resistant) from asymptomatic plants grown in a greenhouse (GH) and of green witches' broom stage plants grown under field conditions (FD).