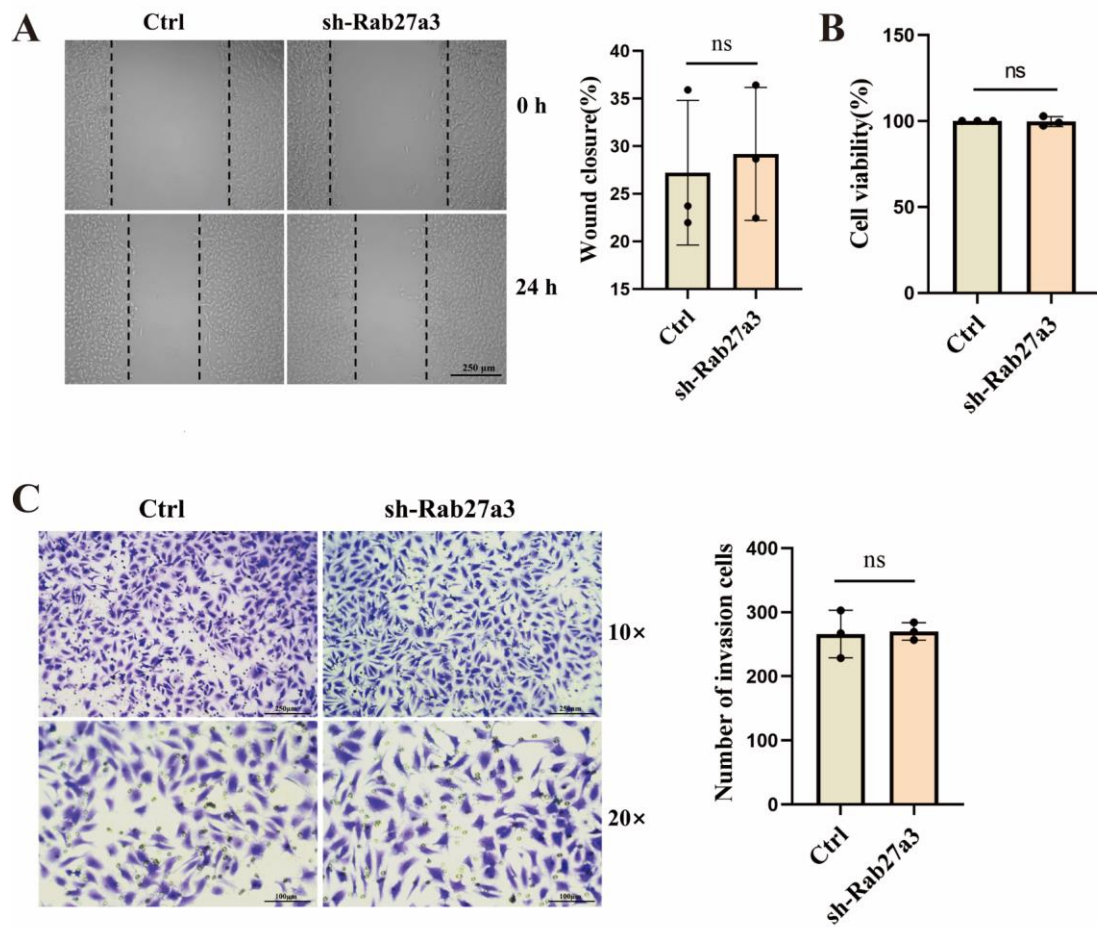
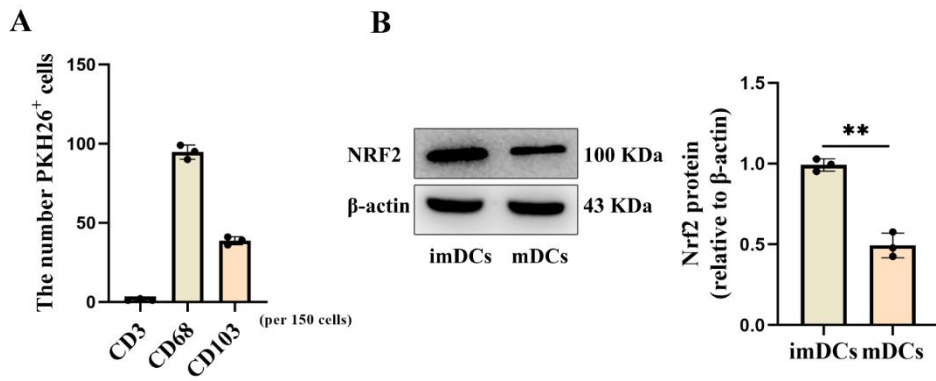


Fig.1 sh-Rab27a3 did not affect the viability, invasion and migration of C6 cells in vitro.



A Scratch assay was conducted to assess the migratory capability of C6 glioblastoma cells in both the 24 h control group and the sh-Rab27a3 group. Scale bars, 250 μ m. **B** Cell viability of C6 glioblastoma cells was assessed using the CCK8 assay in both the control group and the sh-Rab27a3 group. **C** The invasive ability of both the 24h Ctrl group and sh-Rab27a3 group was assessed through the Transwell assay, the count of invasive cells was quantified. Scale bars, 100 μ m.

Fig.2



A PHK26-labeled GDEs to co-culture with PBMCs and assess the uptake capacity of CD3 T cells, CD68 macrophages, and CD103 dendritic cells. **B** Analysis the expression level of NRF2 protein in imDCs and mDCs.