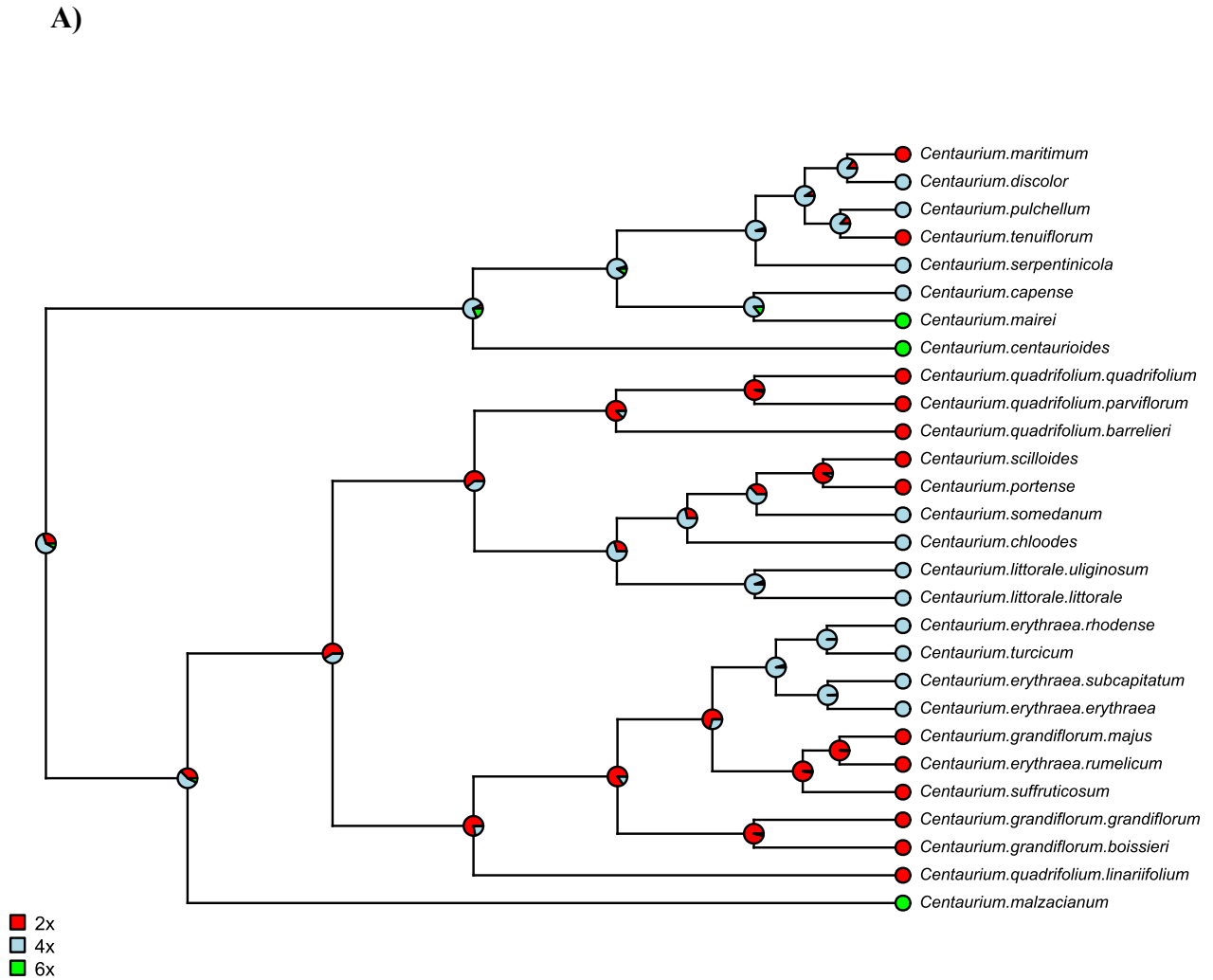
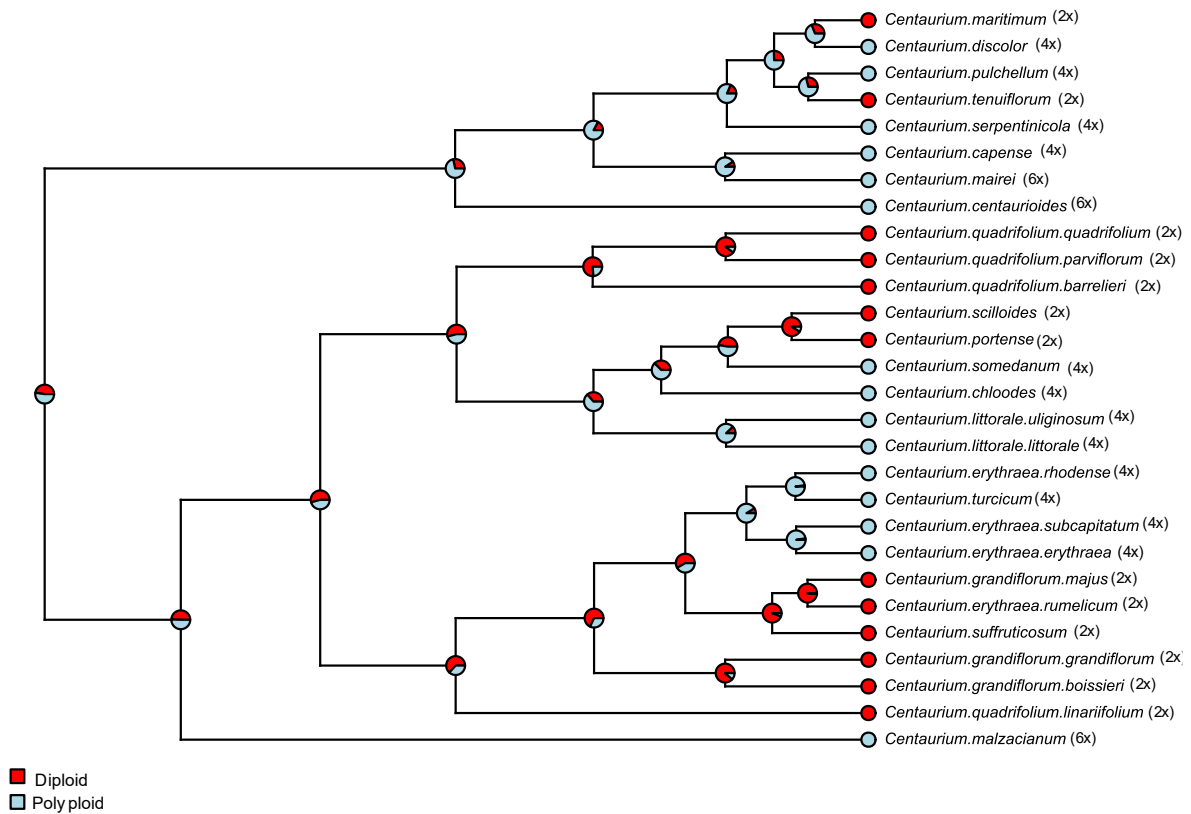


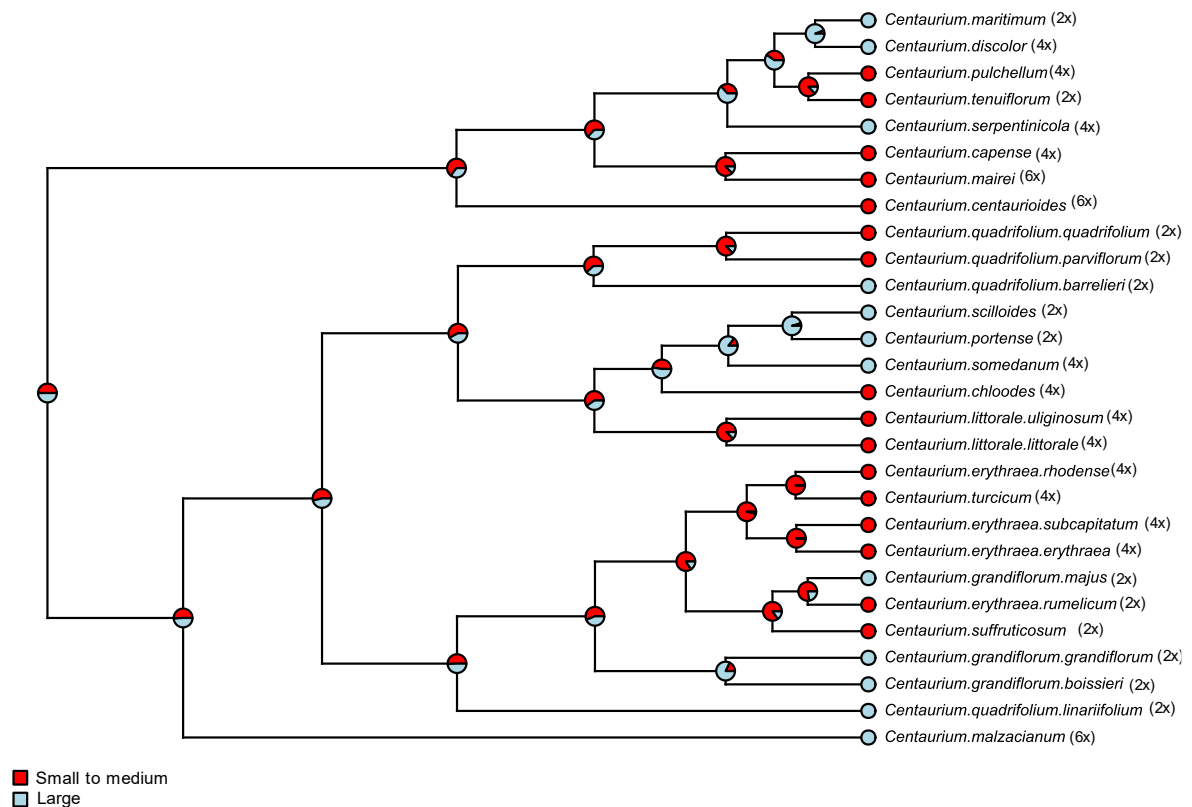
**Figure S3.** Reconstruction of ancestral states under stochastic mapping of **A)** ploidy levels (2x, 4x and 6x) **B)** ploidy level (diploid vs. polyploid), **C)** floral size (small to medium vs. large), **D)** floral display (low vs. high), **E)** herkogamy (low herkogamy vs. high-herkogamy) and **F)** life cycle (annual/biennial vs. perennial).



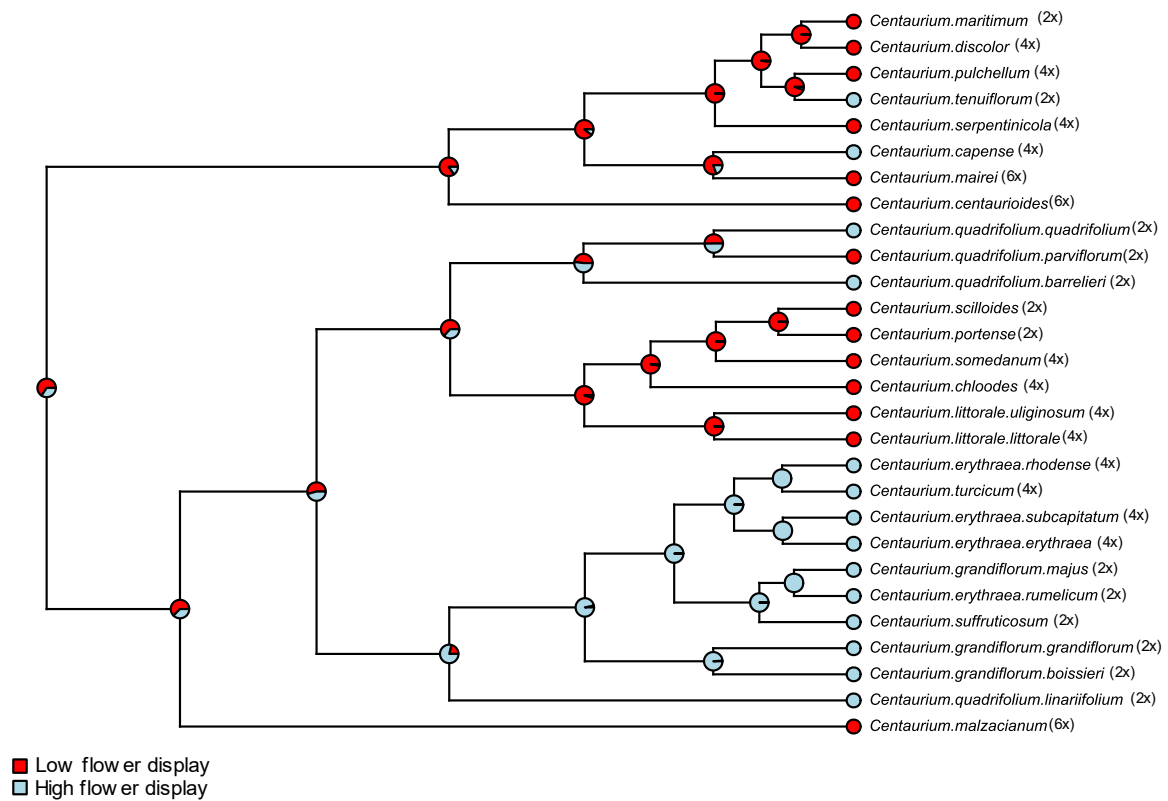
B)



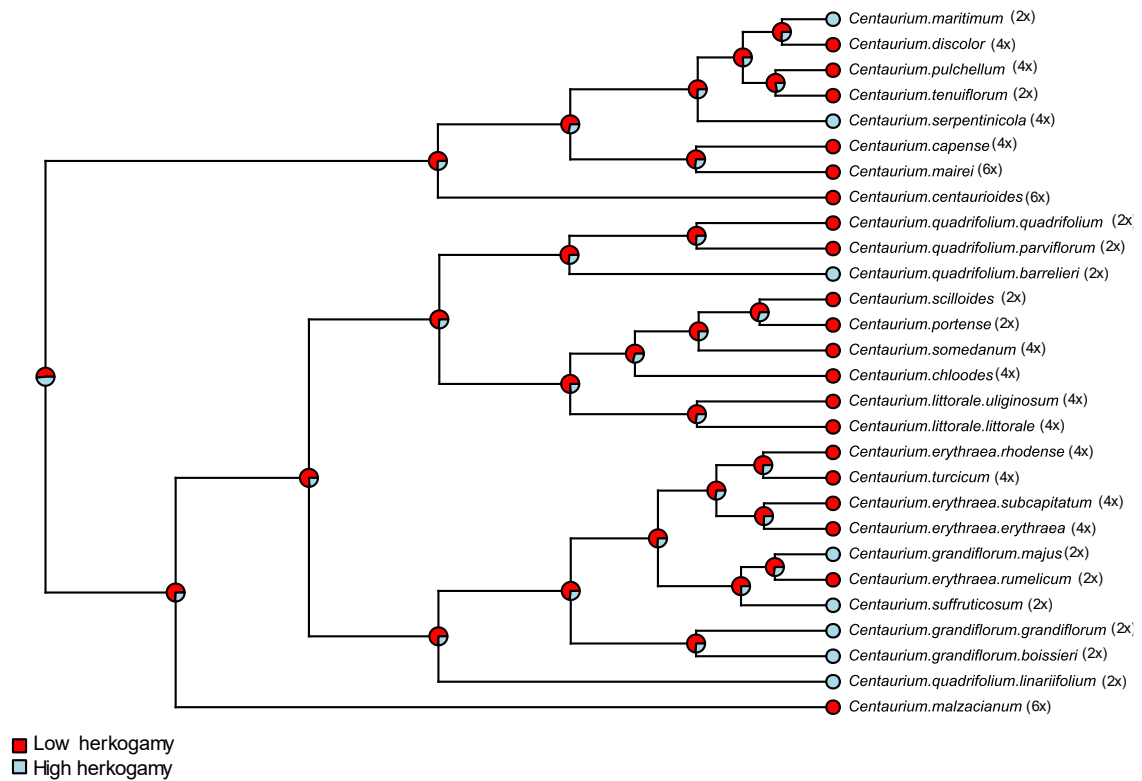
C)



D)



E)



F)

