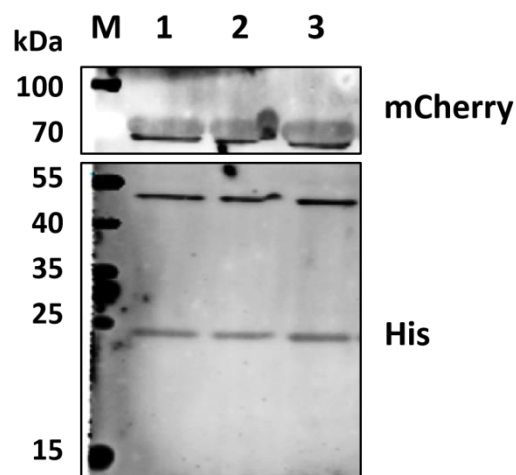


**Figure S1. Characterization of the expression of P22 VLP by SDS–PAGE.** M: protein marker; lines 1: with 0.1 mM IPTG induction of the indicated P22 VLP.



**Figure S2 Identification of three mCherry-conjugated P22 VLPs components by Western blot (WB).** M: protein marker; line 1-3: purified P22 VLP-mCherry, P22 VLP-mCherry-TAT, and P22 VLP-mCherry-8R. The 75 kDa band corresponded to the mCherry-modified coat protein (CP), while the unmodified CP and SP were observed at 50 kDa and 22.5 kDa, respectively.