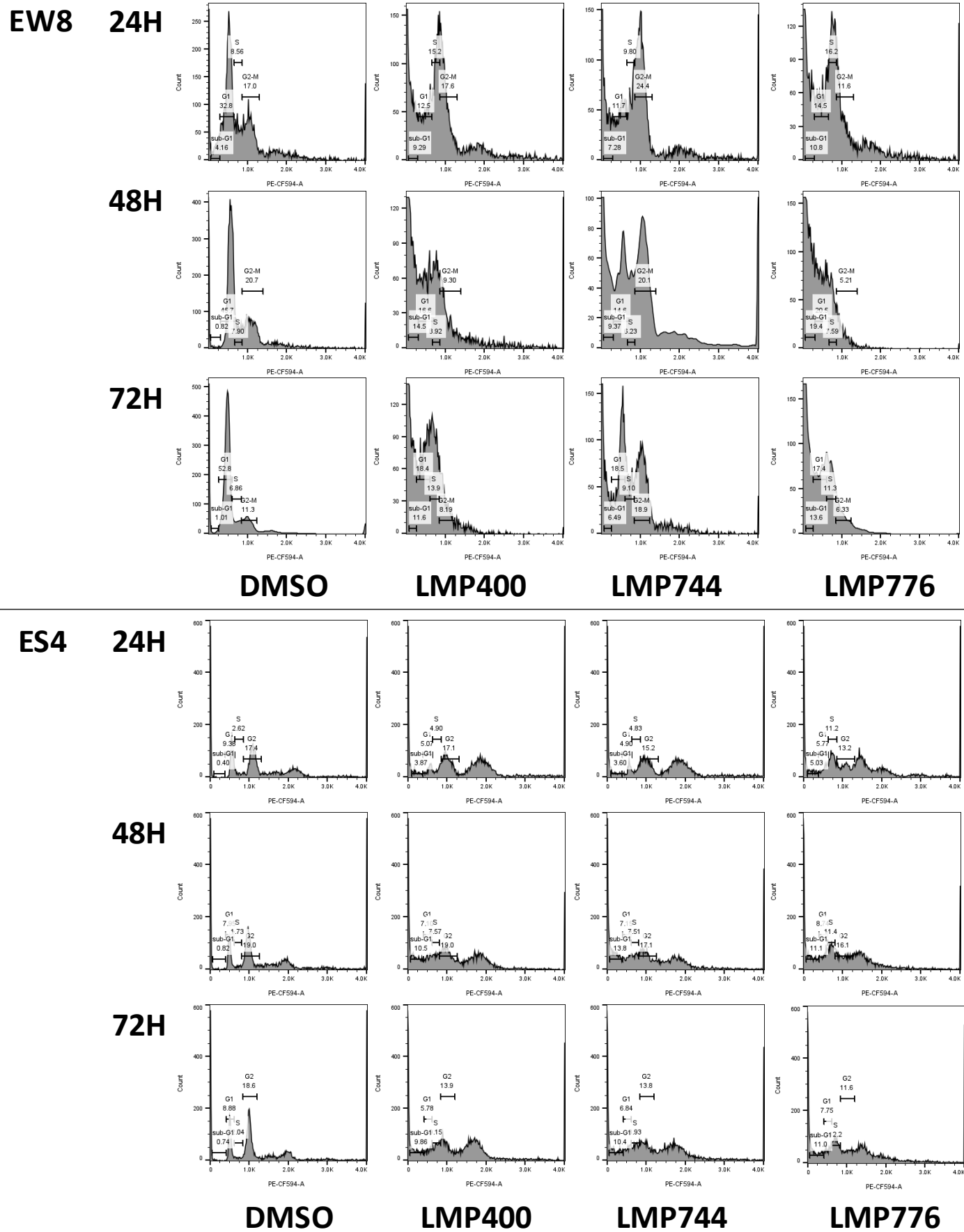


Supplemental Figure S3



**Supplemental Figure S3. IIQ treatments demonstrate time-dependent accumulation of sub-G1 population in EWS cell lines.** Representative histograms as analyzed by FlowJo showing the changes in cell cycle of EW8 and ES4 cell lines treated for 24, 48, and 72 hours with DMSO, LMP400 (40 nM), LMP744 (80 nM for EW8 and 40 nM for ES4), or LMP776 (40 nM).