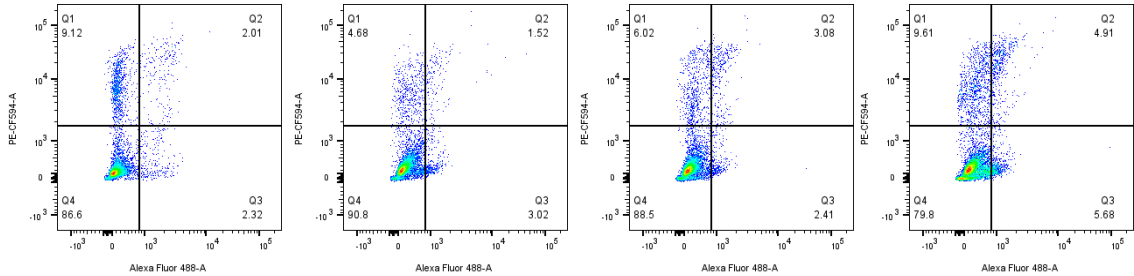
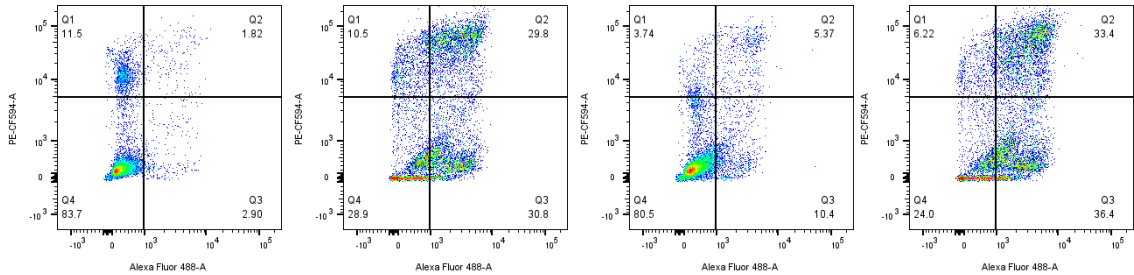


Supplemental Figure S4

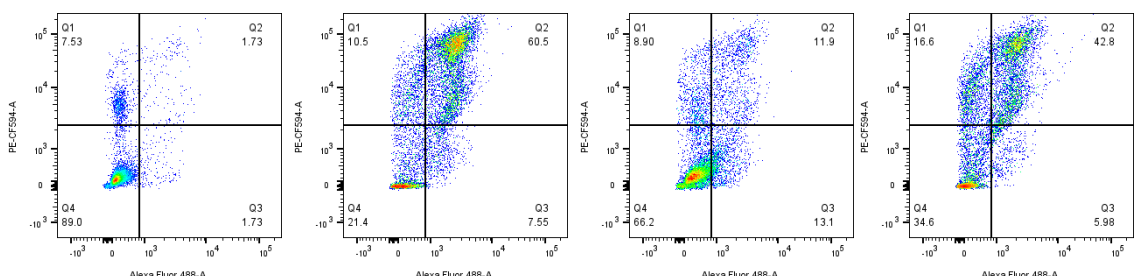
EW8 24H



48H

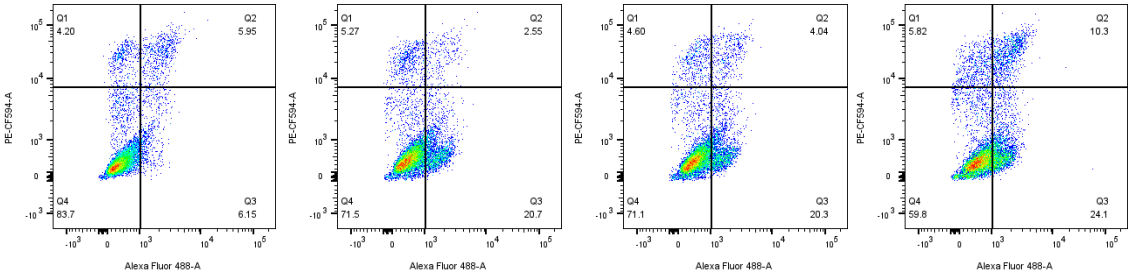


72H

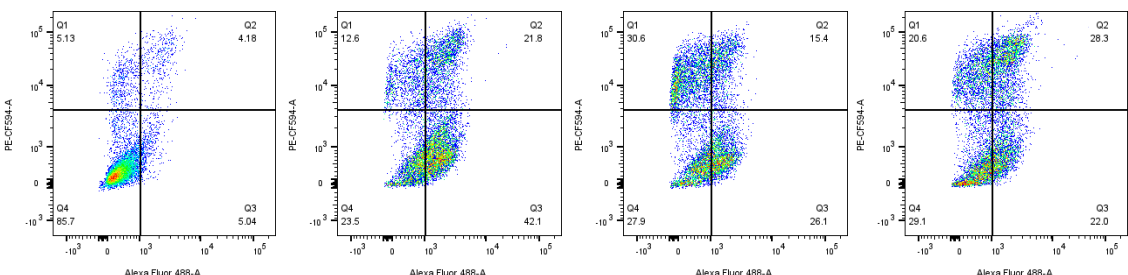


DMSO LMP400 LMP744 LMP776

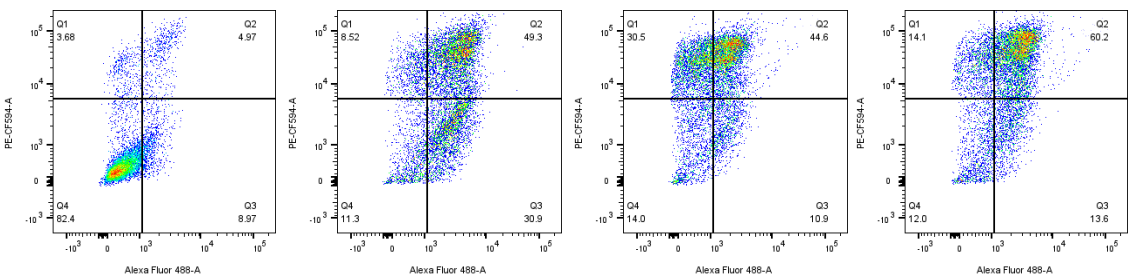
ES4 24H



48H



72H



DMSO LMP400 LMP744 LMP776

**Supplemental Figure S4. IIQ treatments demonstrate time-dependent accumulation of early and late apoptotic populations in EWS cell lines.** Representative flow plots as analyzed by FlowJo showing the shift towards early (Q3) and late (Q2) apoptosis of EW8 and ES4 cell lines treated for 24, 48, and 72 hours with DMSO, LMP400 (40 nM), LMP744 (80 nM for EW8 and 40 nM for ES4), or LMP776 (40 nM).