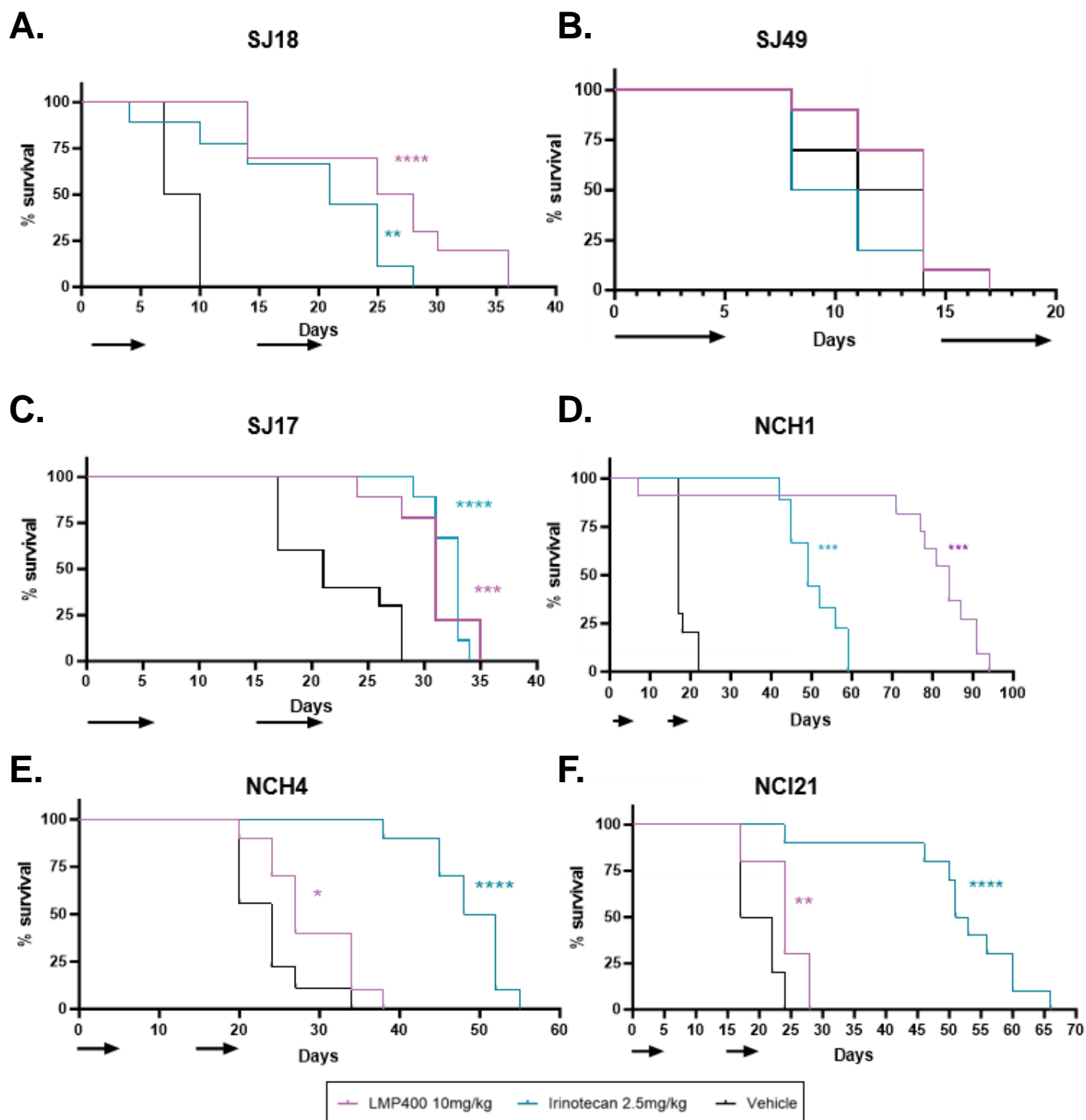


## Supplemental Figure S6



**Supplemental Figure S6. LMP400 10 mg/kg IV treatment administered on a 5-day-on/9-day-off/5-day-on treatment cycle prolongs survival compared to vehicle in 5 of 6 EWS PDX models.** Kaplan-Meier survival curves for the expanded efficacy studies (n=10 mice/condition) for each of the six EWS PDX models (SJ18 **(A)**, SJ49 **(B)**, SJ17 **(C)**, NCH1 **(D)**, NCH4 **(E)**, and NCI21 **(F)**). Curves reflect survival to tumor size endpoint. Log-rank (Mantel-Cox) test was performed for each model to compare the treated groups to the vehicle. (\* indicates  $p \leq 0.05$ , \*\* indicates  $p \leq 0.01$ , \*\*\* indicates  $p \leq 0.001$ , \*\*\*\* indicates  $p \leq 0.0001$ ). Additional Log-rank (Mantel-Cox) test was performed to compare Irinotecan to LMP400 for each model. p-values are as follows: SJ18 **(A)**:  $p=0.0512$ , SJ49 **(B)**:  $p=0.0732$ , SJ17 **(C)**:  $p=0.7905$ , NCH1 **(D)**:  $p<0.0001$ , NCH4 **(E)**:  $p<0.0001$ , NCI21 **(F)**:  $p<0.0001$ .