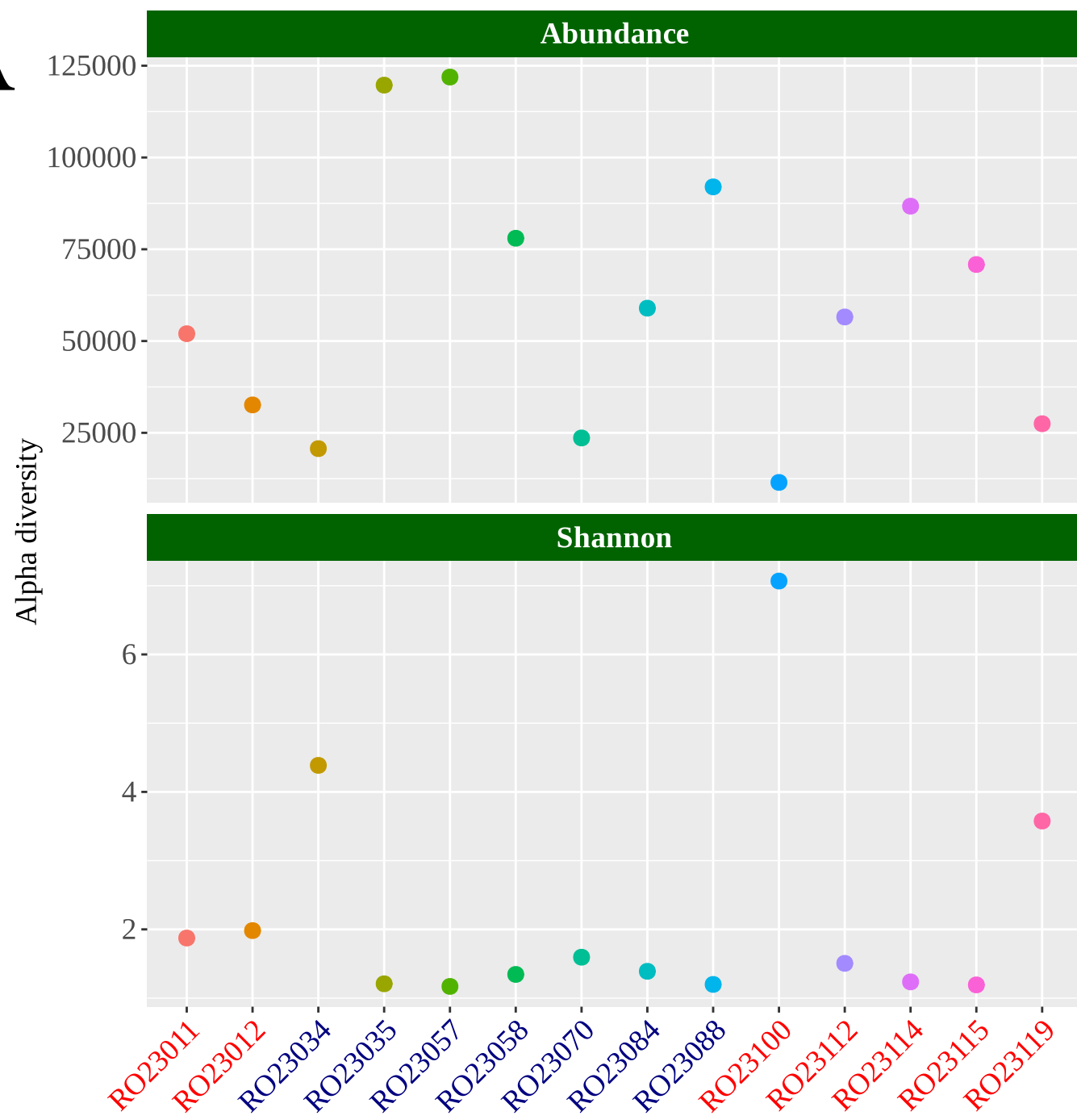
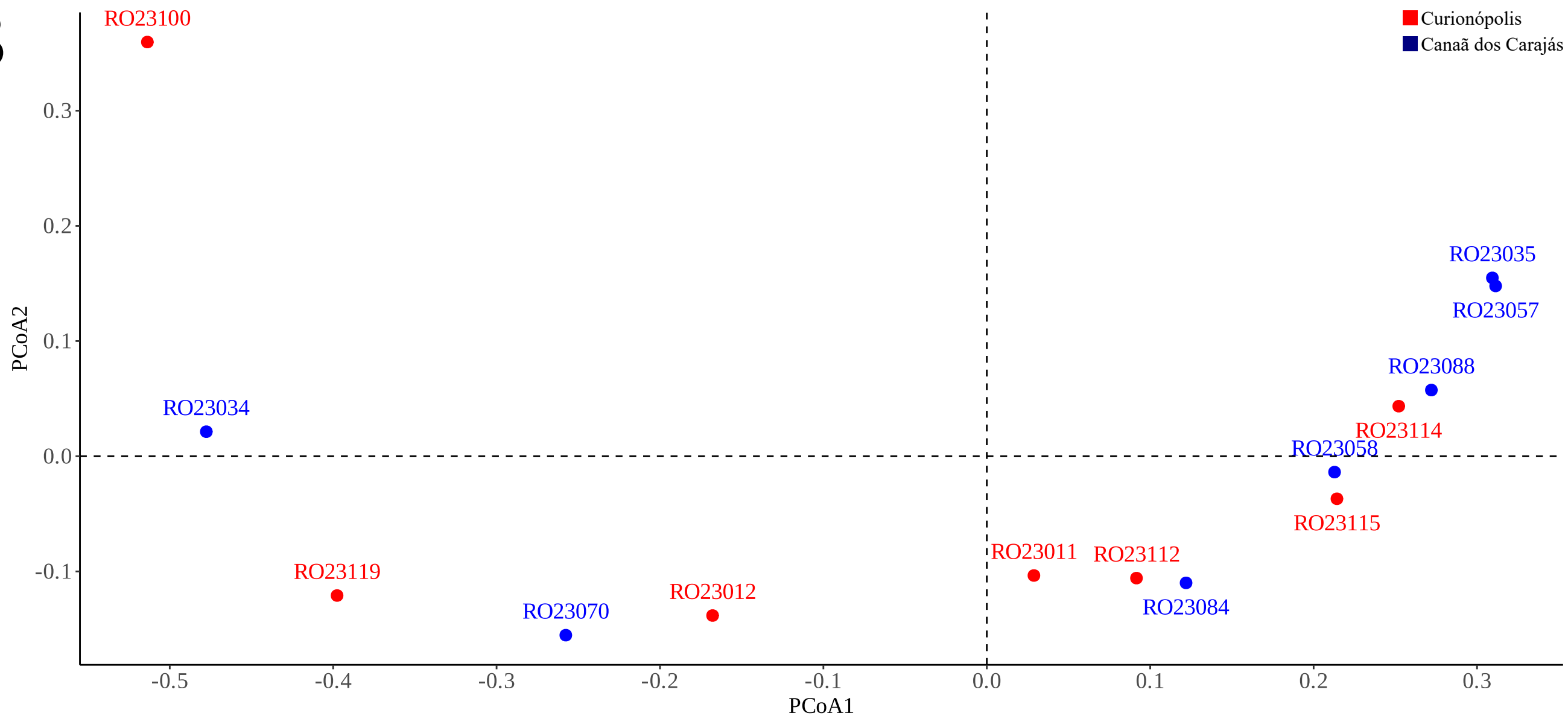


**A****B**

**Supplementary Figure 1.**(A) Alpha diversity plots showing abundance, richness, and the Shannon and Simpson diversity indices. (B) Principal component analysis (PCoA) based on the Bray-Curtis dissimilarity matrix. Samples from the Canaã dos Carajás and Curionópolis regions are highlighted in blue and red, respectively.