

Figure S1. The target fragment with restriction sites

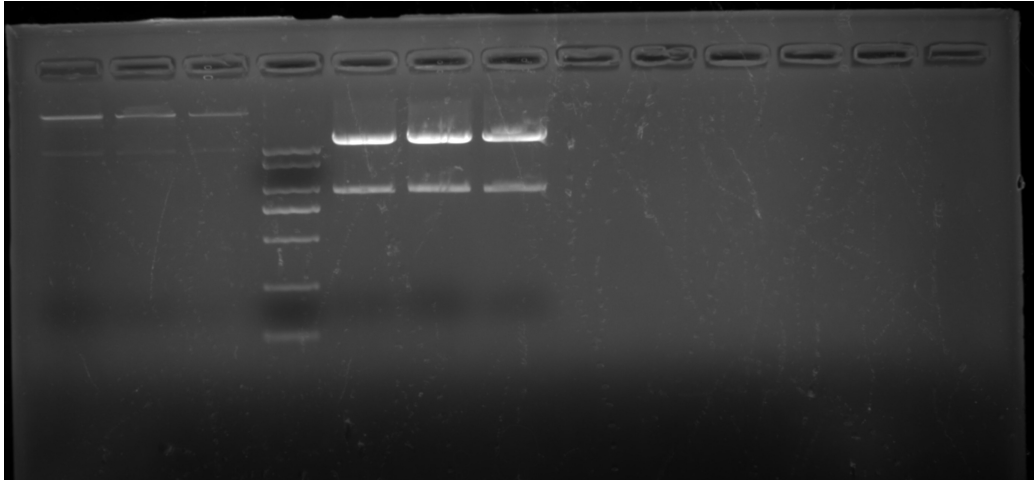


Figure S2. Double-enzyme digestion was used to validate the constructed overexpression vector (Three on the right).

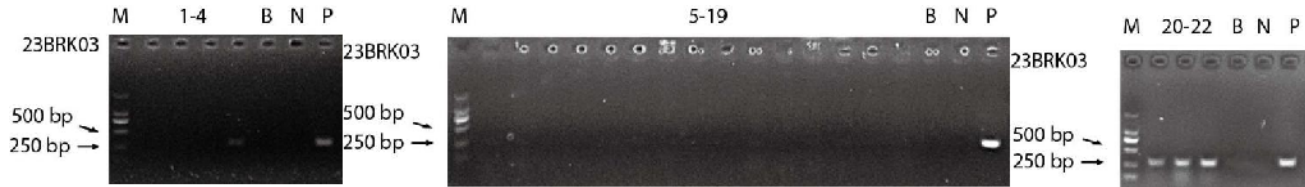


Figure S3. Positive detection of T0 transgenic seedlings.

M N P

1-22

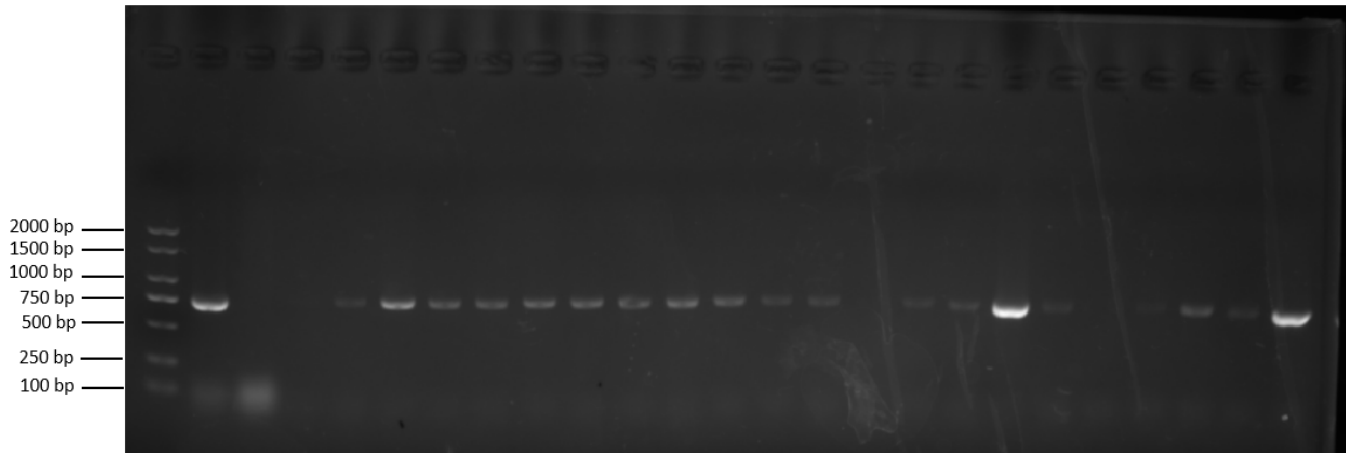


Figure S4. Positive detection of the T1 generation PDX1.3#20 transgenic plants.

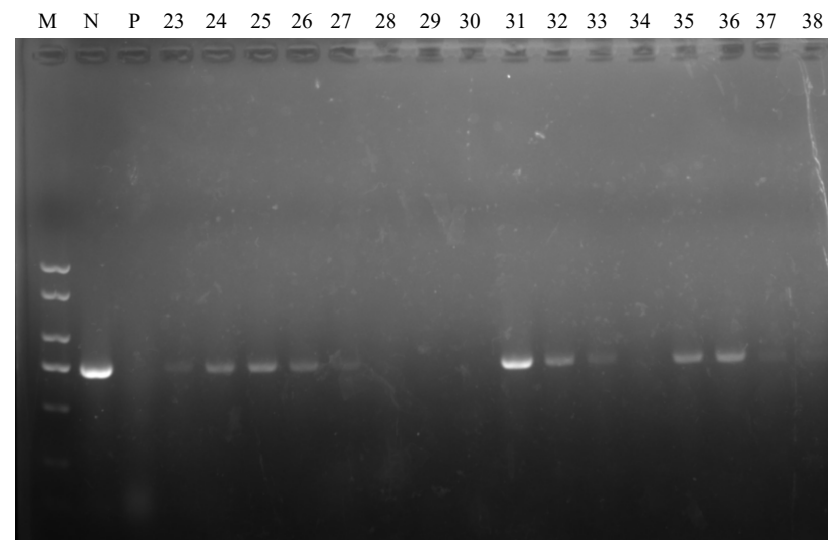
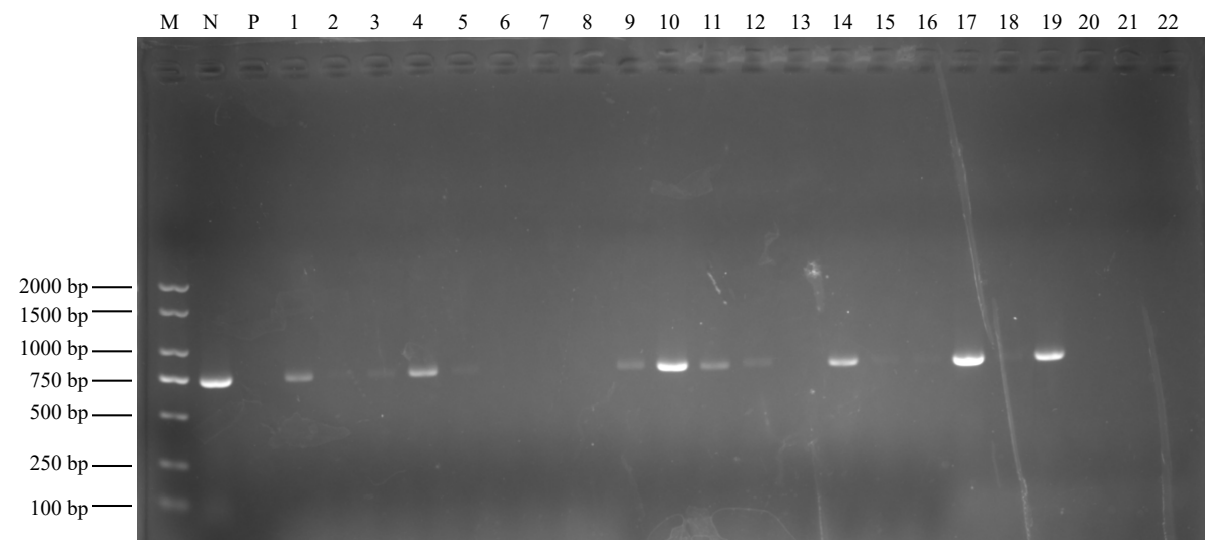


Figure S5. Positive detection of the T1 generation PDX1.3#21transgenic plants.



Figure S6. The phenotype of plants before waterlogging treatment.