

Supplementary Materials

1 Distribution of correct answer options after random shuffling

To verify the randomness of the correct answer location, we plotted the distribution of correct answers for five new shuffled exam sets. In Fig. 1, each color represents a distinct position of the correct answer. From the figure, we can see that the locations are indeed fairly random, which supports our testing procedures with these new exam sets.

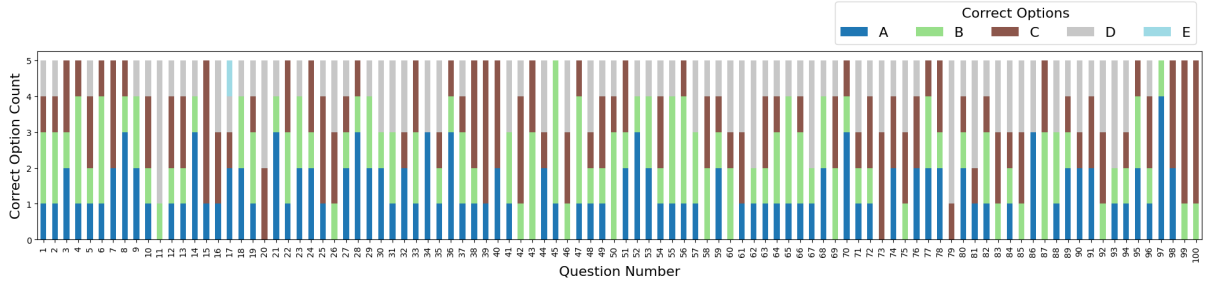


Figure 1: Distribution of correct answer options after random shuffling (note: only two questions offered option E).