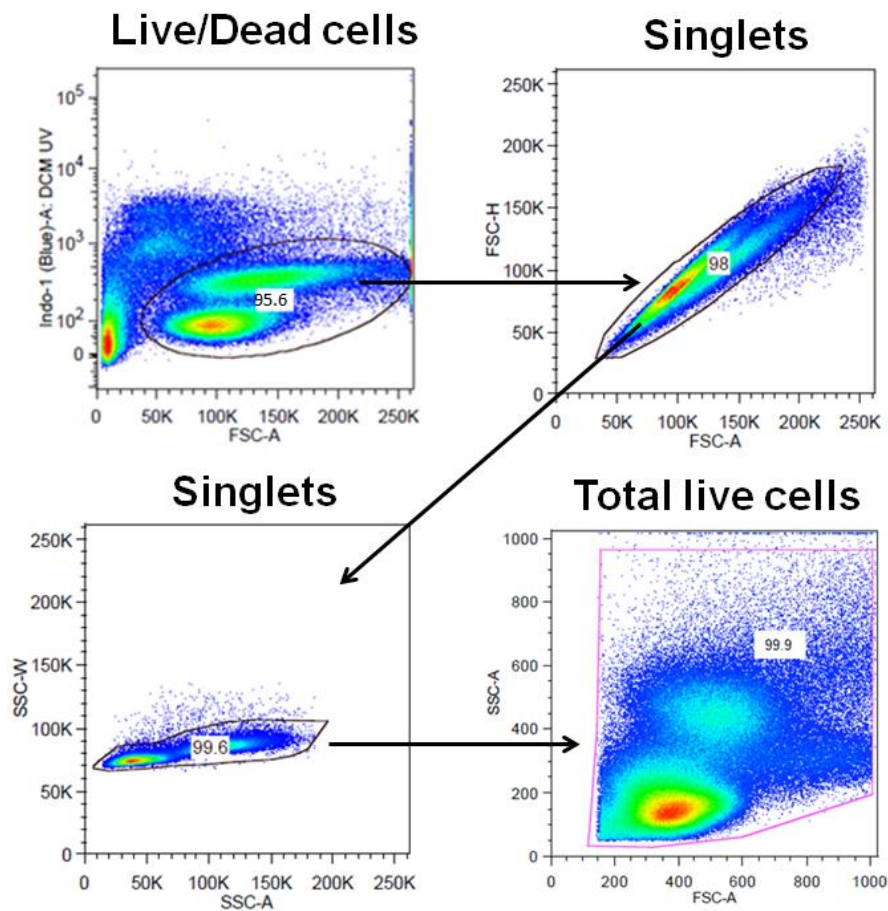


SUPPLEMENTARY FIGURE 1



Supplementary Figure 1 Gating strategy of neutrophils for flow cytometry analysis.

Gating was based on the following strategy: FSC-A vs. Indo-1(Blue)-A:DCM UV for the selection of live cells, FSC-A vs. FSC-H for singlets, SSC-A vs. SSC-W for the better resolution of multiplets, FSC vs. SSC for gating the cells on the basis of size and granularity respectively. Neutrophils were then analyzed on the basis of CD11b and CD16 positivity.