

**A Space-time Study of Hemorrhagic Fever with Renal Syndrome (HFRS) and its
Climatic Associations in Heilongjiang Province, China**

Junyu He¹, George Christakos^{1,2,*}, Wenyi Zhang^{3,*}, Yong Wang³

¹ Institute of Islands and Coastal Ecosystems, Ocean College, Zhejiang University, Zhoushan, China

² Department of Geography, San Diego State University, San Diego, CA, USA.

³ Institute of Disease Control and Prevention, Academy of Military Medical Science, Beijing, China

* Correspondence: George Christakos gchristakos@zju.edu.cn and Wenyi Zhang zwzy0419@126.com

Supporting Information

Figure S1 Distribution of data points in (a) the $R^2 \times T$ domain and (b) the R^2 domain.

Figure S2 Mean absolute prediction error of cross validation in each month

Figure S3~S11 HFRS incidence maps from 2005 to 2013

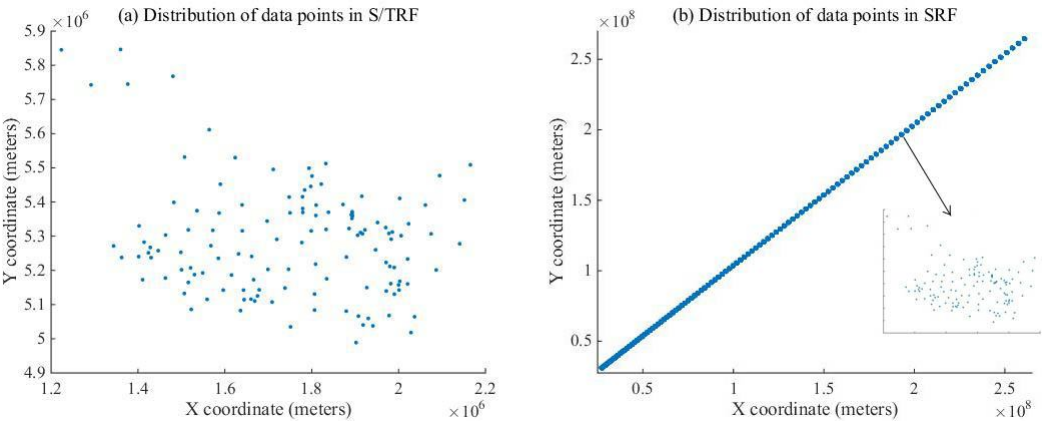
Figure S12 Averaged monthly HFRS incidence during 2005 and 2013

Figure S13 Plots of spatiotemporal empirical covariances and the fitted theoretical model in (a) the $R^2 \times T$ domain and (b) the R^2 domain with annual HFRS incidence.

Figure S14 Drainage map in Heilongjiang province

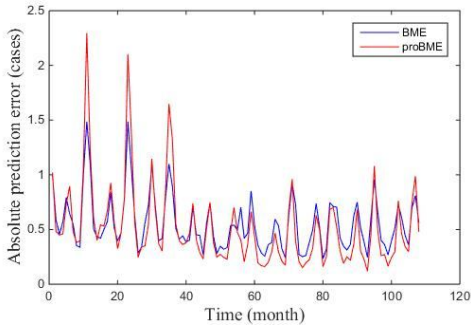
Figure S15 Distribution of land type in Heilongjiang province

21



22

23 **Figure S1:** Distribution of data points in (a) the $R^2 \times T$ domain and (b) the R^2 domain. Same
24 geographic coordinate points from different time instants are overlapped in (a); Points from
25 different time were gathered together, which seem like one point in (b).
26



27

28 **Figure S2:** Mean absolute prediction error of cross validation in each month.
29

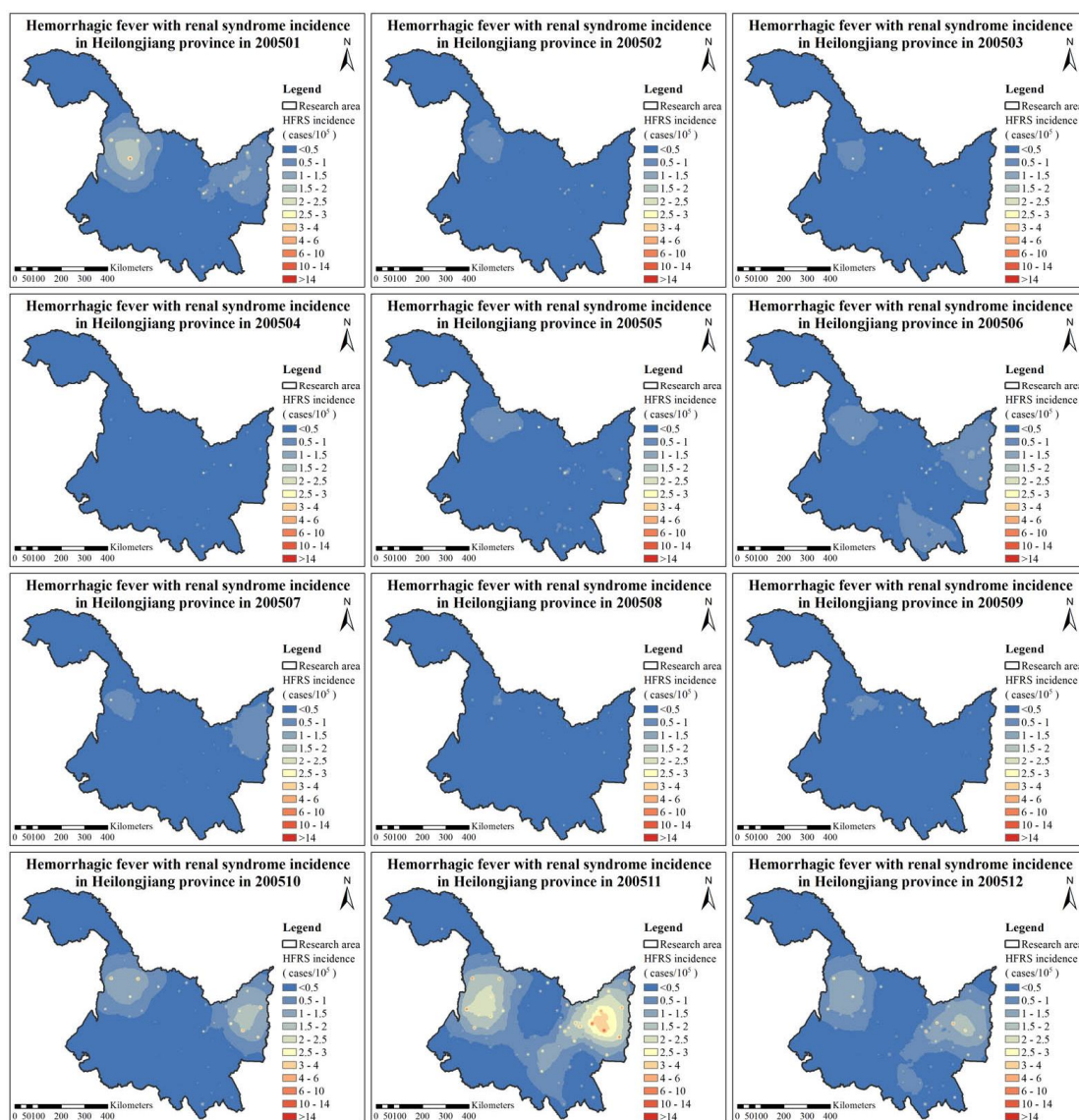


Figure S3: HFRS incidence maps in 2005.

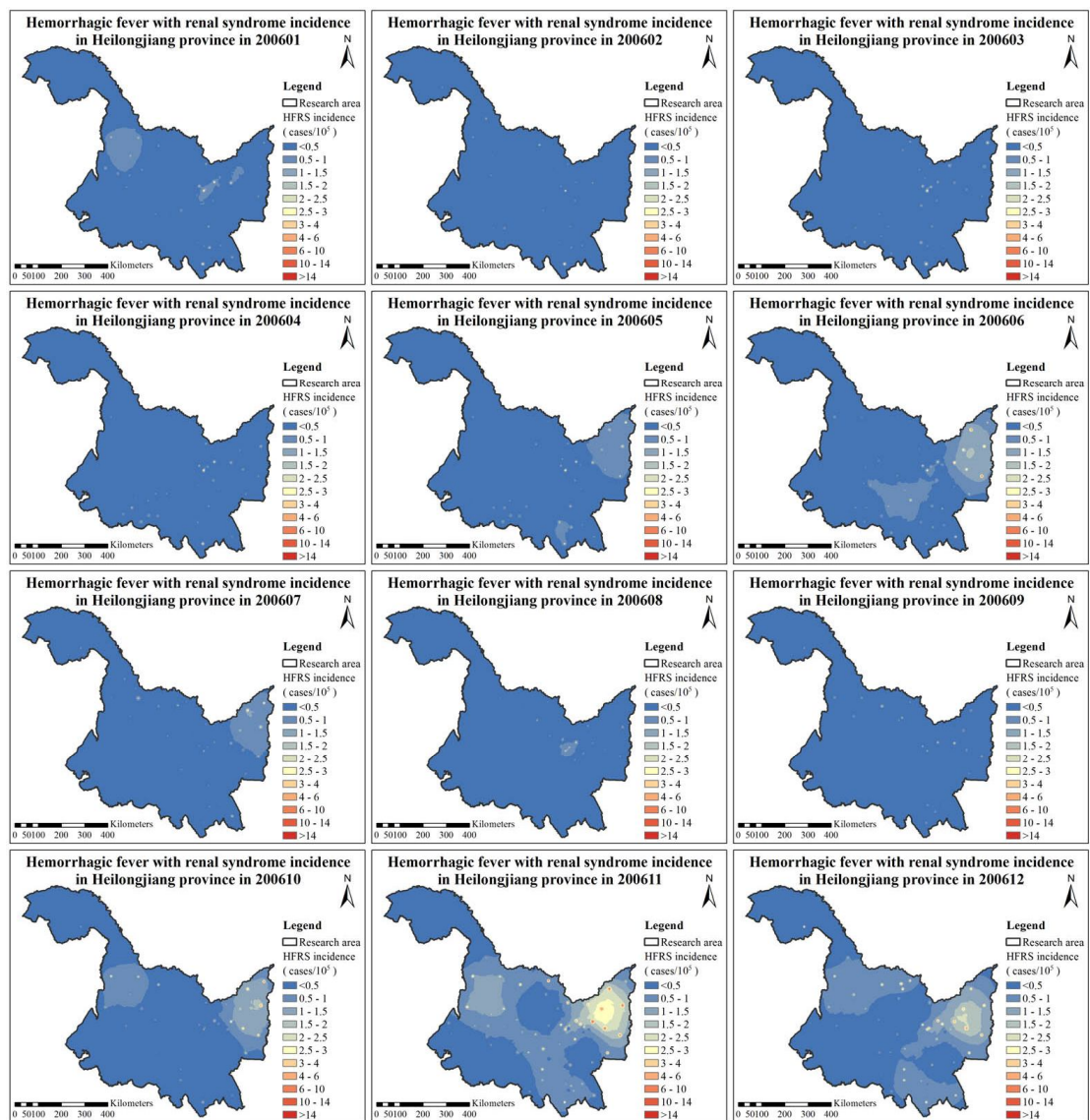


Figure S4: HFRS incidence maps in 2006.

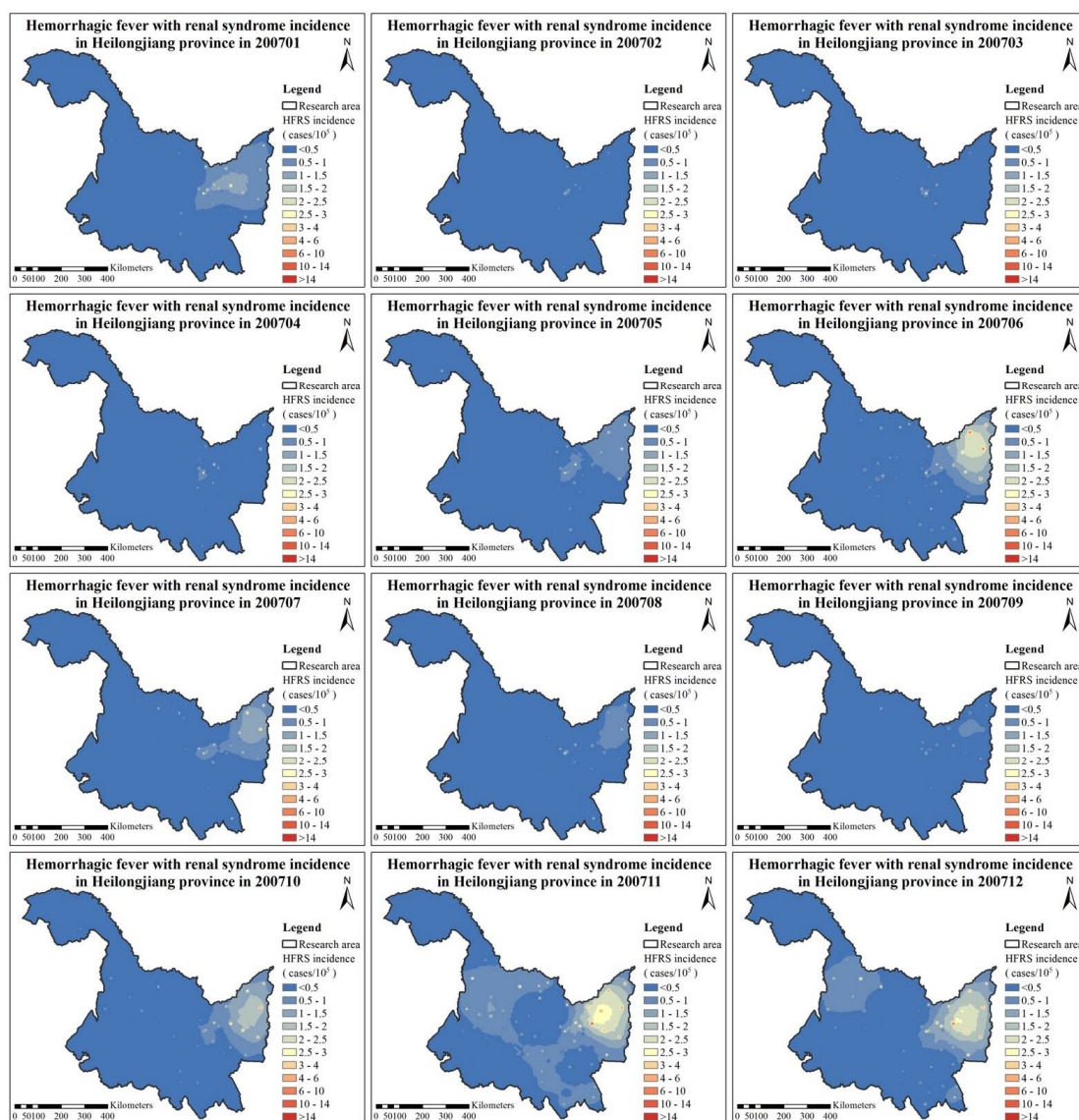


Figure S5: HFRS incidence maps in 2007.

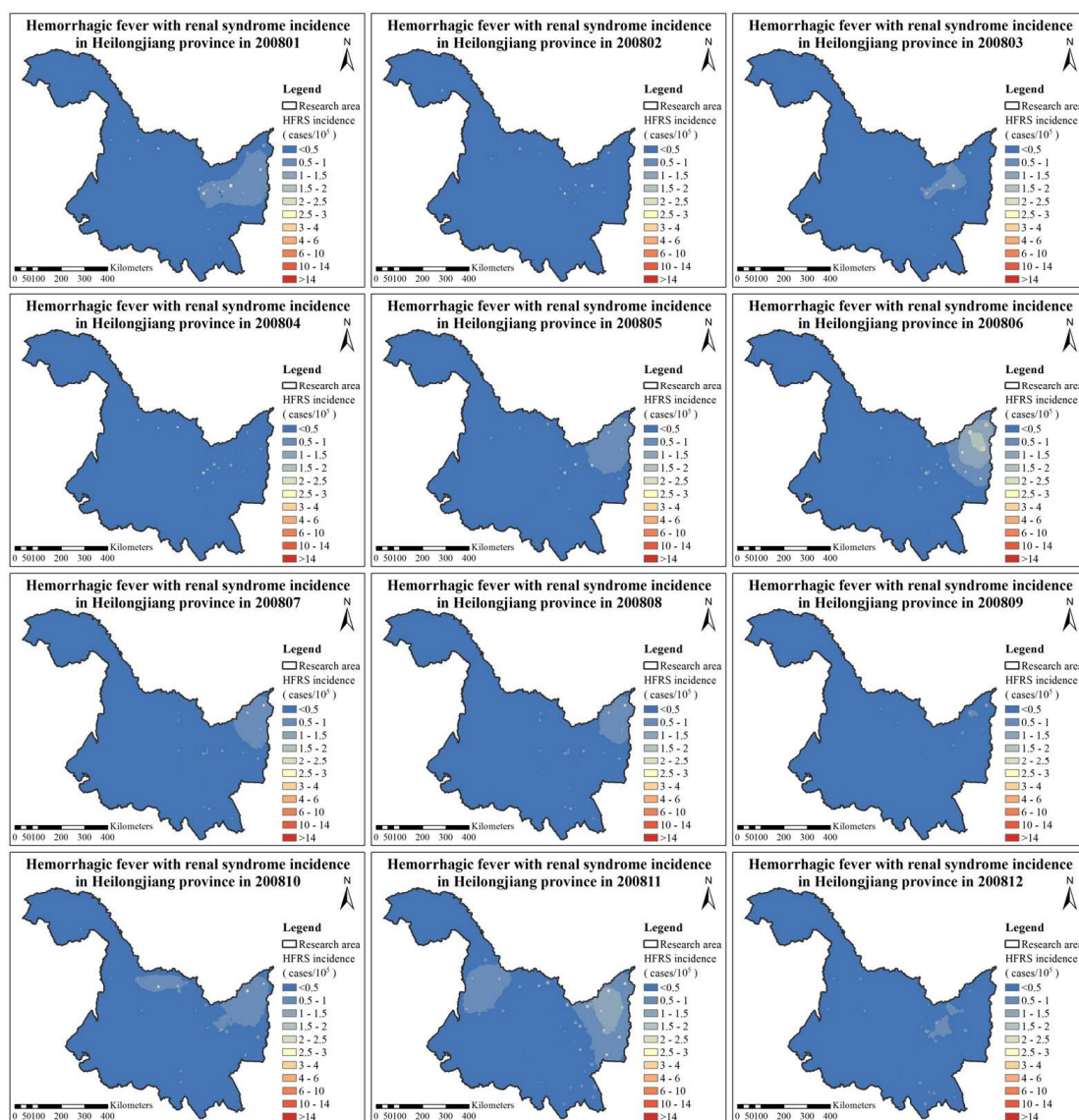


Figure S6: HFRS incidence maps in 2008.

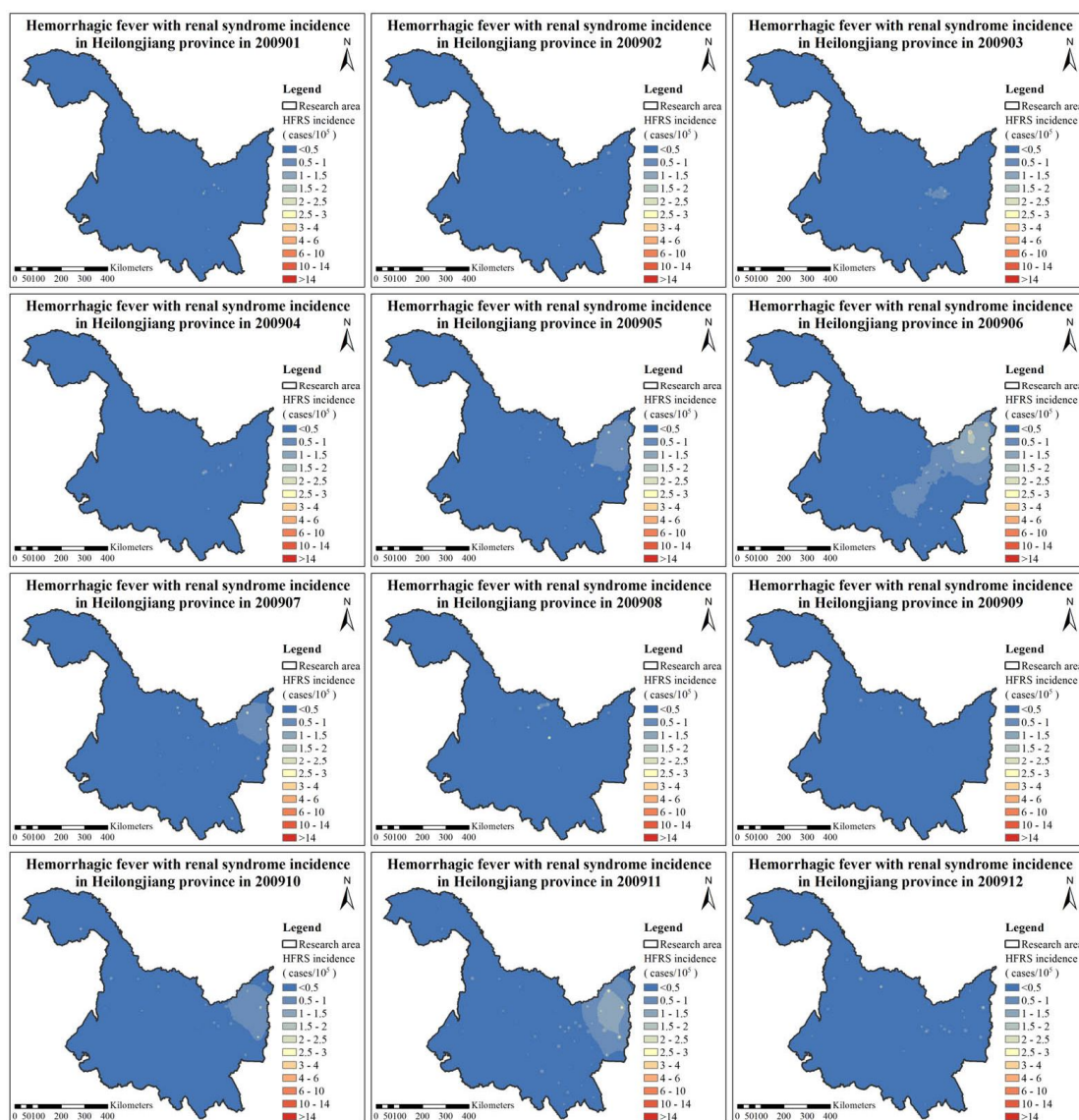


Figure S7: HFRS incidence maps in 2009.

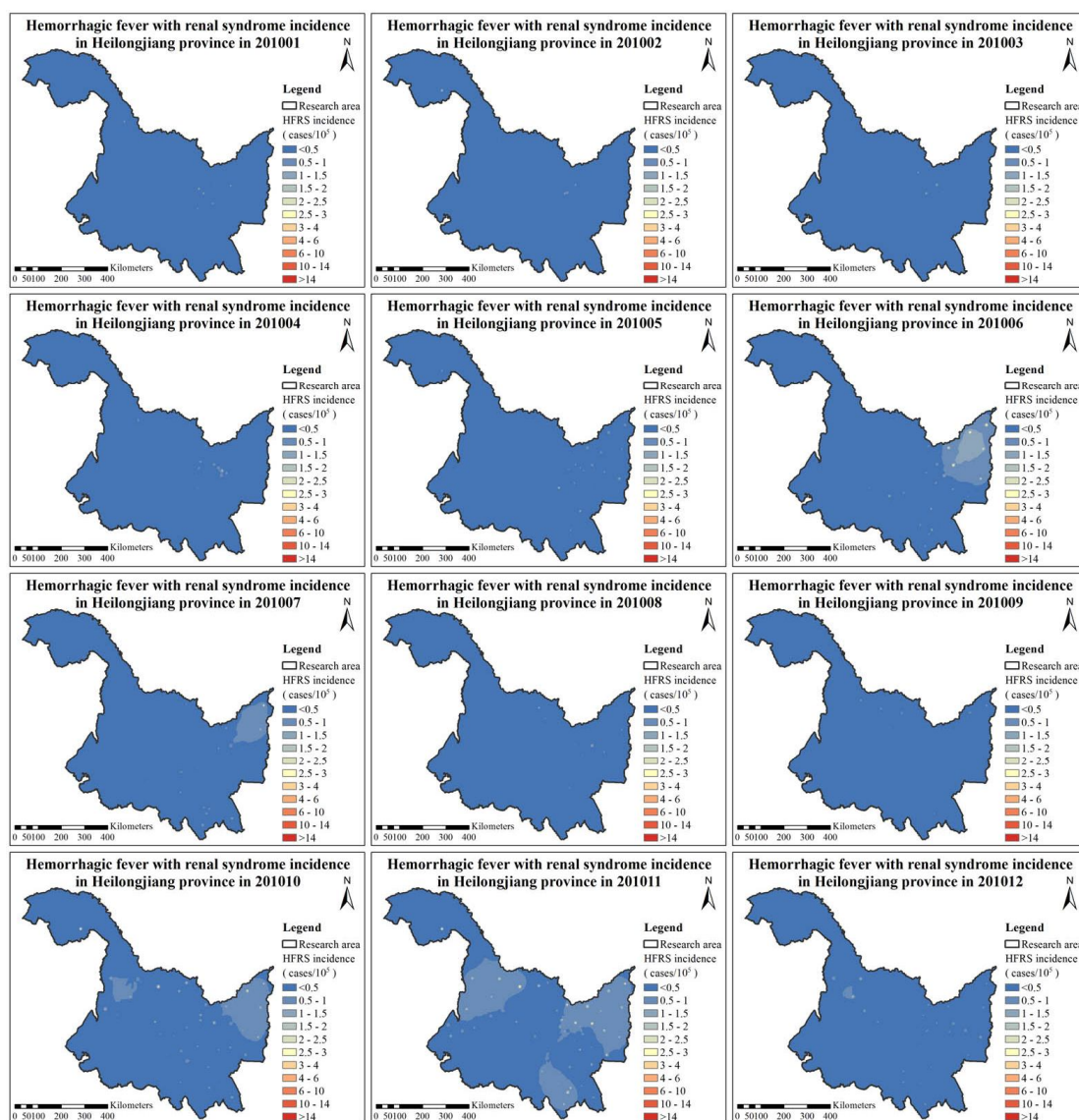


Figure S8: HFRS incidence maps in 2010.

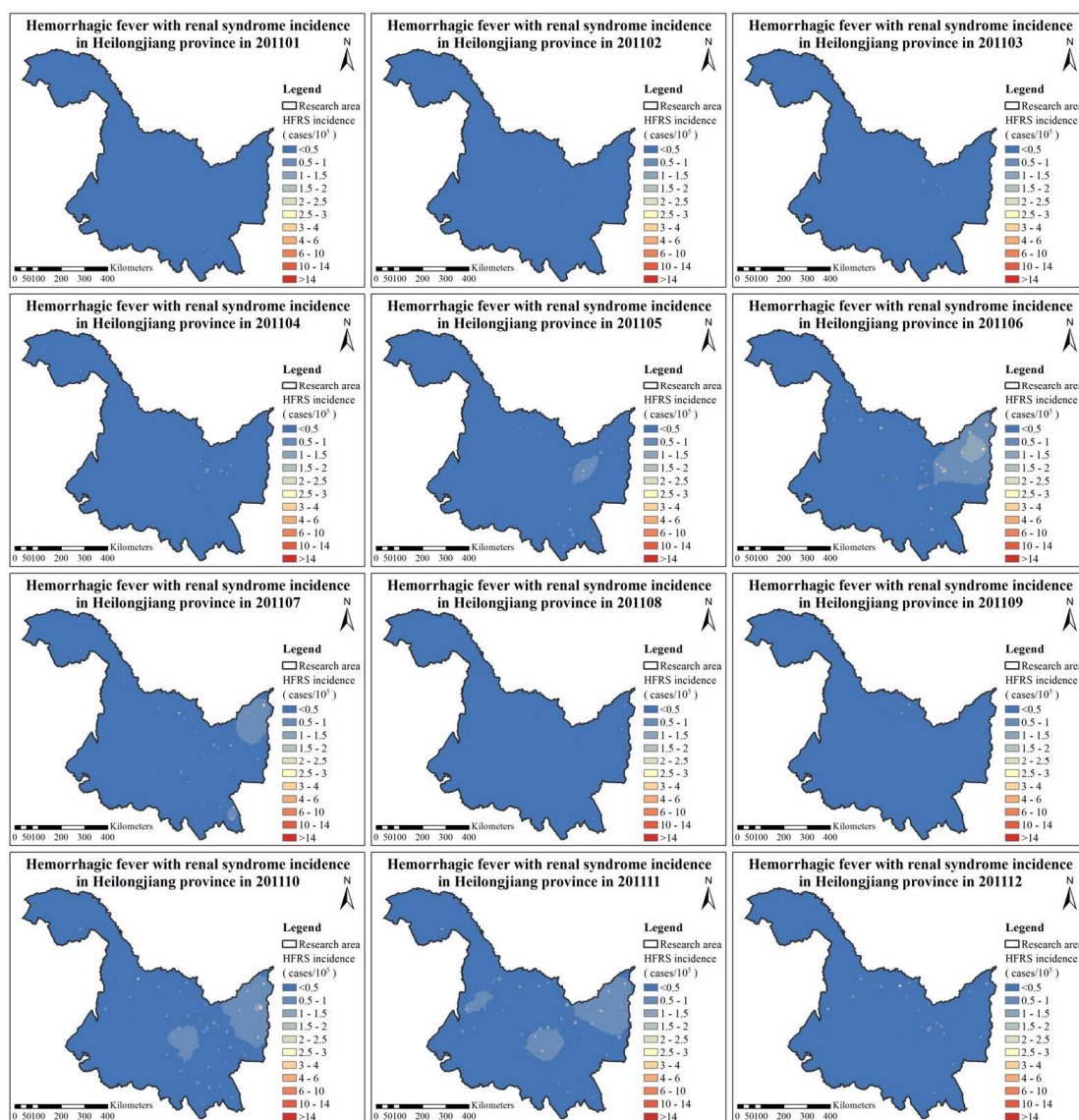


Figure S9: HFRS incidence maps in 2011.

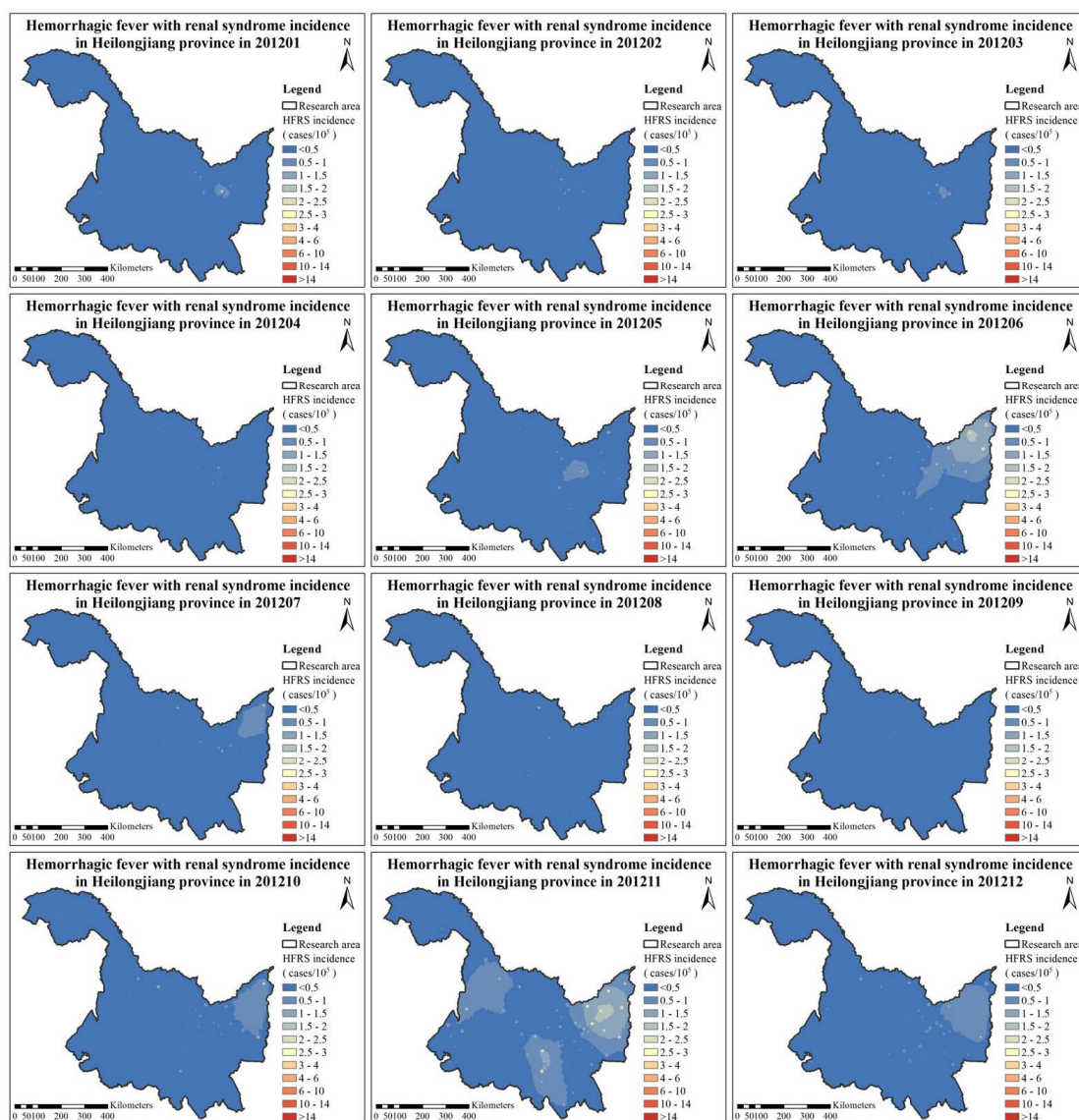


Figure S10: HFRS incidence maps in 2012.

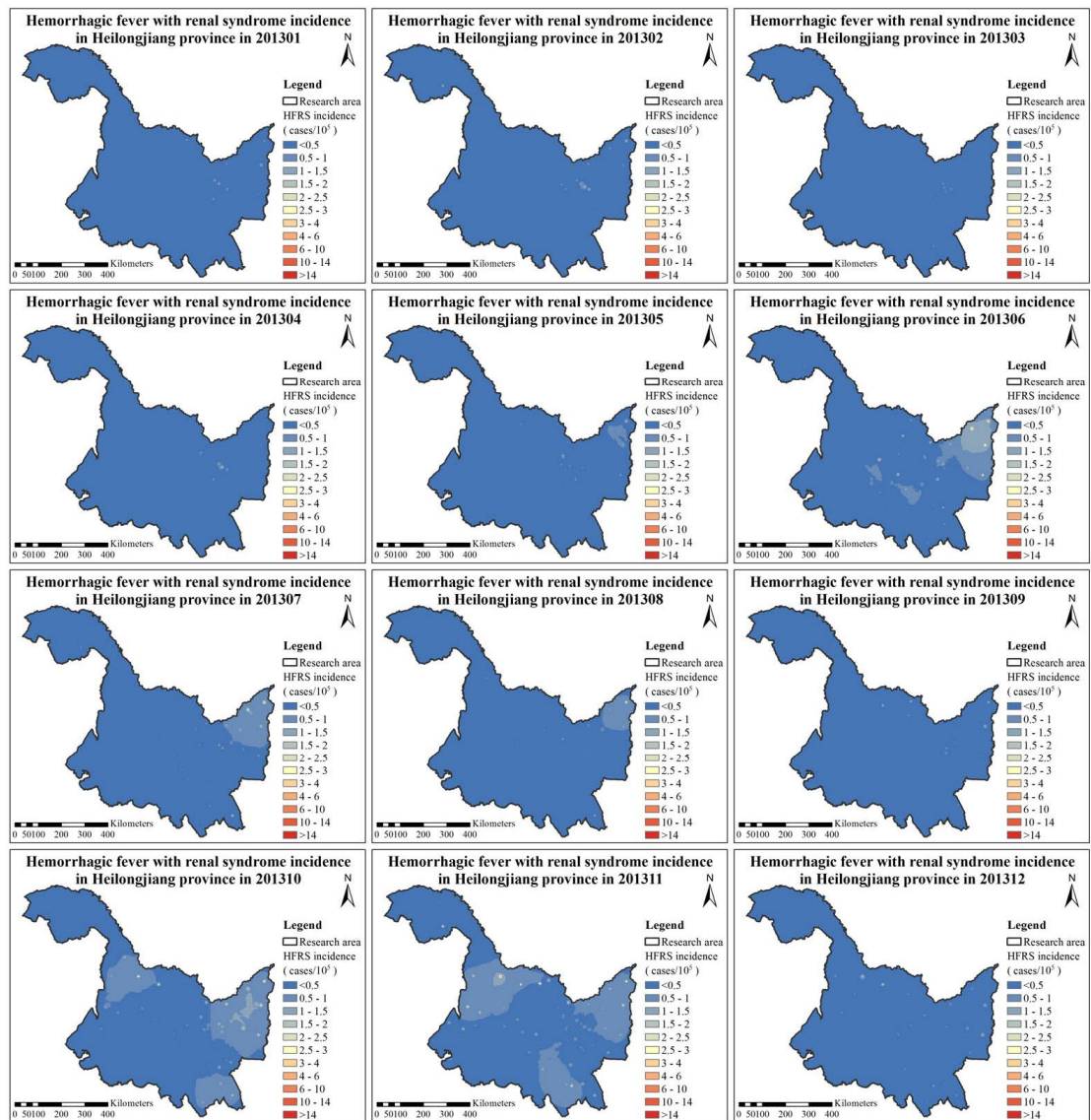


Figure S11: HFRS incidence maps in 2013.

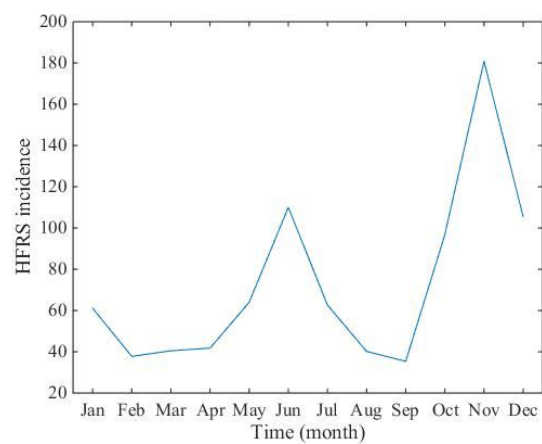


Figure S12: Averaged monthly HFRS incidence during 2005 and 2013.

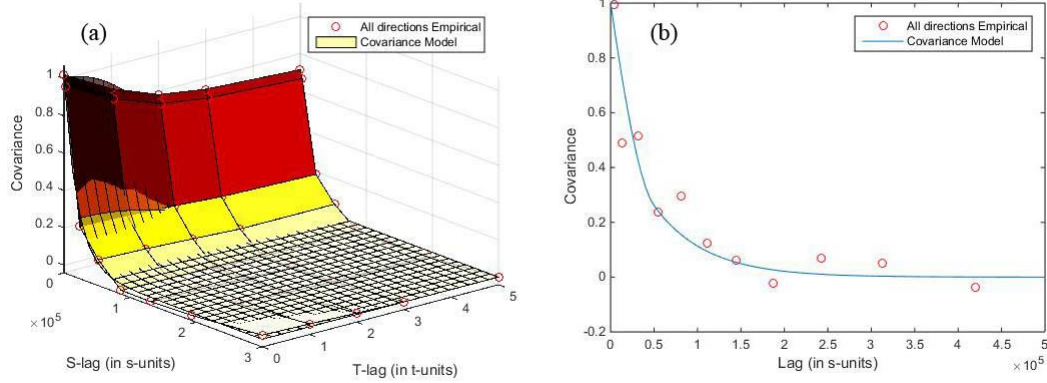


Figure S13: Plots of spatiotemporal empirical covariances and the fitted theoretical model in (a) the $R^2 \times T$ domain and (b) the R^2 domain with annual HRFS incidence.

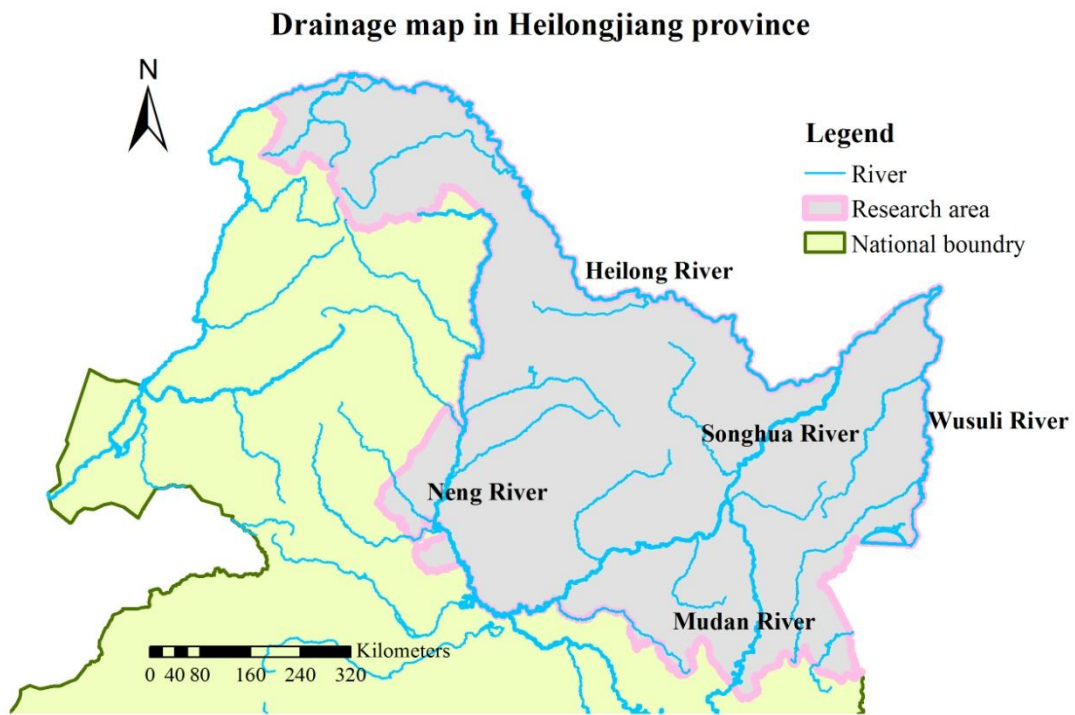


Figure S14: Drainage map in Heilongjiang province.

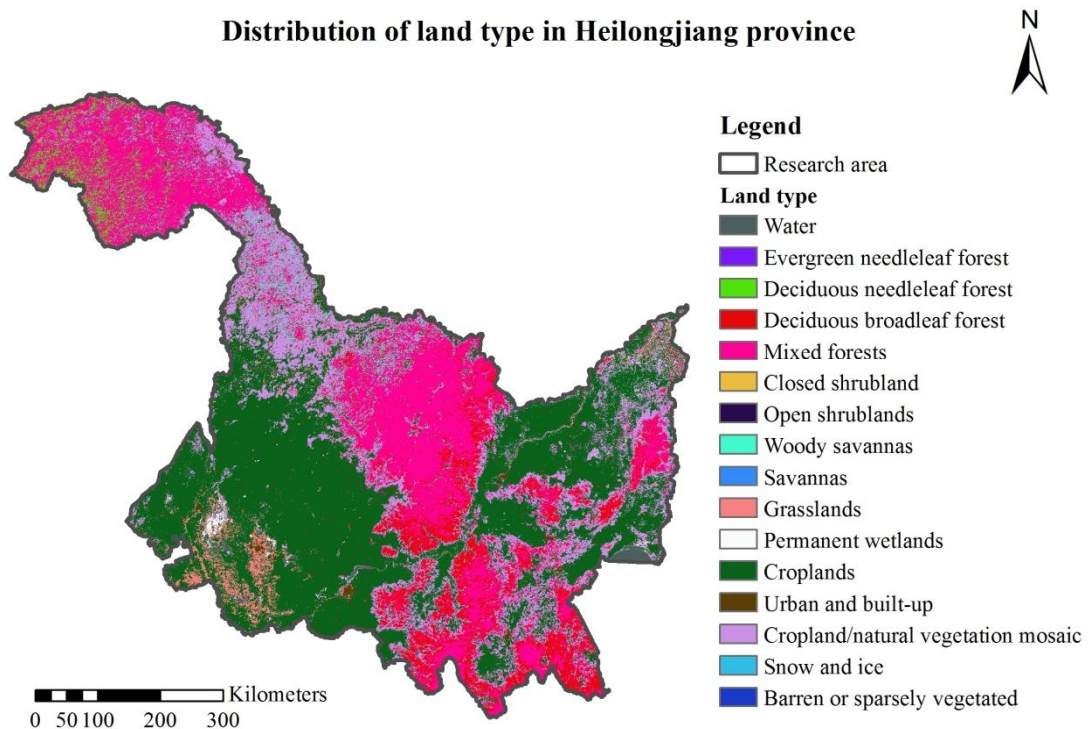


Figure S15: Distribution of land type in Heilongjiang province.