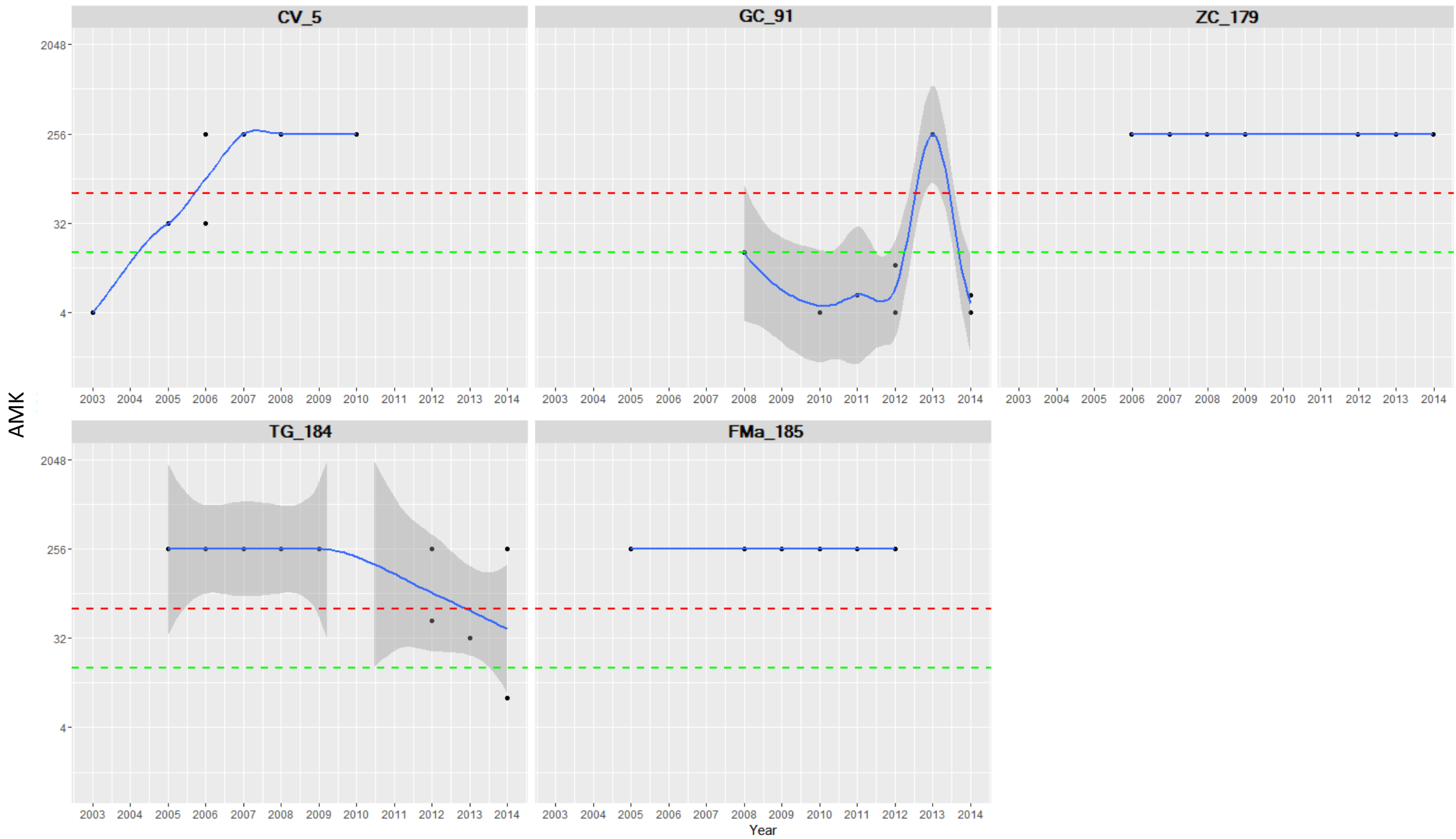


Supplementary Figure 7a. Temporal trend of Amikacin MIC values in selected STs. Dotted lines indicate breakpoint-MIC for resistance (red) and susceptibility (green), according to CLSI-guidelines.



Supplementary Figure 7b. Temporal trend of Amikacin MIC values in selected «ST-patient» combinations. Dotted lines indicate breakpoint-MIC for resistance (red) and susceptibility (green), according to CLSI-guidelines.