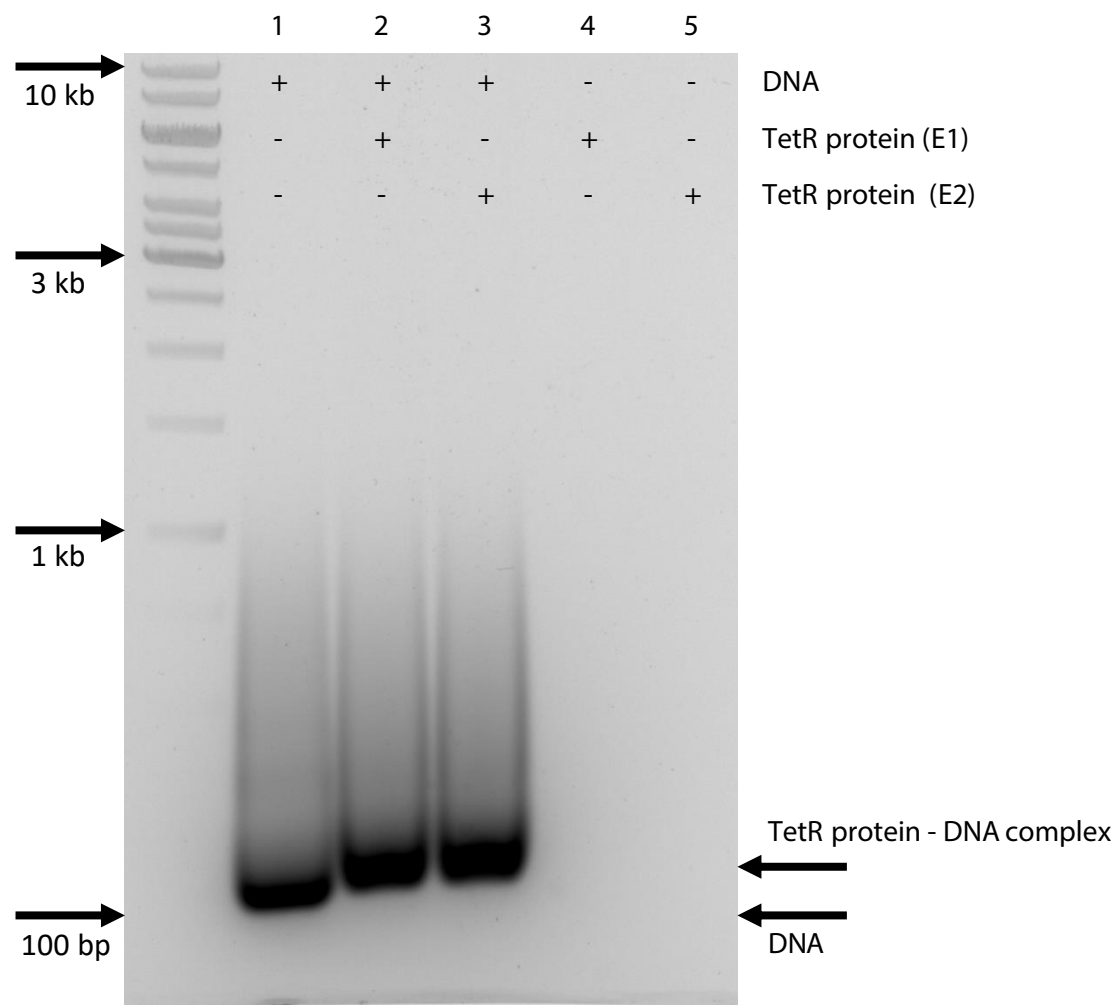
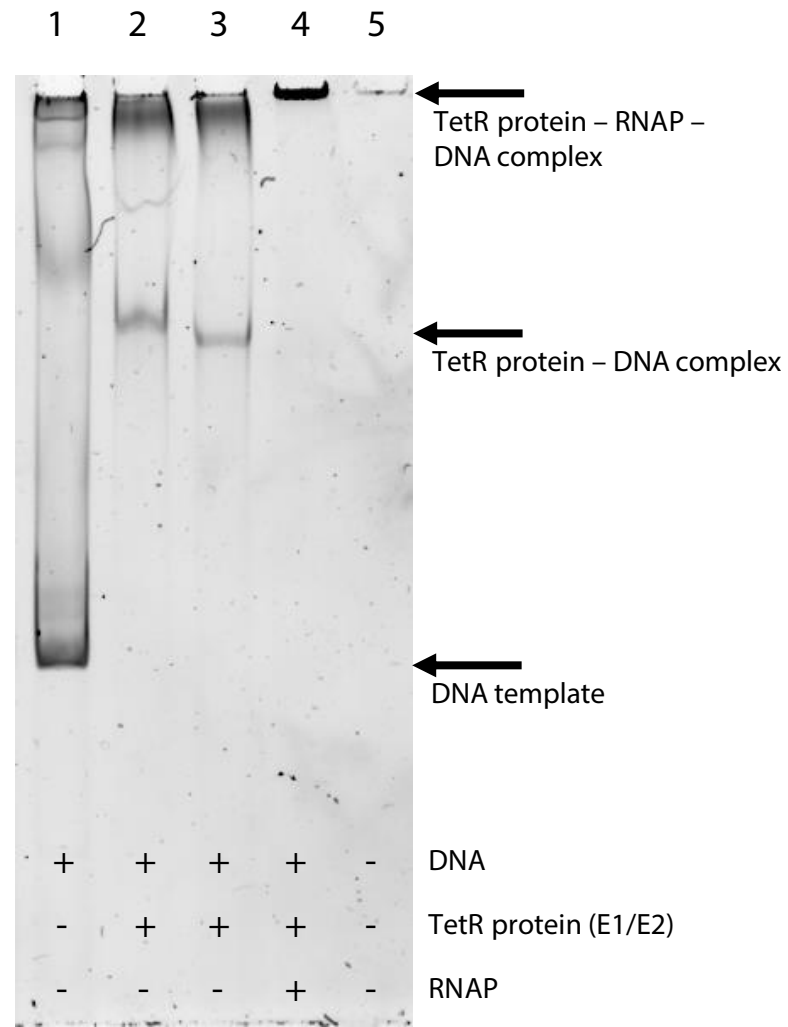


A**B**

Supplementary Figure 2. EMSA experiments of DNA-protein interaction of the TetR-family protein (CAETHG_0459) and the new promoter motif (P_{cauto}) using gel electrophoresis. (A) EMSA in 1 % agarose gel. Two different TetR-family protein (CAETHG_0459) extracts were tested (E1, E2). The first lane corresponds to a 1 kb gene ruler. (B) EMSA in 7.5 % polyacrylamide gel. The combination of proteins and DNA is shown for each lane: present (+), absent (-). See Methods for experimental details.