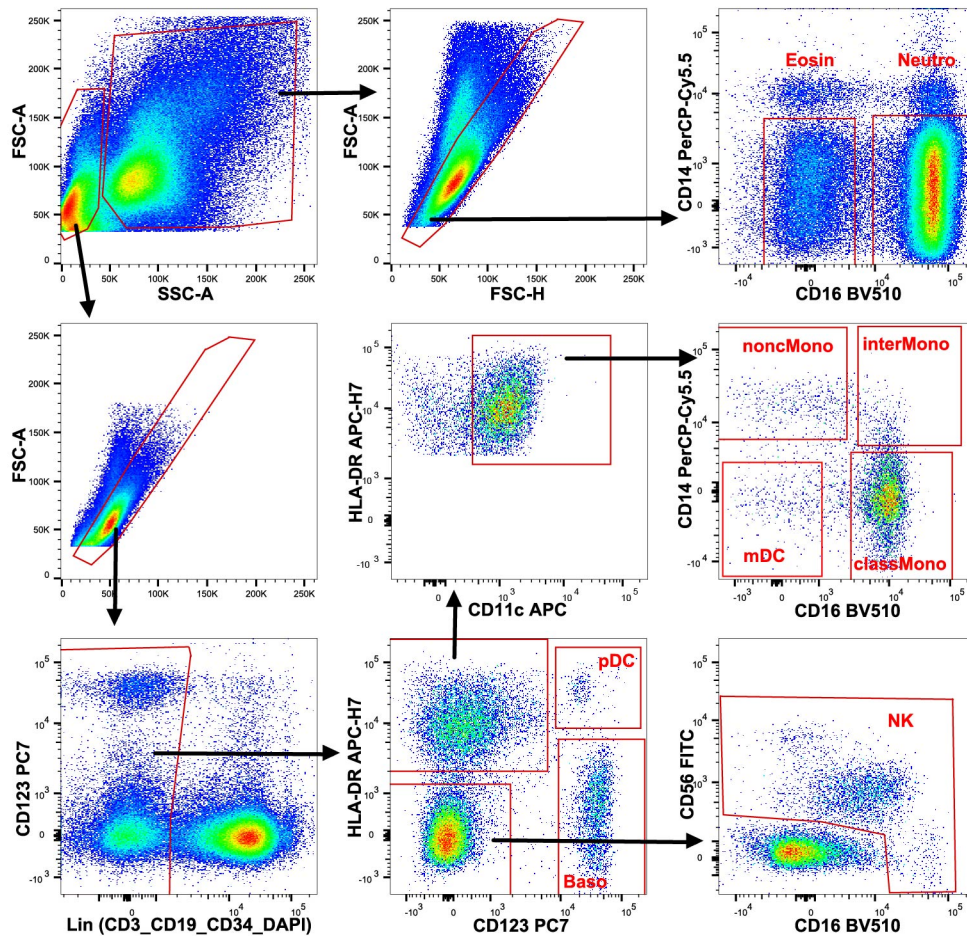


**Suppl Figure 1.**



**Gating strategy and definition of innate cell types in blood.** Eosinophils and neutrophils were defined within the  $FSC^{hi}SSC^{hi}$  gate and following exclusion of doublets, gated on the  $CD14^{-}CD16^{dim}$  (eosin) and  $CD14^{-}CD16^{hi}$  (neutro) phenotypes. Within the  $FSC^{dim}SSC^{dim}$  gate, single cells were selected and expression of lineage markers and DAPI was excluded, prior to definition of  $CD123^{+}HLA-DR^{-}$  basophils and  $CD123^{+}HLA-DR^{+}$  plasmacytoid (p)DCs. NK cells were defined as  $CD16$  and/or  $CD56^{+}$  within the  $CD123^{-}HLA-DR^{-}$  gate. Finally,  $HLA-DR^{+}CD11c^{+}$  cells were subdivided into  $CD14^{+}CD16^{-}$  classical monocytes,  $CD14^{+}CD16^{+}$  intermediate monocytes,  $CD14^{-}CD16^{+}$  non-classical monocytes, and  $CD14^{-}CD16^{-}$  DCs.