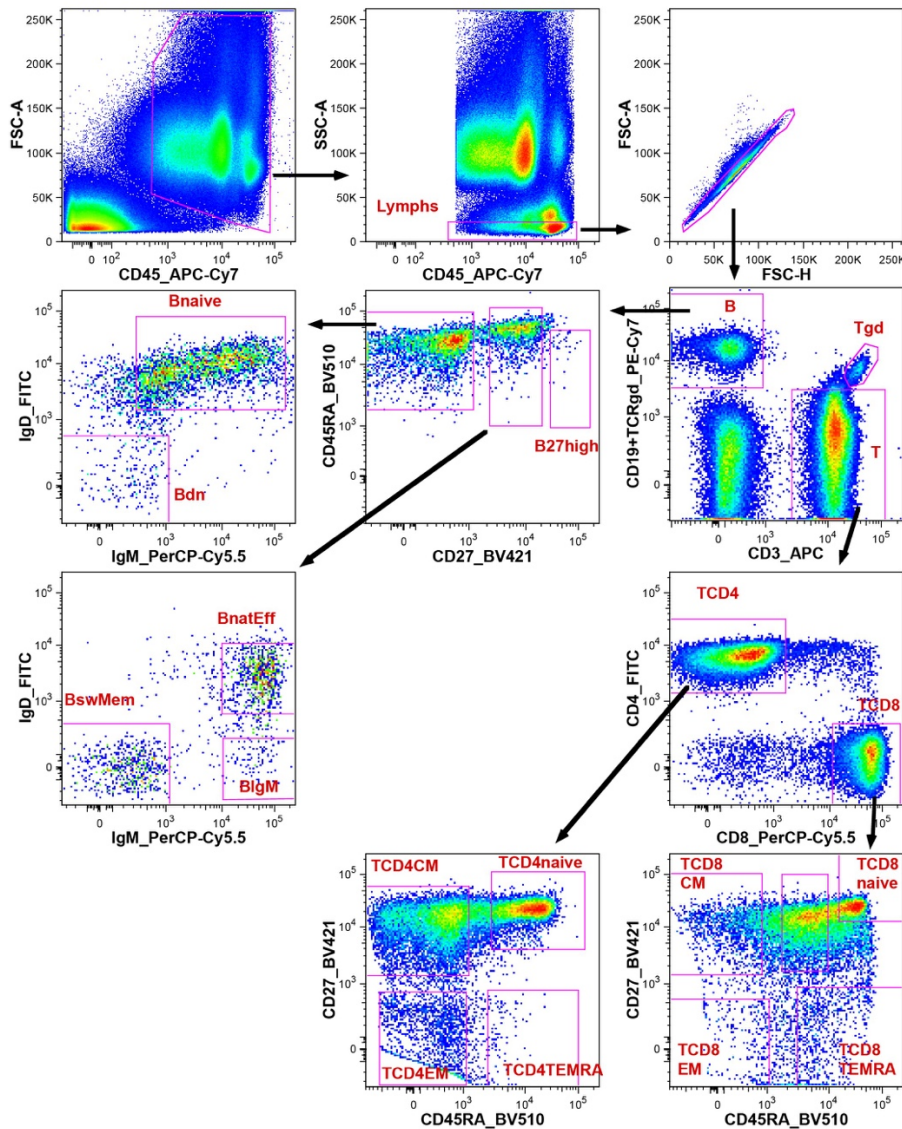


**Suppl Figure 2.**



**Gating strategy and definition of B- and T-cell subsets in blood.**  $FSC^{dim}SSC^{dim}CD45^{+}$  lymphocytes were gated prior to exclusion of doublets. Subsequently,  $CD19^{+}$  B cells were defined, as well as  $CD3^{+}TCR\gamma\delta^{+}$  T cells and  $CD3^{+}TCR\gamma\delta^{-}$  T cells. Within  $CD19^{+}$  B cells, the following subsets were defined:  $CD27^{-}IgM^{+}IgD^{+}$  naive B cells,  $CD27^{-}IgM^{-}IgD^{-}$  B cells,  $CD27^{+}IgM^{+}IgD^{+}$  natural effector,  $CD27^{+}IgM^{+}IgD^{-}$  IgM-only, and  $CD27^{+}IgM^{-}IgD^{-}$  Ig-switched memory B cells.  $CD3^{+}TCR\gamma\delta^{-}$  T cells were subdivided into the CD4 and CD8 lineages, and within each,  $CD45RA^{+}CD27^{+}$  naive,  $CD45RA^{-}CD27^{+}$  central memory,  $CD45RA^{-}CD27^{-}$  effector memory, and  $CD45RA^{+}CD27^{-}$  effector memory RA T cells were defined.