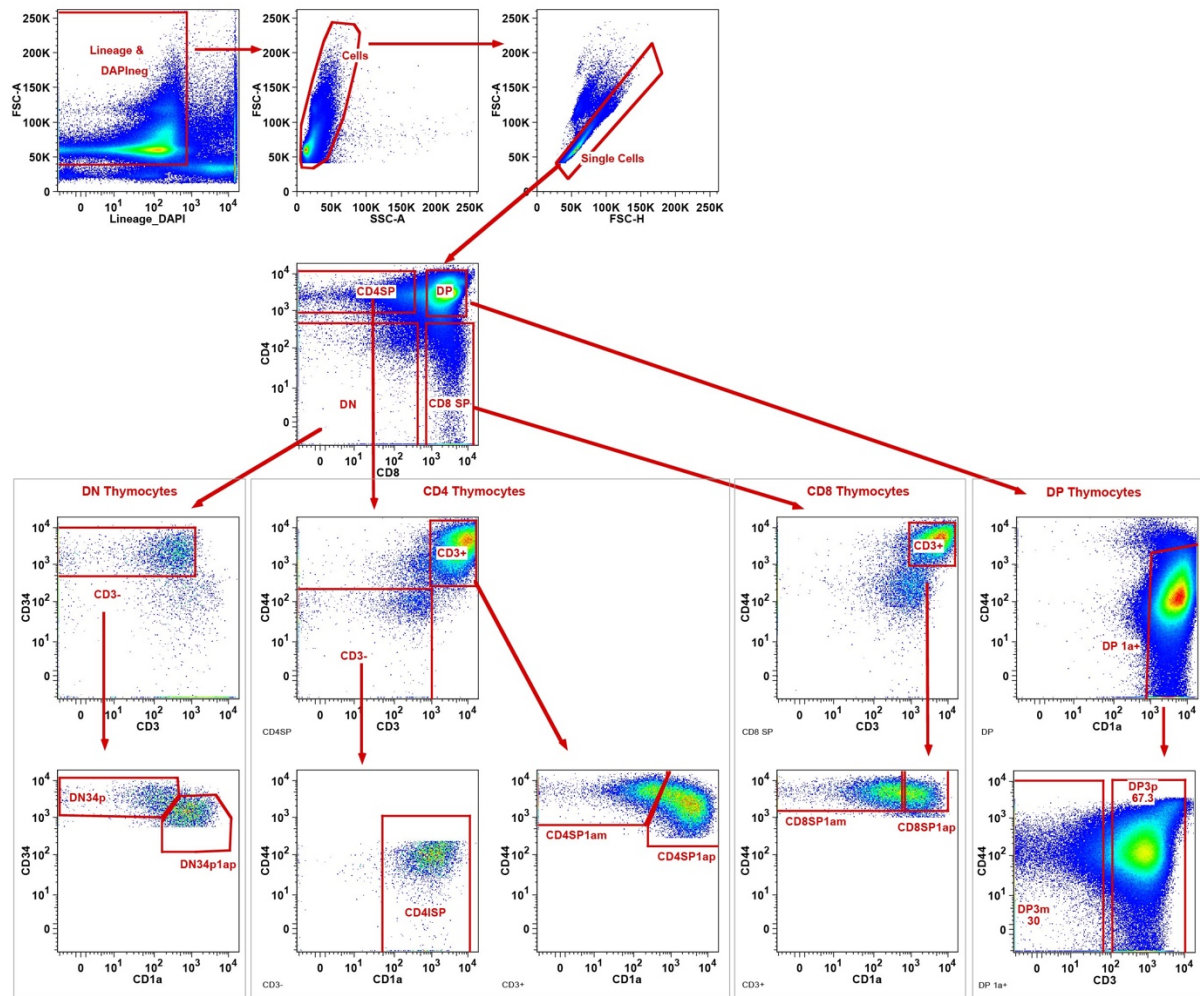


Suppl Figure 3.



Gating strategy and definition of thymocytes. $FSC^{dim}SSC^{dim}DAPI^{-}$ single thymocytes were selected, prior to subdivision based on CD4 and CD8 into four major stages: double negative (DN), single positive (SP) and double positive (DP). $CD3^{-}$ DN thymocytes were split into the earliest $CD34^{+}CD1a^{-}$ and subsequent $CD34^{+}CD1a^{+}$ subsets.

Within CD4 SP, $CD3^{-}CD1a^{+}$ immature single positive (ISP) thymocytes were defined. Double positive thymocytes were split into the earlier $CD3^{-}$ and later $CD3^{+}$ subsets. Finally, $CD3^{+}$ SP within both the CD4 and CD8 lineage were separated into the earlier $CD1a^{+}$ and later $CD1a^{+}$ subsets.