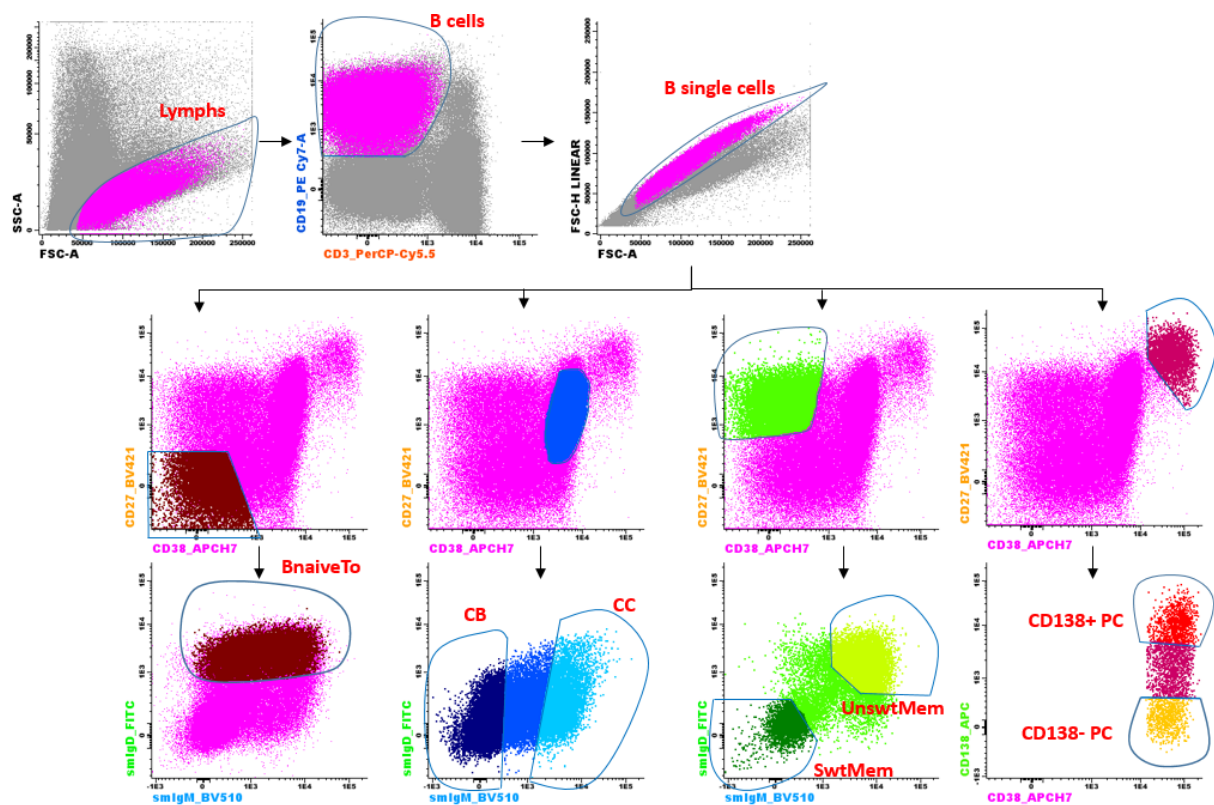


Suppl Figure 4.



**Gating strategy and definition of B cells in tonsil.**  $FSC^{dim}SSC^{dim}CD19^{+}$  B cells were gated prior to exclusion of doublets. Subsequently, Within  $CD19^{+}$  B single cells, the following subsets were defined:  $CD27^{-}CD38^{-}IgM^{+}IgD^{+}$  naive B cells Tonsils,  $CD27^{+}CD38^{-}IgM^{-}IgD^{-}$  centroblasts,  $CD27^{+}CD38^{+}IgM^{+}IgD^{-}$  centrocytes,  $CD27^{+}CD38^{-}IgM^{-}IgD^{-}$  switched memory B cells,  $CD27^{+}CD38^{-}IgM^{+}IgD^{+}$  unswitched memory B cells,  $CD27^{++}CD38^{++}CD138^{+}$  plasma cells and  $CD27^{++}CD38^{++}CD138^{-}$  plasma cells.