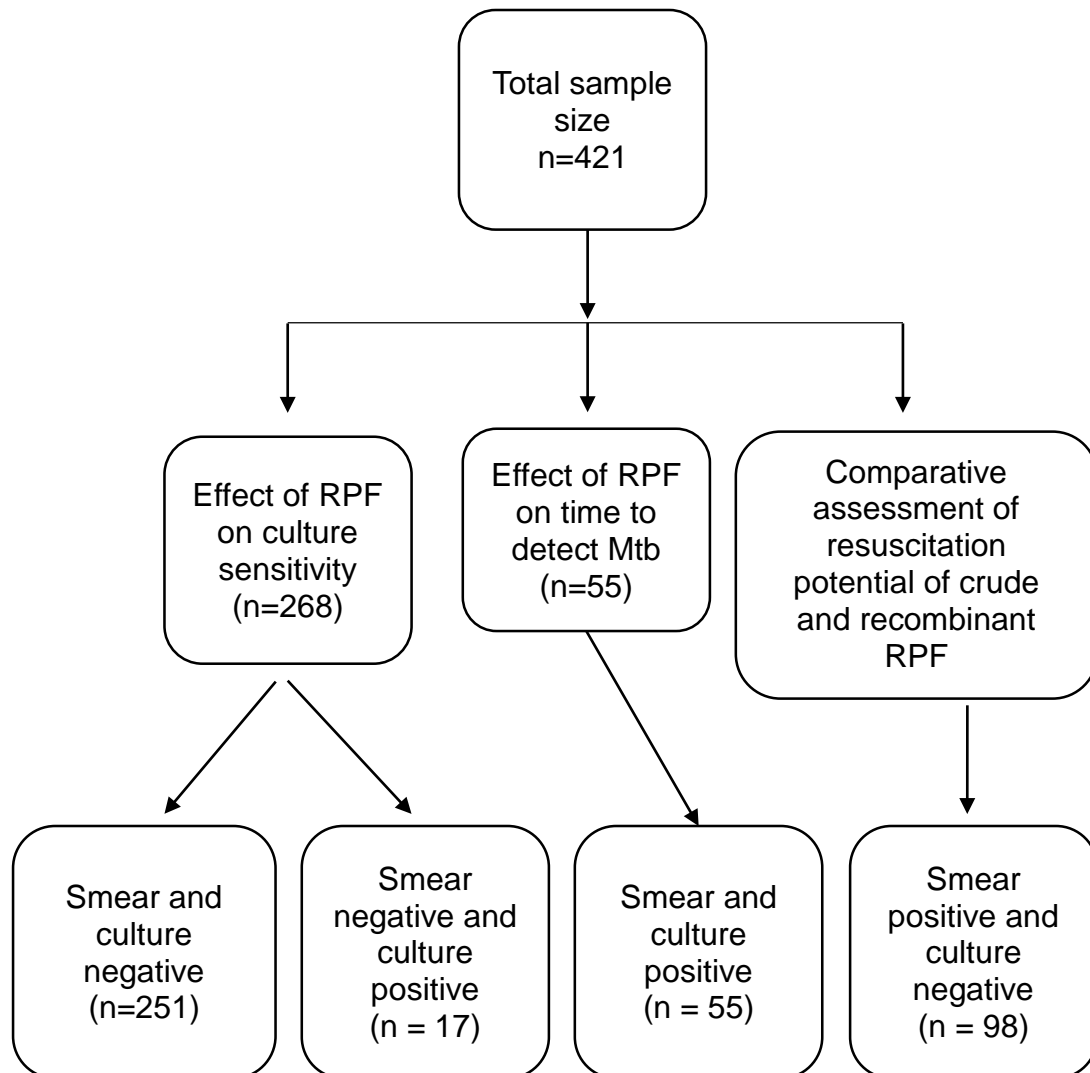


Supplementary Table-1: The WHO and IUATLD grading scale for AFB positivity of clinical specimens used in this study

<i>Reporting scale</i>	<i>Sample size (n) and % positivity^a</i>	<i>AFB seen (1 length of 40 fields)</i>	
		<i>200x</i>	<i>400x</i>
1+	36 (65.5)	30-299 AFB per 1 length	1-19 AFB per 1 length
2+	15 (27.2)	10-100 AFB per 1 field on average	20-199 AFB per 1 length
3+	4 (7.3)	>100 AFB per field on average	5-50 AFB per 1 field (20 fields on average)

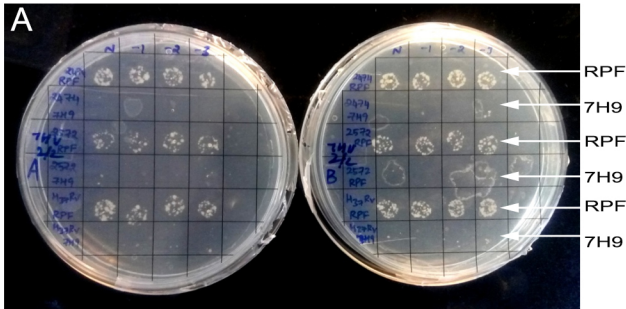
^a these samples were used to determine the effect of RPF on time to detect Mtb (n=55)

Supplementary Figure-1: Classification of sputum samples and the number of samples used in various assays



A**B**

A



B

