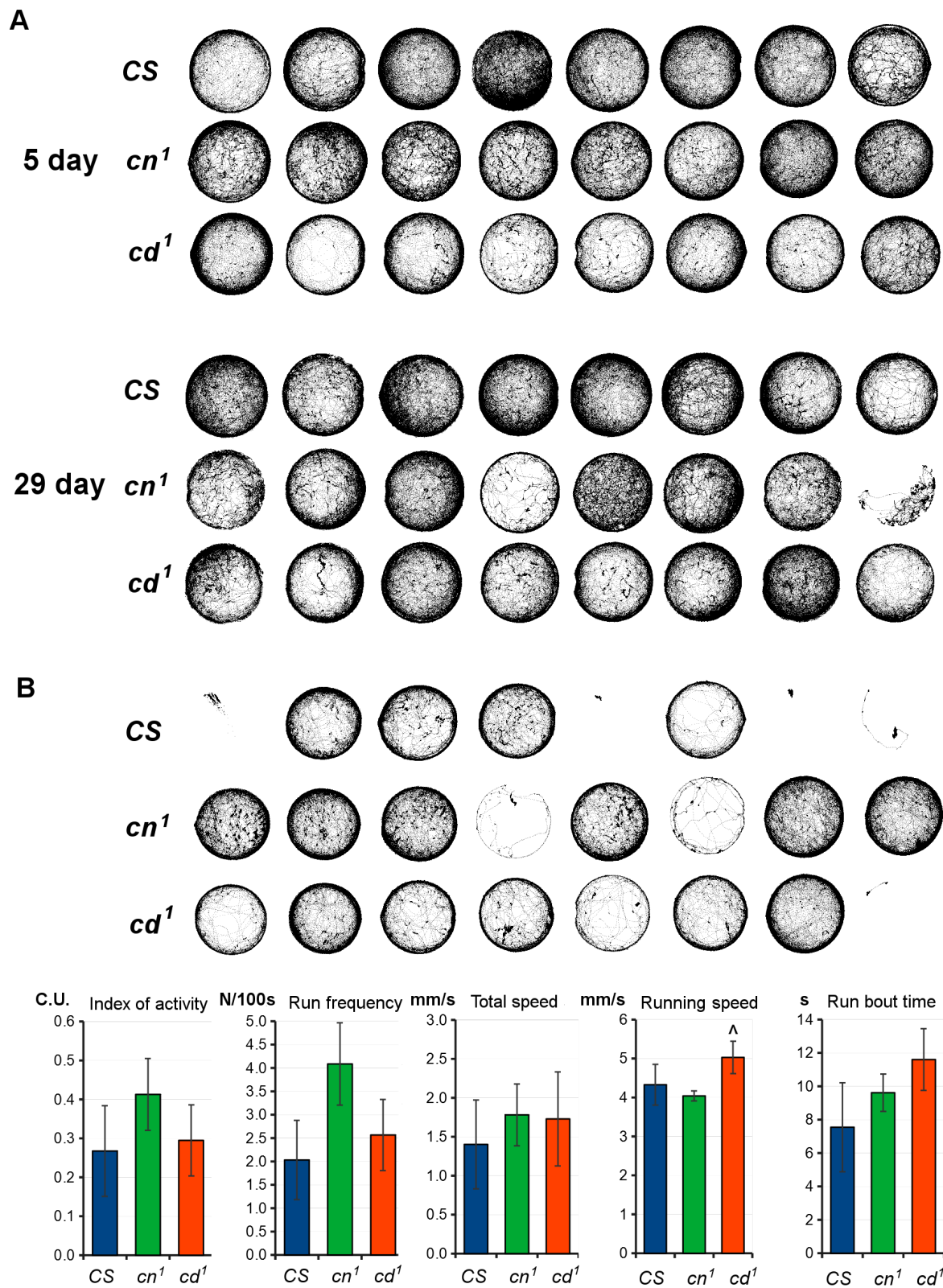
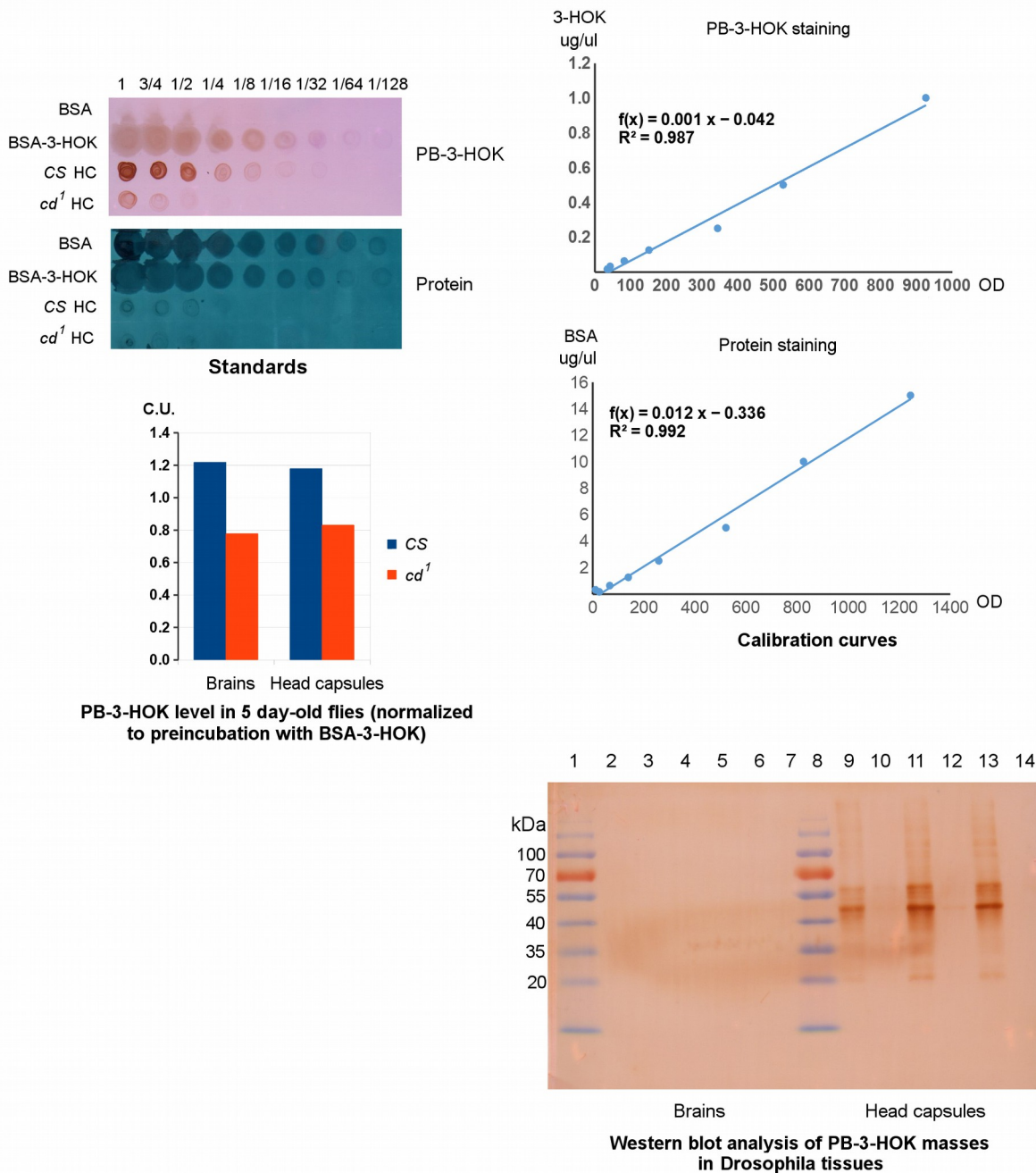


S1 Figure. Box-and-whisker charts for *Drosophila* SLA parameters.
 The charts are made with the help of <https://goodcalculators.com/box-plot-maker/>.
 The mean values are shown as grey circles.



S2 Figure. A. Fly tracks. B. Tracks and SLA parameters for 1-day-old flies studied under red light. ^{*} *cd¹* difference from *cn¹* (two-sided *t*-test; *n* = 8, *p* < 0.05).



S3 Figure. Dot blot and western-blot analysis of PB-3-HOK in Drosophila brains and head capsules. Dot blot analysis: Standards: 1 – 1/128 is a serial dilution, 1X concentrations: 2 ug/ul for 3-HOK used in conjugation with BSA, 20 ug/ul for BSA. PB-3-HOK is 3-HOK conjugated to BSA (BSA-3-HOK) or Drosophila proteins. Protein is total protein stained with amido black. For preincubation, 3.5 ul of antibodies and 10 ul of BSA-3-HOK conjugate were mixed; the difference in PB-3HOK level with and without preincubation is expressed in C.U. OD – integrated optical density, HC – head capsules. Western blot analysis: 1, 8: PageRuler Prestained Protein Ladder (ThermoFisher Scientific, #26616). Molecular masses are shown in kDa. 2 – 7: brains, 9 – 14: head capsules. 2, 9: CS 13 day; 3, 10: *cd¹* 13 day; 4, 11: CS 21 day; 5, 12: *cd¹* 21 day; 6, 13: CS 29 day; 7, 14: *cd¹* 29 day.