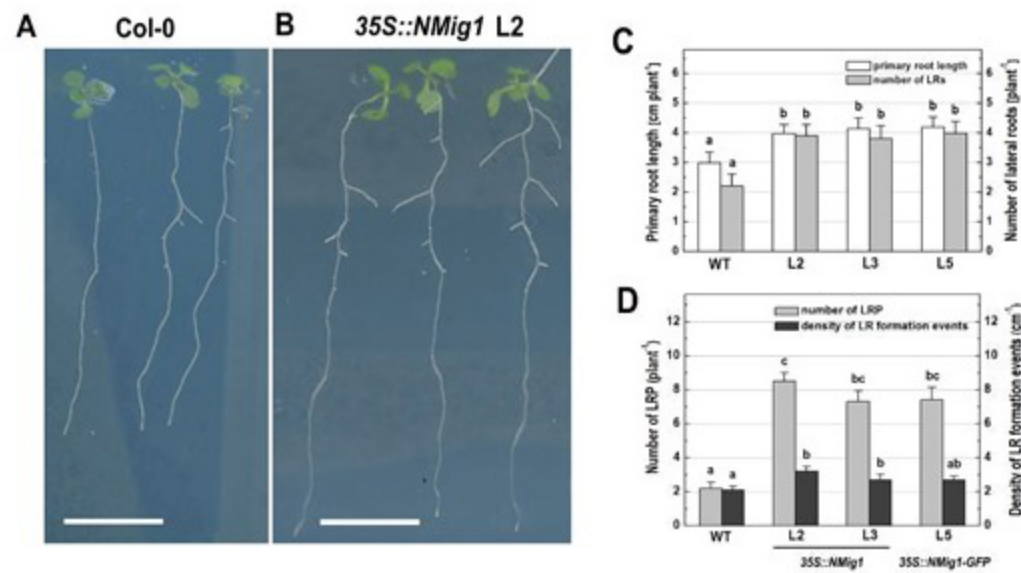
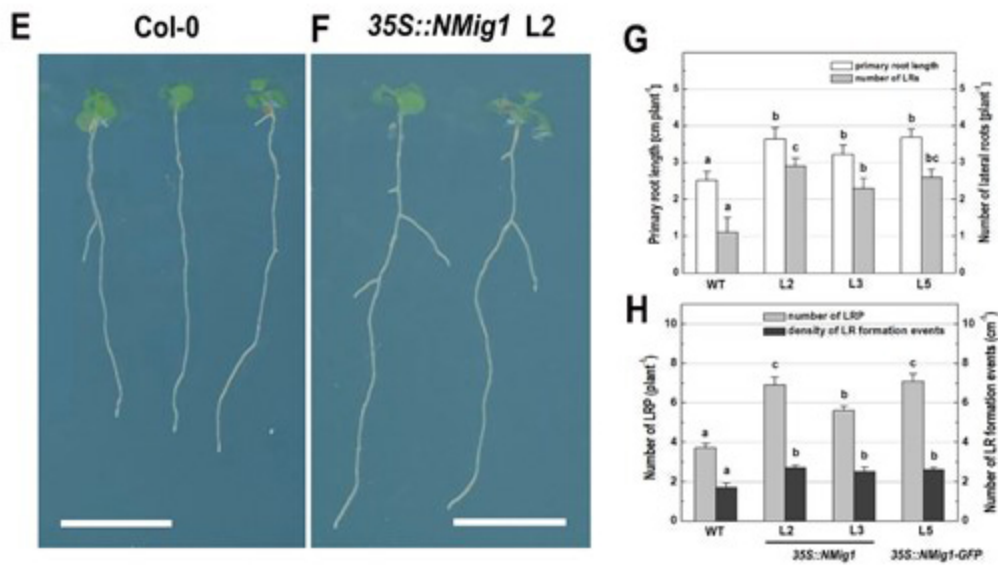


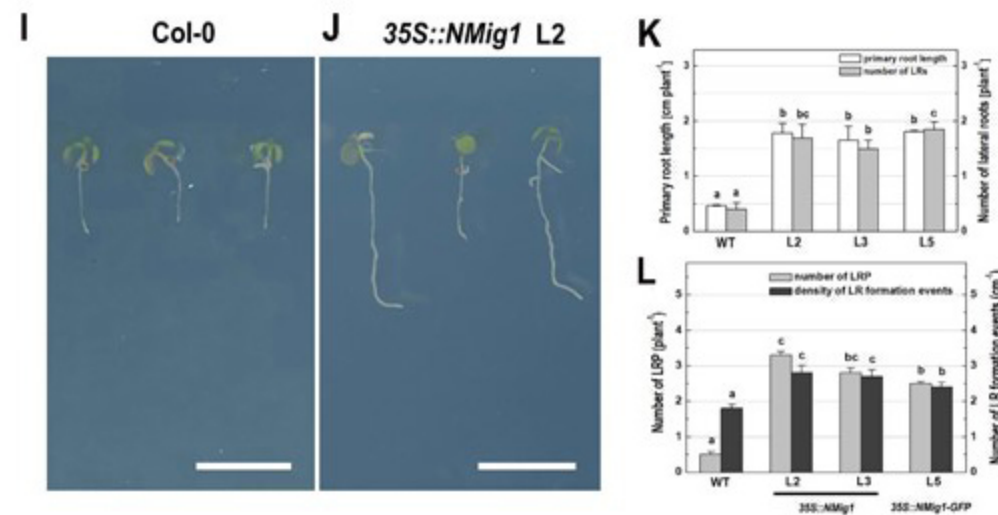
## Heat Shock



## Drought



## Salinity



**FIGURE S3.** Phenotypic differences in primary root growth and branching between the wild-type Col-0 (**A,E,I**) and transgenic lines overexpressing *NMig1* (**B,F,J**) under heat shock induced by exposure to 42°C for 1 h (**A-D**), drought stress induced by 150 mM sorbitol (**E-H**), and high salinity induced by 150 mM NaCl (**I-L**). The following root traits are evaluated: average length of the primary root and number of lateral roots (**C,G,K**); number of lateral root primordia and density of all lateral root formation events (**D,H,L**). The root traits are quantified in 10-day-old seedlings. Different lowercase letters indicate statistically significant difference ( $p \leq 0.05$ ). Scale bar = 1.0 cm