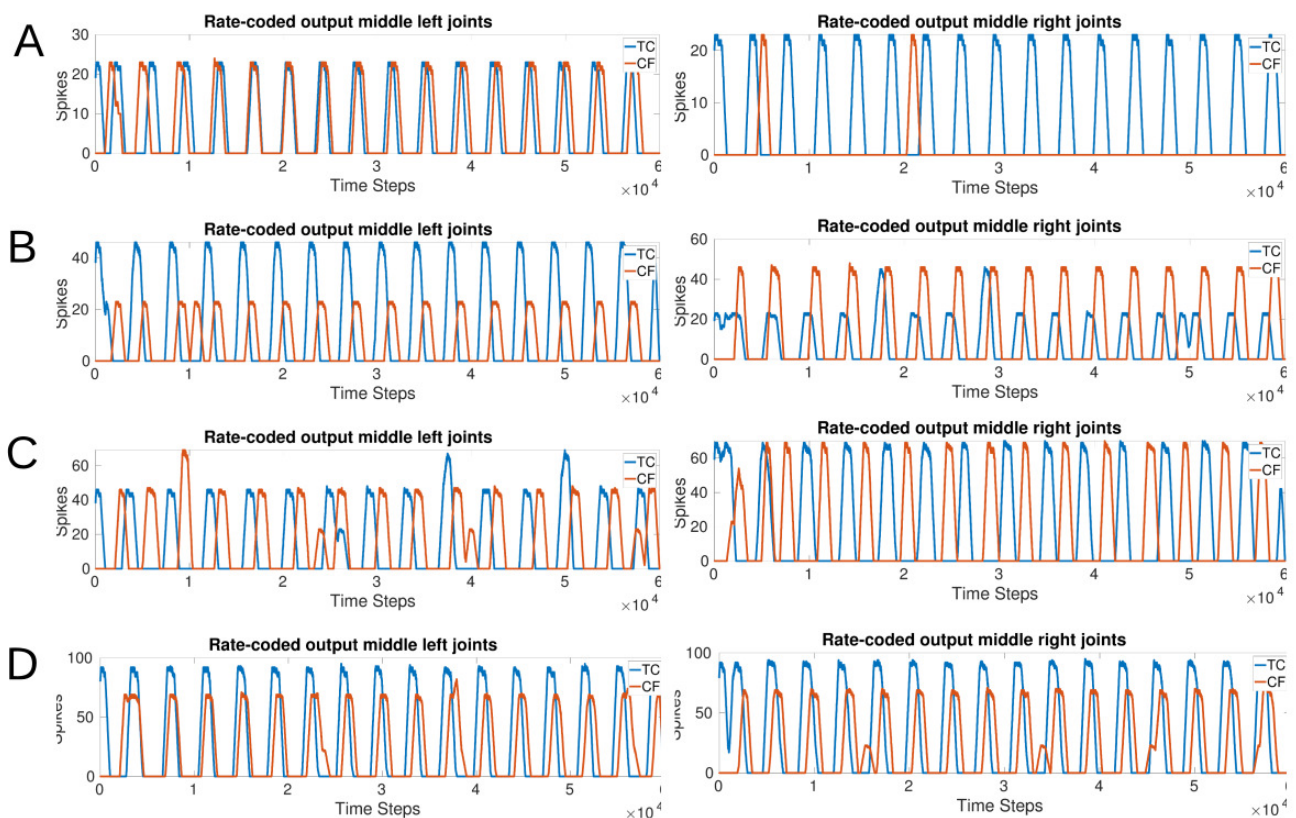


# Supplementary Material

## 1 SUPPLEMENTARY TABLES AND FIGURES

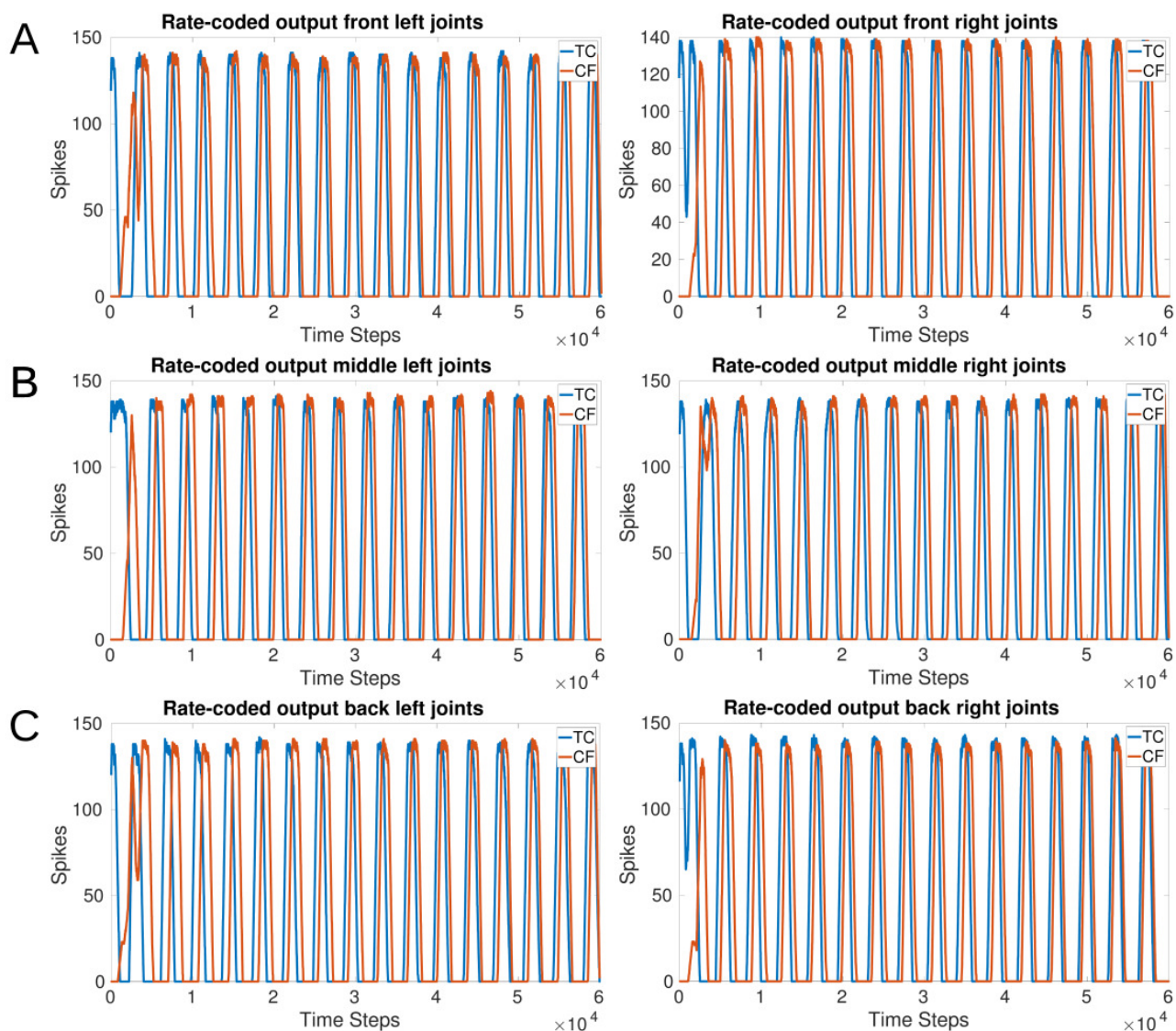
### 1.1 Figures

#### Rate-coded output for various sCPG population sizes



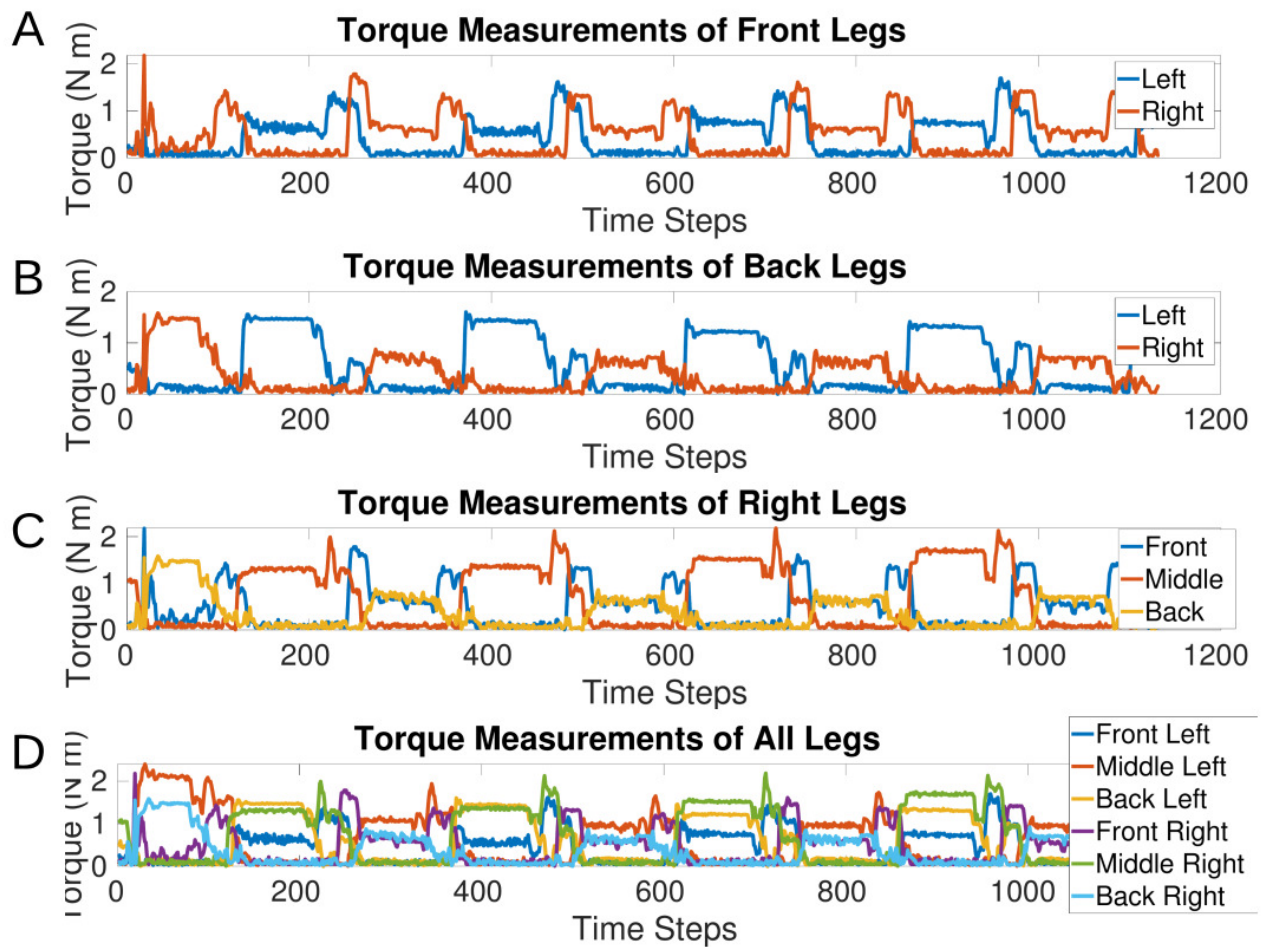
**Figure S1.** Rate-coded output for increasing population sizes. A: One neuron per population. B: Two neurons per population. C: Three neurons per population. D: Four neurons per population.

## Rate-coded output for 6-neuron sCPG population



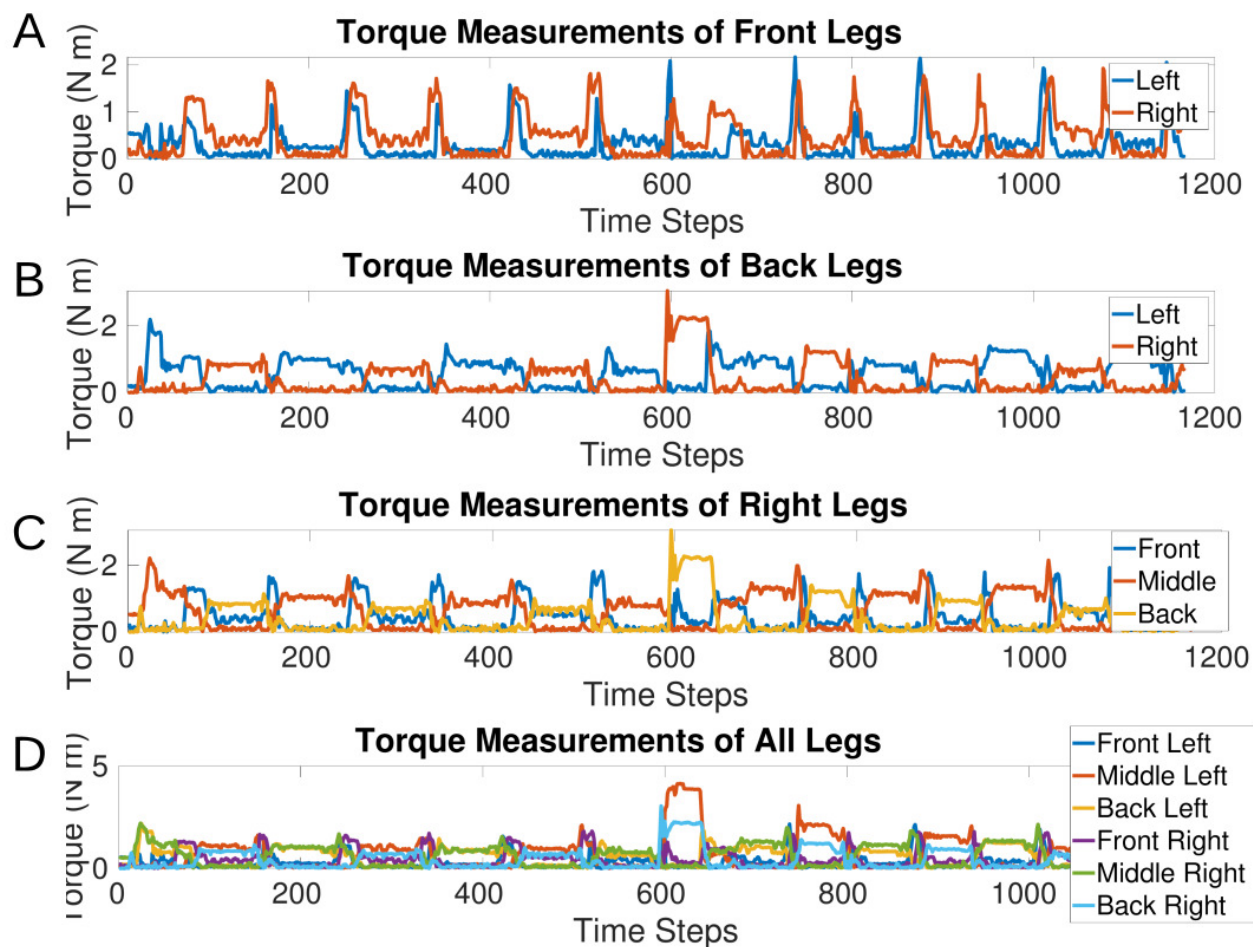
**Figure S2.** Rate-coded output for sCPGs with 6 neurons per population. A: Front legs. B: Middle legs. C: Back legs.

## Video of MORF walking

**Torque output for MORF walking at a single frequency**

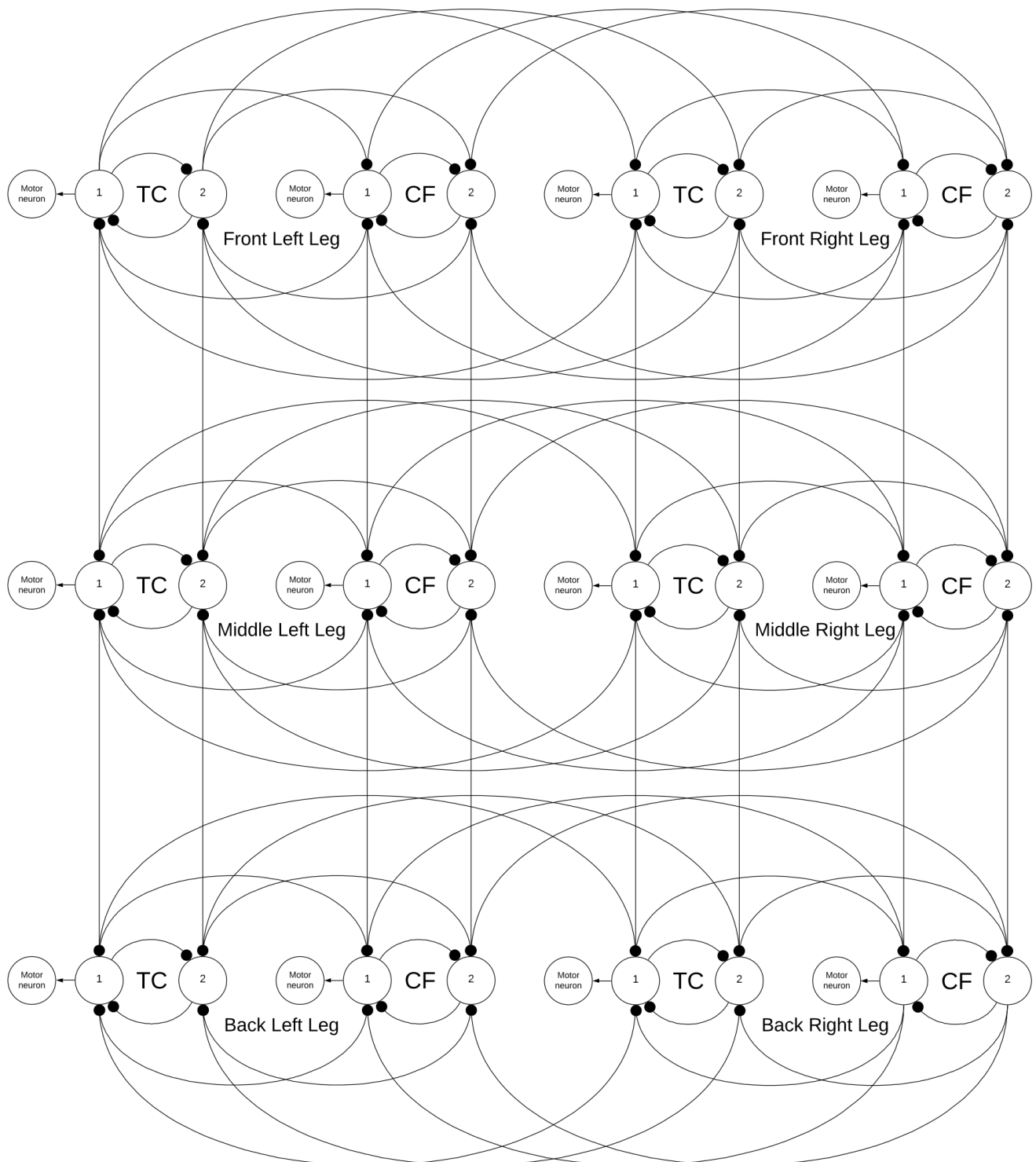
**Figure S3.** Converted torque measurement from Dynamixel motors when walking at a constant frequency.

## Torque output for MORF walking when switching between frequencies



**Figure S4.** Converted torque measurement from Dynamixel motors when switching from one frequency to another.

## Complete network of distributed sCPGs



**Figure S5.** Complete diagram showing all connections between individual neuron populations in the distributed network. The inter-segmental mutual inhibition connections are shown as a single connection with inhibition on either end to simplify the diagram.