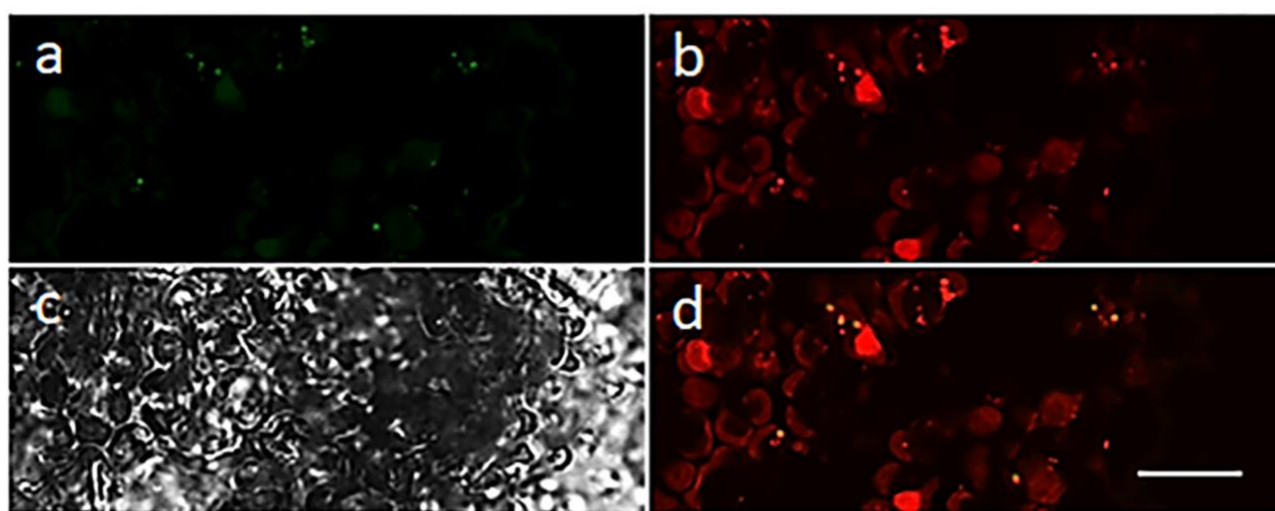
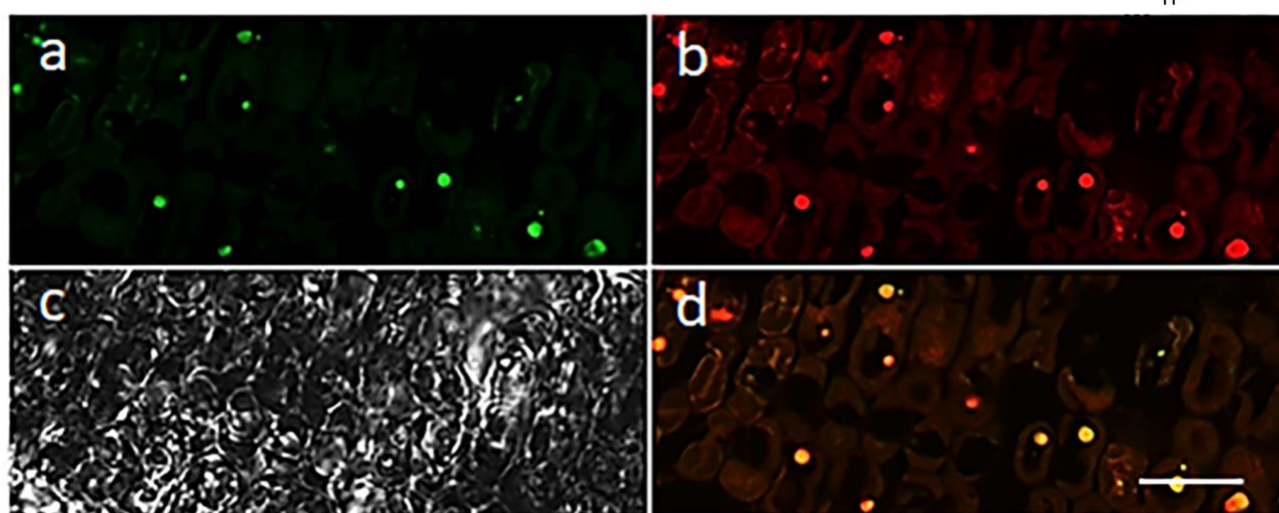


Supplementary Figure 5. Confocal laser scanning microscopy images of wild-type and transgenic lines rice leaves. Confocal laser scanning microscopy images of wild-type (WT) rice leaves and leaves from transgenic lines transformed with *AtCAB6*_{TP}-eGFP, *AtRCA*_{TP}-eGFP and *AtTOCC*_{TP}-eGFP fusions. The four panels show the individual signals for eGFP (a) chlorophyll autofluorescence (b), transmitted light (c) and the overlap of eGFP and chlorophyll autofluorescence (d). Scale bars, 20 μ m.

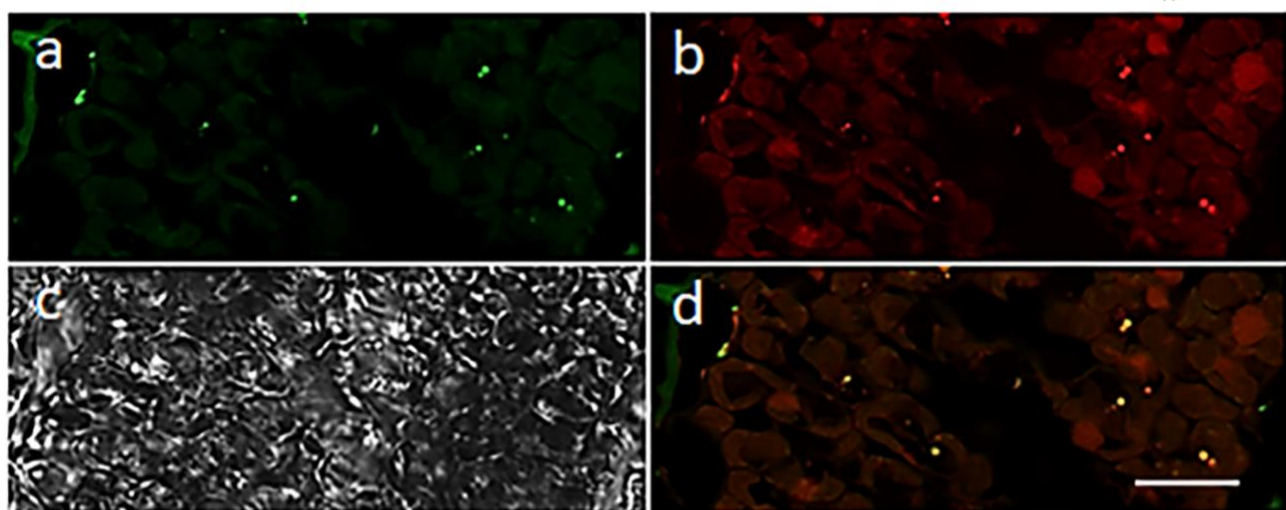
WT



*AtCAB6*_{TP}-eGFP



AtTOCC_{TP}-eGFP



AtRCA_{TP}-eGFP

