

Supplementary materials

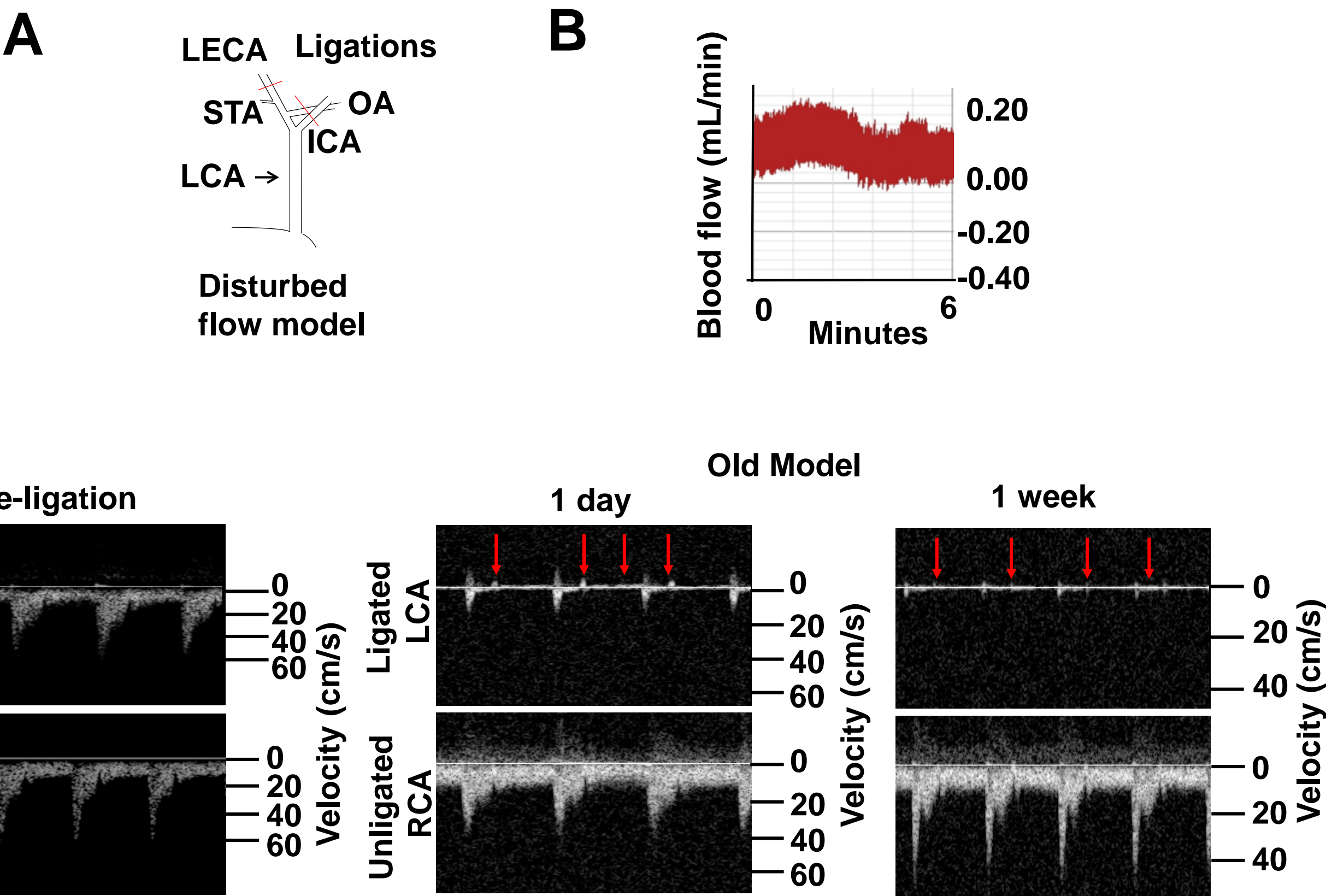
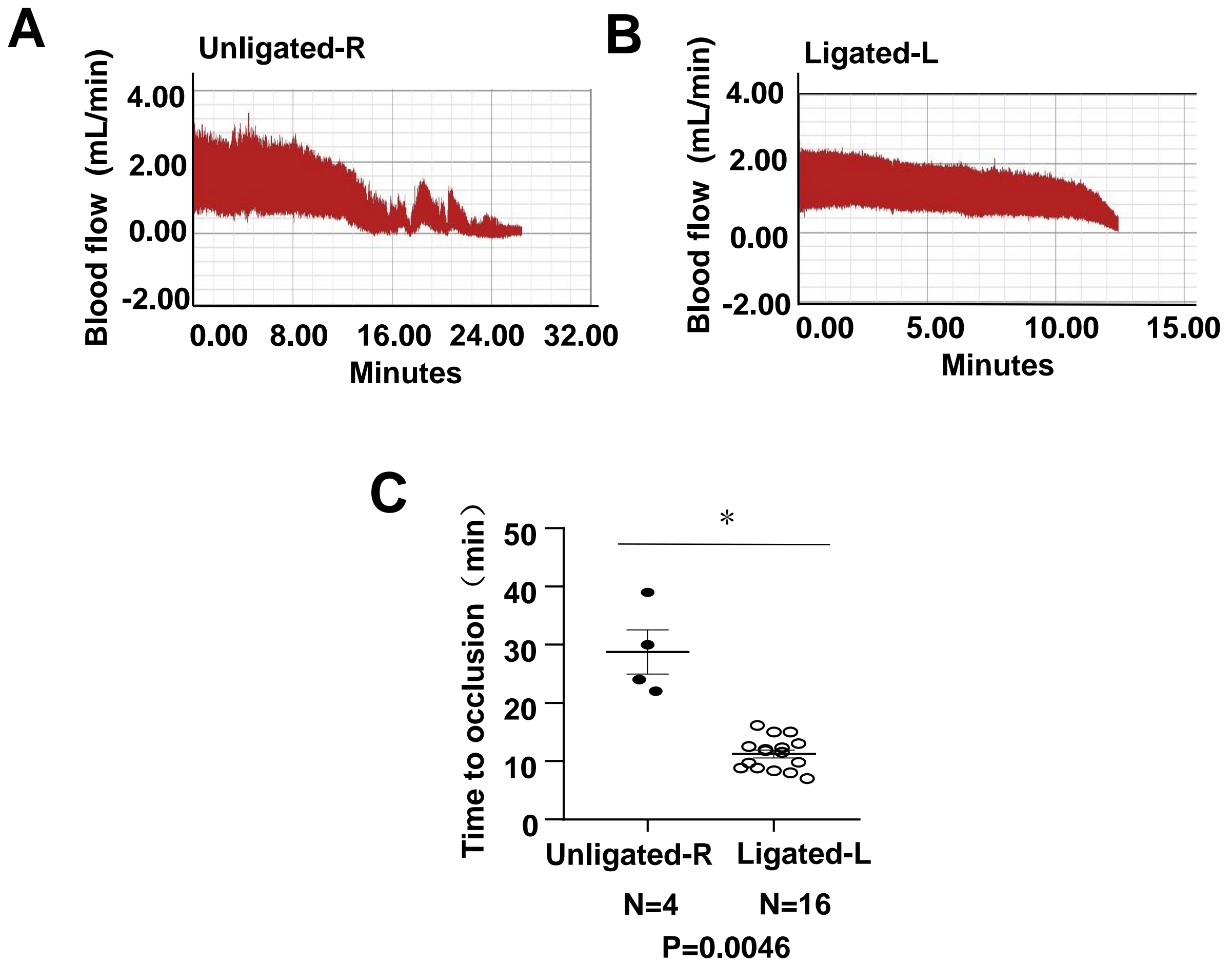


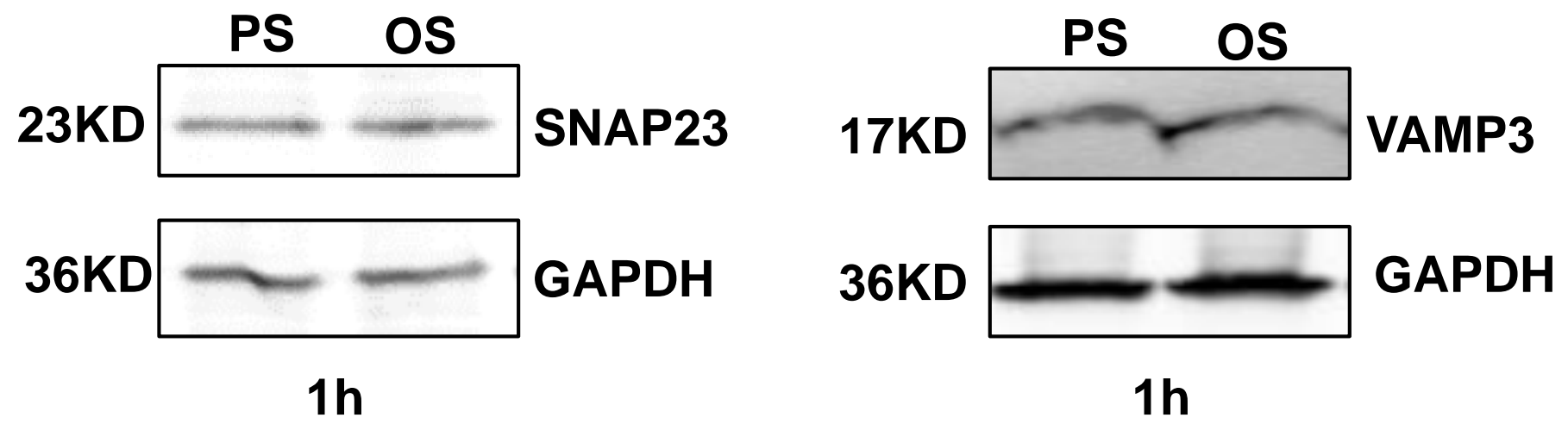
Figure S1. Measurements of blood flow in common carotid arteries in the partial ligation model.

## Supplementary materials



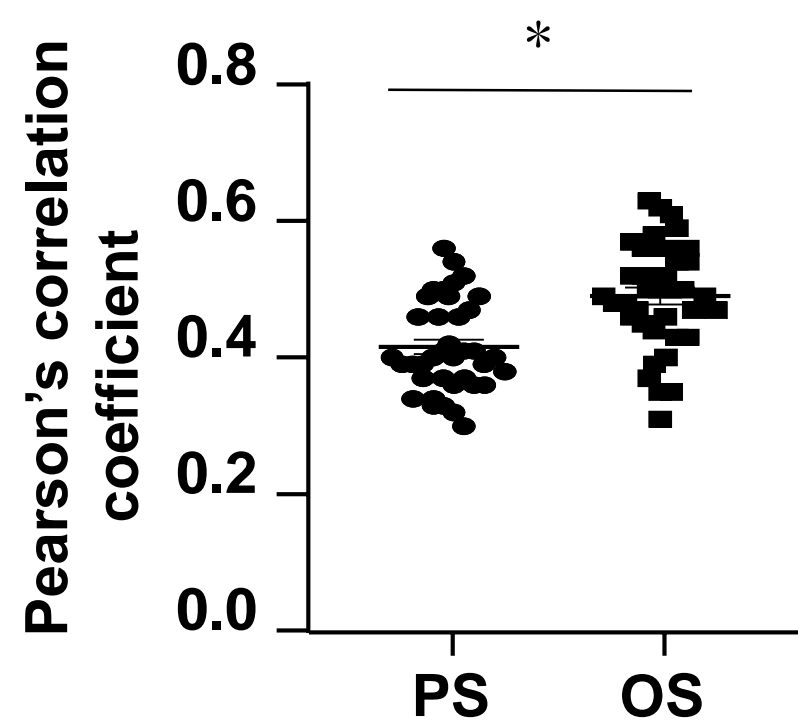
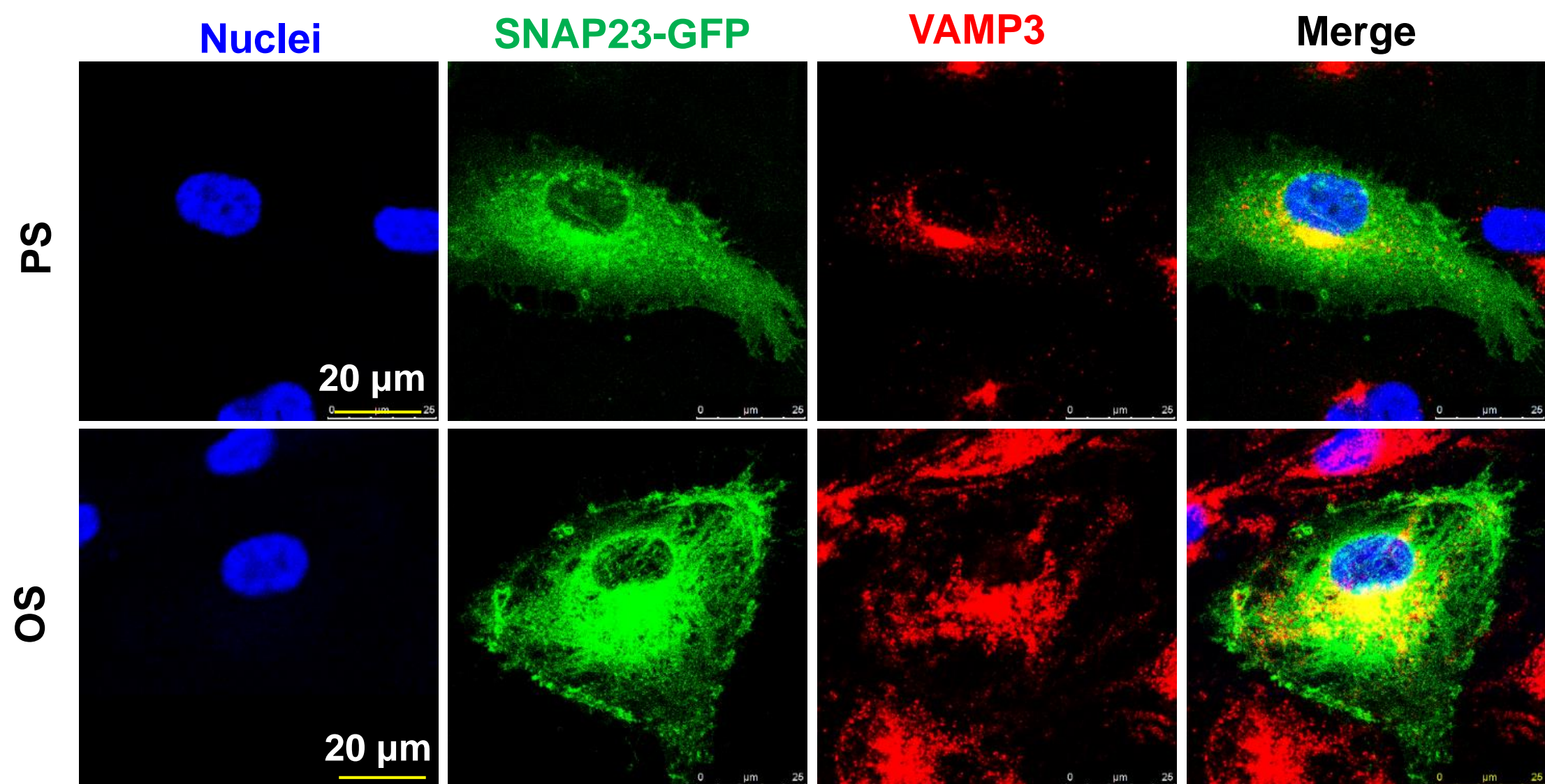
**Figure S2. Ligation of LECA significantly reduces the average time to occlusion.**

## Supplementary materials



**Figure S3. Influences of shear stress on the expressions of SNAP23 and VAMP3 in endothelial cells.**

## Supplementary materials



**Figure S4. Oscillatory shear stress enhances the colocalization of SNAP23 and VAMP3.**

Supplementary materials

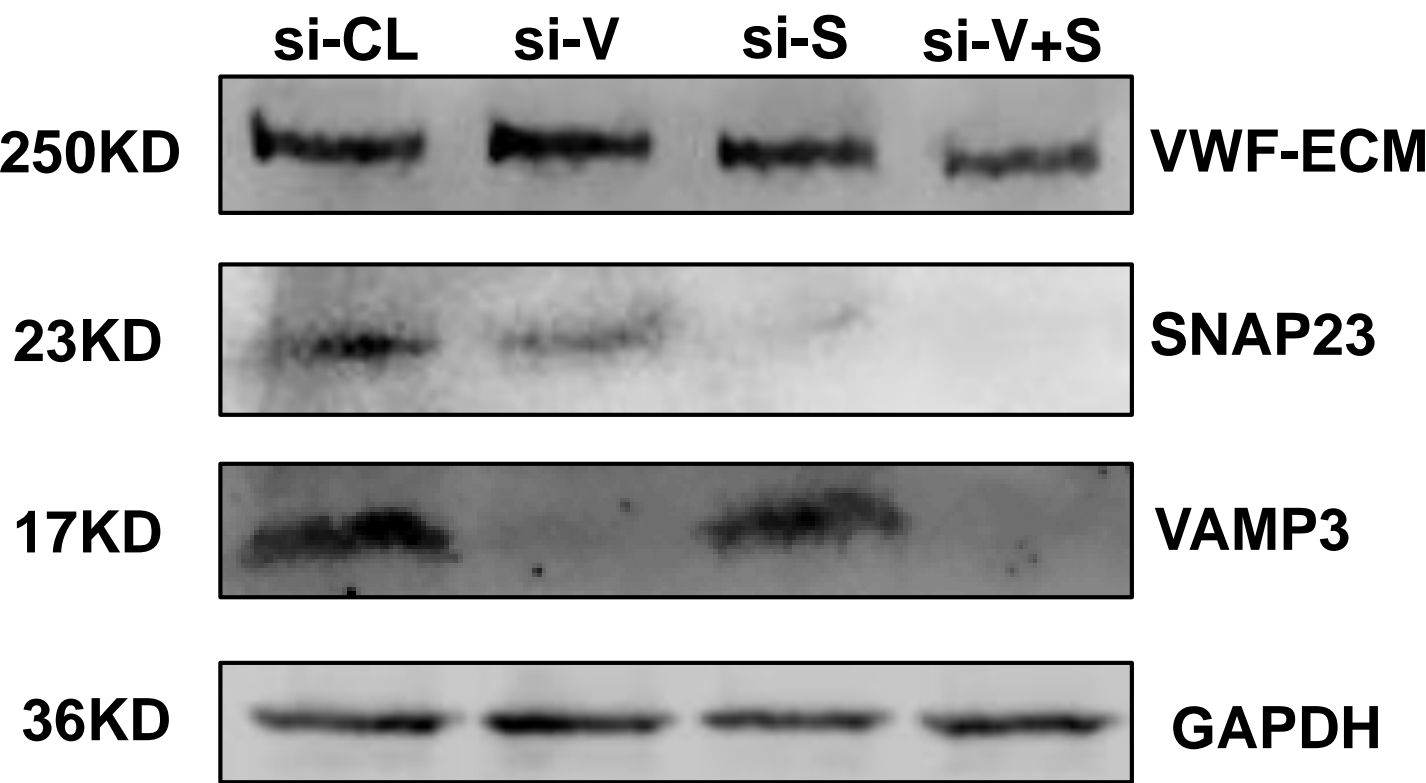
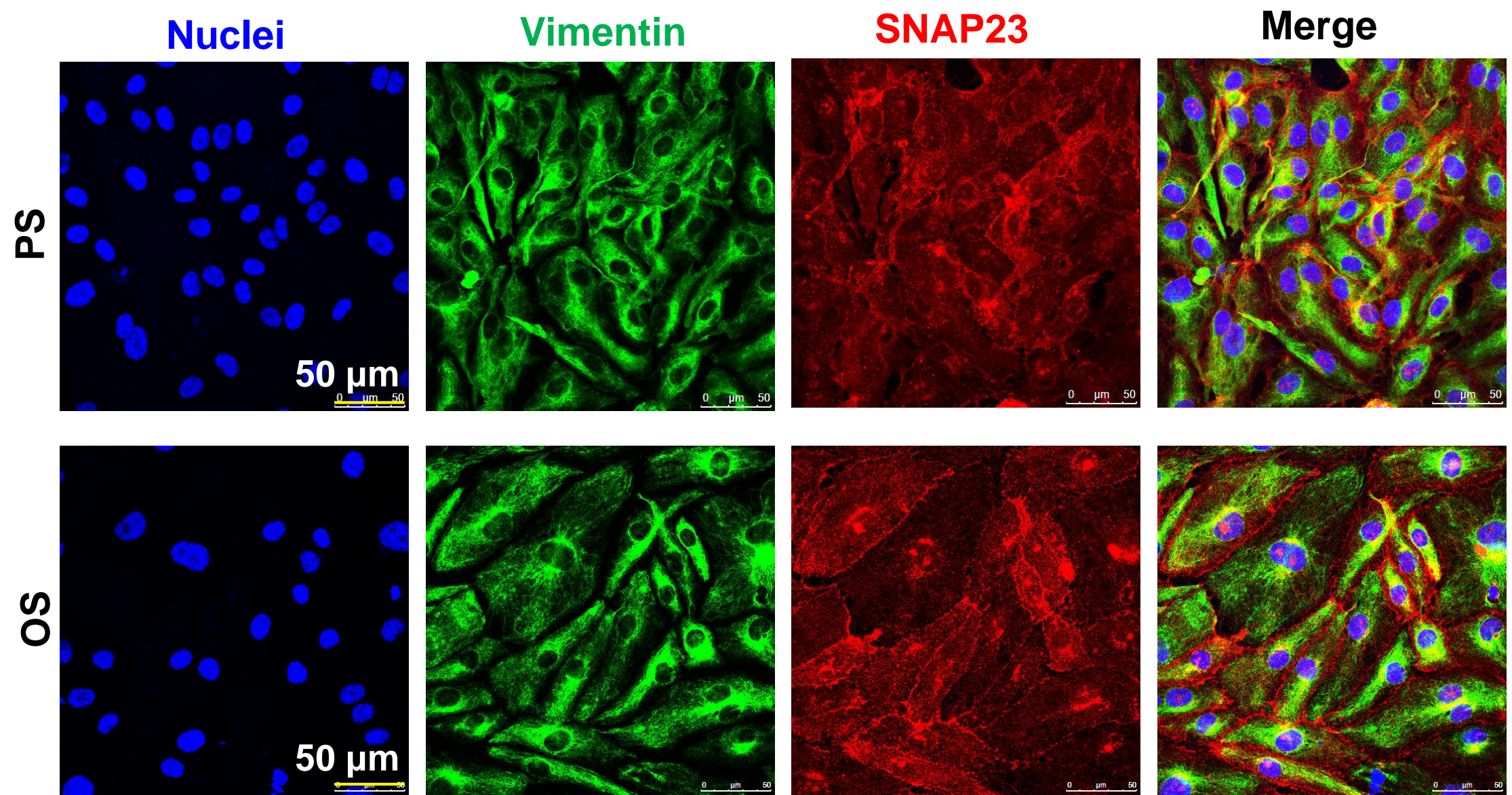


Figure S5. Knockdown of VAMP3 and SNAP23 inhibits VWF secretion.



## Supplementary materials

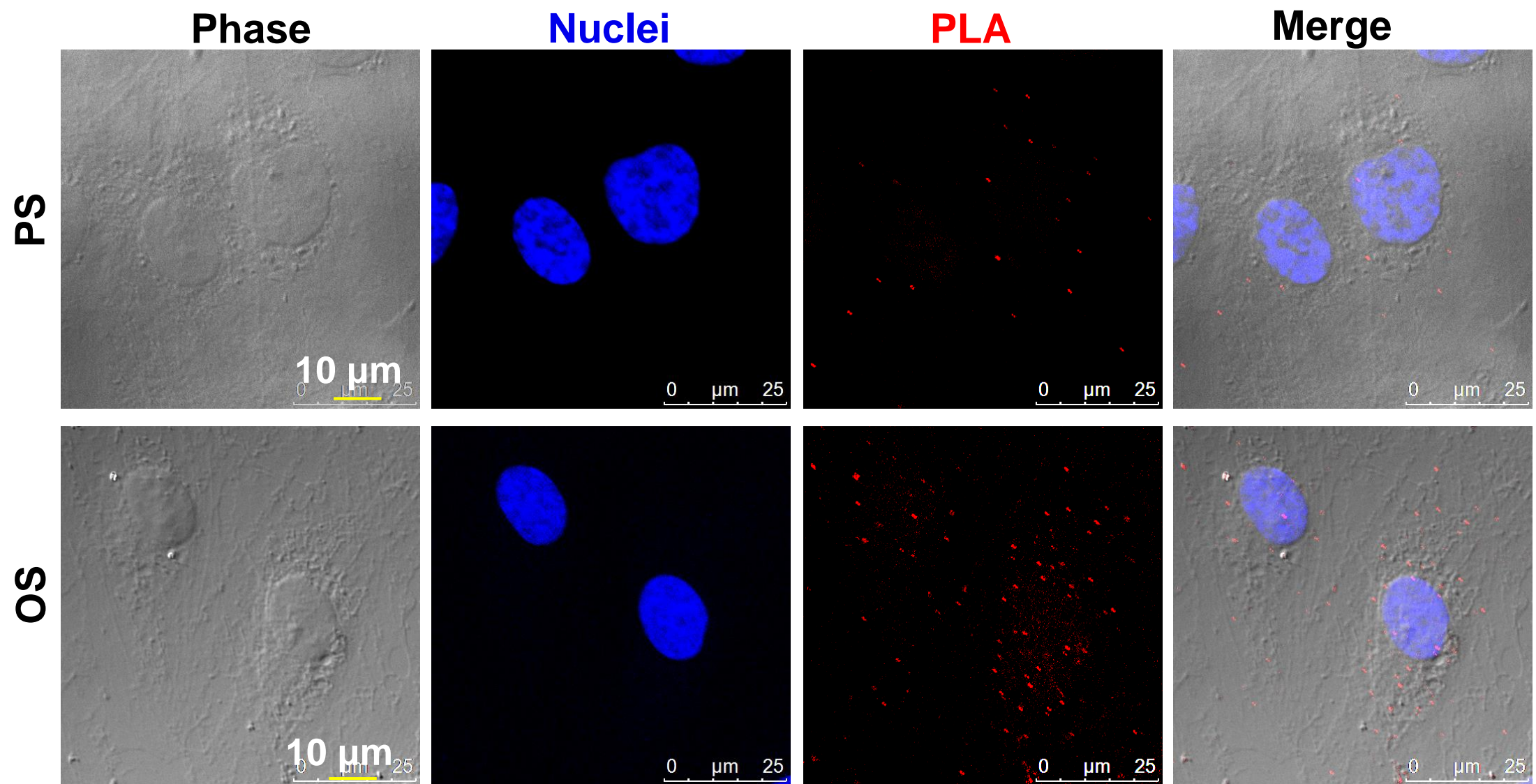


**Figure S6. Effect of PS or OS on colocalization of SNAP23 and vimentin in endothelial cells.**

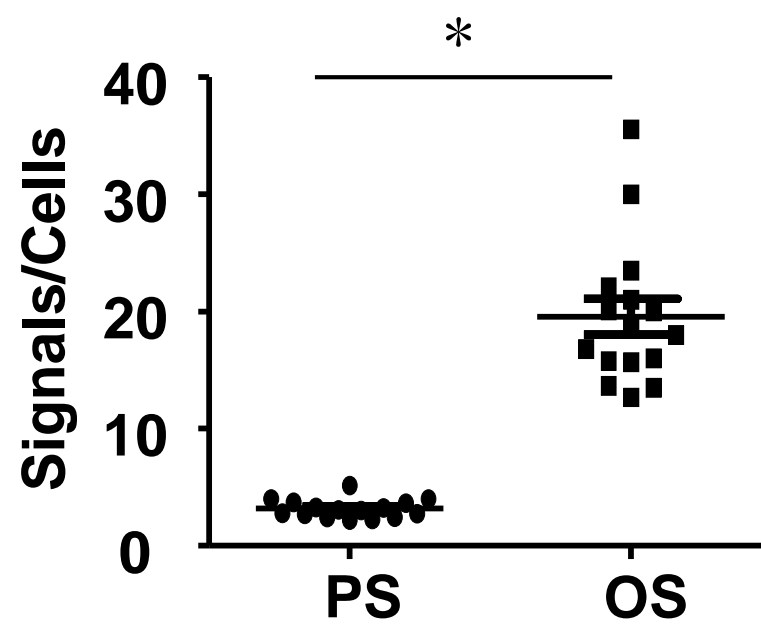


## Supplementary materials

**A**



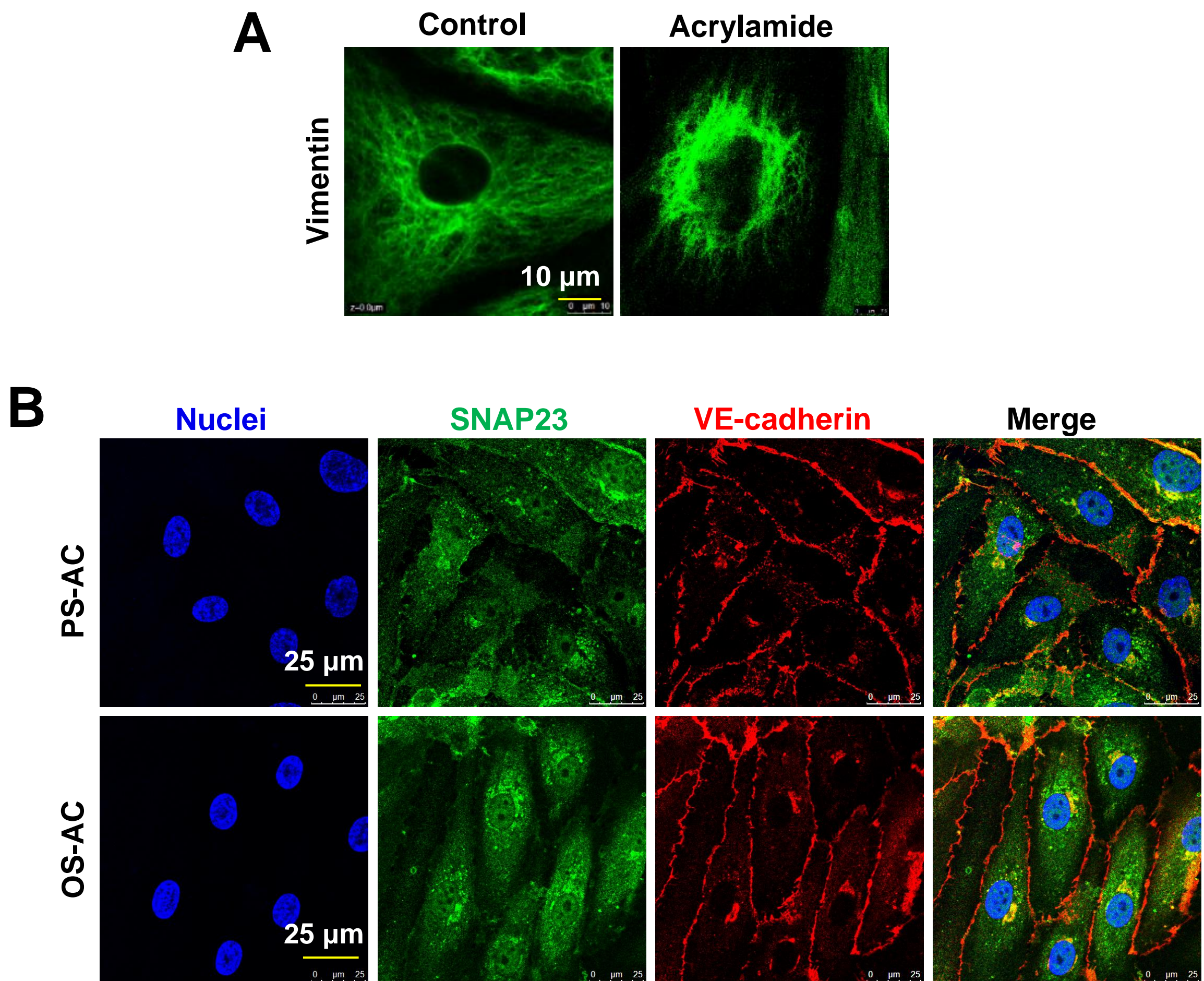
# B



**Figure S7. Oscillatory shear stress promotes the association of SNAP23 and vimentin in endothelial cells.**



## Supplementary materials



**Figure S8. Treatment with acrylamide disrupts the organization of vimentin intermediate filaments as well as the cell membrane localization of SNAP23 both in static and the sheared endothelial cells.**