

FIG. S2. Clone check of the overexpression mutants isolated after transformation. Clones for overexpressing AO090001000224 (S2C), AO090011000448 (S2D), AO090023000205&6 (S2G), AO090026000492 (S2E), AO090012000721 (S2F), AO090102000339 (S2H), AO090011000838 (S2L), AO090005000456 (S2I), and AO090023000893 (S2J) are shown. Lane M: 1 kb DNA ladder marker [1-10 kb], lane W: Wild-type strain as a negative control. Clones that were considered to be positive homokaryons are shown in red.

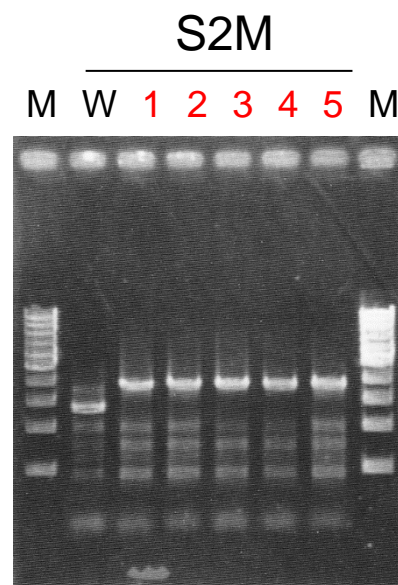
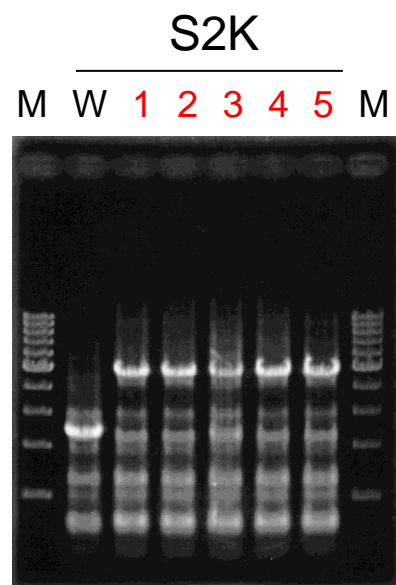
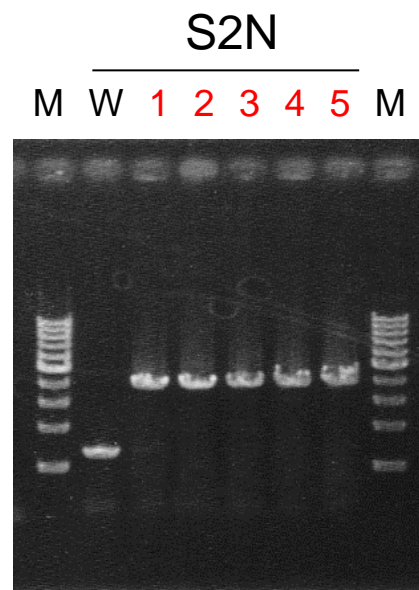
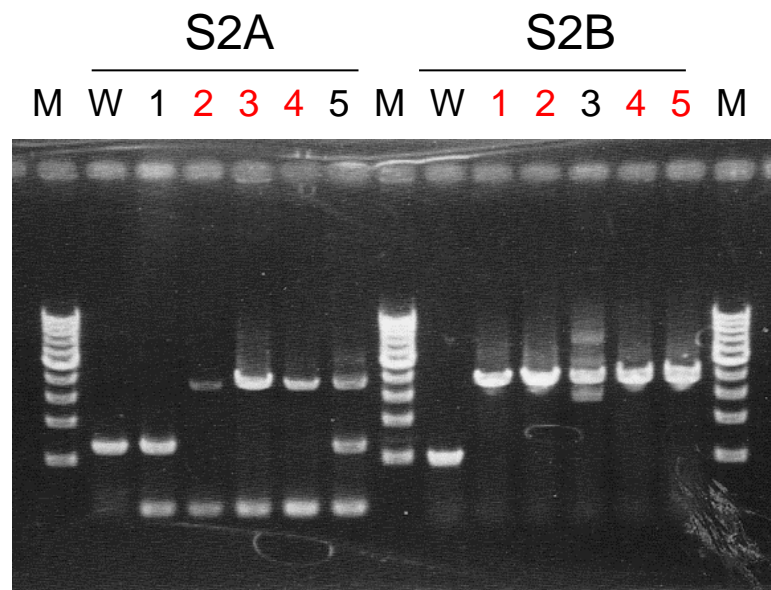


FIG. S2 (continued). Clone check of the overexpression mutants isolated after transformation. Clones for overexpressing AO090005001021 (S2A), AO090701000644 (S2B), AO090011000863 (S2N), AO090102000393 (S2K), and AO090124000083&4 (S2M) are shown. Lane M: 1 kb DNA ladder marker [1-10 kb], lane W: Wild-type strain as a negative control. Clones that were considered to be positive homokaryons are shown in red.