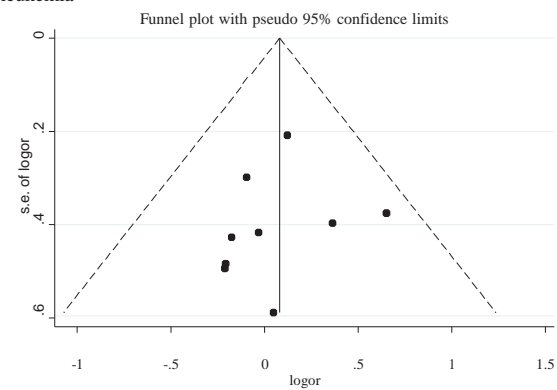
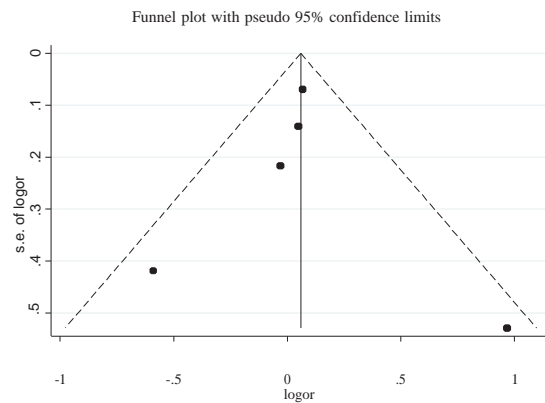


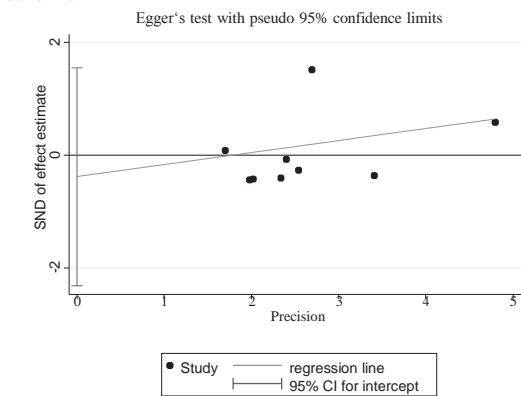
Supplementary Figure 3A. Publication bias: BCG vaccination and risk of leukemia



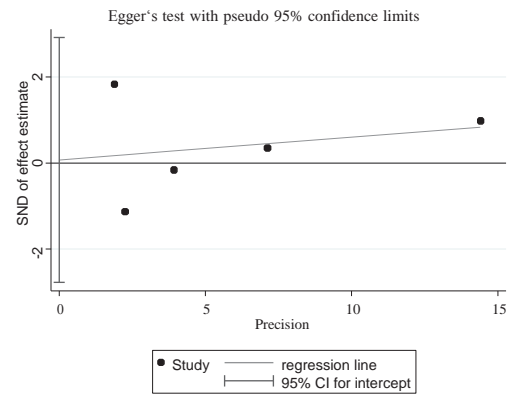
Supplementary Figure 4A. Publication bias: BCG vaccination and risk of cancer



Supplementary Figure 3B. Publication bias: BCG vaccination and risk of leukemia



Supplementary Figure 4B. Publication bias: BCG vaccination and risk of cancer



Supplementary Figure 3C. Publication bias: BCG vaccination and risk of leukemia

Egger's test with pseudo 95% confidence limits						
Number of studies = 9						
Root MSE = .7813						
Std Eff	Coef.	Std. Err.	t	P> t	[95% Conf. Interval]	
slope	.2138512	.2929403	0.73	0.489	-.4788424	.9065449
bias	-.3865152	.8180817	-0.47	0.651	-2.320971	1.547941
Test of H0: no small-study effects P = 0.651						

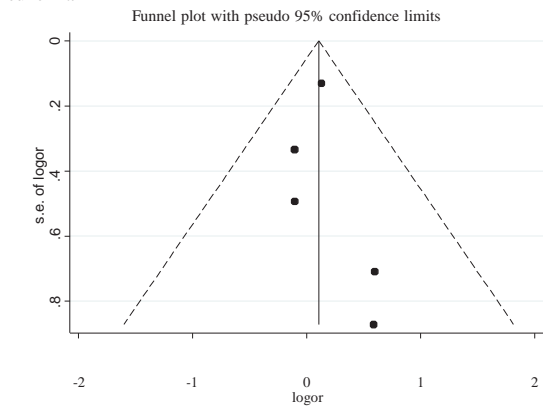
Supplementary Figure 4C. Publication bias: BCG vaccination and risk of cancer

Egger's test with pseudo 95% confidence limits						
Number of studies = 5						
Root MSE = 1.235						
Std Eff	Coef.	Std. Err.	t	P> t	[95% Conf. Interval]	
slope	.0530243	.1190101	0.45	0.686	-.3257189	.4317675
bias	.0684937	.8942422	0.08	0.944	-2.777384	2.914371
Test of H0: no small-study effects P = 0.944						

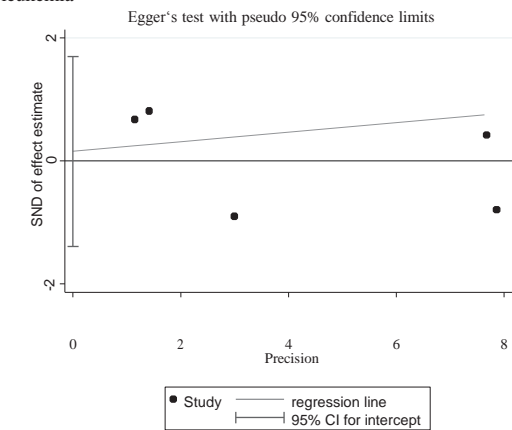
Supplementary Figure 3A-C. Publication bias: BCG vaccination and risk of leukemia.
Abbreviations: BCG, Bacillus Calmette–Guérin (vole bacillus; tuberculosis); CI, confidence interval; Coef, coefficient; Conf, confidence; Eff, effect; Err, error; logor, log odds ratio; MSE, mean square error; P, P-value; se, standard error; SND, standard normal deviate; Std, standard.

Supplementary Figure 4A-C. Publication bias: BCG vaccination and risk of cancer.
Abbreviations: BCG, Bacillus Calmette–Guérin (vole bacillus; tuberculosis); CI, confidence interval; Coef, coefficient; Conf, confidence; Eff, effect; Err, error; logor, log odds ratio; MSE, mean square error; P, P-value; se, standard error; SND, standard normal deviate; Std, standard.

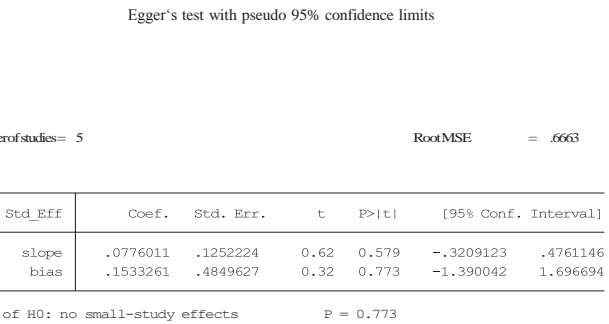
Supplementary Figure 5A. Publication bias: Polio vaccination and risk of leukemia



Supplementary Figure 5B. Publication bias: Polio vaccination and risk of leukemia

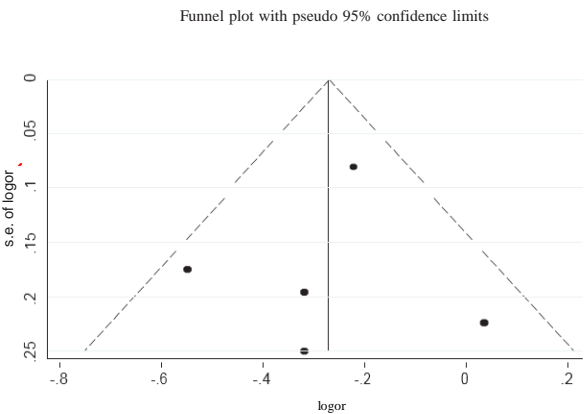


Supplementary Figure 5C. Publication bias: Polio vaccination and risk of leukemia

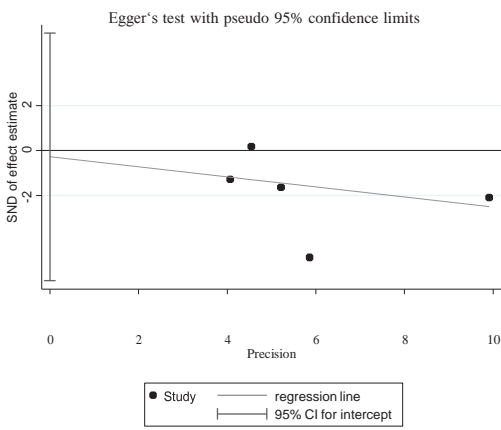


Supplementary Figure 5A-C. Publication bias: Polio vaccination and risk of leukemia.
Abbreviations: CI, confidence interval; Coef, coefficient; Conf, confidence; Eff, effect; Err, error; logor, log odds ratio; MSE, mean square error; P, P-value; Polio, poliomyelitis; se, standard error; SND, standard normal deviate; Std, standard.

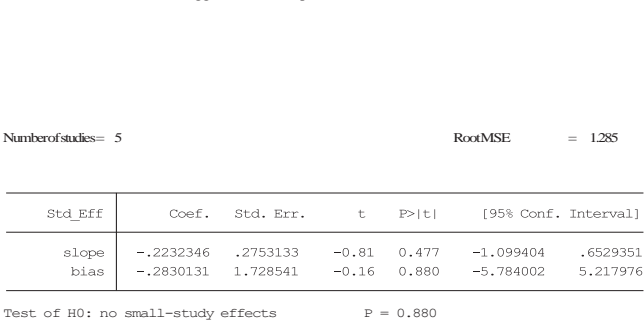
Supplementary Figure 6A. Publication bias: Hib vaccination and risk of ALL



Supplementary Figure 6B. Publication bias: Hib vaccination and risk of ALL

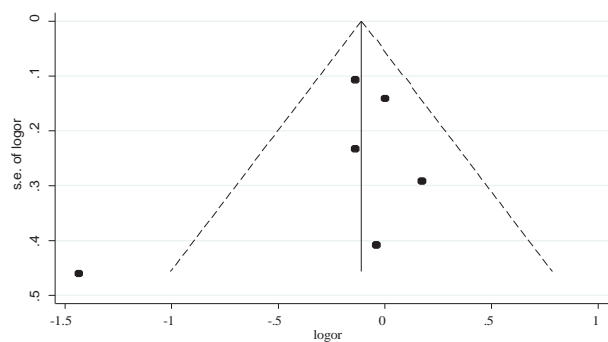


Supplementary Figure 6C. Publication bias: Hib vaccination and risk of ALL

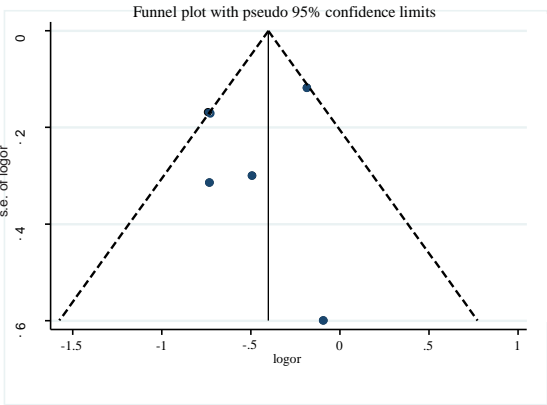


Supplementary Figure 6A-C. Publication bias: Hib vaccination and risk of ALL.
Abbreviations: ALL, Acute lymphoblastic leukemia; CI, confidence interval; Coef, coefficient; Conf, confidence; Eff, effect; Err, error; Hib, Haemophilus influenzae type b; logor, log odds ratio; MSE, mean square error; P, P-value; se, standard error; SND, standard normal deviate; Std, standard.

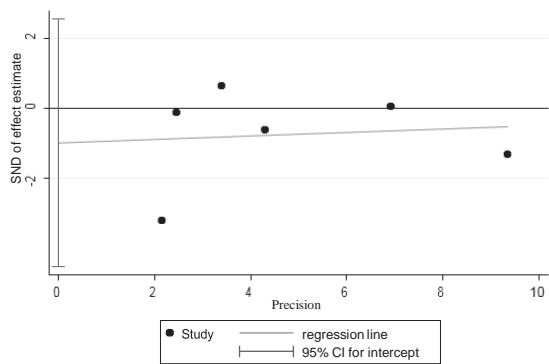
Supplementary Figure 7A. Publication bias: MMR vaccination and risk of ALL
Funnel plot with pseudo 95% confidence limits



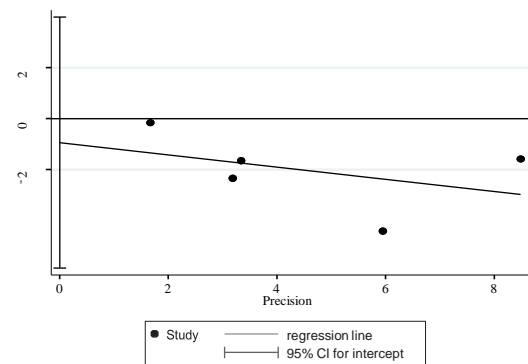
Supplementary Figure 8A. Publication bias: Number of vaccinations and risk of ALL



Supplementary Figure 7B. Publication bias: MMR vaccination and risk of ALL
Egger's test with pseudo 95% confidence limits



Supplementary Figure 8B. Publication bias: Number of vaccinations and risk of ALL
Egger's test with pseudo 95% confidence limits



Supplementary Figure 7C. Publication bias: MMR vaccination and risk of ALL
Egger's test with pseudo 95% confidence limits

Numberofstudies= 6				RootMSE = 1.48		
Std Eff	Coef.	Std. Err.	t	P> t	[95% Conf. Interval]	
slope	.0498346	.2352268	0.21	0.843	-.6032597	.7029289
bias	-.9804296	1.274464	-0.77	0.485	-4.518909	2.55805

Test of H0: no small-study effects P = 0.485

Supplementary Figure 8C. Publication bias: Number of vaccinations and risk of ALL
Egger's test with pseudo 95% confidence limits

Numberofstudies= 5			RootMSE		= 1.627	
Std Eff	Coef.	Std. Err.	t	P> t	[95% Conf. Interval]	
slope	-.2406651	.3017854	-0.80	0.483	-1.201081	.7197509
bias	-.9387165	1.547196	-0.61	0.587	-5.862586	3.985153

Test of H0: no small-study effects P = 0.587

Supplementary Figure 7A-C. Publication bias: MMR vaccination and risk of ALL.

Abbreviations: ALL, Acute lymphoblastic leukemia; CI, confidence interval; Coef, coefficient; Conf, confidence; Eff, effect; Err, error; logor, log odds ratio; MMR, Mumps-Measles-Rubella; MSE, mean square error; P, P-value; se, standard error; SND, standard normal deviate; Std, standard.

Supplementary Figure 8A-C. Publication bias: Number of vaccinations and risk of ALL.

Abbreviations: ALL, Acute lymphoblastic leukemia; CI, confidence interval; Coef, coefficient; Conf, confidence; Eff, effect; Err, error; logor, log odds ratio; MSE, mean square error; P, P-value; se, standard error; SND, standard normal deviate; Std, standard.