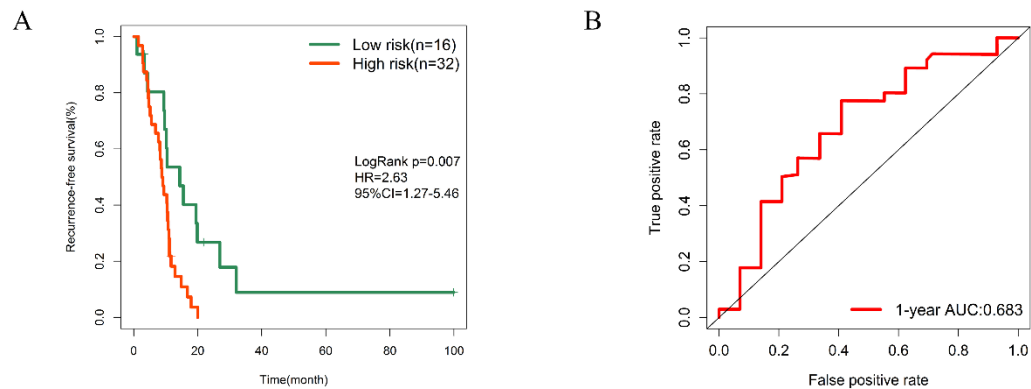
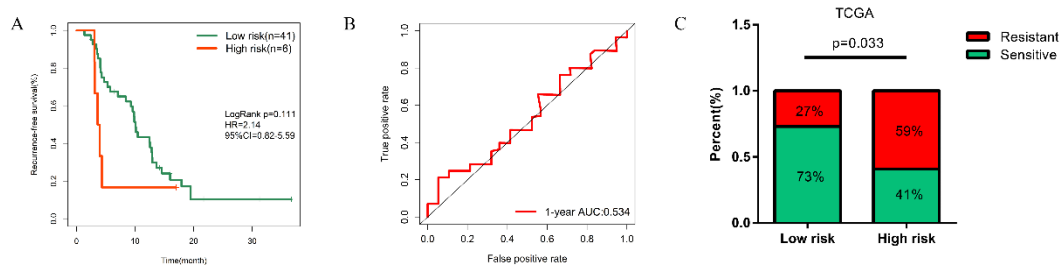


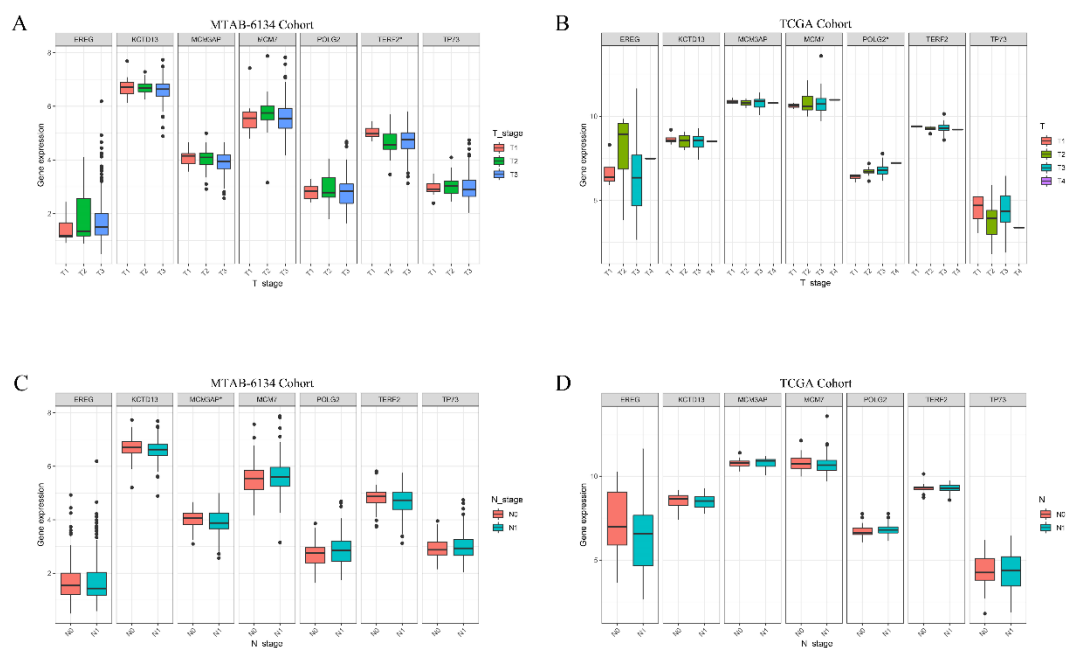
**Supplementary Figure 1.** Expression of seven genes in TCGA dataset.



**Supplementary Figure 2.** Prognostic performance of the signature in R1 resected patients from MTAB-6134 dataset. (A) K-M survival curve. (B) ROC curve.



**Supplementary Figure 3.** Prognostic performance of the signature in R1 resected patients from TCGA dataset. (A) K-M survival curve. (B) ROC curve. (C) Correlation of risk score and the response to adjuvant chemotherapy in TCGA cohort.



**Supplementary Figure 4.** Relationship of gene expression and clinical features. (A, B) Expression of seven genes in patients classified by T stage in MTAB-6134 and TCGA datasets. (C, D) Expression of seven genes in patients classified by N stage in MTAB-6134 and TCGA datasets.