

**Figure S4**

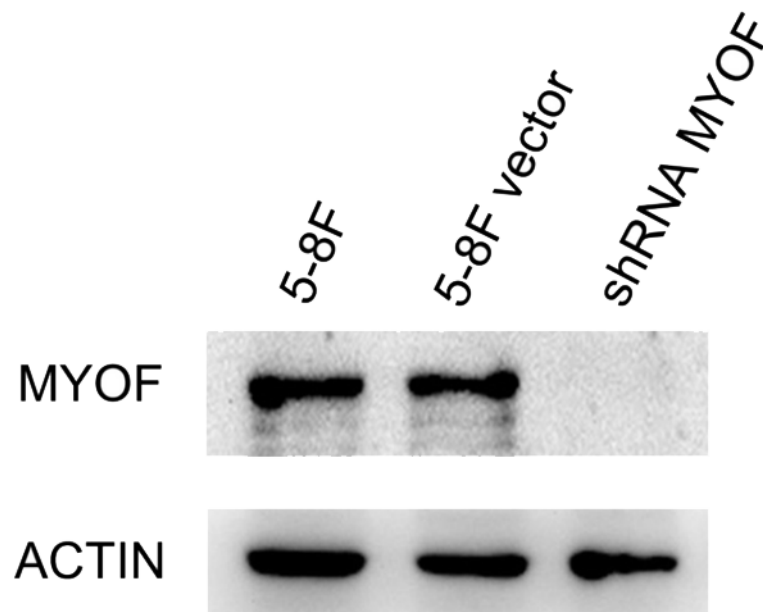


Figure S4. Western blot analysis was used to reveal the percentage of protein knockdown.  $\beta$ -actin was used as the internal loading control. MYOF protein expression in cells expressing a scrambled shRNA (vector) was used as the control. Quantification of the Western blot showed that the higher knockdown efficiency was observed in shRNA when compared to scramble control.