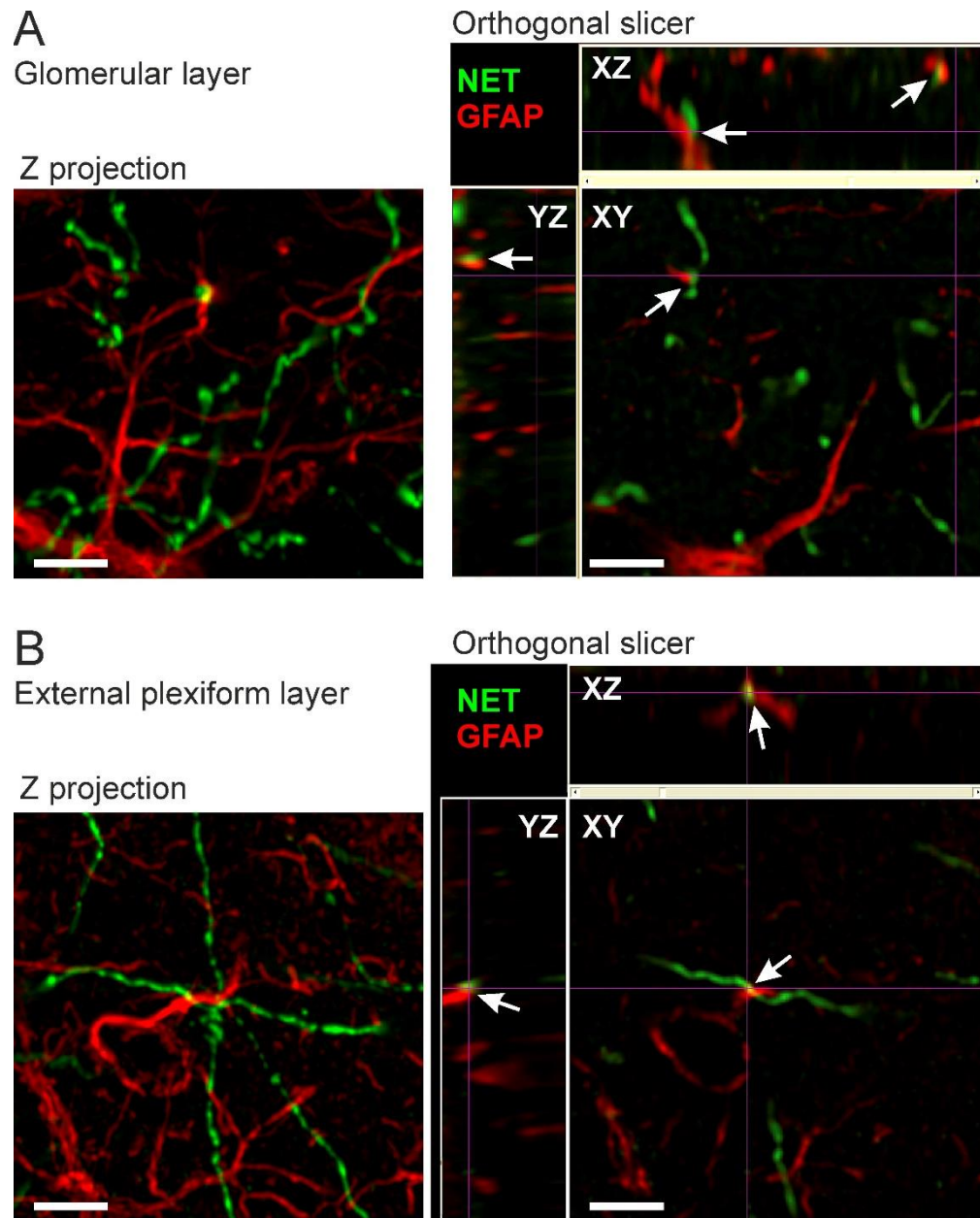


Supplementary Material



Supplementary Figure 1. Close proximity of noradrenergic fibers stained for norepinephrine transporter NET (green) and astrocyte processes stained for GFAP (red) in the glomerular layer (A) and external plexiform layer (B). Z projections give an overview of the entire structures, while the orthogonal slicer provides spatial information in single plains in XY, XZ and YZ orientation. Arrows indicate NET-positive fibers adjacent to astrocyte processes. Scale bars: 5 μ m.