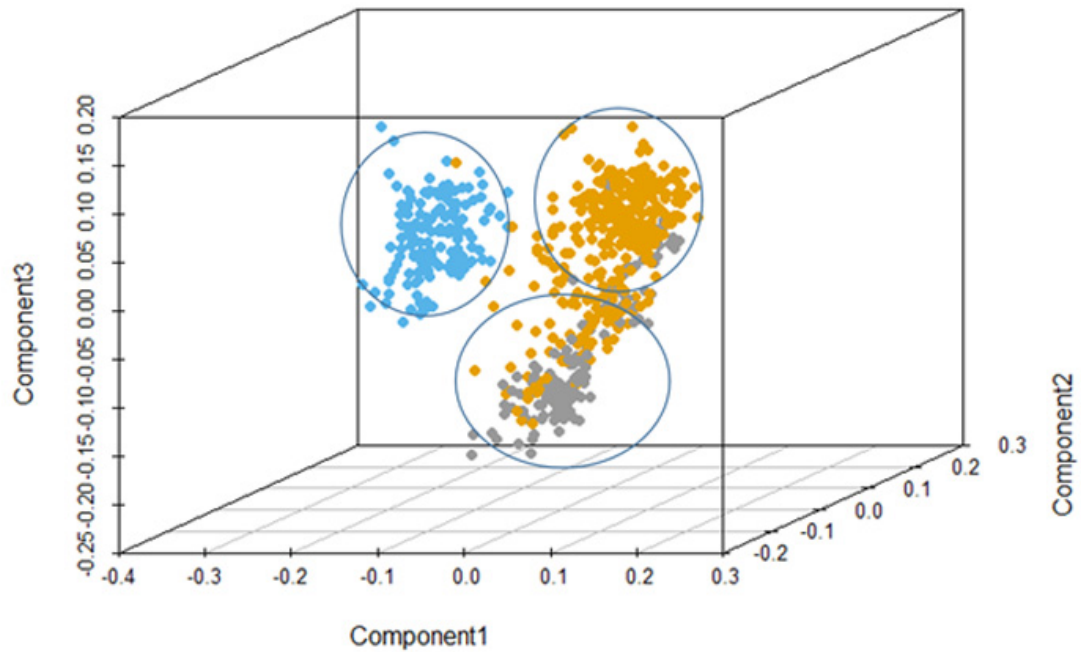
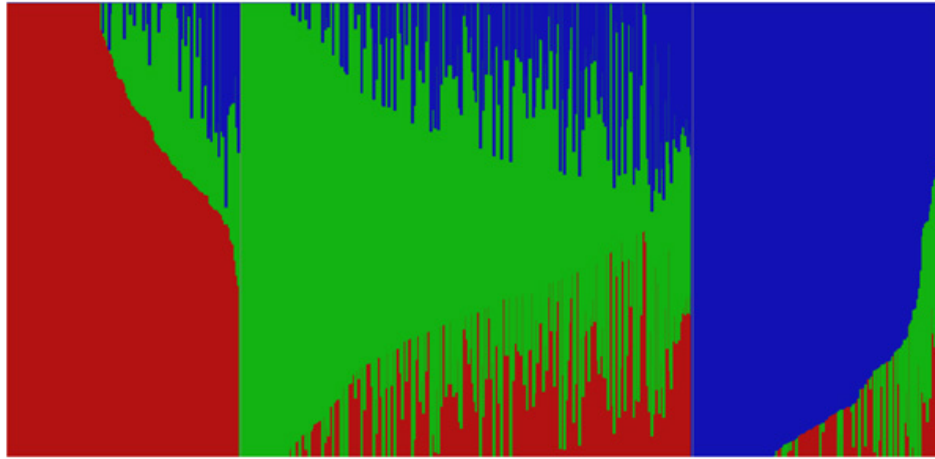


A**B**

Supplementary Figure 1. Population structure observed in 620 individuals from three U.S. public fresh market peach breeding programs (Univ. of Arkansas, Texas A&M and Clemson Univ.) (A) Scatter plot of a Multidimensional Scaling analysis (MDS). The individuals were clustered into three groups, blue Texas A&M, orange Clemson Univ. and grey Univ. of Arkansas. (B) Population structure estimates ($K = 3$), the areas of the three colors (red, green and blue) illustrate the proportion of each subgroup. Group one - Texas A&M; group two - Clemson Univ.; and group three Univ. of Arkansas peach breeding program.