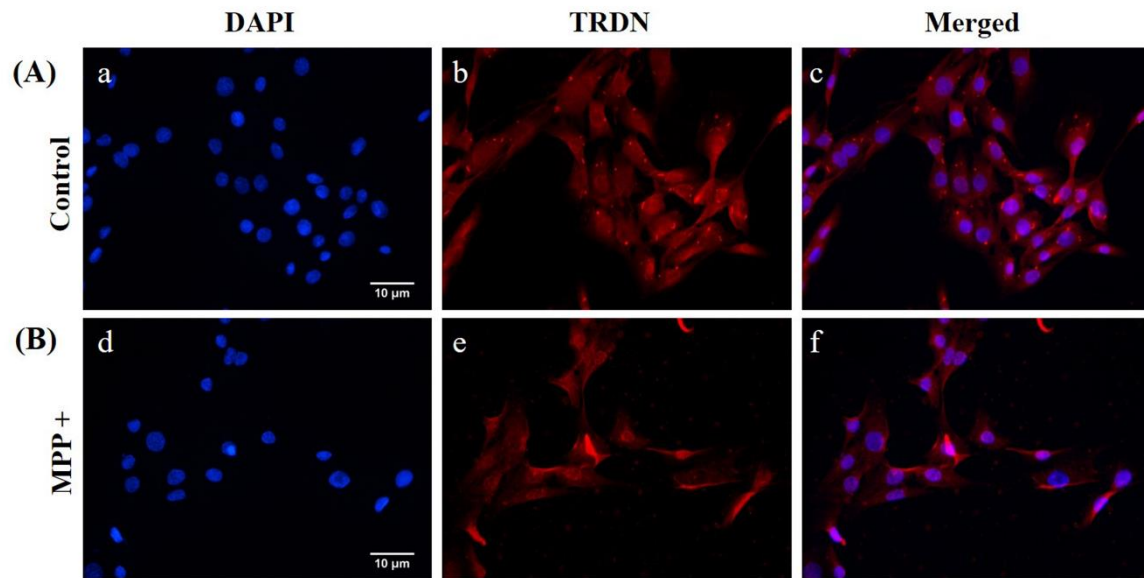


## C2C12 cells ( 400 x )



**Supplementary figure 1. Immunofluorescence staining of triadin (TRDN) in C2C12 cells. (A)** Control group. a, nuclei; b, TRDN; c, merge of a and b. **(B)** 1-methyl-4-phenylpyridinium (MPP+) group. d, nuclei; e, TRDN; f, merge of d and e. (scale bar, 10 μm)