

**Supplementary material for $\delta^{60}\text{Ni}$ and $\delta^{13}\text{C}$ composition of serpentinites and carbonates
of the Tekirova ophiolite, Turkey, and Meatiq ophiolite, Egypt**

Anna Neubeck^{1*}, Arjen Boosman², Hakan Hosgörmez³, Dogacan Özcan³, Arman Boskabadi⁴, Magnus Ivarsson⁵, Olivier Rouxel⁶

^{1.} Department of Earth Sciences, Uppsala University, Sweden

^{2.} Department of Earth Sciences, Utrecht University, The Netherlands

^{3.} Department of Geological Engineering, Istanbul University - Cerrahpasa, Turkey

^{4.} Department of Geological Sciences, Stockholm University, Sweden

^{5.} Swedish Museum of Natural History, Sweden

^{6.} Ifremer, France

Electron Image 26

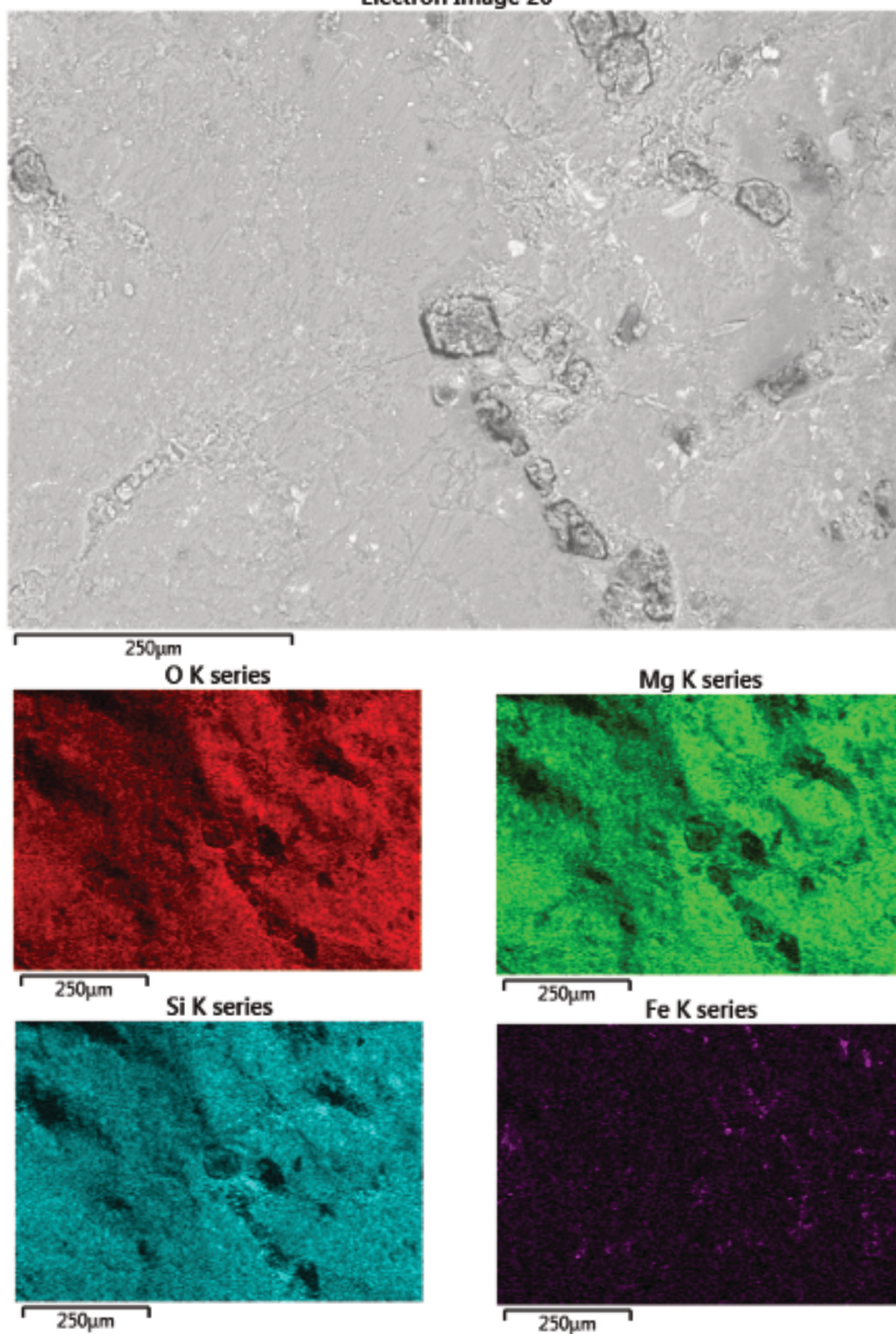


Figure S1. ESEM EDS mapping images, showing the elemental distribution of samples LB1 and LB2.

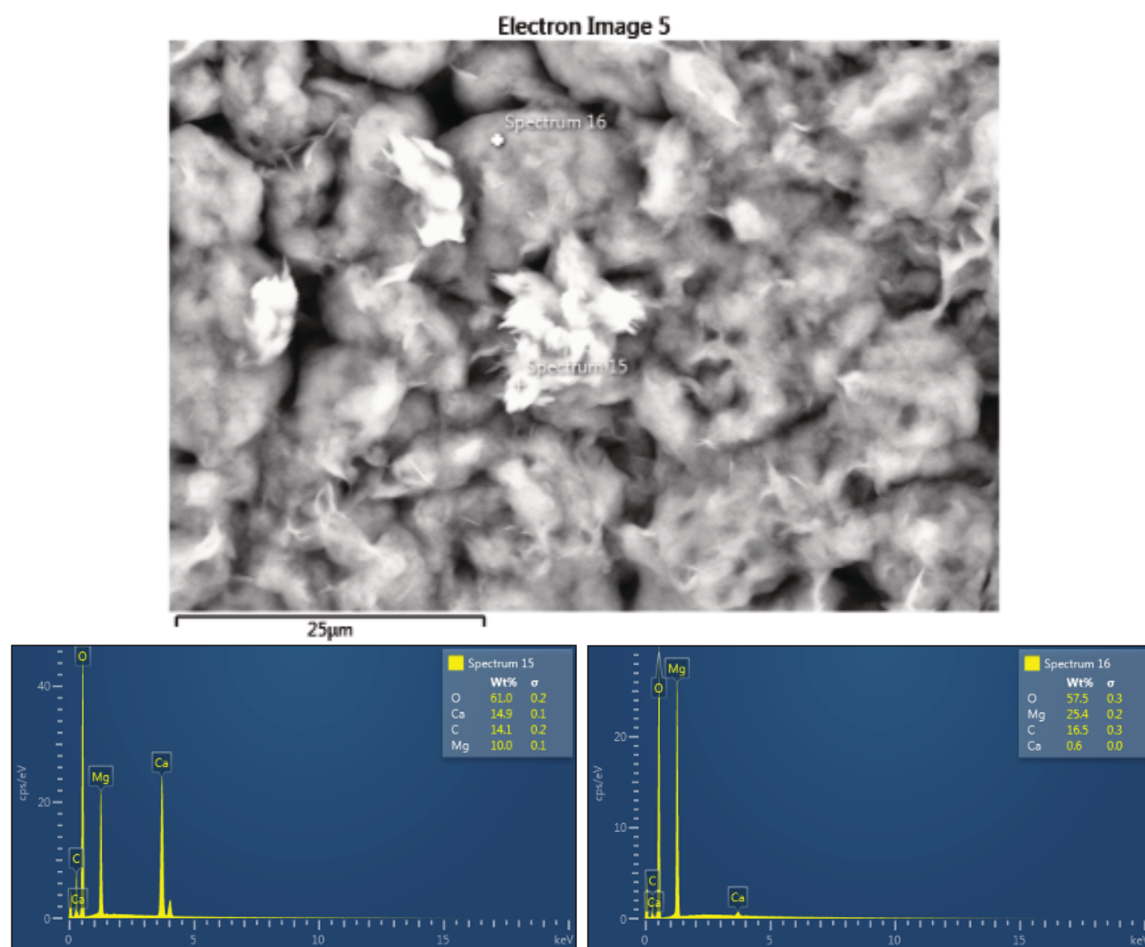


Figure S2. ESEM EDS spot analyses, showing the elemental composition of the BFE sample.

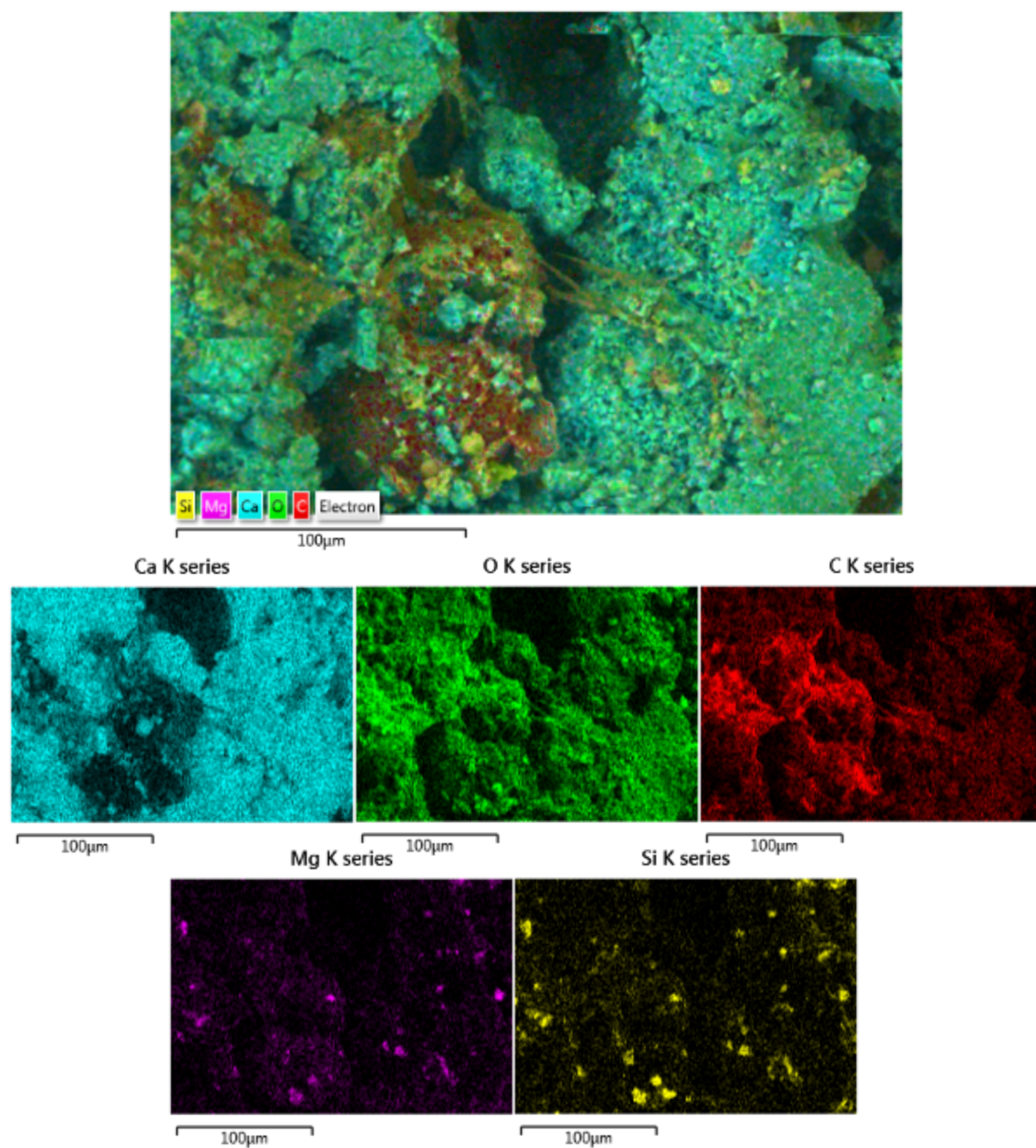


Figure S3. ESEM EDS mapping images, showing the elemental distribution of samples BF1 and BF2.

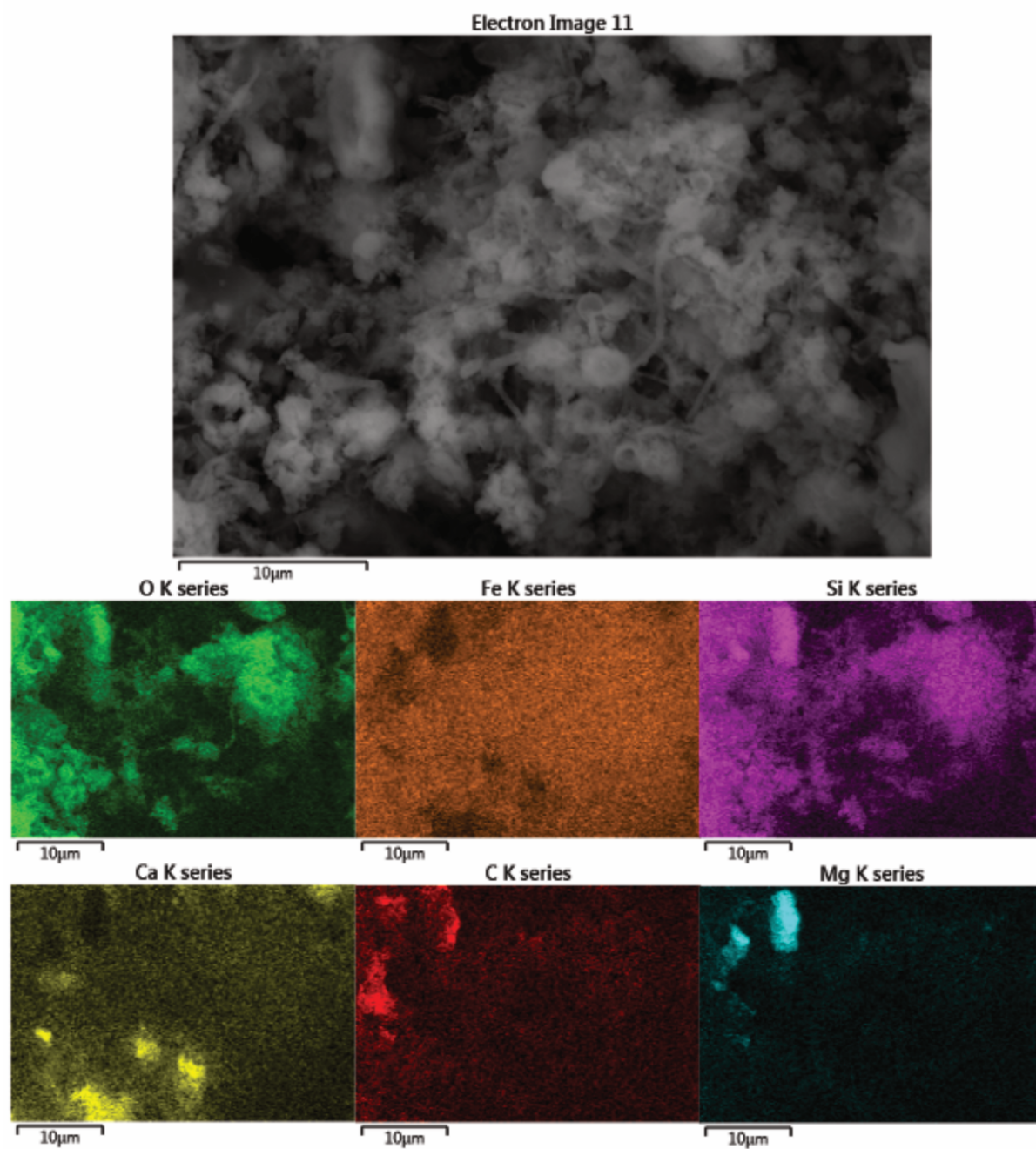


Figure S4. ESEM EDS mapping images, showing the elemental distribution of the IR sample.

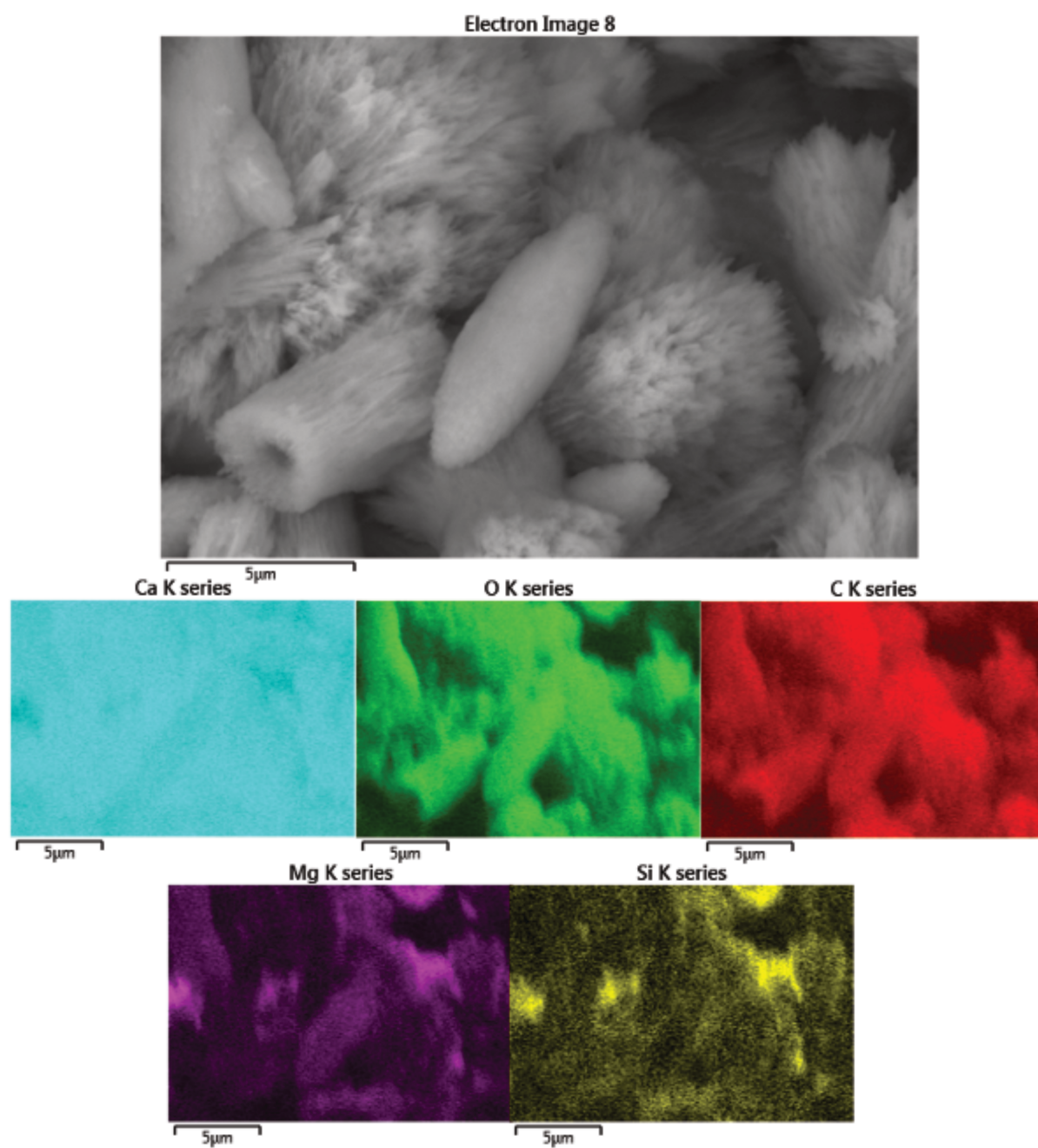


Figure S5. ESEM EDS mapping images, showing the elemental distribution of the FG1 sample.

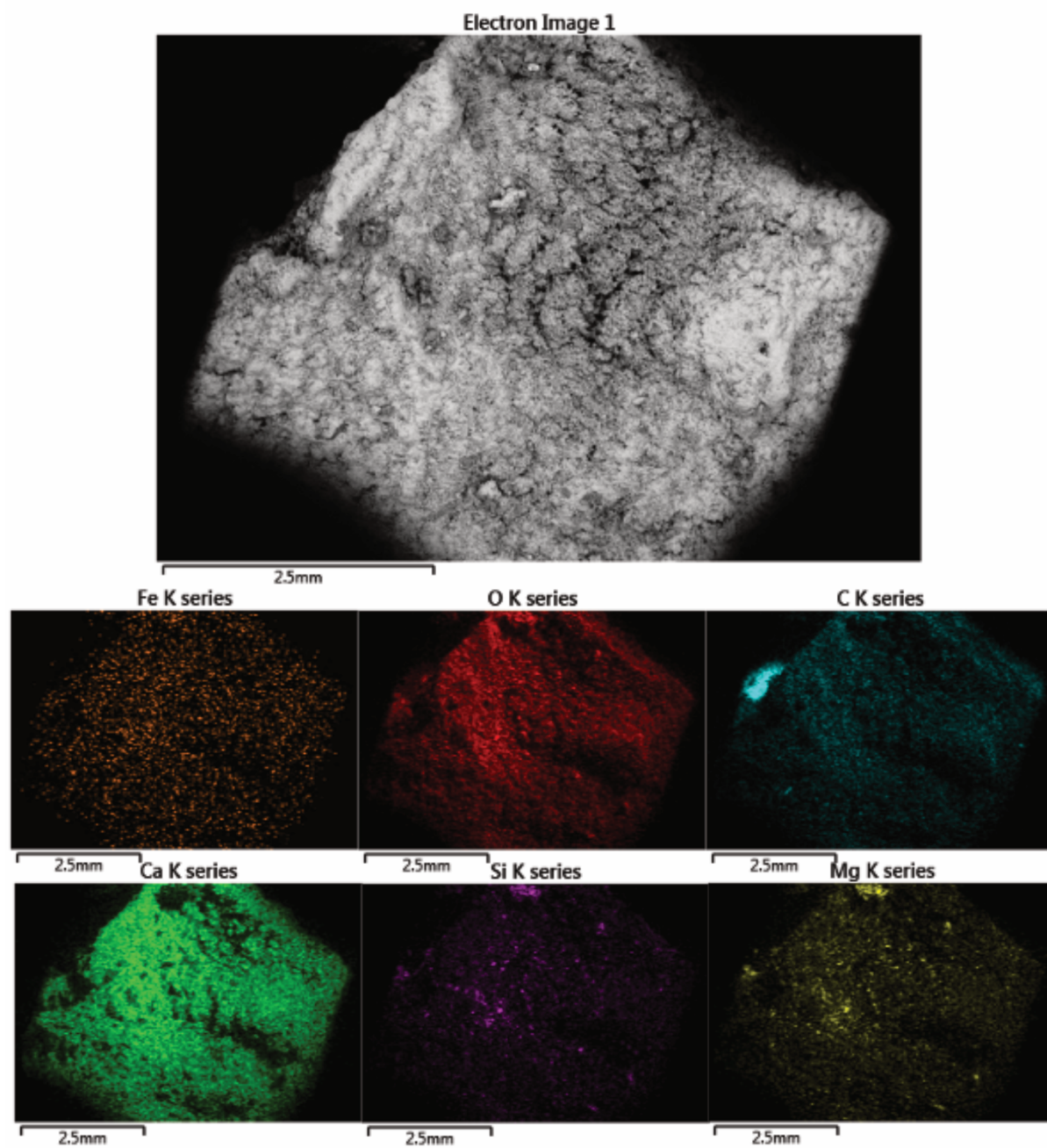


Figure S6. ESEM EDS mapping images, showing the elemental distribution of the FG2 sample.